

**TRACTOR & OUTDOOR EQUIPMENT
SERVICE MANUAL**

SERVICE MANUAL

TRACTOR & OUTDOOR EQUIPMENT

● **SERVICE MANUAL**

- 1. TRACTOR SERVICE MANUAL**
- 2. ENGINE SERVICE**
- 3. FUNDAMENTALS SECTIONS**
- 4. TRANSAXLE SERVICE (OPTIONAL)**
- 5. GEAR TRANSMISSION SERVICE (OPTIONAL)**
- 6. REDUCTION GEAR & DIFFERENTIAL SERVICE (OPTIONAL)**
- 7. HYDROSTATIC TRANSMISSION SERVICE (OPTIONAL)**

KUBOTA

CONDENSED SPECIFICATIONS

	MODELS	
	T1400 Kubota	T1400H Kubota
Engine Make		
Model	_____	GH400V-L _____
Bore	_____	84.2 mm (3.31 in.) _____
Stroke	_____	70 mm (2.76 in.) _____
Piston Displacement	_____	389 cc (23.7 cu. in.) _____
Rated Power	_____	10.1 kW (13.5 hp) _____
Slow Idle Speed—Rpm	_____	1300 _____
High Idle Speed (No-Load)—Rpm	_____	3350 _____
Crankcase Oil Capacity	_____	1.4 L (1.5 qts.) _____
Transmission Oil Capacity	2.6 L (2.7 qts.)	0.57 L (0.6 qts.)
Weight	SAE 90 EP Gear Lube	SAE 10W-30 Engine Oil
Differential Oil Capacity	_____	1.8 L (1.9 qts.)
Weight	_____	SAE 90 EP Gear Lube

FRONT AXLE AND STEERING SYSTEM

AXLE MAIN MEMBER

All Models

REMOVE AND REINSTALL. To remove front axle assembly, first remove mower deck from tractor. Raise and sup-

port front of tractor. Remove drive belts from engine pulley, then unbolt and remove engine pulley. Disconnect drag link from spindle steering arm. Remove nut (5—Fig. K1), withdraw pivot bolt (9) and remove axle assembly from tractor.

Inspect axle (8), pivot tube (7) and pivot bolt for wear or damage and renew as necessary. Lubricate pivot tube with molybdenum disulfide grease. Reinstall axle by reversing removal procedure. Tighten axle retaining nut to 78-90 N·m (57-65 ft.-lbs.). Tighten drag link nut to 39-45 N·m (30-33 ft.-lbs.).

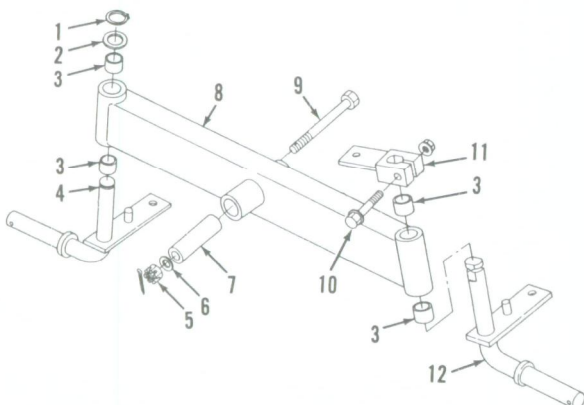


Fig. K1—Exploded view of front axle assembly.

1. Snap ring
2. Washer
3. Bushings
4. Spindle R.H.
5. Nut
6. Washer
7. Pivot tube
8. Axle main member
9. Pivot bolt
10. Clamp bolt
11. Steering arm
12. Spindle L.H.

TIE ROD AND TOE-IN

All Models

All models are equipped with an adjustable tie rod. Inspect tie rod ball joints for excessive wear and looseness and renew as needed.

To check front wheel toe-in, turn front wheels straight ahead and measure distance (A—Fig. K2) between front of tires and distance (B) between rear of tires. Distance (A) should be 0-5 mm (0-3/16 in.) less than distance (B). To ad-

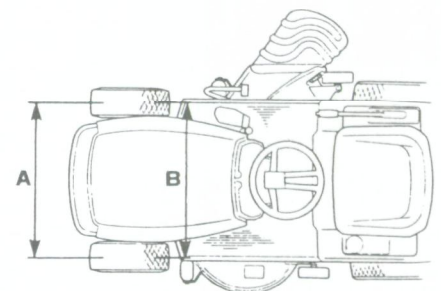


Fig. K2—Front wheel toe-in should be 0-5 mm (0-3/16 in.). Refer to text for adjustment procedure.

Kubota

just, disconnect tie rod and change tie rod length as necessary. Tighten tie rod mounting nut to 24-27 N·m (18-20 ft.-lbs.).

STEERING SPINDLES

All Models

REMOVE AND REINSTALL. To remove steering spindles (4 and 12—Fig. K1), raise and support front of tractor. Remove front wheels. Disconnect tie rod from spindles. Remove clamp bolt (10) from steering arm (11) on left spindle (12), then tap spindle out of steering arm and remove spindle from axle. Remove snap ring (1) from right spindle (4) and lower spindle from axle.

Inspect spindles and bushings for wear and renew as needed. Reinstall by reversing removal procedure. Tighten tie rod mounting nuts to 24-27 N·m (18-20 ft.-lbs.). Lubricate spindles with multipurpose grease.

STEERING GEAR

All Models

REMOVE AND REINSTALL. To remove steering gears, first raise seat and disconnect battery cables. Disconnect fuel hose from fuel filter, remove fuel tank mounting screws and remove fuel tank. Disconnect air inlet pipe from air cleaner, remove air cleaner mounting screws and remove air cleaner. Remove steering wheel pad (1—Fig. K3) and unscrew steering wheel mounting nut (2). Pull steering wheel off steering shaft (5). Disconnect drag link from pitman arm. Unbolt and remove pitman arm (14) from sector gear shaft (9). Withdraw sector gear (9) from support (11). Re-

move cotter pin (8) from lower end of steering shaft (5). Remove instrument panel mounting screws, lift instrument panel up and remove steering shaft.

Inspect bushings and shafts for wear and renew as necessary. Check steering gear teeth for excessive wear or damage.

To reassemble, reverse removal procedure. Apply multipurpose grease to sector shaft bushings (10 and 12), steering shaft bushing (4) and steering gear teeth. Be sure to align match marks (M—Fig. K4) on pitman arm and sector gear shaft. Tighten pitman arm nut to 78-90 N·m (57-66 ft.-lbs.). Tighten drag link nut to 39-45 N·m (30-33 ft.-lbs.).

ENGINE

All Models

REMOVE AND REINSTALL. To remove engine, raise seat and disconnect battery cables. Raise the hood and disconnect wiring connectors from head lights, ignition unit, charging coil and starter on right side of engine. On left

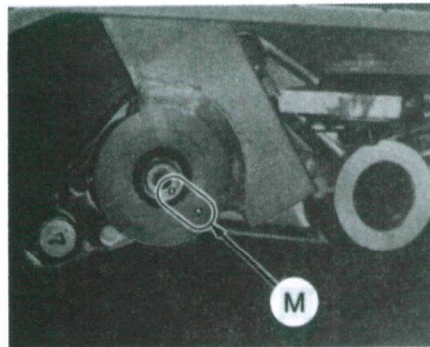


Fig. K4—Match marks (M) on pitman arm and sector gear shaft must be aligned.

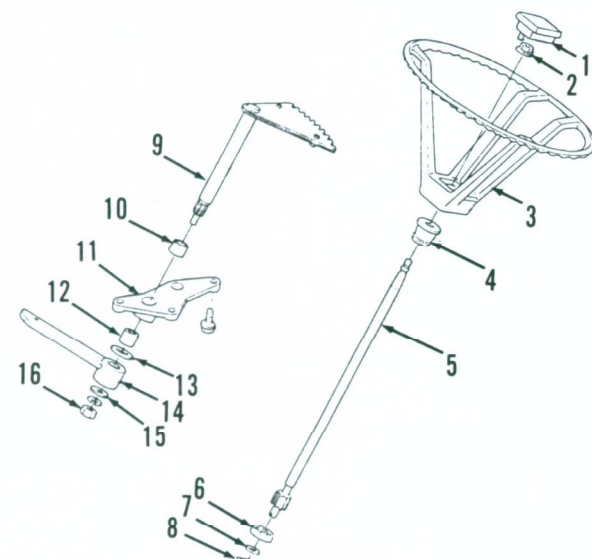


Fig. K3—Exploded view of steering gear assembly used on all tractors.

1. Pad
2. Nut
3. Steering wheel
4. Bushing
5. Steering shaft
6. Ball bearing
7. Washer
8. Cotter pin
9. Sector gear
10. Bearing
11. Steering gear support
12. Bearing
13. Shim
14. Pitman arm
15. Washer
16. Nut

YARD & GARDEN TRACTOR

side of engine, disconnect wiring connectors from fuel cut-off solenoid. Disconnect throttle control cable. Shut off fuel and disconnect fuel line from carburetor. Unbolt and remove fuel tank and air cleaner. On Model T1400, remove engine pulley belt guard. On all models, remove drive belts from engine pulley. Unscrew four engine mounting bolts and lift engine from tractor.

To reinstall engine, reverse removal procedure.

OVERHAUL. To overhaul engine components and accessories, refer to Kubota engine section of this manual.

CLUTCH AND BRAKE

All Models

ADJUSTMENT. Clutch/brake pedal travel from released (up) position to fully depressed position should be 125-130 mm (4.92-5.12 in.) on Model T1400 and 70-80 mm (2.76-3.15 in.) on Model T1400H. To adjust pedal travel, loosen locknuts (2—Fig. K5) and turn adjusting screw (1) as necessary.

To adjust parking brake, depress brake pedal and lock it in place with a piece of wood. Loosen brake lock retainer mounting screws (3—Fig. K6), then pull park brake knob (1) to hook brake lock retainer (8) on stop (7) of brake pedal shaft. On Model T1400H, hook lock plate (5) on brake lock retainer (4). On all models, distance (L2—Fig. K7) between brake rod yoke (4) and end of brake rod (7) should be 25 mm (1 in.);

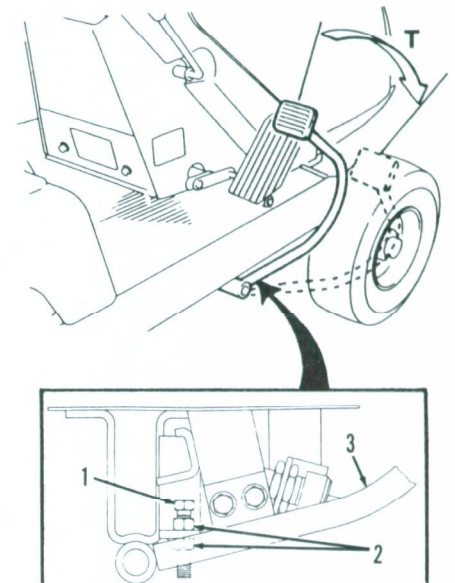


Fig. K5—Brake pedal travel (T) is set by turning adjusting screw (1). Refer to text.



Download the full PDF manual instantly.

Our customer service e-mail:

aservicemanualpdf@yahoo.com