

Product: SKID STEER LOADER

Model: 236B SKID STEER LOADER HEN

Configuration: 236B 246B 252B 262B SKID STEER LOADER HEN00001-06749 (MACHINE) POWERED BY 3044C Engine

## Disassembly and Assembly C3.4 Engines for Caterpillar Built Machines

Media Number -KENR6941-04

Publication Date -01/03/2012

Date Updated -01/03/2012

i02639276

# Flywheel Housing - Remove and Install

SMCS - 1157-010

## Removal Procedure

Table 1

Required Tools			
Tool	Part Number	Part Description	Qty
A	-	Guide Stud (M10 x 1.25 by 100 mm)	2

### Start By:

- A. Remove the flywheel. Refer to Disassembly and Assembly, "Flywheel - Remove".

---

### NOTICE

**Keep all parts clean from contaminants.**

**Contaminants may cause rapid wear and shortened component life.**

---

### NOTICE

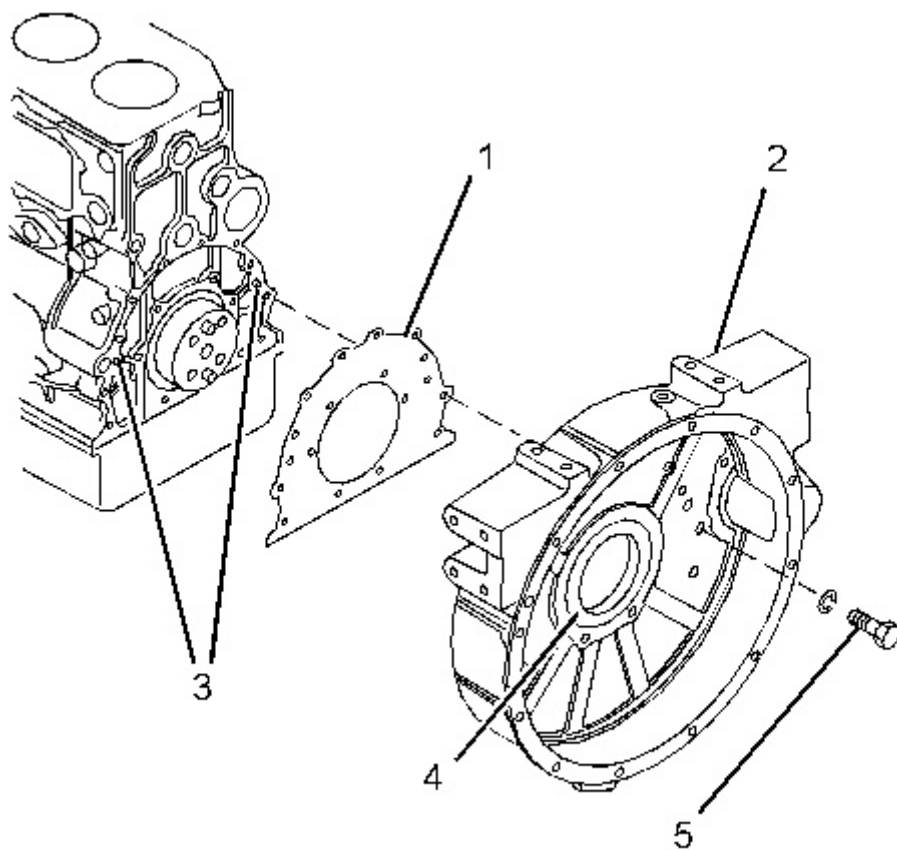
**Care must be taken to ensure that fluids are contained during performance of inspection, maintenance, testing, adjusting and repair of the product. Be prepared to collect the fluid with suitable containers before opening any compartment or disassembling any component containing fluids.**

**Dispose of all fluids according to local regulations and mandates.**

---

1. Support the engine.

---



---

Illustration 1

g01335374

Typical example

---

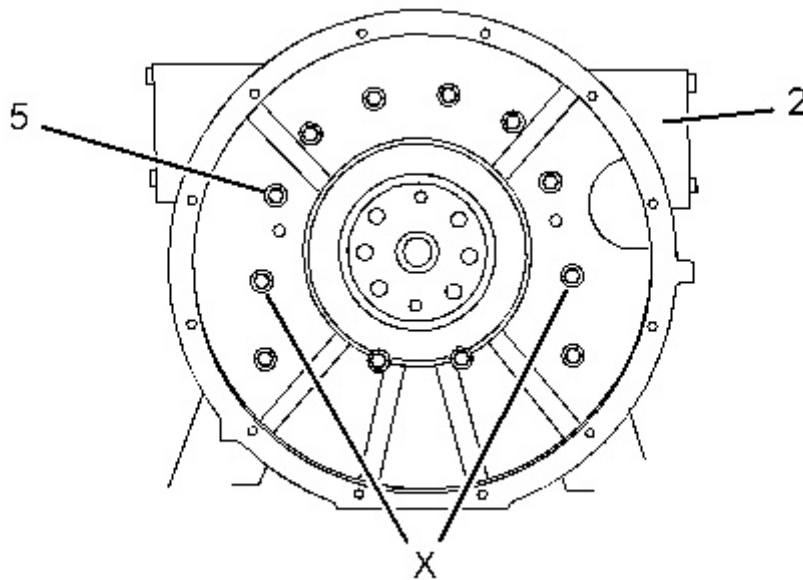


Illustration 2

g01366220

Typical example

2. Remove two bolts (5) from positions (X) on flywheel housing (2) .
3. Install Tooling (A) to positions (X) on flywheel housing (2) .
4. Attach a suitable lifting device to flywheel housing (2). The weight of the flywheel housing is approximately 32 kg (71 lb).
5. Remove the remaining bolts (5) .
6. Carefully remove flywheel housing (2) from dowels (3) and from the cylinder block.
 

**Note:** If necessary, tap the flywheel housing with a soft faced hammer in order to separate the flywheel housing from the cylinder block.
7. Remove joint (1) .
8. Remove crankshaft rear seal (4) from flywheel housing (2) .

## Installation Procedure

Table 2

Required Tools			
Tool	Part Number	Part Description	Qty
A	-	Guide Stud (M10 x 1.25 by100 mm)	2
B	8T-5096	Dial Indicator Group	1

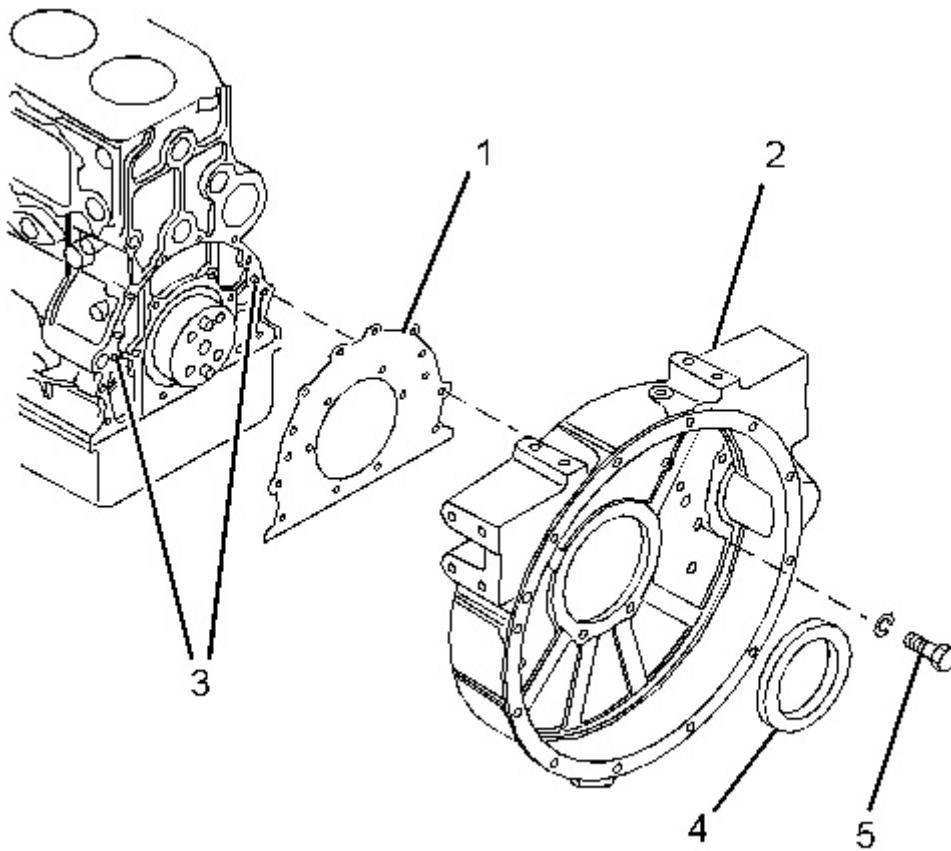
## NOTICE

**Keep all parts clean from contaminants.**

**Contaminants may cause rapid wear and shortened component life.**

---

1. Ensure that the mating surfaces of the cylinder block and the flywheel housing are clean and free from damage.
- 



---

Illustration 3

g01335383

Typical example

2. Inspect dowels (3) in the cylinder block. If necessary, replace the dowels.
-

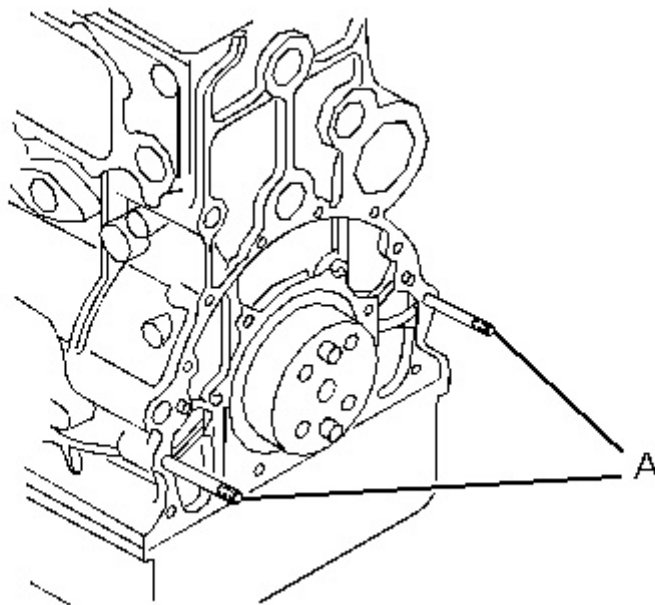


Illustration 4

g01335381

3. Install Tooling (A) to the cylinder block.
4. Install a new joint (1) to the cylinder block.
5. Install a suitable lifting device to flywheel housing (2). The weight of the flywheel housing is approximately 32 kg (71 lb).
6. Use the lifting device to align flywheel housing (2) with Tooling (A). Install the flywheel housing to the cylinder block.
7. Install bolts (5) finger tight.
8. Remove Tooling (A). Install the remaining bolts (5) .
9. Tighten bolts (5) to a torque of 35 N·m (26 lb ft).
10. Remove the lifting device.
11. Use Tooling (B) to check the alignment of the flywheel housing with the crankshaft. Refer to Systems Operation, Testing and Adjusting, "Flywheel Housing - Inspect".
12. Install a new crankshaft rear seal (4). Refer to Disassembly and Assembly, "Crankshaft Rear Seal - Install".

**End By:** Install the flywheel. Refer to Disassembly and Assembly, "Flywheel - Install".

---

Product: SKID STEER LOADER

Model: 236B SKID STEER LOADER HEN

Configuration: 236B 246B 252B 262B SKID STEER LOADER HEN00001-06749 (MACHINE) POWERED BY 3044C Engine

## Disassembly and Assembly

### C3.4 Engines for Caterpillar Built Machines

Media Number -KENR6941-04

Publication Date -01/03/2012

Date Updated -01/03/2012

i05016832

## Crankshaft Pulley - Remove and Install

SMCS - 1205-010

### Removal Procedure

Table 1

Required Tools			
Tool	Part Number	Part Description	Qty
A	6V-9120	Socket	1
B	5F-7465	Puller Gp	1
	8T-4121	Hard Washer	2
	8T-4225	Washer	2
	8T-6912	Bolt	2

#### Start By:

- A. Remove the V-belt. Refer to Disassembly and Assembly, "V-belts - Remove and Install".

---

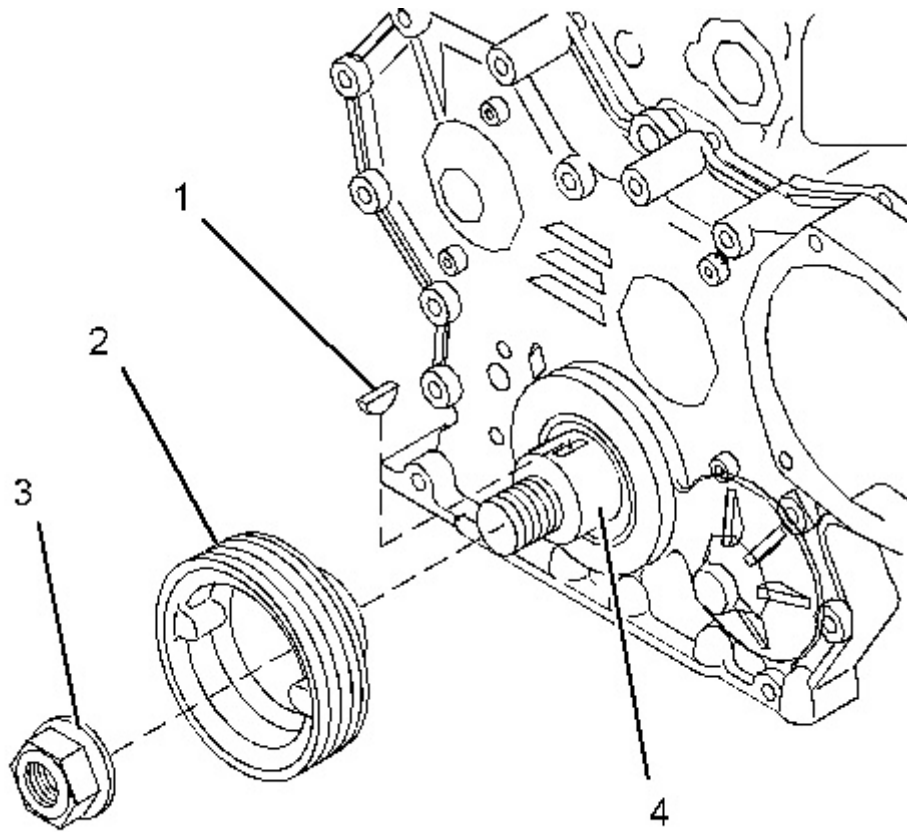
### NOTICE

**Keep all parts clean from contaminants.**

**Contaminants may cause rapid wear and shortened component life.**

---

1. Use a suitable method to prevent the crankshaft from rotating.

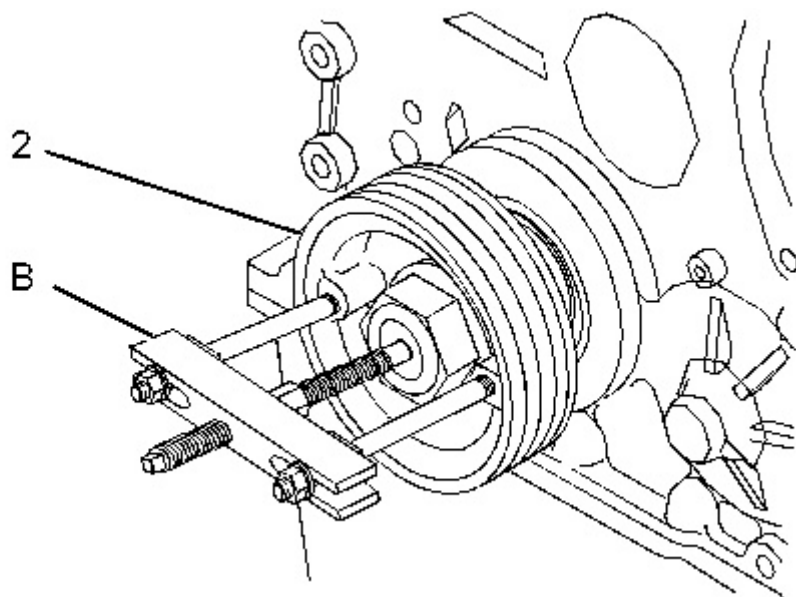


---

Illustration 1

g01335388

Typical example



---

Illustration 2

g01335508

Typical example

2. Use Tooling (A) in order to loosen nut (3) .

**Note:** Do not remove the nut at this time.

3. Install Tooling (B) to crankshaft pulley (2) . Use Tooling (B) to loosen the crankshaft pulley. Remove Tooling (B) .

4. Remove nut (3) and remove crankshaft pulley (2) .

5. If necessary, remove woodruff key (1) from crankshaft (4) .

## Installation Procedure

Table 2

Required Tools			
Tool	Part Number	Part Description	Qty
C	-	Loctite 5900	-

---

### NOTICE

**Keep all parts clean from contaminants.**

**Contaminants may cause rapid wear and shortened component life.**

---

---



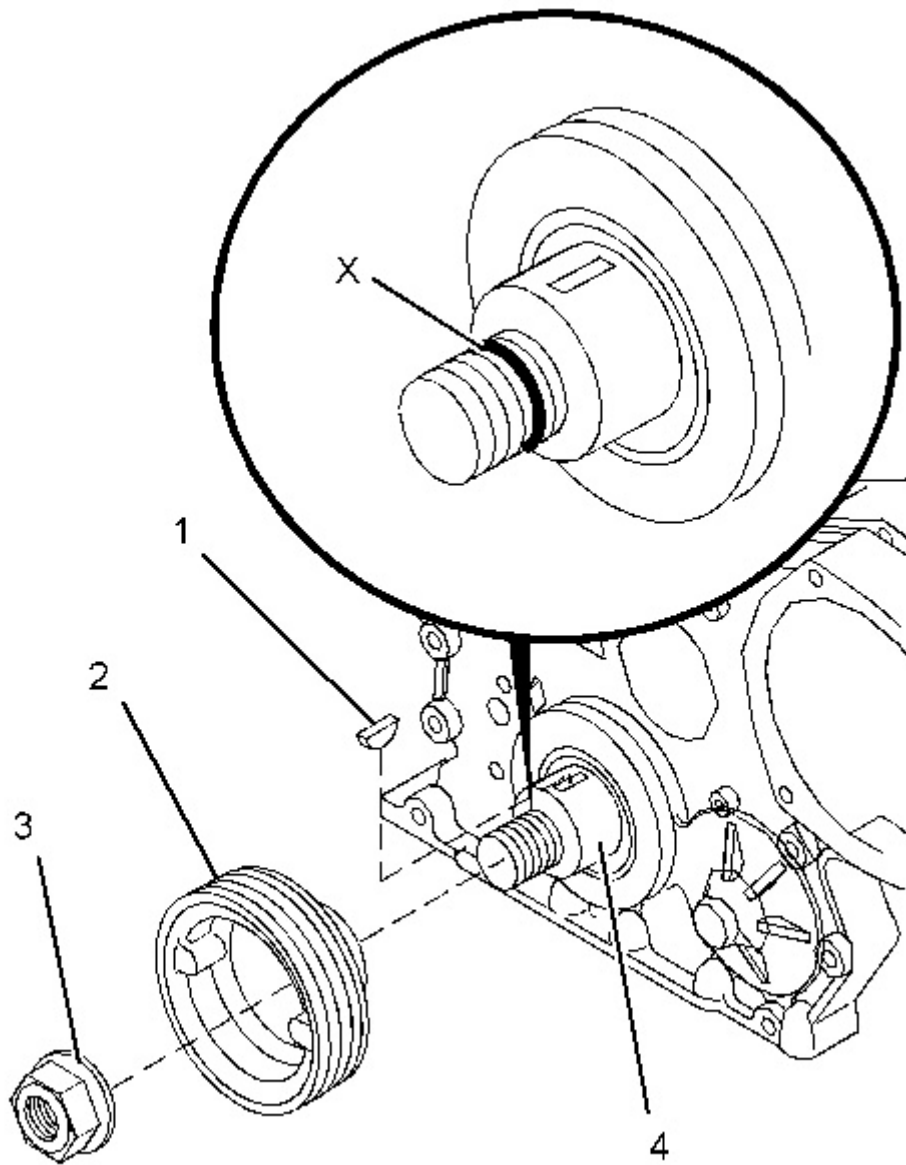


Illustration 3

g01368691

Typical example

1. Ensure that the threads of crankshaft (4) and nut (3) are clean and free from damage. If necessary, install woodruff key (1) to the crankshaft.
2. Apply a continuous bead of Tooling (C) around the threads of crankshaft (4) at position (X) approximately 10 mm (0.4 inch) from the shoulder of the crankshaft.
3. Install pulley (2) to crankshaft (4) .
4. Use a suitable method to prevent the crankshaft from rotating.
5. Install nut (3) . Tighten the nut to a torque of 490 N·m (361 lb ft).

**End By:** Install the V-belt. Refer to Disassembly and Assembly, "V-belts - Remove and Install".

Product: SKID STEER LOADER

Model: 236B SKID STEER LOADER HEN

Configuration: 236B 246B 252B 262B SKID STEER LOADER HEN00001-06749 (MACHINE) POWERED BY 3044C Engine

## Disassembly and Assembly C3.4 Engines for Caterpillar Built Machines

Media Number -KENR6941-04

Publication Date -01/03/2012

Date Updated -01/03/2012

i02639320

# Crankshaft Front Seal - Remove and Install

SMCS - 1160-010

## Removal Procedure

Table 1

Required Tools			
Tool	Part Number	Part Description	Qty
A	1U-8145	Drill Bit (4.10 mm)	1
B	1U-7600	Slide Hammer Puller	1

### Start By:

- A. Remove the crankshaft pulley. Refer to Disassembly and Assembly, "Crankshaft Pulley - Remove and Install".

---

### NOTICE

**Keep all parts clean from contaminants.**

**Contaminants may cause rapid wear and shortened component life.**

---

### NOTICE

**Ensure that the main lip is used in order to remove the crankshaft front seal. Do not damage the edge of the housing for the crankshaft front seal.**

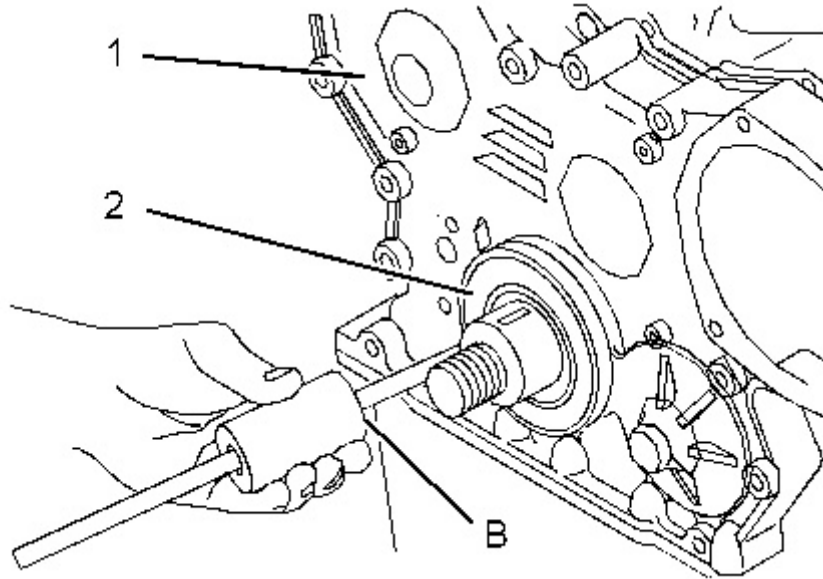


Illustration 1

g01335759

Typical example

1. Use Tooling (A) to drill three evenly spaced holes in crankshaft front seal (2) .
2. Use Tooling (B) to carefully remove crankshaft front seal (2). Alternate the position of Tooling (B) from one hole to another hole. This will allow you to evenly remove the crankshaft front seal from front housing (1) .

## Installation Procedure

Table 2

Required Tools			
Tool	Part Number	Part Description	Qty
C	4C-6376	Seal Installer Stud	1
	4C-6377	Washer	1
	4C-6378	Seal Installer Sleeve	1

### NOTICE

**Keep all parts clean from contaminants.**

**Contaminants may cause rapid wear and shortened component life.**

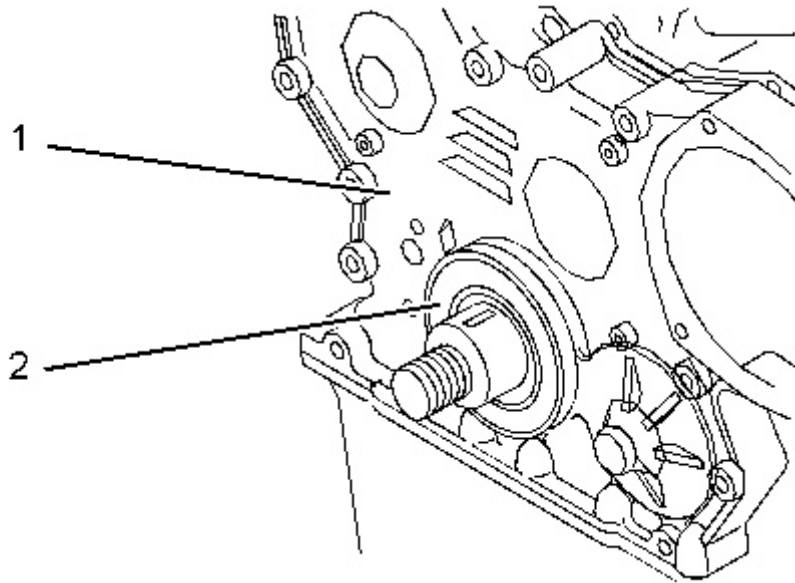


Illustration 2

g01335757

Typical example

1. Ensure that the bore in front housing (1) and the nose of the crankshaft are clean and free from damage.
2. Lubricate the outside diameter of a new crankshaft front seal (2) with clean engine oil.
3. Position crankshaft front seal (2) in the bore of front housing (1) .

---

### NOTICE

**Ensure that the lip of the crankshaft front seal that is spring loaded is facing toward the inside of the front housing and that it is square with the bore of the housing for the crankshaft front seal.**

---

4. Use Tooling (C) to install crankshaft front seal (2) into front housing (1) .
5. Remove Tooling (C) and check for correct installation of crankshaft front seal (2) .
6. Apply clean engine oil to the lip of crankshaft front seal (2) .

**End By:** Install the crankshaft pulley. Refer to Disassembly and Assembly, "Crankshaft Pulley - Remove and Install".

---



**Download the full PDF manual instantly.**

**Our customer service e-mail:**

**[aservicemanualpdf@yahoo.com](mailto:aservicemanualpdf@yahoo.com)**