

PREFACE

When it becomes necessary to replace parts on SUZUKI OUTBOARD MOTORS, always use SUZUKI GENUINE PARTS which have passed a strict inspection which guarantees quality and performance.

This parts catalog covers the list of all service parts for SUZUKI DF90/115 '01~'08 MODEL.

INSTRUCTIONS FOR QUOTING THE CATALOG

1. DIMENSIONS

Dimensions of the parts in this catalog are indicated in unit millimeters.

2. ABBREVIATIONS

Abbreviations used in this catalog are as follows:

AR	: As required	NT	: Number of teeth
ASSY	: Assembly	OPT	: Optional
E.NO.	: Engine number	OS	: Over size
F.NO.	: Frame number	STD	: Standard
D	: Diameter of material	T	: Thickness
ID	: Inside diameter	US	: Under size
OD	: Outside diameter	W	: Width
L	: Length	W/	: with
LH(PORT)	: Left hand side	S,L,X,LL	: Transom type
RH(STBD)	: Right hand side	SUS	: Stainless steel
PTT	: Power trim and tilt		

~123456 : Up to E.NO.09001F-123456

123456~ : From E.NO.09001F-123456

12 x 34 x 5.6..... Figures in the description column

| | | show the dimensions of parts.

ID OD T(or W,L)

→12345-56781 (Parts No.) : indicates that the parts number was changed to 12345-56781 and the new parts are interchangeable with the former ones but the former ones are not interchangeable with new ones.

←12345-56781 (Parts No.) : indicates that the former and new parts are interchangeable with each other and both are usable.

3. INNER PARTS OF ASSEMBLY

Part name with a dot (.) in front as shown in the description column indicates the component of the assembly also available individually.

4. MODIFICATION NOTICE

A parts bulletin will be sent to you on all occasions when changes in parts occur, including interchangeable modifications between new parts and old ones.

5. NOTE

5-1. There are some different parts from those of production models among spare parts for the administrative reasons, and common use of them with other models.

5-2. In respect of rubber hoses and vinyl tubes, please be sure to use them by cutting off according to the length mentioned on parts catalog or what is actually required on the vehicle.

5-3. Note that the drawings on the illustration page are for ready reference of spare parts number, not to be used as an assembly manual. When assembling, use "CUMMINS SERVICE MANUAL".

6. MODEL NAME AND ENGINE NUMBER

MODEL	YEAR'S	TYPE	TRANSOM	ENGINE NO.
DF90TLK1	'01	09001F	L,X	09001F-151001~
DF90TLK2	'02	09001F	L,X	09001F-251001~
DF90TLK3	'03	09001F	L,X	09001F-371001~
DF90TLK4	'04	09001F	L,X	09001F-421001~
DF90TLK5	'05	09001F	L,X	09001F-510001~
DF90TLK6	'06	09001F	L,X	09001F-680001~
DF90TLK7	'07	09001F	L,X	09001F-780001~
DF90TLK8	'08	09001F	L,X	09001F-880001~
DF115TLK1	'01	11501F	L,X	11501F-151001~
DF115TLK2	'02	11501F	L,X	11501F-251001~
DF115TLK3	'03	11501F	L,X	11501F-371001~
DF115TLK4	'04	11501F	L,X	11501F-421001~
DF115TLK5	'05	11501F	L,X	11501F-510001~
DF115TLK7	'07	11501F	L,X	11501F-780001~
DF115TLK8	'08	11501F	L,X	11501F-880001~
DF115ZLK8	'08	11501Z	X	11501Z-880001~

FIG.1

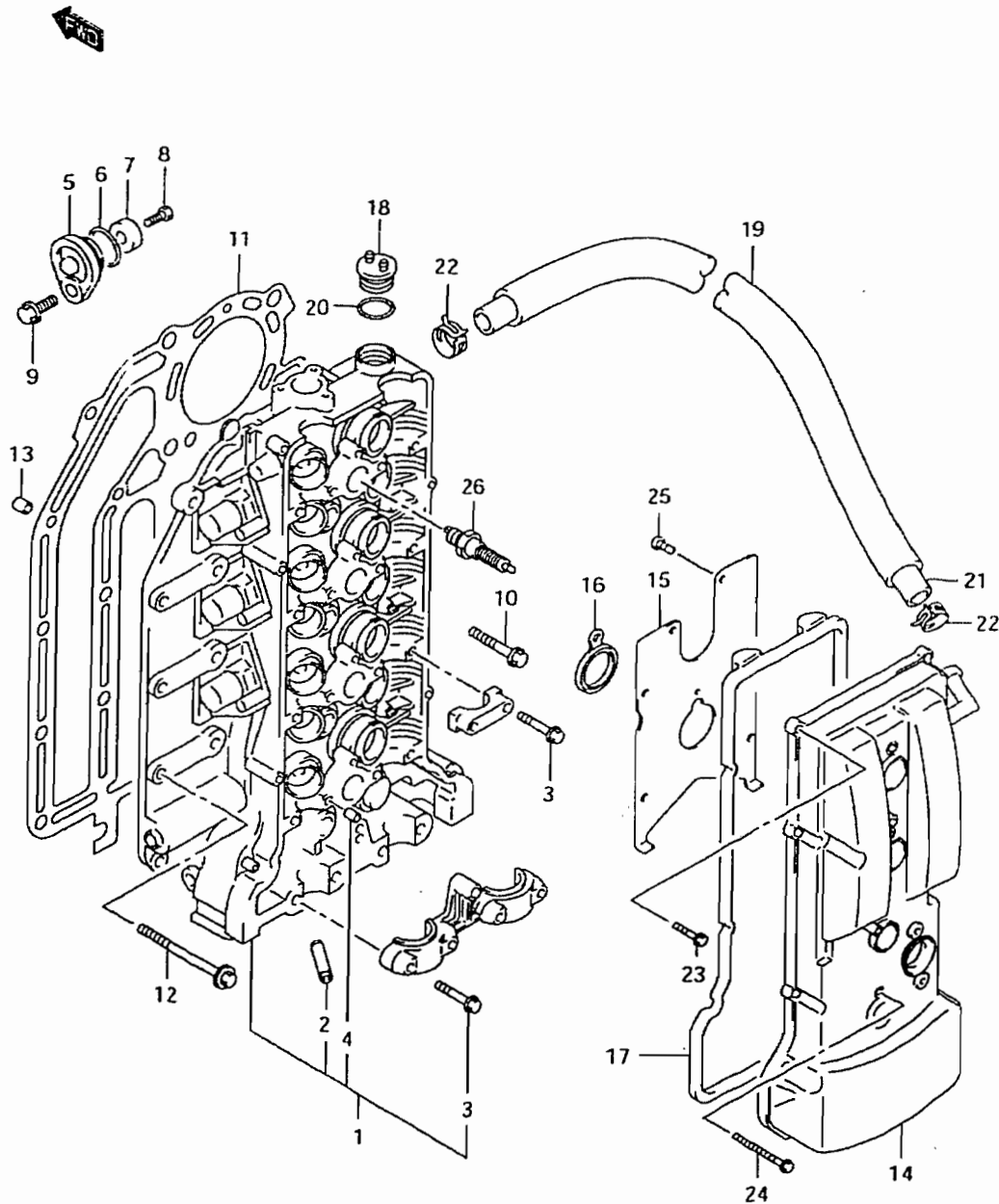


Fig.1 (B-2) CYLINDER HEAD

Ref #	Part Number	Description	Qty	Remarks
1-1	11100-90J00-019	HEAD, CYLINDER (BLACK)	1	->11000-90800-019 (DF90) ->11000-90810-019 (DF115)
1-2	11100-90J01	HEAD, CYLINDER	1	DF90:251001~ DF115:153864~
1-3	11100-90J02	HEAD, CYLINDER	1	INC.NO.5~9 DF90:421060~ DF115:421141~
1-4	11100-90J03	HEAD, CYLINDER	1	DF90:421408~ DF115:421657~
2	11115-85FA1-001	.GUIDE, VALVE	16	
3	11128-90J00	.BOLT, CAM SHAFT HOUSING	21	
4	09206-08001	.PIN	18	
5	11261-93J00	COVER, PROTECTION ANODE	2	DF90:421060~ DF115:421141~
6	09280-22019	O RING	2	DF90:421060~ DF115:421141~
7	55321-87J00	ANODE, PROTECTION	2	DF90:421060~ DF115:421141~
8-1	09128-06021	BOLT, PROTECTION ANODE	2	DF90:421060~ DF115:421141~
8-2	09103-06281	BOLT, PROTECTION ANODE	2	MODEL:06~08
9	01550-08207	BOLT	2	DF90:421060~ DF115:421141~
10	11117-89J00	BOLT, CYLINDER HEAD	10	
11	11141-90J01	GASKET, CYLINDER HEAD	1	
12-1	01550-08507	BOLT	8	
12-2	09116-08125	BOLT, W/WASHER (8X52)	8	DF90:371039~ DF115:371113~
13	04211-13189	PIN	2	
14-1	11170-90J00-019	COVER, CYLINDER HEAD (BLACK)	1	
14-2	11170-90J00	COVER, CYLINDER HEAD	1	MODEL:03~08
15	11173-90J00	PLATE, BREATHER	1	
16	11179-90J00	GASKET, SPARK PLUG HOLE	4	
17	11189-90J00	GASKET, CYLINDER HEAD COVER	1	

FIG.1

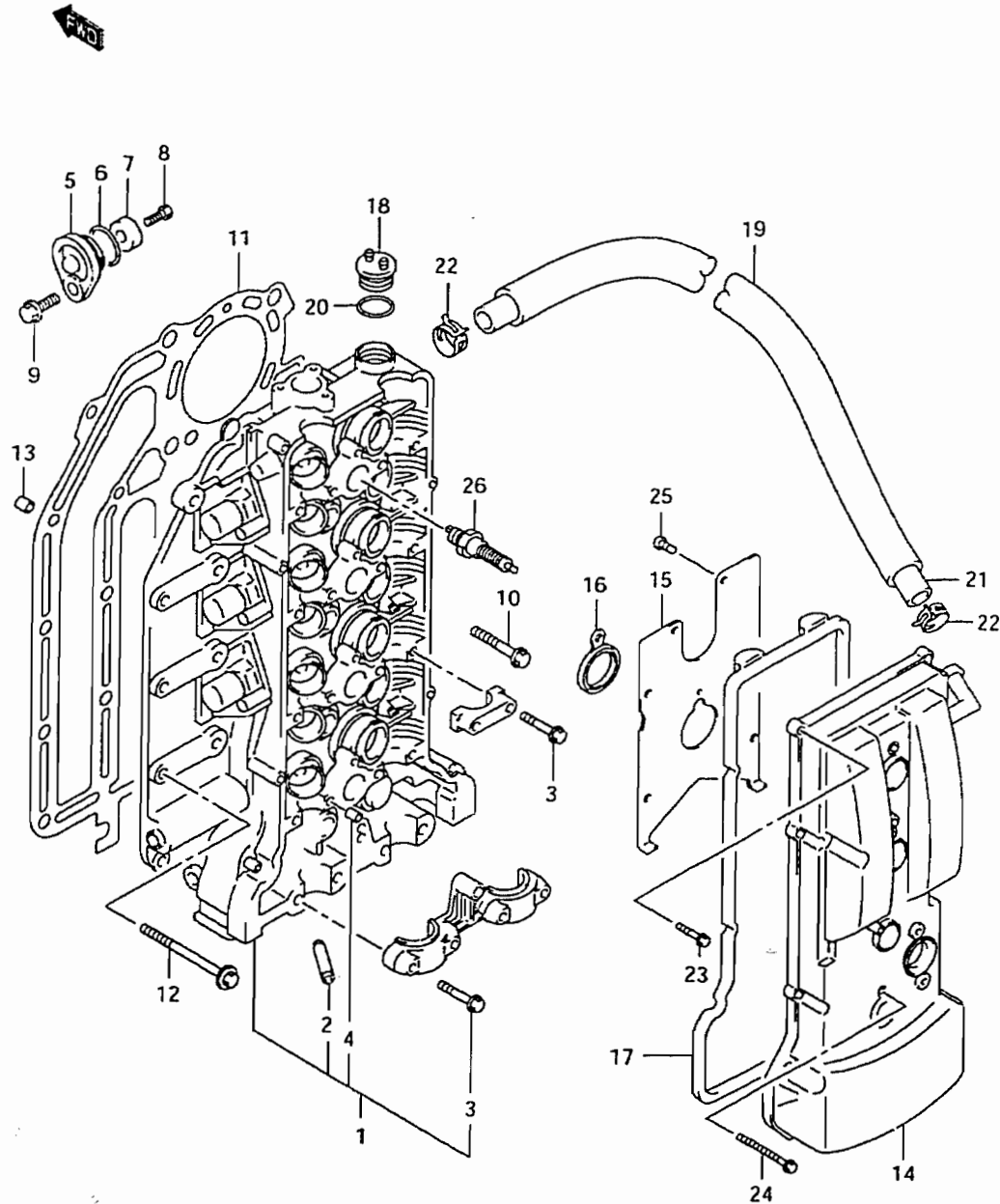


Fig.1 (B-3) CYLINDER HEAD

Ref #	Part Number	Description	Qty	Remarks
18	11382-99E00	CAP, OIL FILLER	1	
19	18498-90J20	PROTECTOR, BREATHER HOSE	1	L:590
20	09280-26006	O RING (D:3.1, ID:26.4)	1	
21	09355-13207-00B	HOSE, BREATHER	1	L:2000->660
22	17829-90J00	CLIP	2	
23	01547-06257	BOLT	11	
24	01547-06557	BOLT	4	
25	02112-0612A	SCREW	7	
26	09482-00427	SPARK PLUG (BKR6E)	4	

FIG.2

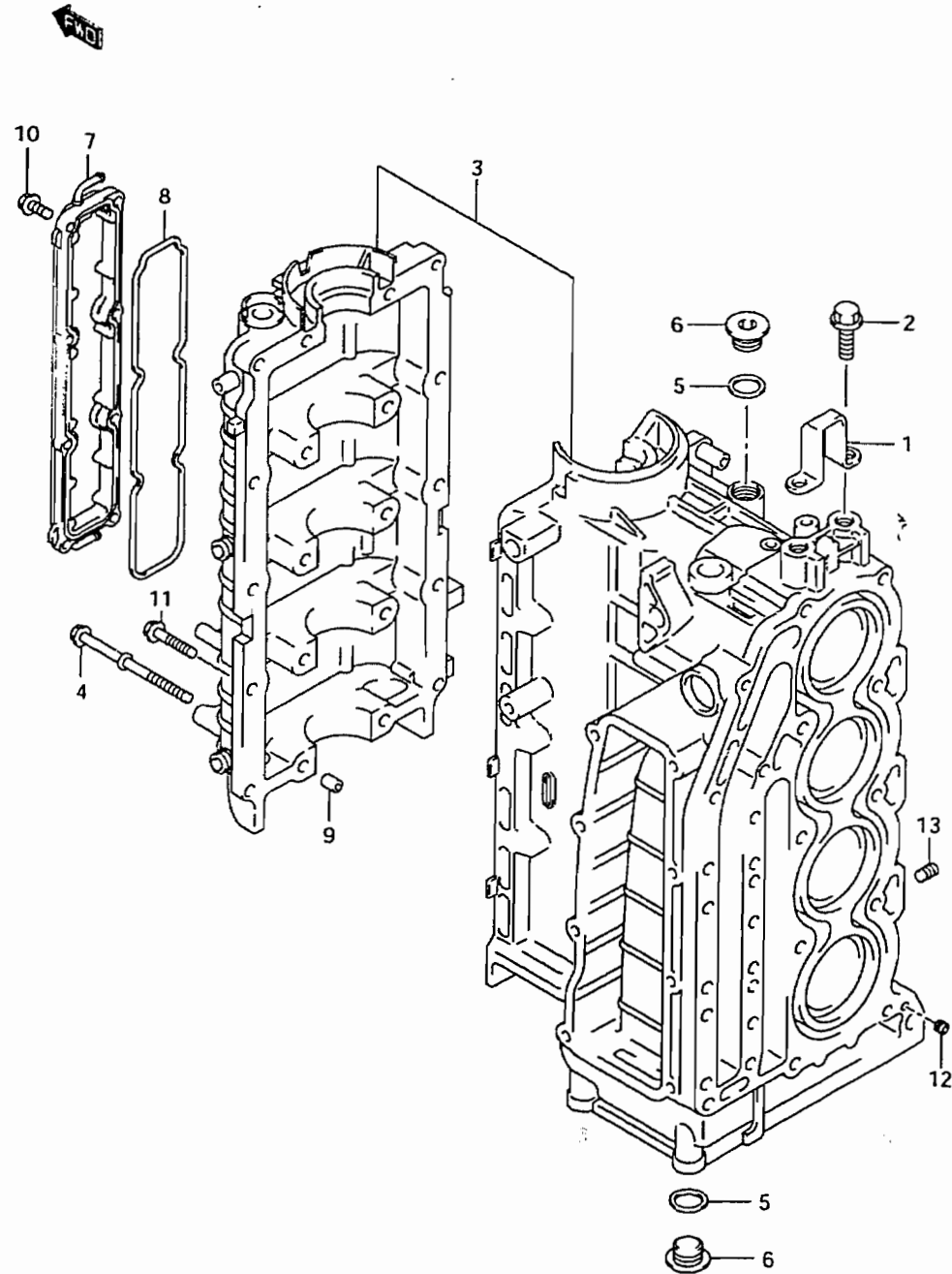
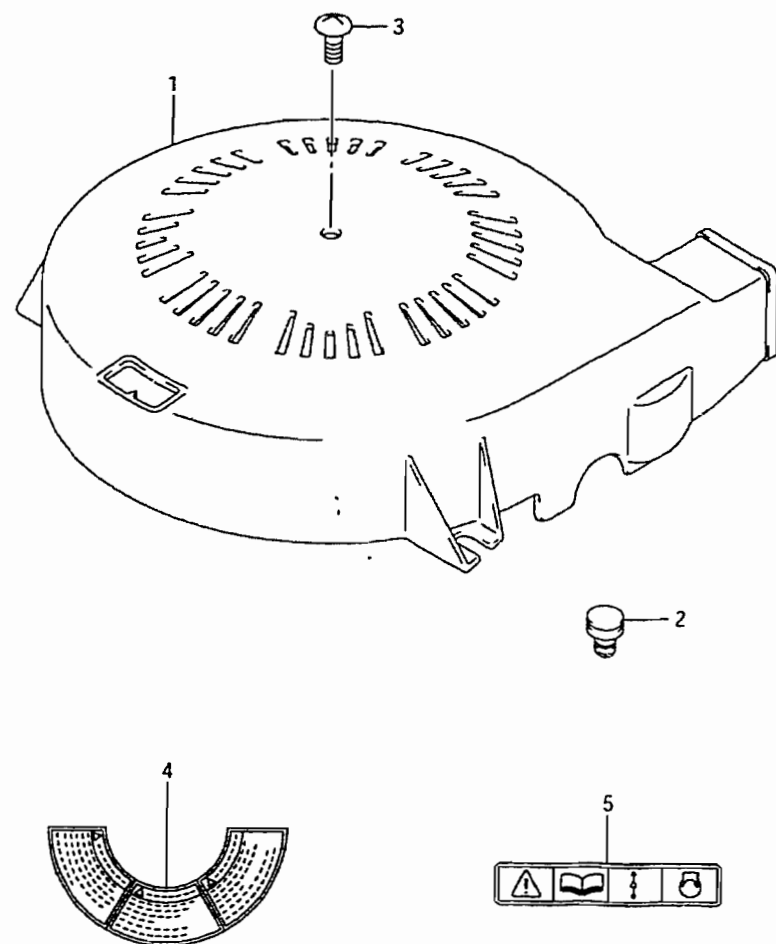


Fig.2 (B-4) CYLINDER BLOCK

Ref #	Part Number	Description	Qty	Remarks
1-1	11291-90J00-019	HOOK, ENGINE (BLACK)	1	
1-2	11291-90J10	HOOK, ENGINE	1	MODEL:03~08
2	01550-12307	BOLT	2	
3-1	11300-90J00	BLOCK, CYLINDER	1	
3-2	11300-90J11	BLOCK, CYLINDER	1	MODEL:04~08
4	11117-90J01	.BOLT, CRANKCASE	10	
5	11216-77E00	.GASKET, OIL GALLERY PLUG	3	
6	09248-18011	.PLUG, OIL GALLERY	3	
7	11330-90J00	.COVER, CRANKCASE WATER JACKET	1	
8	11332-90J00	.O RING, CRANKCASE WATER JACKET COVER	1	
9	09206-13019	.PIN	5	
10	01550-06207	.BOLT	8	
11-1	01550-08407	.BOLT	10	
11-2	09116-08124	.BOLT, W/WASHER (8X43)	10	DF90:371039~ DF115:371113~
12	11112-90J00	.PLUG, OIL VENTURI	1	
13	11118-96J00	PLUG	1	

FIG.3

Fig.3 (B-5) RING GEAR COVER



Ref #	Part Number	Description	Qty	Remarks
1	11510-90J00	COVER, RING GEAR	1	
2	11512-99E00	CUSHION, RING GEAR COVER	2	
3	09125-06111	SCREW (6X18)	1	
4	61472-93E32	LABEL, MAG COVER	1	
5	69711-93E10	LABEL, CAUTION	1	

FIG.4

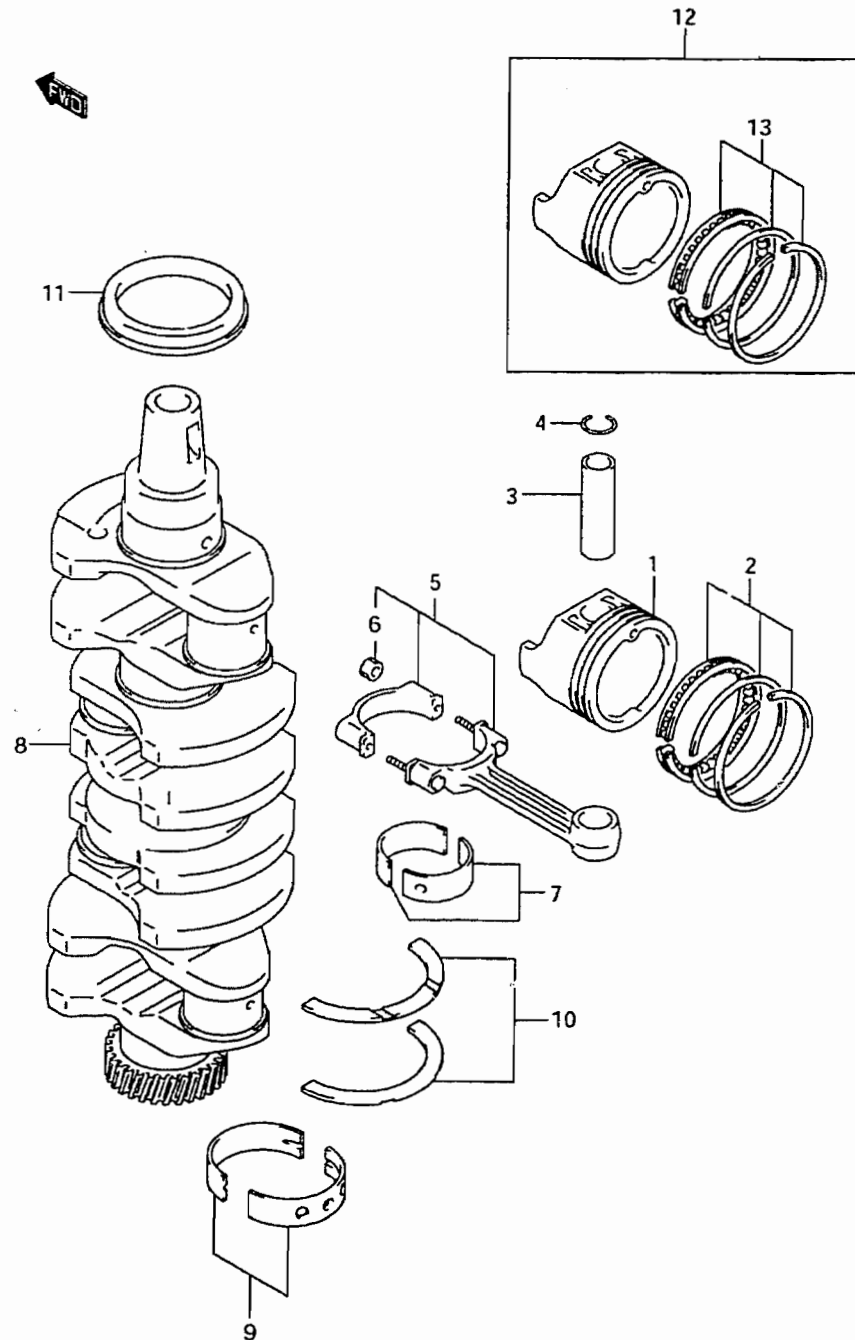


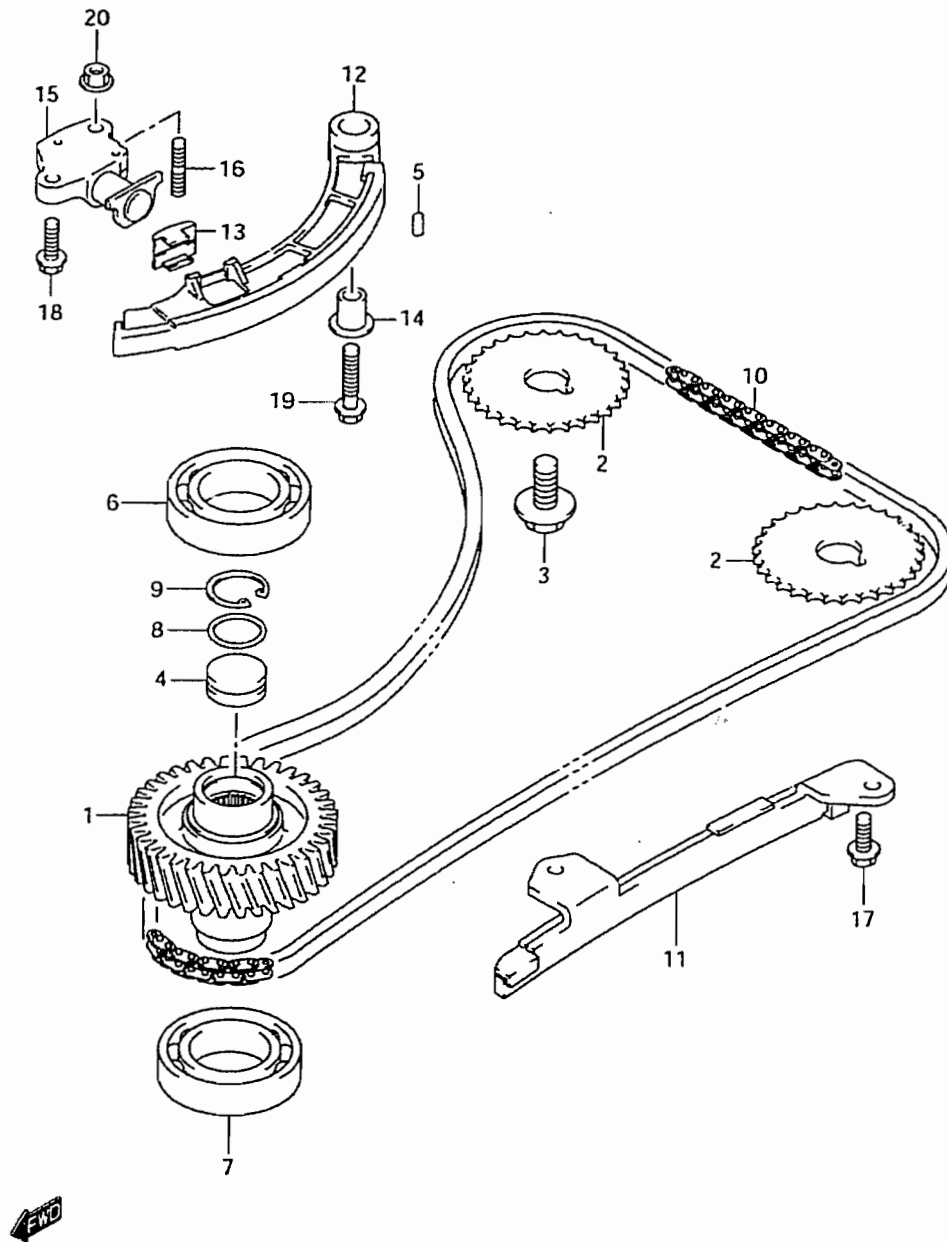
Fig.4 (B-6) CRANKSHAFT

Ref #	Part Number	Description	Qty	Remarks
1	12111-90J01	PISTON	4	
2	12140-86FA0	RING SET, PISTON	4	
3	12151-86FA0	PIN, PISTON	4	
4	09381-21002	CIRCLIP	8	
5-1	12160-90J00	CONNROD ASSY	4	->12160-92J00
5-2	12160-92J00	CONNROD ASSY	4	MODEL:03~08
6-1	09159-08033	.NUT	8	FOR 12160-90J00
6-2	09159-08121	.NUT	8	FOR 12160-92J00
7-1	12100-60821-0A0	BEARING SET, CONNROD	4	FOR 12160-90J00
7-2	12100-92841-0A0	BEARING SET, CONNROD	4	FOR 12160-92J00
7-3	12100-60821-025	BEARING SET, CONNROD (US:0.25)	4	OPT
				FOR 12160-90J00
7-4	12100-92840-025	BEARING SET, CONNROD (US:0.25)	4	OPT
				FOR 12160-92J00
8-1	12220-90J01	CRANKSHAFT	1	->12200-92860
8-2	12220-92J00	CRANKSHAFT	1	DF90:252072~ DF115:252907~
9-1	12340-85FB3-0A0	BEARING SET, CRANKSHAFT	5	GREEN
9-2	12340-85FB3-0B0	BEARING SET, CRANKSHAFT	5	BLACK
9-3	12340-85FB3-0C0	BEARING SET, CRANKSHAFT	5	NON
9-4	12340-85FB3-0D0	BEARING SET, CRANKSHAFT	5	YELLOW
9-5	12340-85FB3-0E0	BEARING SET, CRANKSHAFT	5	BLUE
9-6	12300-85854-0AA	BEARING SET, CRANKSHAFT	5	OPT
		(US:0.25)		
9-7	12300-85854-0BA	BEARING SET, CRANKSHAFT	5	OPT
		(US:0.25)		
9-8	12300-85854-0CA	BEARING SET, CRANKSHAFT	5	OPT
		(US:0.25)		
9-9	12300-85854-0DA	BEARING SET, CRANKSHAFT	5	OPT
		(US:0.25)		
9-10	12300-85854-0EA	BEARING SET, CRANKSHAFT	5	OPT
		(US:0.25)		
10-1	12300-85830	BEARING SET, CRANK THRUST	1	
10-2	12300-85830-012	BEARING SET, CRANK THRUST	1	OPT
		(OS:0.12)		
11	09283-52004	SEAL, OIL	1	
12	12100-90J01-050	PISTON SET (OS:0.50)	4	OPT
13	12140-86FA0-050	.RING SET, PISTON (OS:0.50)	4	OPT

THERE IS A PLAIN BEARING KIT AVAILABLE FOR THIS MODEL
PART NUMBER 99104-DFKIT-005

FIG.5

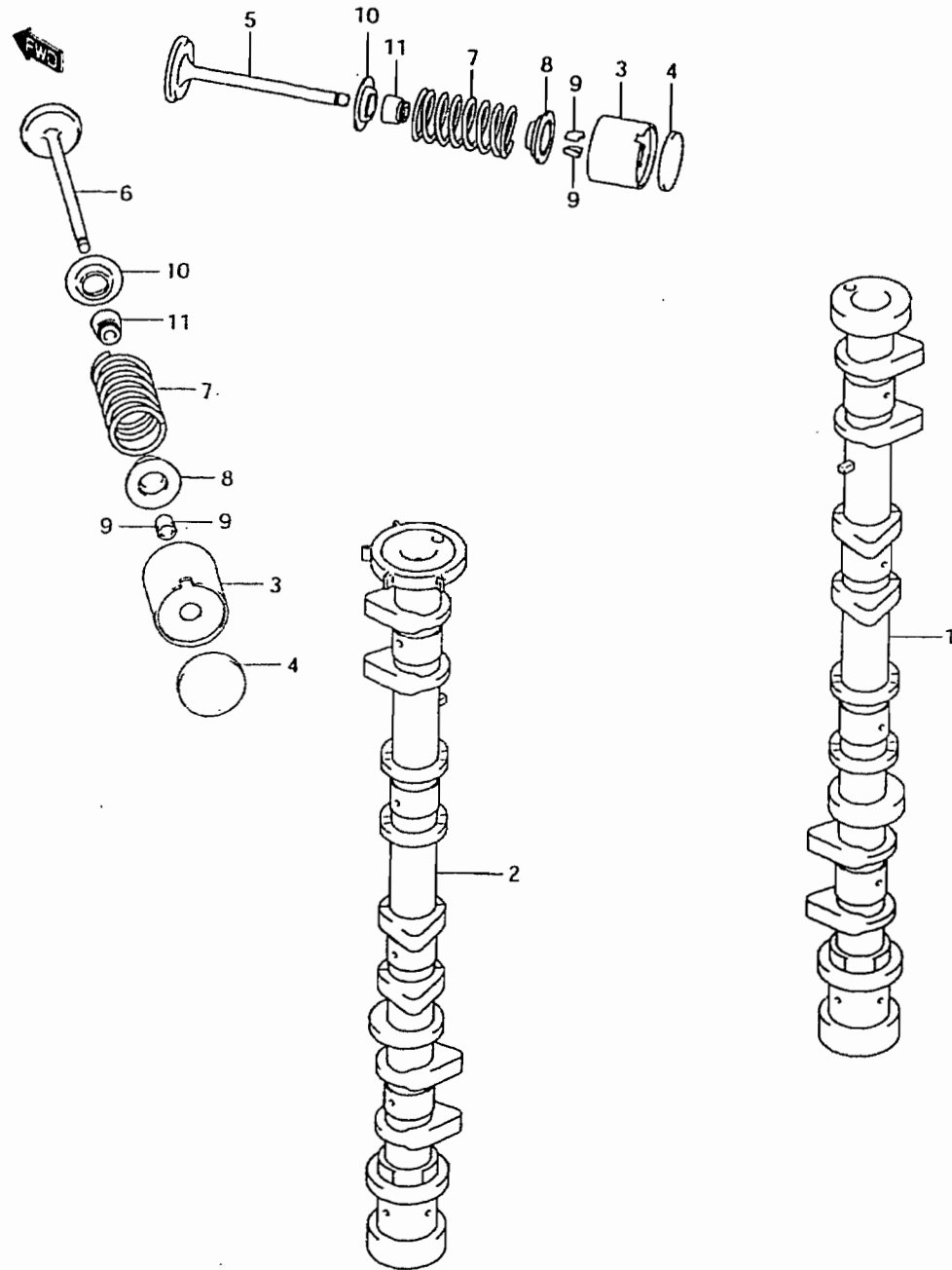
Fig.5 (B-7) TIMING CHAIN



Ref #	Part Number	Description	Qty	Remarks
1	12732-90J00	GEAR, DRIVEN	1	
2	12741-90J00	SPROCKET, CAM SHAFT TIMING	2	
3	09103-12049	BOLT (12X25)	2	
4	12733-90J00	PLUG, DRIVEN GEAR	1	
5	04221-05109	PIN	2	
6	09262-35068	BEARING	1	UPPER
7	09262-35069	BEARING	1	LOWER
8	09280-22022	O RING (D:1.9, ID:21.8)	1	
9	08331-41266	CIRCLIP	1	
10	12761-90J00	CHAIN, TIMING	1	
11	12771-90J00	GUIDE, TIMING CHAIN	1	
12	12810-90J00	TENSIONER, TIMING CHAIN	1	
13	12813-73G00	.PAD, TIMING CHAIN TENSIONER	1	
14	12812-90J00	SPACER, TIMING CHAIN TENSIONER	1	
15-1	12831-90J00	ADJUSTER, TENSIONER	1	
15-2	12831-90J01	ADJUSTER, TENSIONER	1	DF90:371342~ DF115:371818~
15-3	12831-90J02	ADJUSTER, TENSIONER	1	MODEL:05~08
16	01421-0616A	BOLT, STUD	1	
17	01550-0616A	BOLT	2	
18	01550-0620A	BOLT	1	
19	01550-0835A	BOLT	1	
20	08316-1006A	NUT	1	

FIG.6

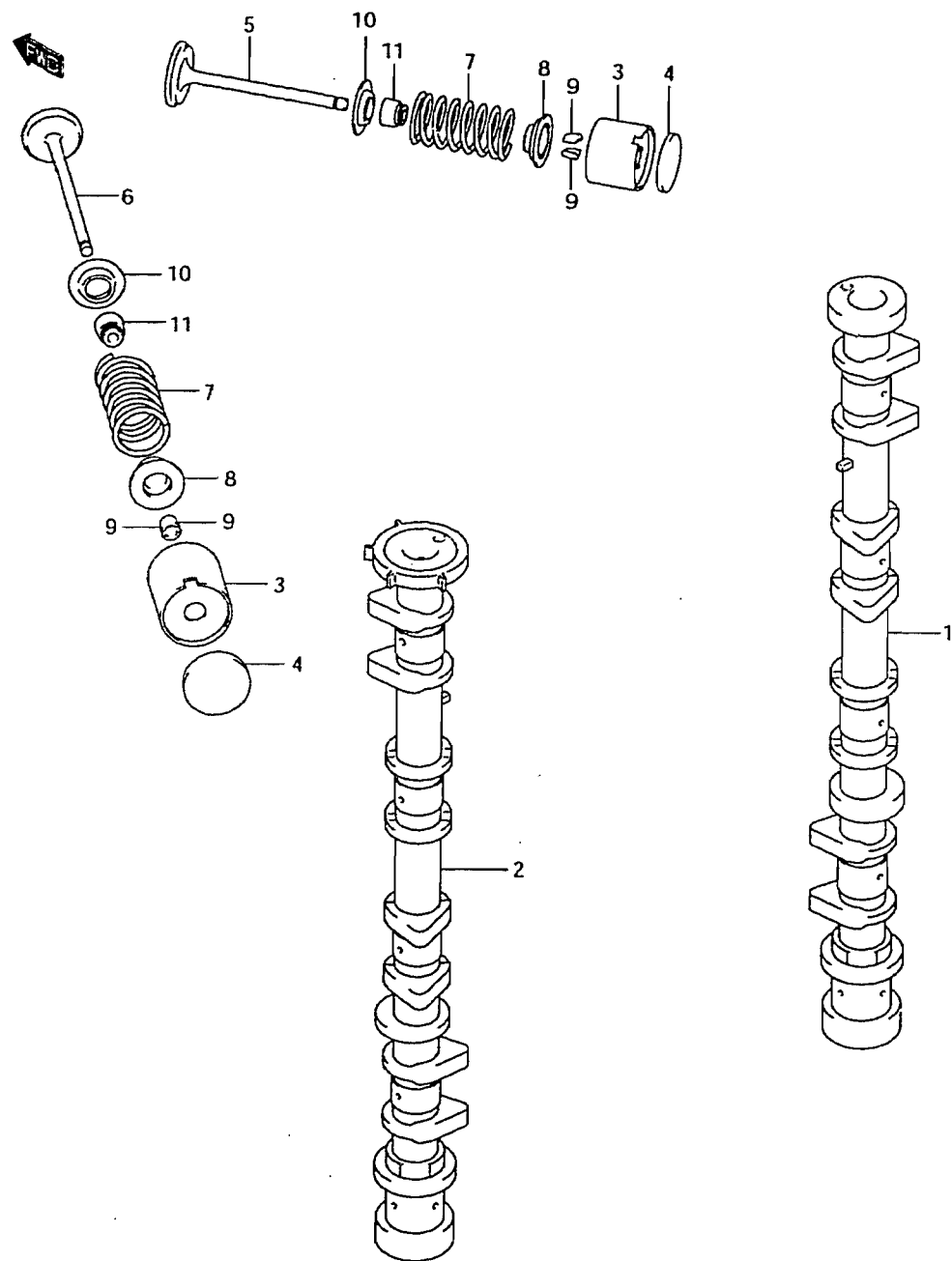
Fig.6 (B-8) CAMSHAFT



Ref #	Part Number	Description	Qty	Remarks
1-1	12711-90J01	CAMSHAFT, INTAKE	1	DF90
1-2	12711-90J11	CAMSHAFT, INTAKE	1	DF115
2-1	12720-90J01	CAMSHAFT, EXHAUST	1	DF90
2-2	12720-90J20	CAMSHAFT, EXHAUST	1	DF115
3	12891-69G00	TAPPET	16	
4-1	12892-69G10-218	SHIM, TAPPET	AR	
4-2	12892-69G10-220	SHIM, TAPPET	AR	
4-3	12892-69G10-223	SHIM, TAPPET	AR	
4-4	12892-69G10-225	SHIM, TAPPET	AR	
4-5	12892-69G10-228	SHIM, TAPPET	AR	
4-6	12892-69G10-230	SHIM, TAPPET	AR	
4-7	12892-69G10-233	SHIM, TAPPET	AR	
4-8	12892-69G10-235	SHIM, TAPPET	AR	
4-9	12892-69G10-238	SHIM, TAPPET	AR	
4-10	12892-69G10-240	SHIM, TAPPET	AR	
4-11	12892-69G10-243	SHIM, TAPPET	AR	
4-12	12892-69G10-245	SHIM, TAPPET	AR	
4-13	12892-69G10-248	SHIM, TAPPET	AR	
4-14	12892-69G10-250	SHIM, TAPPET	AR	
4-15	12892-69G10-253	SHIM, TAPPET	AR	
4-16	12892-69G10-255	SHIM, TAPPET	AR	
4-17	12892-69G10-258	SHIM, TAPPET	AR	
4-18	12892-69G10-260	SHIM, TAPPET	AR	
4-19	12892-69G10-263	SHIM, TAPPET	AR	
4-20	12892-69G10-265	SHIM, TAPPET	AR	
4-21	12892-69G10-268	SHIM, TAPPET	AR	
4-22	12892-69G10-270	SHIM, TAPPET	AR	
4-23	12892-69G10-273	SHIM, TAPPET	AR	
4-24	12892-69G10-275	SHIM, TAPPET	AR	

FIG.6

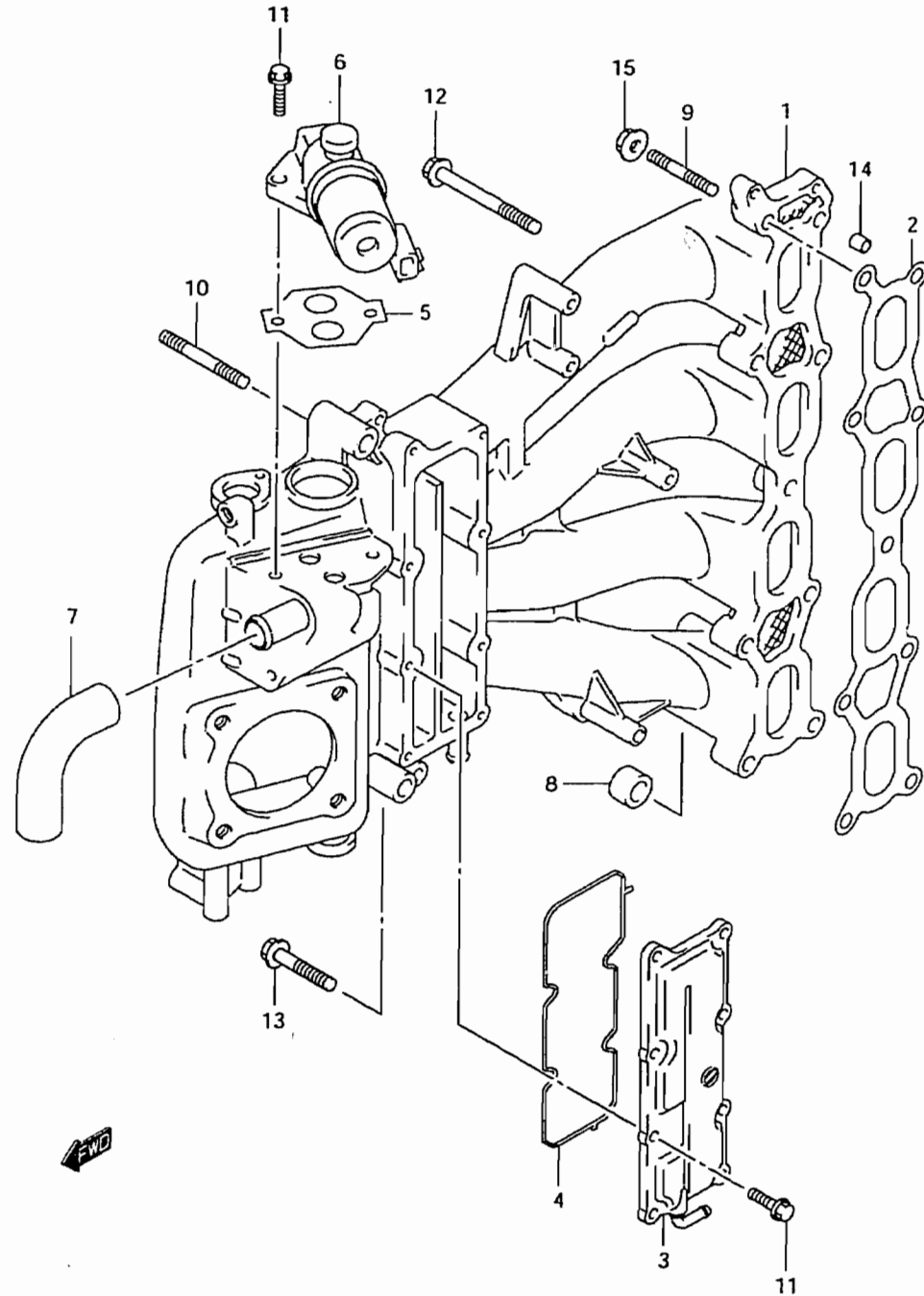
Fig.6 (B-9) CAMSHAFT



Ref #	Part Number	Description	Qty	Remarks
4-25	12892-69G10-278	SHIM, TAPPET	AR	
4-26	12892-69G10-280	SHIM, TAPPET	AR	
4-27	12892-69G10-283	SHIM, TAPPET	AR	
4-28	12892-69G10-285	SHIM, TAPPET	AR	
4-29	12892-69G10-288	SHIM, TAPPET	AR	
4-30	12892-69G10-290	SHIM, TAPPET	AR	
4-31	12892-69G10-293	SHIM, TAPPET	AR	
4-32	12892-69G10-295	SHIM, TAPPET	AR	
4-33	12892-69G10-298	SHIM, TAPPET	AR	
4-34	12892-69G10-300	SHIM, TAPPET	AR	
4-35	12892-90J00-303	SHIM, TAPPET	AR	OPT
4-36	12892-90J00-305	SHIM, TAPPET	AR	OPT
4-37	12892-90J00-308	SHIM, TAPPET	AR	OPT
4-38	12892-90J00-310	SHIM, TAPPET	AR	OPT
4-39	12892-90J00-313	SHIM, TAPPET	AR	OPT
5	12911-86FA1	VALVE, INTAKE	8	
6-1	12915-86F50	VALVE, EXHAUST	8	
6-2	12915-86FA1	VALVE, EXHAUST	8	MODEL:03~08
7	12921-90J00	SPRING, VALVE	16	
8	12931-90J00	RETAINER, VALVE SPRING	16	
9	12932-85FA0	COTTER, VALVE	32	
10	12933-86510	SEAT, VALVE SPRING	16	
11	09289-06003	SEAL, VALVE STEM	16	

FIG.7

Fig.7 (B-10) INTAKE MANIFOLD



Ref #	Part Number	Description	Qty	Remarks
1-1	13110-90J00	MANIFOLD, INTAKE	1	->13110-90J01 USED/W 01550-08557(4)
1-2	13110-90J01	MANIFOLD, INTAKE	1	DF90:251957~ DF115:254652~
1-3	13110-90J02	MANIFOLD, INTAKE	1	MODEL:05~08
2	13119-90J00	GASKET, INTAKE MANIFOLD	1	
3	13140-90J00	COVER, WATER JACKET	1	
4	13145-90J00	O RING, WATER JACKET COVER	1	
5	18134-77E00	GASKET, IAC VALVE	1	
6	18137-77E00	VALVE, IAC	1	
7	18141-90J00	HOSE, IAC	1	
8	09329-12004	CUSHION, INTAKE MANIFOLD	1	
9	01421-08357	BOLT, STUD	1	
10	01421-08507	BOLT, STUD	1	
11	01550-06207	BOLT	10	
12	01550-08407	BOLT	8	
13	01550-08757	BOLT	1	
14	04211-11129	PIN	2	
15	08316-10087	NUT	2	

FIG.8

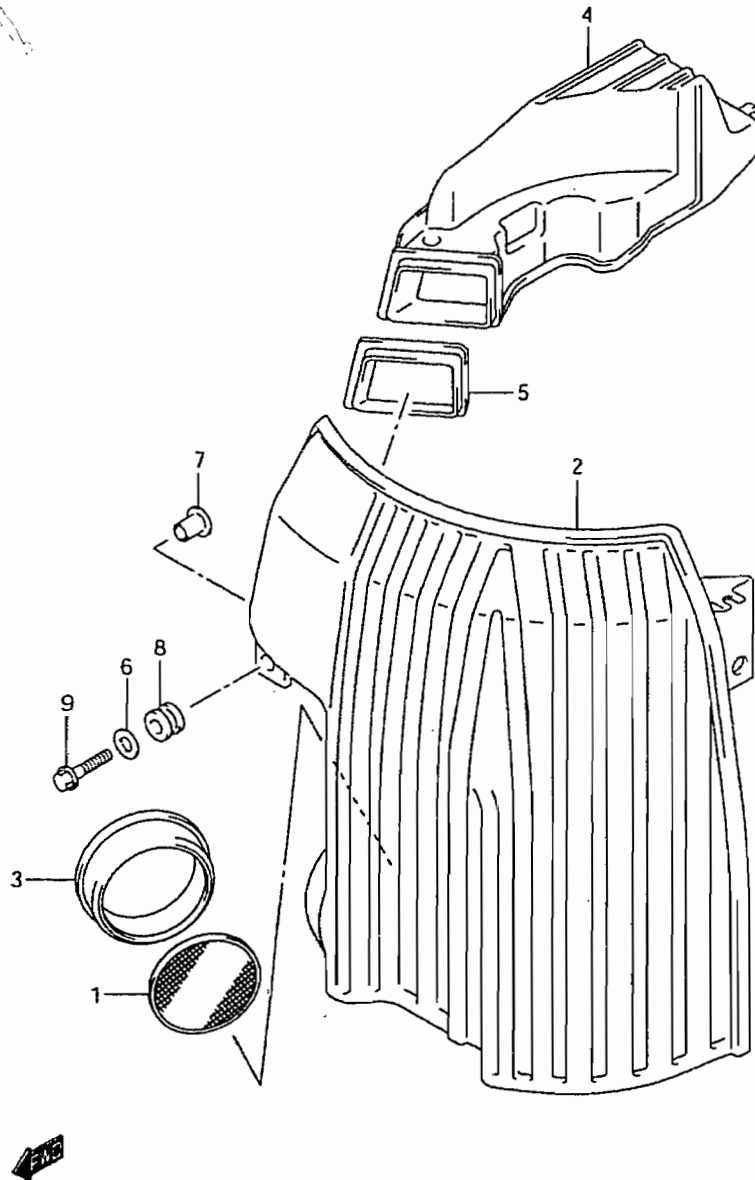


Fig.8 (B-11) SILENCER

Ref #	Part Number	Description	Qty	Remarks
1	13710-99E00	ARRESTER, FLAME	1	
2	13810-90J00	SILENCER	1	
3	13813-90J00	HOLDER, FLAME ARRESTER	1	
4	13840-90J00	DUCT, SILENCER	1	
5	13851-90J00	GROMMET, SILENCER	1	
6	09160-06084	WASHER (6.5X18X1.6)	5	DF90:~781826 DF115:~782718
7	09169-06075	WASHER	5	
8	09320-09039	CUSHION, SILENCER COVER	5	
9-1	01550-06307	BOLT	5	
9-2	09116-06215	BOLT (W/WASHER)	5	DF90:781827~ DF115:782719~

FIG.9

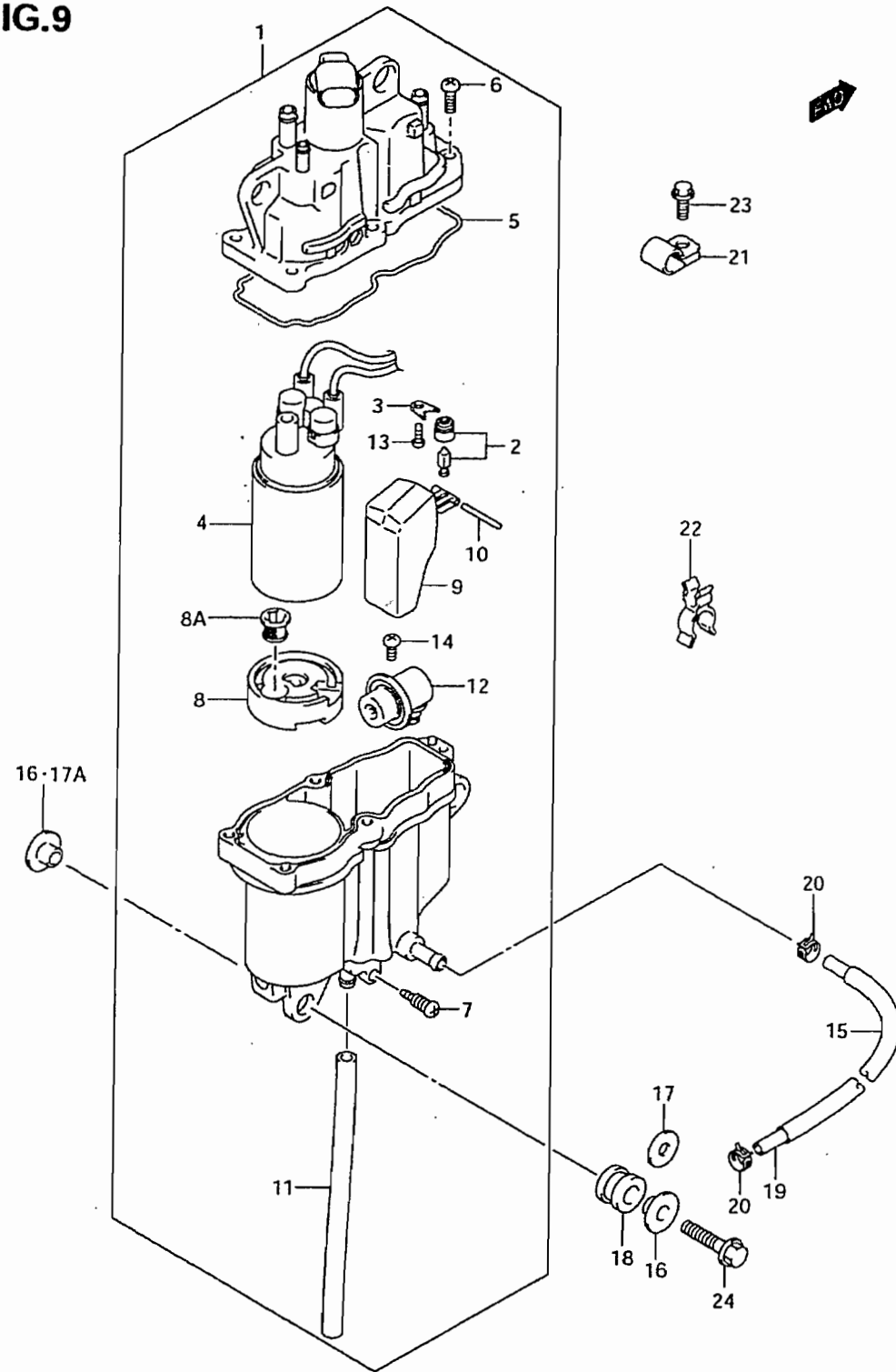


Fig.9 (C-2) FUEL VAPOR SEPARATOR

Ref #	Part Number	Description	Qty	Remarks
1	15600-90J00	SEPARATOR, FUEL VAPOR	1	
2	13370-99E00	.VALVE, NEEDLE	1	
3	13373-39110	.PLATE	1	DF90:~511125 DF115:~512040
4	15200-90J00	.PUMP, FUEL	1	
5	15626-90J00	.SEAL	1	
6	15628-99E00	.SCREW (L:15)	5	
7	15629-99E10	.SCREW, DRAIN	1	
8	15641-90J00	.SPACER	1	
8A	15642-90J00	.FILTER	1	
9	15650-99E00	.FLOAT	1	
10	15654-99E00	.PIN	1	
11	15683-87J00	.HOSE, DRAIN	1	L:240->175
12	15760-87J00	.REGULATOR	1	
13	02142-0408B	.SCREW	1	
14	02112-0510A	.SCREW	1	
15	18498-90J00	PROTECTOR, EVAP HOSE	1	L:290->140
16	09169-06067	WASHER	6	
17	09160-06084	WASHER (6.5X18X1.6)	3	DF90:251684~ MODEL:05 DF115:253070~ MODEL:05
17A	09169-06075	WASHER	3	DF90:251684~ DF115:253070~
18	09320-09039	CUSHION	3	
19	09352-50823-600	HOSE	1	L:600->340
20	17813-90J00	CLIP	2	
21	09403-13408	CLAMP	1	
22	09408-00124	CLAMP	1	MODEL:02~08
23	01550-06127	BOLT	1	
24-1	01550-06257	BOLT	3	
24-2	09116-06202	BOLT (W/WASHER)	3	MODEL:06~08

FIG.10

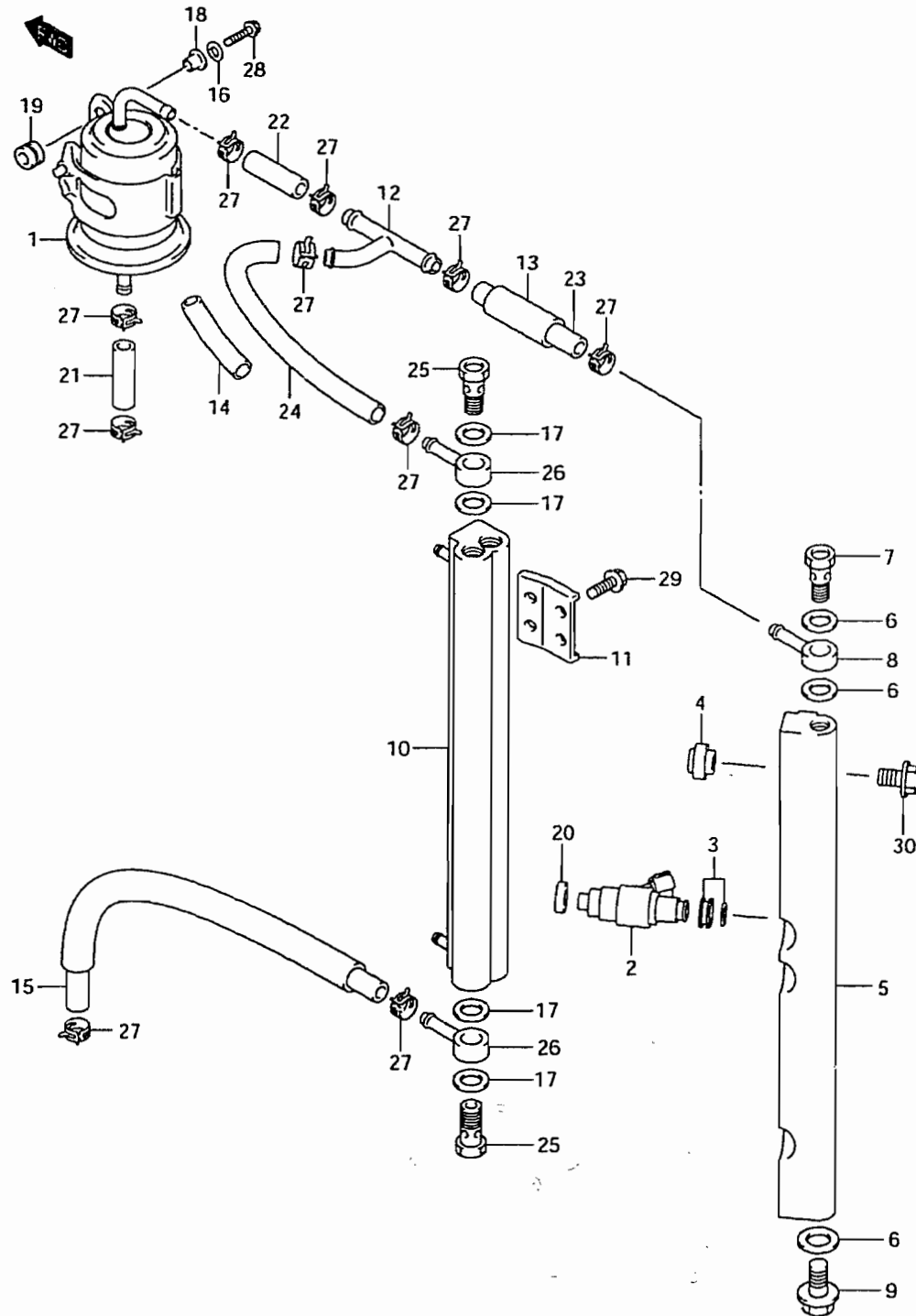


Fig.10 (C-3) FUEL INJECTOR

Ref #	Part Number	Description	Qty	Remarks
1	15440-90J00	FILTER, FUEL	1	
2	15710-65D00	INJECTOR, FUEL	4	
3	15716-65DT0	.GROMMET SET	4	
4	15735-58B00	INSULATOR, DELIVERY PIPE	2	
5	15750-90J00	PIPE, DELIVERY	1	->15751-90J00
6	09168-12013	.GASKET, UNION	3	
7	09360-12008	.BOLT, UNION	1	
8	09363-08004	.UNION	1	
9	01550-12167	.BOLT, DELIVERY PIPE	1	
10	15770-90J01	COOLER, FUEL	1	
11	15775-90J00	BRACKET, FUEL COOLER	2	
12	15830-99E00	UNION, 3 WAY FUEL HOSE	1	
13	18498-99E20	PROTECTOR, FUEL HOSE (L:450)	1	L:450->40
14	18498-99E20	PROTECTOR, FUEL HOSE (L:450)	1	L:450->70
15	15680-90J00	HOSE (COOLER TO SEPARATOR)	1	
16	09160-06084	WASHER (6.5X18X1.6)	2	
17	09168-12013	GASKET	4	
18	09169-06062	WASHER	2	
19	09320-08501	CUSHION	2	
20	09320-08062	CUSHION	4	
21	09356-75137-600	HOSE (SEPARATOR TO FILTER)	1	L:600->50
22	09356-75137-600	HOSE (FILTER TO 3 WAY)	1	L:600->50
23	09356-75137-600	HOSE (3 WAY TO DLVY PIPE)	1	L:600->110
24	09356-75137-600	HOSE (3 WAY TO COOLER)	1	L:600->130
25	09360-12008	UNION	2	
26	09363-08004	UNION, FUEL COOLER	2	
27	09401-11414	CLIP	10	
28	01500-06257	BOLT	2	
29	01550-06167	BOLT	6	
30	01550-08357	BOLT	2	

REFER TO FIG.11 (C-4) FOR DF90T:151862~,DF115T:152527~,
DF115Z

FIG.11

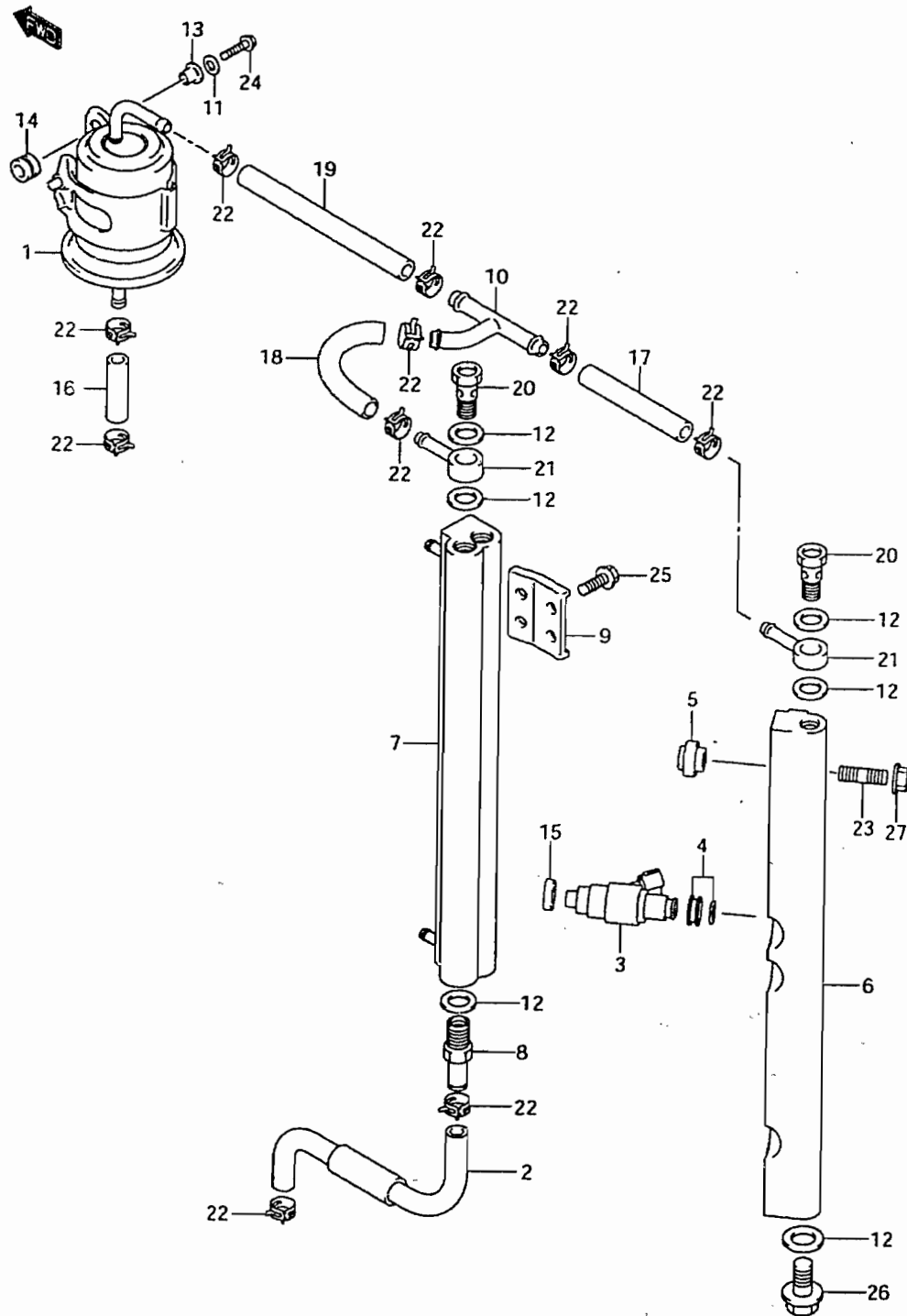


Fig.11 (C-4) FUEL INJECTOR (SEE NOTE)

Ref #	Part Number	Description	Qty	Remarks
1	15440-90J00	FILTER, FUEL	1	
2	15680-90J00	HOSE, FUEL	1	
3	15710-65D00	INJECTOR, FUEL	4	
4	15716-65DT0	.GROMMET SET	4	
5	15735-58B00	INSULATOR, DELIVERY PIPE	2	
6	15751-90J03	PIPE, DELIVERY	1	
7	15770-90J02	COOLER, FUEL	1	
8	15773-90J00	UNION, FUEL HOSE	1	
9	15775-90J00	BRACKET, FUEL COOLER	2	
10	15830-99E00	UNION, 3 WAY FUEL HOSE	1	
11	09160-06084	WASHER (6.5X18X1.6)	2	~MODEL:05
12	09168-12013	GASKET	6	
13	09169-06062	WASHER	2	
14	09320-08501	CUSHION	2	
15	09320-08062	CUSHION	4	
16	09356-75137-600	HOSE (SEPARATOR TO FILTER)	1	L: 600->50
17	09356-75137-600	HOSE (3 WAY TO DLVY PIPE)	1	L: 600->50
18	09356-75137-600	HOSE (3 WAY TO COOLER)	1	L: 600->50
19	09356-75137-600	HOSE (FILTER TO 3 WAY)	1	L: 600->110
20	09360-12008	UNION	2	
21	09363-08004	UNION	2	
22	17822-90J00	CLIP	10	
23	01421-08357	BOLT, STUD	2	
24-1	01500-06257	BOLT	2	
24-2	09116-06202	BOLT (W/WASHER)	2	MODEL:06~08
25	01550-06167	BOLT	6	
26	01550-12167	BOLT	1	
27	08316-10087	NUT	2	

(NOTE): FOR DF90T:151862~,DF115T:152527~,DF115Z

FIG.12

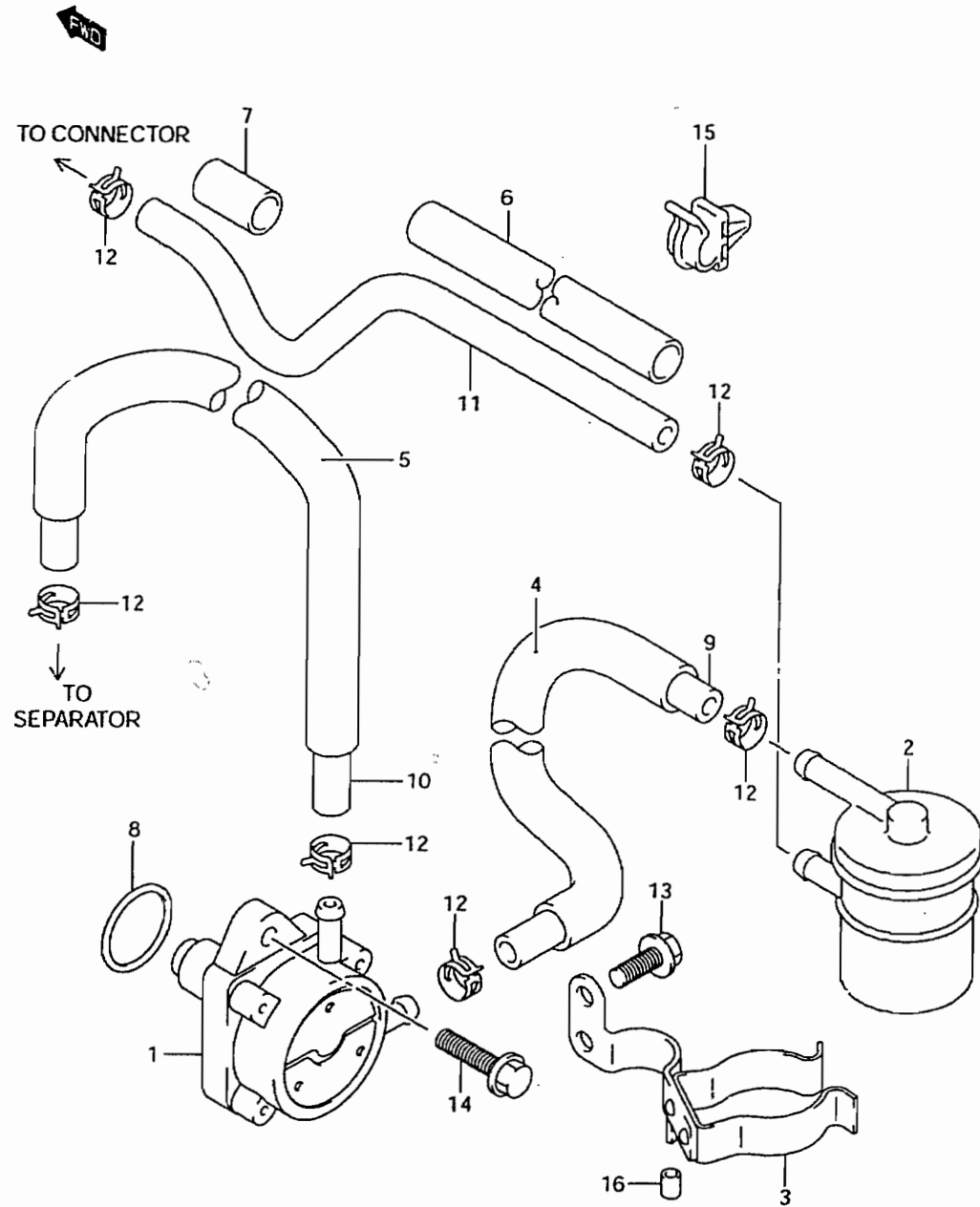


Fig.12 (C-5) FUEL PUMP

Ref #	Part Number	Description	Qty	Remarks
1	15100-90J10	PUMP, FUEL	1	<-15100-90J00
2	15410-87J10	FILTER, FUEL	1	
3-1	15420-90J01	BRACKET, FUEL FILTER	1	
3-2	15420-90J10	BRACKET, FUEL FILTER	1	MODEL:04~06
4	18498-99E10	PROTECTOR, FUEL HOSE (610)	1	L:610->230
5	18498-99E10	PROTECTOR, FUEL HOSE (610)	1	L:610->450
6	18498-99E10	PROTECTOR, FUEL HOSE (610)	1	L:610->510
7	18498-99E10	PROTECTOR, FUEL HOSE (610)	1	L:610->160
8	09280-26005	O RING (D:2.4, ID:26.2)	1	
9	15192-90J00	HOSE, FUEL (FILTER TO PUMP)	1	
10	09355-70125-600	HOSE, FUEL (PUMP TO SEPARATOR)	1	L:600->530
11	15191-90J00	HOSE, FUEL (CONN TO FILTER)	1	
12	09401-11407	CLIP	6	
13	01550-06167	BOLT	2	
14	01550-06257	BOLT	2	
15	09403-11314	CLAMP	1	
16	09320-05016	CUSHION	1	

REFER TO FIG.13(C-6) FOR DF90T:680686~,DF115T:681518~, DF115Z



Download the full PDF manual instantly.

Our customer service e-mail:

aservicemanualpdf@yahoo.com