

# Instructions for Parts Books

The heading at the top of the page will be the same for the picture of the parts at it is for the page with the part numbers.

Definition of column headings on part number pages:

**REF.No** → The number referring to the part on the picture page of the parts book.

**Part No.** → The number assigned to this part at the time of printing the parts book.

**Description** → Discription of part.

**Q'ty** → Quantity of part used on that page.

**S.No.** → Serial number range of the equipment that this part will fit.

>= Your serial number should be greater than or equal to the number shown.

<= Your serial number should be lesser than or equal to the serial number shown.

**I/C** → Interchangeability of part shown.

↔ The part shown will work for the older and later serial number.

# The part shown is not interchangeable with the other serial number.

← new for old

→ old for new

**Remarks** → Notes about this particulart part. Sometimes this may say except [FR] or [CA]

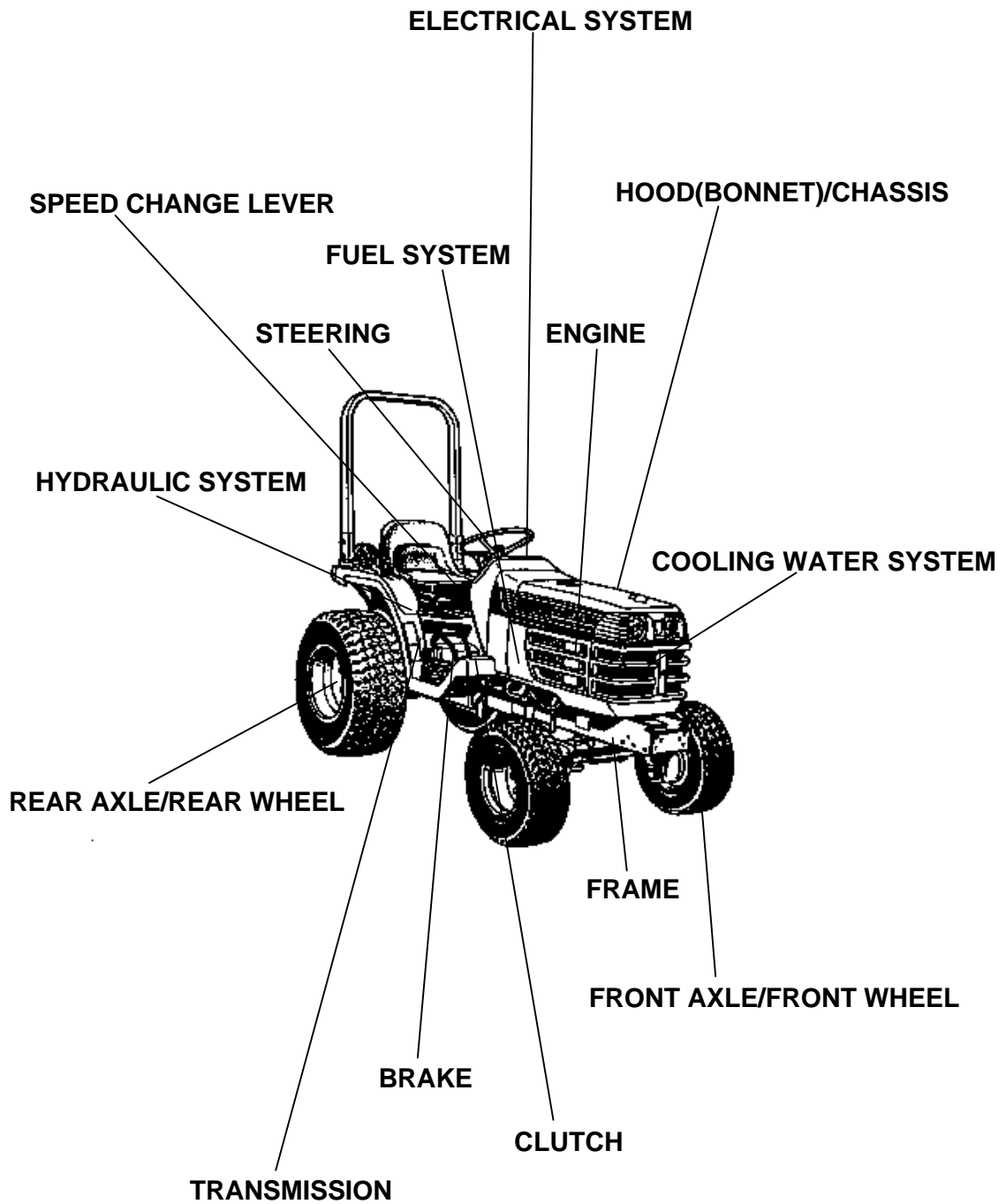
## Note about Country Codes:

The parts books we use in the United States of America may also contain information about a part that would be different in another country. It is important that you are aware of the country codes in some instances.

Symbol	Country
A	United States of America
CA	Canada
FR	France
GR	Greece
PO	Portugal
AU	Australia

If the remarks column says for example EXCEPT [FR] this part works in all countries except France. That means it will work here in the USA.

ALL PRODUCT INDEX  
B7300HSD

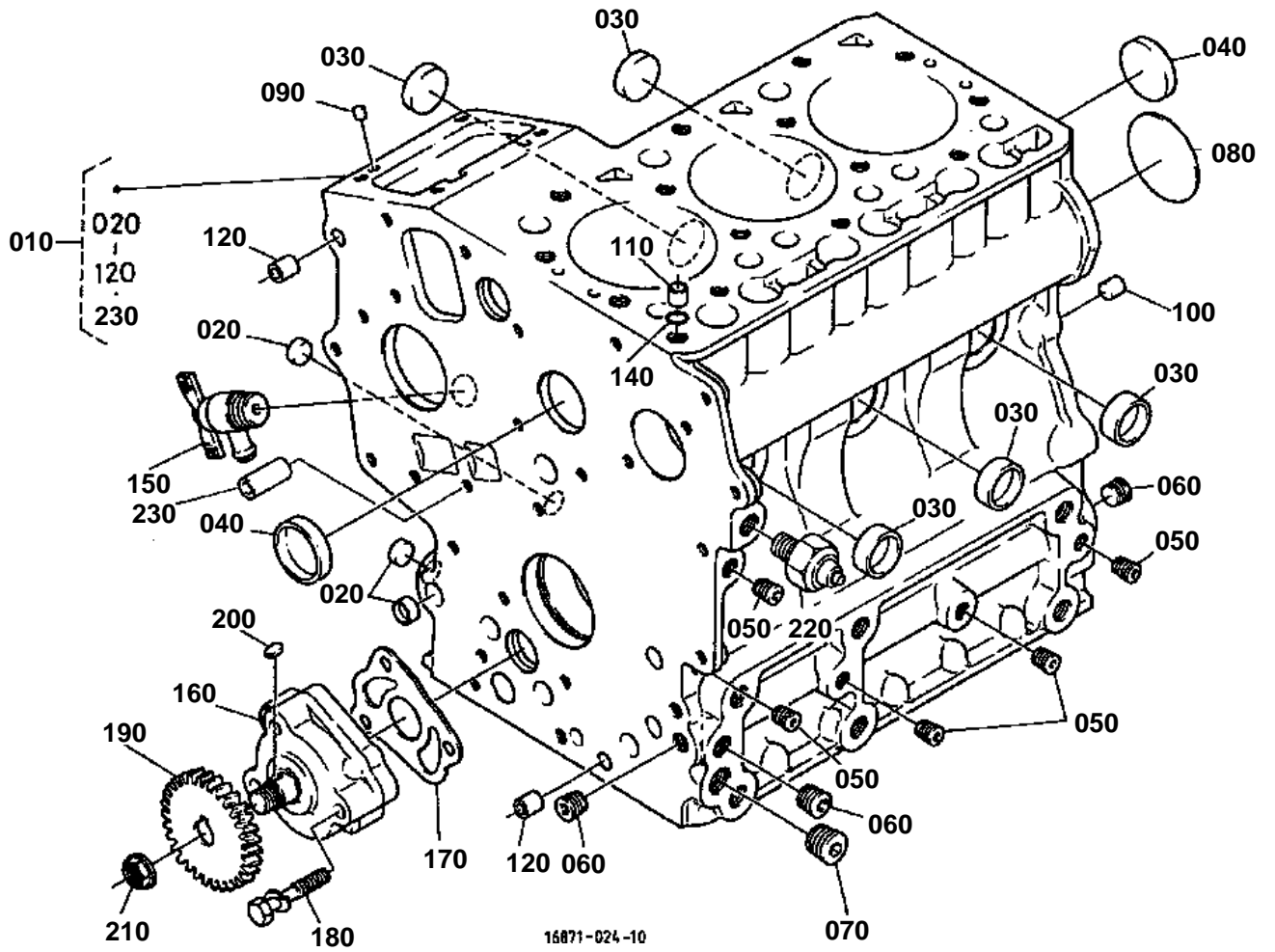


LABELS  
ACCESSORIES

Item	Part No.	Description	Book	
ENGINE	01T001	CRANKCASE	100K0314	
	01T002	OIL PAN	100K0314	
	01T003	PISTON/CRANKSHAFT	100K0314	
	01T004	MAIN BEARING CASE	100K0314	
	01T005	FLYWHEEL	100K0314	
	01T006	CYLINDER HEAD	100K0314	
	01T007	VALVE AND ROCKER ARM	100K0314	
	01T008	NOZZLE HOLDER AND GLOW PLUG	100K0314	
	01T009	NOZZLE HOLDER [COMPONENT PARTS]	100K0314	
	01T010	HEAD COVER	100K0314	
	01T011	INLET MANIFOLD	100K0314	
	01T013	EXHAUST MANIFOLD	100K0314	
	01T015	CAMSHAFT	100K0314	
	01T016	GEAR CASE	100K0314	
	01T017	WATER PUMP	100K0314	
	01T018	WATER FLANGE/THERMOSTAT	100K0314	
	01T019	INJECTION PUMP	100K0314	
	01T020	INJECTION PUMP [COMPONENT PARTS]	100K0314	
	01T021	SPEED CONTROL PLATE	100K0314	
	01T022	GOVERNOR	100K0314	
	01T023	FUEL PUMP	100K0314	
	01T024	LOWER GASKET KIT	100K0314	
	01T025	UPPER GASKET KIT	100K0314	
	ELECTRICAL SYSTEM	01T034	DYNAMO	100K0314
		01T035	DYNAMO [COMPONENT PARTS]	100K0314
CLUTCH	01T044	CLUTCH	100K0314	
HYDRAULIC SYSTEM	01T083	HYDRAULIC GEAR PUMP	100K0314	
	01T084	HYDRAULIC GEAR PUMP [COMPONENT PARTS]	100K0314	
ENGINE	02T012	AIR CLEANER	100K0314	
	02T014	MUFFLER	100K0314	
	02T026	ACCELERATOR LEVER	100K0314	
FUEL SYSTEM	02T027	FUEL TANK	100K0314	
	02T028	FUEL PIPE	100K0314	
	02T029	FUEL FILTER [COMPONENT PARTS]	100K0314	
COOLING WATER SYSTEM	02T030	WATER PIPE	100K0314	
	02T031	RADIATOR	100K0314	
	02T032	RESERVE TANK	100K0314	
	02T033	FAN	100K0314	
ELECTRICAL SYSTEM	02T036	STARTER	100K0314	
	02T037	STARTER [COMPONENT PARTS]	100K0314	
	02T038	BATTERY	100K0314	
	02T039	HEAD LIGHT	100K0314	
	02T040	HAZARD LIGHT/TAIL LIGHT	100K0314	
	02T041	METER/SWITCH	100K0314	
	02T04102	METER KIT	100K0314	
	02T042	METER [COMPONENT PARTS]	100K0314	
	02T043	WIRE HARNESS	100K0314	
	CLUTCH	02T045	CLUTCH ROD	100K0314
02T046		CLUTCH PEDAL	100K0314	
02T047		CLUTCH HOUSING	100K0314	
TRANSMISSION	02T048	CLUTCH SHAFT/PROPELLER SHAFT	100K0314	
	02T049	TRANSMISSION CASE	100K0314	
	02T050	DIFFERENTIAL GEAR CASE	100K0314	
	02T051	HST	100K0314	
	02T052	HST [COMPONENT PARTS]	100K0314	
	02T053	2ND/3RD/4TH SHAFT	100K0314	
	02T054	5TH SHAFT/PTO SHAFT	100K0314	

Item	Part No.	Description	Book	
TRANSMISSION	02T055	FRONT WHEEL DRIVE SHAFT	100K0314	
	02T056	MID PTO	100K0314	
SPEED CHANGE LEVER	02T057	SPEED CHANGE LEVER	100K0314	
	02T058	SPEED CONTROL PEDAL	100K0314	
	02T059	SPEED SET LEVER	100K0314	
	02T060	RANGE GEAR SHIFT LEVER	100K0314	
	02T061	PTO GEAR SHIFT LEVER	100K0314	
	02T062	FRONT WHEEL DRIVE LEVER	100K0314	
	02T063	REAR DIFFERENTIAL	100K0314	
	02T064	DIFFERENTIAL LOCK PEDAL	100K0314	
	REAR AXLE/REAR WHEEL	02T065	REAR AXLE CASE	100K0314
		02T066	REAR AXLE	100K0314
02T06701		REAR WHEEL (29 X 12.5-15)	100K0314	
02T06702		REAR WHEEL (8.3-16)	100K0314	
02T06703		REAR WHEEL (31 X 15.5-15)	100K0314	
BRAKE	02T068	BRAKE	100K0314	
	02T069	BRAKE PEDAL	100K0314	
	02T070	PARKING BRAKE LEVER	100K0314	
FRONT AXLE/FRONT WHEEL	02T071	FRONT DRIVE SHAFT	100K0314	
	02T072	FRONT DIFFERENTIAL	100K0314	
	02T073	FRONT AXLE CASE	100K0314	
	02T074	FRONT BEVEL GEAR CASE	100K0314	
	02T075	FRONT AXLE	100K0314	
	02T07601	FRONT WHEEL (6-12)	100K0314	
	02T07602	FRONT WHEEL (21 X 8.00-10)	100K0314	
	02T077	FRAME	100K0314	
FRAME STEERING	02T078	KNUCKLE ARM/TIE ROD	100K0314	
	02T079	DRAG LINK	100K0314	
	02T080	STEERING WHEEL	100K0314	
	02T081	STEERING	100K0314	
	02T082	STEERING [COMPONENT PARTS]	100K0314	
HYDRAULIC SYSTEM	02T085	HYDRAULIC OIL LINE (OIL COOLER)	100K0314	
	02T086	HYDRAULIC OIL LINE (T/M)	100K0314	
	02T087	HYDRAULIC OIL LINE (SUCTION/DELIVERY)	100K0314	
	02T088	FLOW DIVIDING VALVE [COMPONENT PARTS]	100K0314	
	02T089	HYDRAULIC OIL LINE (HST)	100K0314	
	02T090	OIL COOLER	100K0314	
	02T091	HYDRAULIC CYLINDER CASE	100K0314	
	02T092	CONTROL VALVE	100K0314	
	02T093	CONTROL VALVE [COMPONENT PARTS]	100K0314	
	02T094	HYDRAULIC CONTROL LEVER	100K0314	
HOOD(BONNET)/CHASSIS	02T095	TOP LINK	100K0314	
	02T096	LOWER LINK	100K0314	
	02T097	LIFT ROD	100K0314	
	02T098	HOOD (BONNET)	100K0314	
	02T099	FRONT GRILLE	100K0314	
	02T100	SIDE COVER	100K0314	
	02T101	FENDER LH	100K0314	
	02T102	FENDER RH	100K0314	
	02T103	SEAT STAY	100K0314	
	02T104	SEAT	100K0314	
	02T105	STEP	100K0314	
	02T106	ROPS	100K0314	
	02T107	LABEL	100K0314	
LABELS ACCESSORIES	02T108	ACCESSORIES AND SERVICE PARTS	100K0314	

CRANKCASE



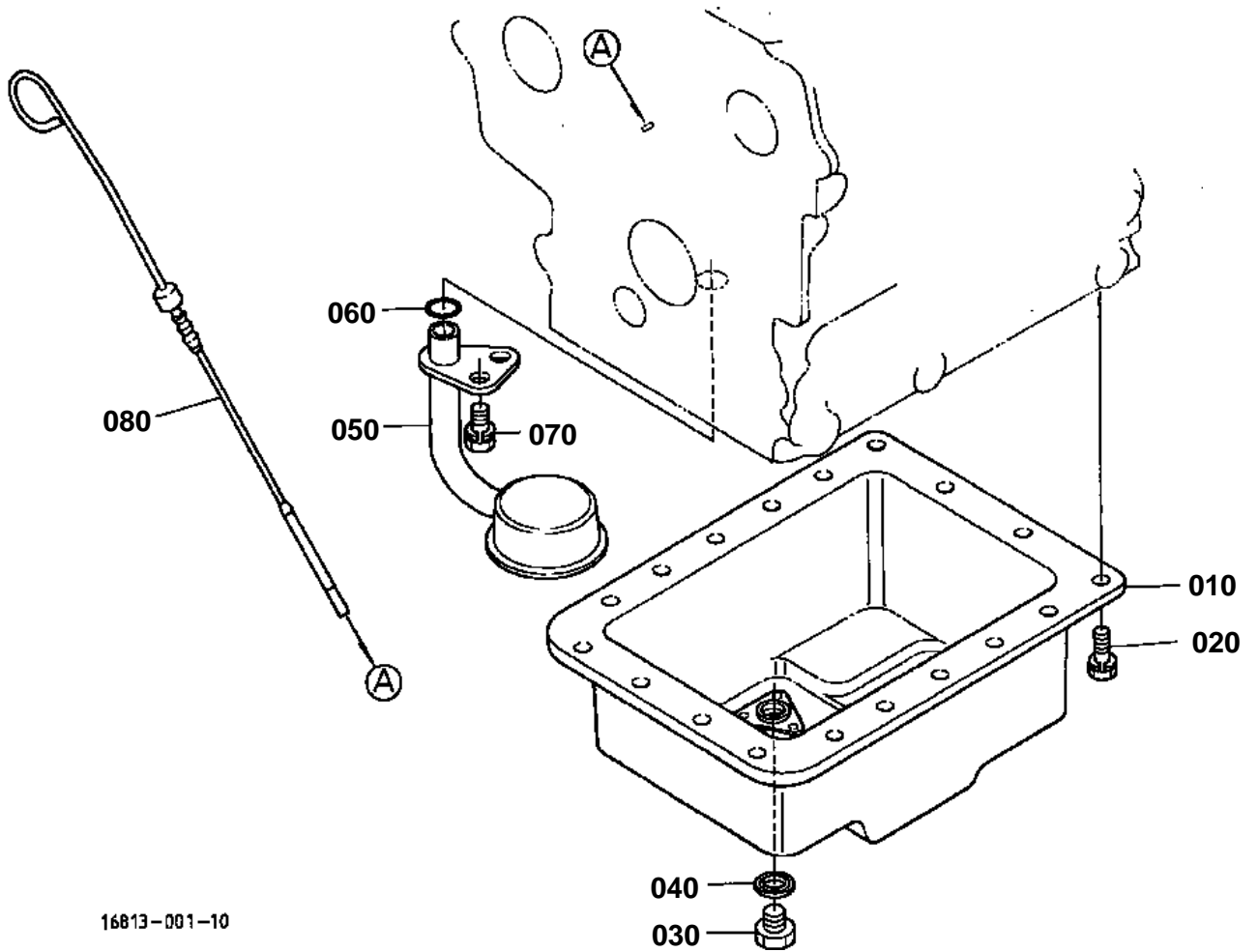


# CRANKCASE

↔ Interchangeable; ≠ not interchangeable; ← new for old; → old for new

REF.No	Part No.	Description	Q'ty	S.No.	I/C	REMARKS	Weight (kgf)	Weight (lb)
010	16813-01010	COMP.CRANKCASE	1				22	48.4
020	16851-96260	CAP SEALING	3				0.005	0.011
030	16851-96270	CAP SEALING	5				0.005	0.011
040	15451-96270	CAP SEALING	2				0.012	0.0264
050	15261-96010	PLUG	5				0.002	0.0044
060	15521-96020	PLUG	3				0.003	0.0066
070	15521-96030	PLUG	1				0.007	0.0154
080	15261-96160	PLUG EXPANSION	1				0.02	0.044
090	05012-00508	PIN STRAIGHT	2				0.001	0.0022
100	05012-00820	PIN STRAIGHT	2				0.008	0.0176
110	15221-33650	PIN PIPE	1				0.004	0.0088
120	15231-33960	PIN PIPE	2				0.001	0.0022
140	15221-33700	O RING	1				0.001	0.0022
150	15841-73020	ASSY COCK DRAIN	1				0.03	0.066
160	16851-35010	ASSY PUMP OIL	1				0.24	0.528
170	16851-35152	GASKET	1				0.001	0.0022
180	15841-91050	BOLT	3				0.01	0.022
190	15841-35660	GEAR OIL PUMP DRIVE	1				0.113	0.2486
200	05712-00408	KEY FEATHER	1				0.001	0.0022
210	02783-50100	NUT FLANGE	1				0.01	0.022
220	15531-39010	SWITCH OIL	1				0.032	0.0704
230	17331-59190	PIN PIPE	2				0.02	0.044

OIL PAN





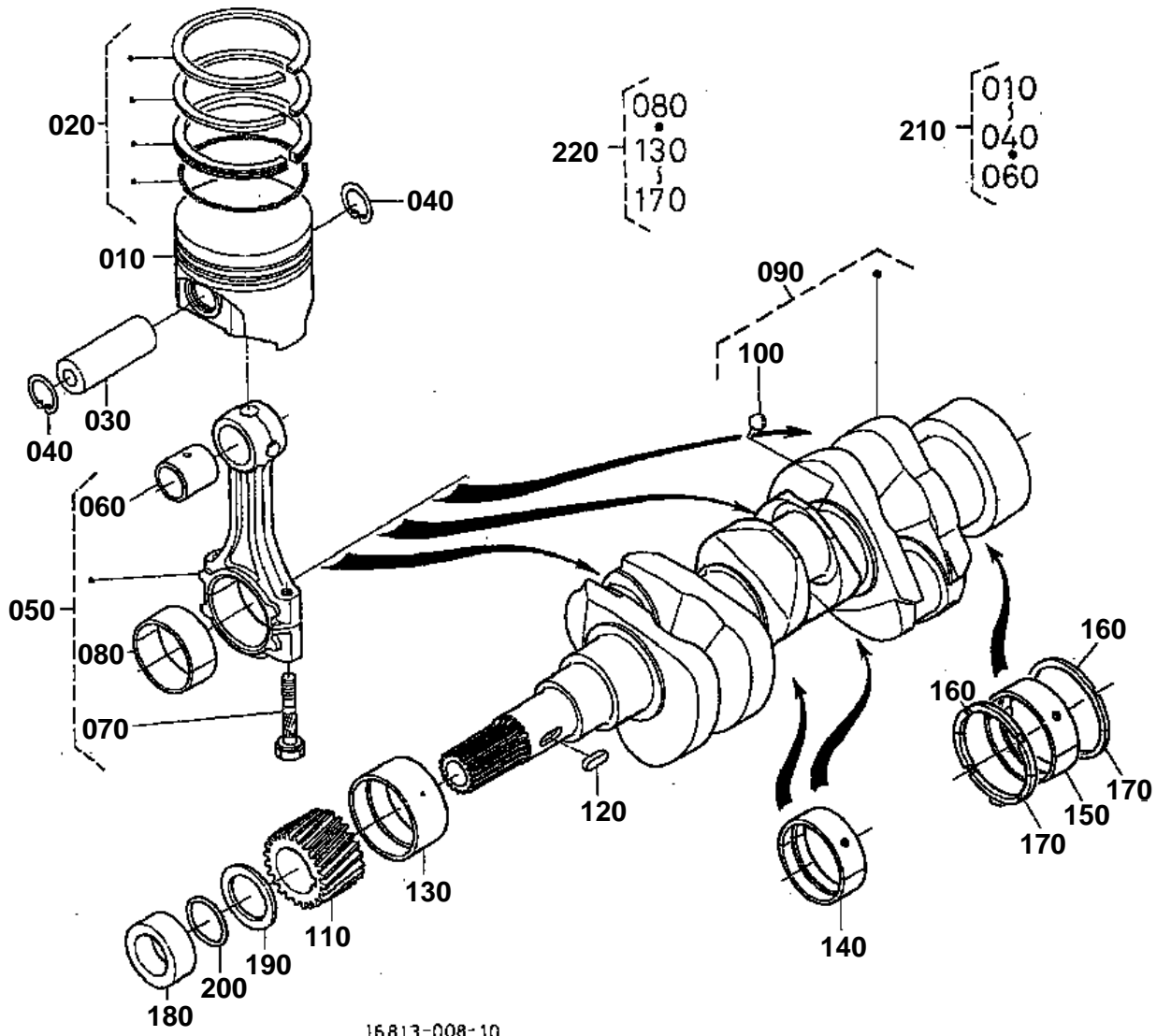
# OIL PAN

↔ Interchangeable; ≠ not interchangeable; ← new for old; → old for new

REF.No	Part No.	Description	Q'ty	S.No.	I/C	REMARKS	Weight (kgf)	Weight (lb)
010	6C090-58920	COMP.OIL PAN	1	<=WQ5250			0	0
010	6C090-58924	COMP.OIL PAN	1	>=WS0001	←		0.75	1.65
020	01023-50612	BOLT	18				0.005	0.011
030	15221-33750	PLUG	1				0.032	0.0704
040	6C090-58960	GASKET	1				0.002	0.0044
050	16813-32110	FILTER OIL	1				0.11	0.242
060	04811-00160	O RING	1	<=WG4000			0.001	0.0022
060	04814-00160	RING	1	>=WJ0001	←		0.001	0.0022
070	01123-60814	BOLT	1				0.008	0.0176
080	16853-36410	GAUGE OIL	1				0.045	0.099



PISTON/CRANKSHAFT



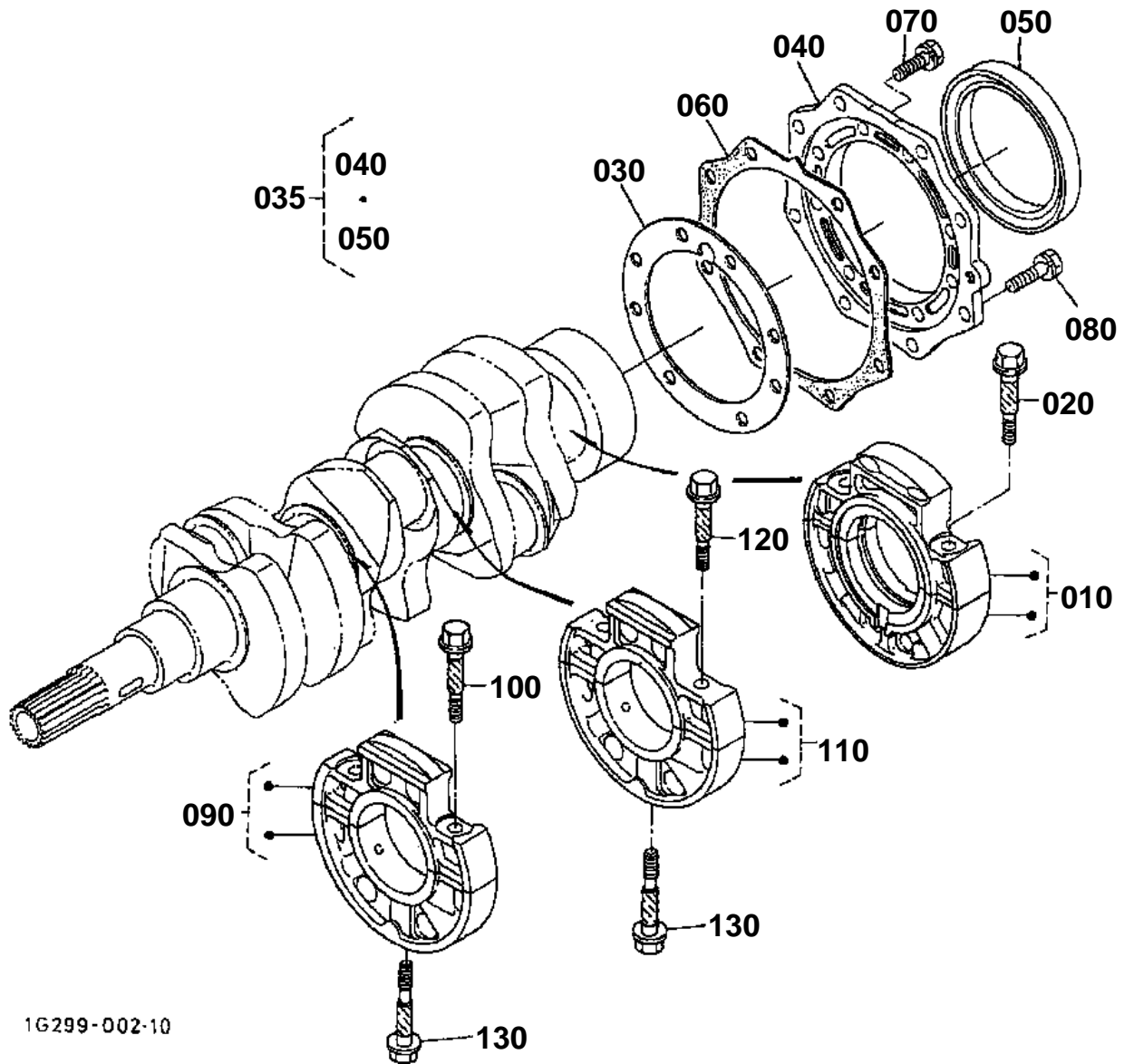


# PISTON/CRANKSHAFT

↔ Interchangeable; ≠ not interchangeable; ← new for old; → old for new

REF.No	Part No.	Description	Q'ty	S.No.	I/C	REMARKS	Weight (kgf)	Weight (lb)
010	16851-21112	PISTON	3			STD	0.23	0.506
010	16851-21900	PISTON	3			+0.25mm	0.26	0.572
020	16853-21050	ASSY PISTON RING	3			STD	0.04	0.088
020	16851-21093	ASSY PISTON RING	3			+0.25mm	0.03	0.066
030	16851-21310	PIN PISTON	3				0.1	0.22
040	15261-21330	CIRCLIP PISTON PIN	6				0.001	0.0022
050	16851-22010	ASSY CONNECTING ROD	3				0.47	1.034
060	16851-21980	BUSH PISTON PIN	3				0.01	0.022
070	16851-22140	BOLT CONNECTING ROD	6				0.012	0.0264
080	16851-22320	METAL CRANKPIN M	3			STD SET	0.04	0.088
080	15861-22970	METAL CRANKPIN	3			-0.2mm SET	0.03	0.066
080	15861-22980	METAL CRANKPIN	3			-0.4mm SET	0.03	0.066
090	16861-23010	COMP.CRANKSHAFT	1				5.56	12.232
100	07715-03207	BALL	3				0.001	0.0022
110	16864-24110	GEAR CRANKSHAFT	1				0.08	0.176
120	05712-00515	KEY FEATHER	1				0.003	0.0066
130	15861-23470	METAL CRANKSHAFT	1			STD	0.03	0.066
130	15861-23910	METAL CRANKSHAFT	1			-0.2mm	0.04	0.088
130	15861-23920	METAL CRANKSHAFT	1			-0.4mm	0.04	0.088
140	16861-23490	METAL CRANKSHAFT M	2			STD SET	0.02	0.044
140	15861-23860	METAL CRANKSHAFT	2			-0.2mm SET	0.03	0.066
140	15861-23870	METAL CRANKSHAFT	2			-0.4mm SET	0.03	0.066
150	16861-23480	METAL CRANKSHAFT M	1			STD SET	0.03	0.066
150	15694-23930	METAL CRANKSHAFT	1			-0.2mm SET	0.05	0.11
150	15694-23940	METAL CRANKSHAFT	1			-0.4mm SET	0.046	0.1012
160	15261-23530	METAL SIDE	2			STD	0.006	0.0132
160	15261-23950	METAL SIDE	2			+0.2mm	0.006	0.0132
160	15261-23960	METAL SIDE	2			+0.4mm	0.007	0.0154
170	15261-23540	METAL SIDE	2			STD	0.007	0.0154
170	15261-23970	METAL SIDE	2			+0.2mm	0.006	0.0132
170	15261-23980	METAL SIDE	2			+0.4mm	0.007	0.0154
180	15841-23250	COLLAR CRANKSHAFT	1				0.05	0.11
190	15881-23310	SLINGER OIL	1				0.004	0.0088
200	04811-16220	O RING	1	<=WG4000			0.001	0.0022
200	04814-16220	O RING	1	>=WJ0001	←		0.001	0.0022
210	07916-28460	KIT PISTON-RING	3			STD	0.38	0.836
210	07916-28470	KIT PISTON-RING	3			+0.25mm	0.1	0.22
220	07916-28210	KIT METAL ENGINE	1			STD	0.22	0.484
220	07916-28860	KIT METAL ENGINE	1			-0.2mm/+0.2mm	0.217	0.4774
220	07916-28870	KIT METAL ENGINE	1			-0.4mm/+0.4mm	0.217	0.4774

MAIN BEARING CASE



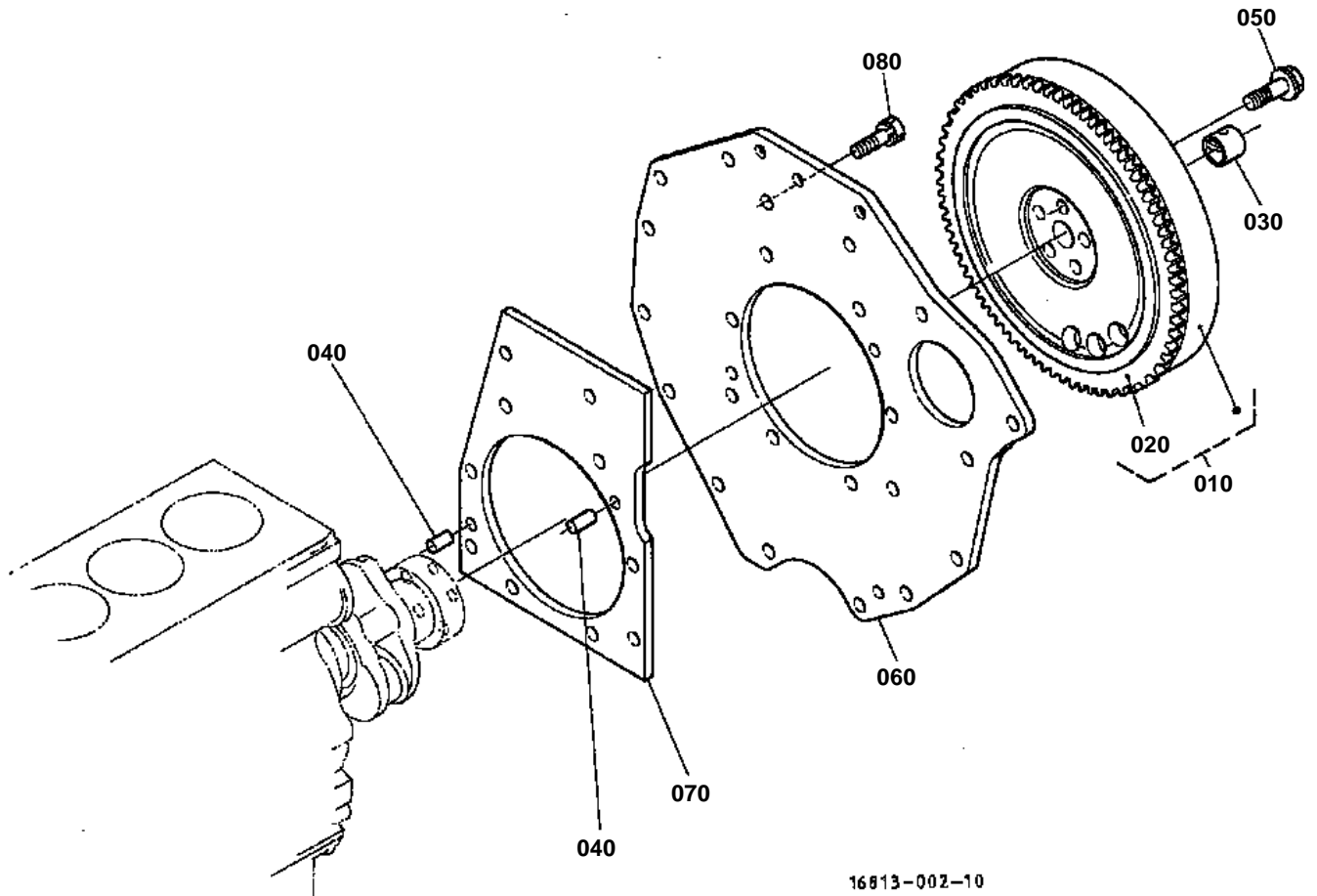


## MAIN BEARING CASE

↔ Interchangeable; ≠ not interchangeable; ← new for old; → old for new

REF.No	Part No.	Description	Q'ty	S.No.	I/C	REMARKS	Weight (kgf)	Weight (lb)
010	16851-04092	ASSY CASE MAIN BRG.	1				0.71	1.562
020	15841-04540	BOLT BEARING CASE	2				0.012	0.0264
030	15852-04360	GASKET BEARING CASE	1				0.005	0.011
035	15841-04800	ASSY COVER BRG.CASE	1				0.177	0.3894
040	15841-04810	COVER BEARING CASE	1				0.16	0.352
050	09560-00007	SEAL OIL	1				0.029	0.0638
060	15841-04822	GASKET	1				0.004	0.0088
070	01023-50620	BOLT	8				0.006	0.0132
080	01023-50622	BOLT	8				0.005	0.011
090	16851-04040	ASSY CASE MAIN BRG.	1				0.58	1.276
100	15841-04540	BOLT BEARING CASE	2				0.012	0.0264
110	16861-04050	ASSY CASE MAIN BRG.	1				0.58	1.276
120	15841-04540	BOLT BEARING CASE	2				0.012	0.0264
130	15841-04562	BOLT BEARING CASE	2				0.02	0.044

FLYWHEEL



16813-002-10

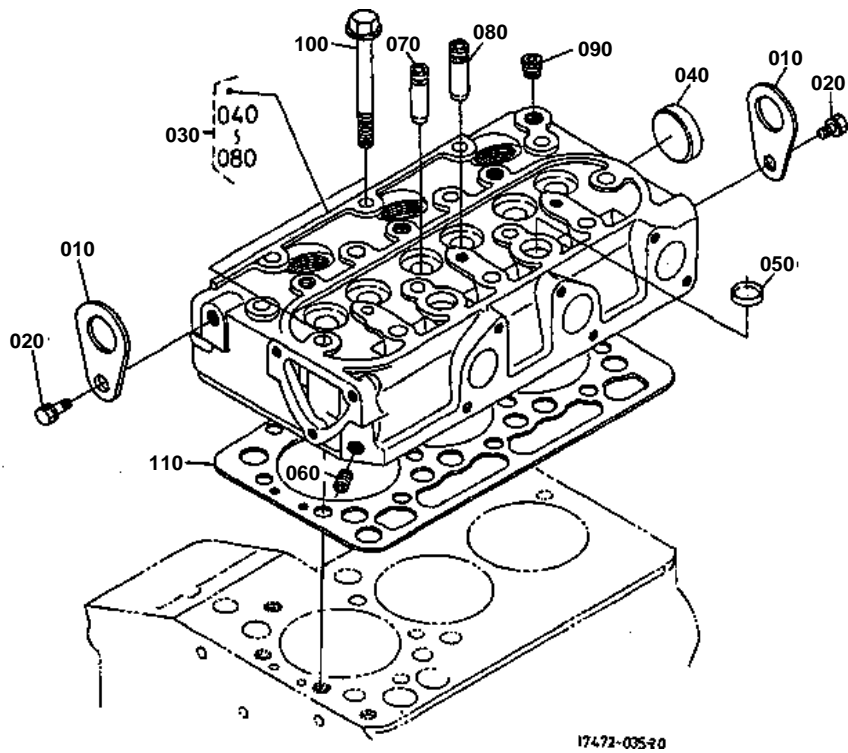


# FLYWHEEL

↔ Interchangeable; ≠ not interchangeable; ← new for old; → old for new

REF.No	Part No.	Description	Q'ty	S.No.	I/C	REMARKS	Weight (kgf)	Weight (lb)
010	16813-25010	COMP.FLYWHEEL	1				11.5	25.3
020	15262-63820	GEAR RING	1	≤801762			0.65	1.43
020	16813-63820	GEAR RING	1	≥801763	←		0.62	1.364
030	66621-14120	BEARING DRY	1				0.006	0.0132
040	05012-00816	PIN STRAIGHT	2				0.007	0.0154
050	15533-25162	BOLT FLYWHEEL	5				0.03	0.066
060	6C090-58910	PLATE END	1				4	8.8
070	6C090-58940	PLATE REAR END	1				1	2.2
080	01123-50825	BOLT	10				0.013	0.0286

CYLINDER HEAD





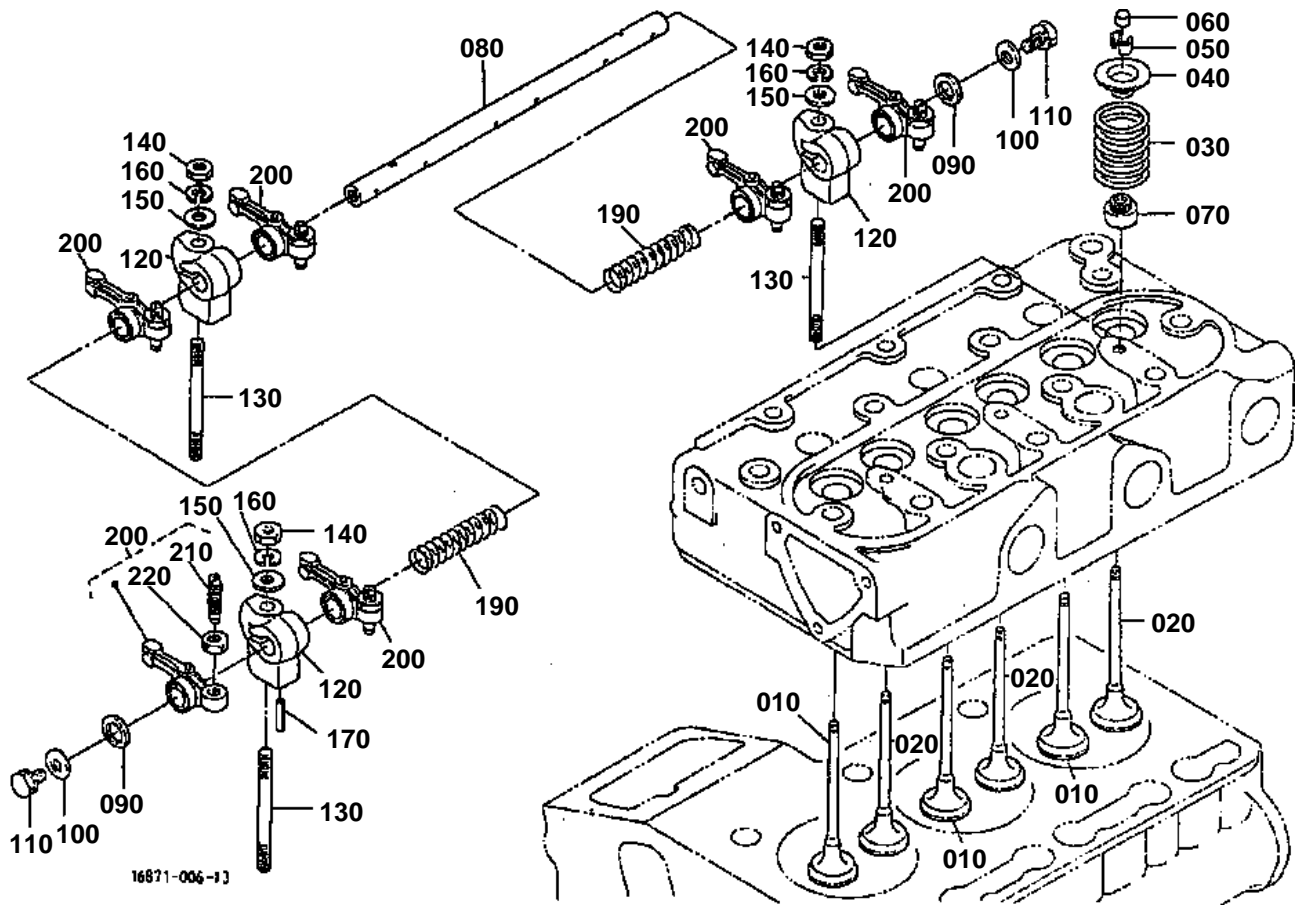
## CYLINDER HEAD

↔ Interchangeable; ≠ not interchangeable; ← new for old; → old for new

REF.No	Part No.	Description	Q'ty	S.No.	I/C	REMARKS	Weight (kgf)	Weight (lb)
010	15841-01750	HOOK ENGINE	2	<=825650			0	0
010	15221-01750	HOOK ENGINE	2	>=825651	↔		0.04	0.088
020	01123-60814	BOLT	2	<=825650			0.008	0.0176
020	01123-60816	BOLT	2	>=825651	↔		0.01	0.022
030	17575-03042	COMP.CYLINDER HEAD	1				7.3	16.06
040	15321-96260	CAP SEALING	1				0.014	0.0308
050	15261-03370	CAP SEALING	2				0.005	0.011
060	15261-96010	PLUG	1				0.002	0.0044
070	15841-13540	GUIDE INLET VALVE	3				0.014	0.0308
080	15841-13560	GUIDE EXHAUST VALVE	3				0.014	0.0308
090	15841-96020	PLUG	1				0.003	0.0066
100	14601-03450	BOLT CYLINDER HEAD	14				0.035	0.077
110	16871-03310	GASKET CYLINDER HEAD	1				0.083	0.1826



VALVE AND ROCKER ARM



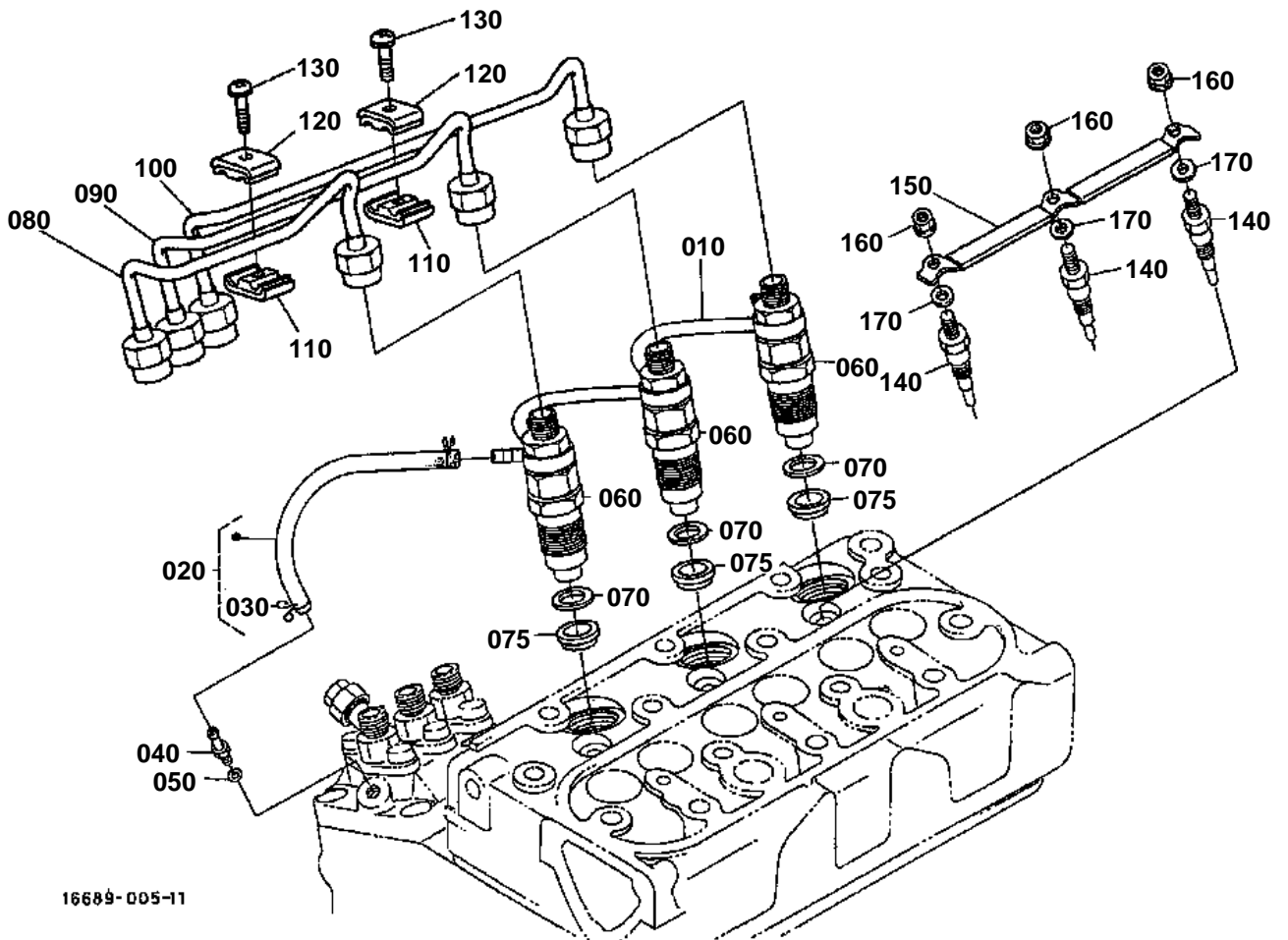


## VALVE AND ROCKER ARM

↔ Interchangeable; ≠ not interchangeable; ← new for old; → old for new

REF.No	Part No.	Description	Q'ty	S.No.	I/C	REMARKS	Weight (kgf)	Weight (lb)
010	14601-13110	VALVE INLET	3				0.03	0.066
020	14601-13120	VALVE EXHAUST	3				0.028	0.0616
030	14601-13240	SPRING VALVE	6				0.015	0.033
040	14601-13330	RETAINER SPRING	6				0.01	0.022
050	14601-13360	COLLET VALVE SPRING	6			SET	0.001	0.0022
060	16851-13280	CAP VALVE	6				0.005	0.011
070	15841-13150	SEAL VALVE STEM	6				0.015	0.033
080	15861-14263	SHAFT ROCKER ARM	1				0.094	0.2068
090	16871-14430	WASHER	2				0.002	0.0044
100	15841-94022	WASHER PLAIN	2				0.005	0.011
110	01023-50610	BOLT	2				0.005	0.011
120	15841-14350	BRACKET ROCKER ARM	3				0.026	0.0572
130	14601-14410	STUD	3				0.015	0.033
140	02056-50060	NUT	3				0.002	0.0044
150	04012-50060	WASHER PLAIN	3				0.001	0.0022
160	04512-60060	WASHER SPRING	3				0.001	0.0022
170	05411-00420	PIN SPRING	1				0.001	0.0022
190	14601-14310	SPRING ROCKER ARM	2				0.005	0.011
200	15841-14030	ASSY ROCKER ARM	6				0.04	0.088
210	15841-14230	SCREW ADJUSTING	6				0.003	0.0066
220	14601-14240	NUT	6				0.007	0.0154

NOZZLE HOLDER AND GLOW PLUG



16689-005-11

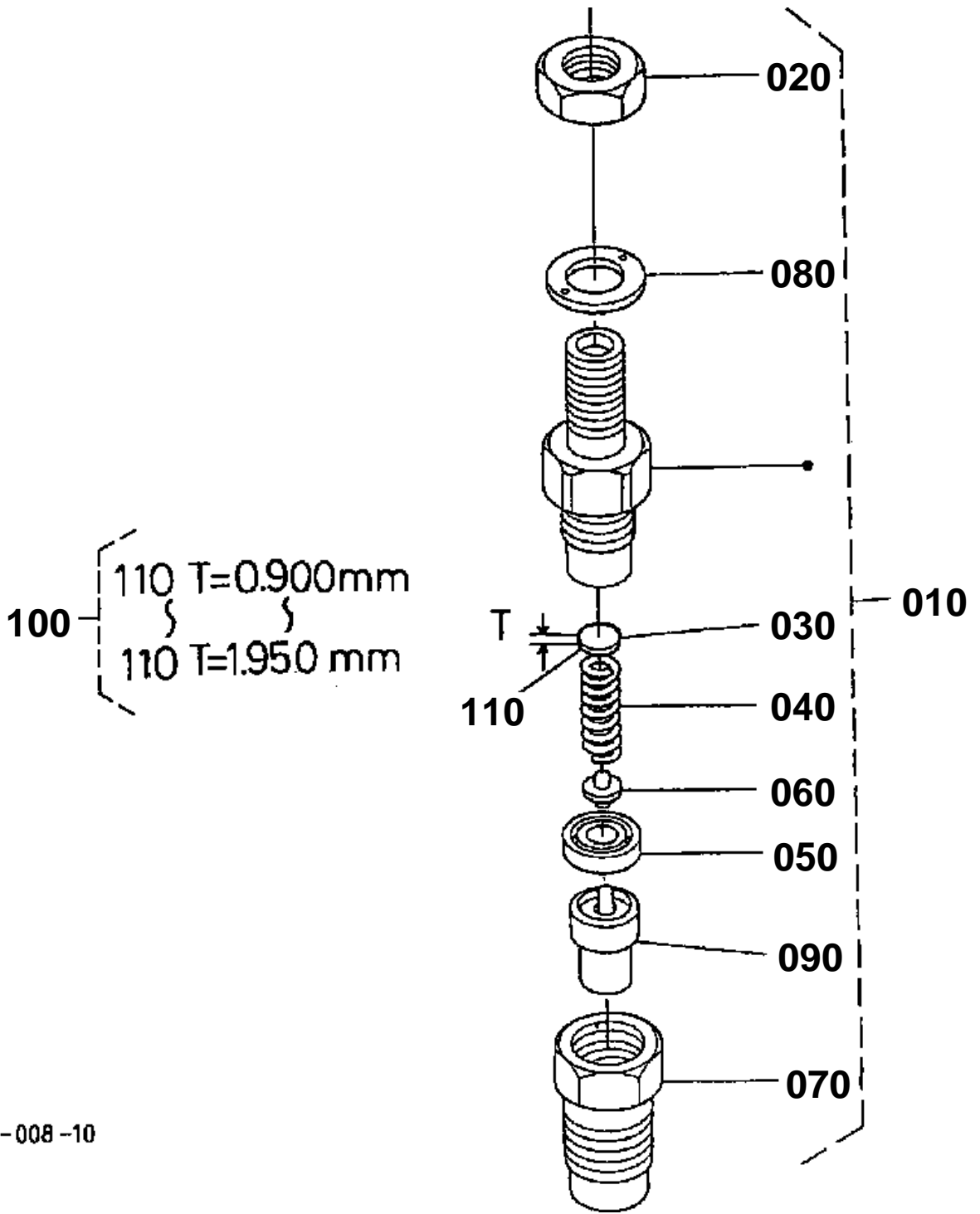


## NOZZLE HOLDER AND GLOW PLUG

↔ Interchangeable; ≠ not interchangeable; ← new for old; → old for new

REF.No	Part No.	Description	Q'ty	S.No.	I/C	REMARKS	Weight (kgf)	Weight (lb)
010	15862-42502	ASSY PIPE OVER FLOW	1				0.042	0.0924
020	15841-42500	ASSY PIPE OVER FLOW	1				0.015	0.033
030	14971-42750	CLIP PIPE	2				0.001	0.0022
040	15841-51360	SCREW AIR BREEDER	1				0.008	0.0176
050	15601-96650	GASKET	1				0.001	0.0022
060	16001-53000	ASSY HOLDER NOZZLE	3			REFER TO L.NO.0B05-R0 FOR COMPONENTS.	0.13	0.286
070	15841-53622	GASKET	3				0.002	0.0044
075	19077-53650	SEAL HEAT	3				0.005	0.011
080	16851-53712	PIPE INJECTION	1				0.1	0.22
090	16851-53722	PIPE INJECTION	1				0.1	0.22
100	16861-53732	PIPE INJECTION	1				0.1	0.22
110	15841-53850	CLAMP PIPE	2				0.01	0.022
120	15841-53860	CLAMP PIPE	2				0.009	0.0198
130	03024-50520	SCREW WITH WASHER	2				0.004	0.0088
140	16851-65510	GLOW PLUG	3				0.02	0.044
150	16861-65560	CORD GLOW PLUG	1				0.02	0.044
160	02761-50040	NUT FLANGE	3				0.002	0.0044
170	04013-60040	WASHER PLAIN	3				0.002	0.0044

NOZZLE HOLDER [COMPONENT PARTS]



16871-008-10

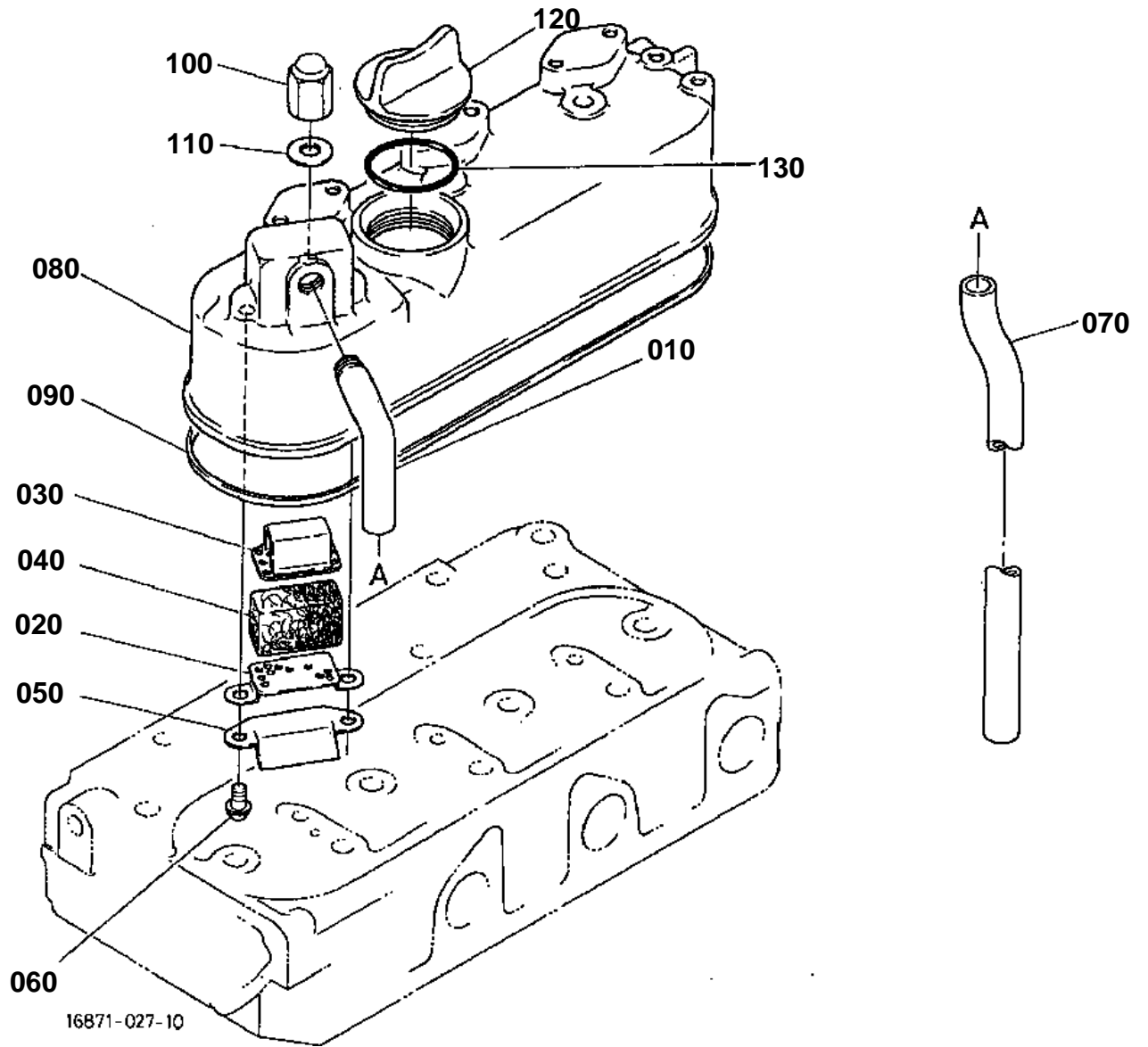


**NOZZLE HOLDER [COMPONENT PARTS]**

↔ Interchangeable; ≠ not interchangeable; ← new for old; → old for new

REF.No	Part No.	Description	Q'ty	S.No.	I/C	REMARKS	Weight (kgf)	Weight (lb)
010	16001-53000	ASSY HOLDER NOZZLE	3				0.13	0.286
020	15841-92030	NUT	3				0.005	0.011
030	15841-53230	WASHER ADJUSTING	3				0.001	0.0022
040	15841-53170	SPRING NOZZLE	3				0.004	0.0088
050	15841-53350	PIECE DISTANCE	3				0.004	0.0088
060	15841-53160	PUSH ROD	3				0.001	0.0022
070	16475-53280	NUT NOZZLE	3				0.03	0.066
080	15841-94040	WASHER	3				0.001	0.0022
090	16851-53610	PIECE NOZZLE	3				0.03	0.066
100	15841-98100	ASSY WASHER ADJUST	3			OPTION	0.043	0.0946
110	15841-53230	WASHER ADJUSTING	3			0.900MM	0.001	0.0022
110	15841-98510	WASHER ADJUSTING	3			0.925MM	0.001	0.0022
110	15841-98520	WASHER ADJUSTING	3			0.950MM	0.001	0.0022
110	15841-98530	WASHER ADJUSTING	3			0.975MM	0.001	0.0022
110	15841-98540	WASHER ADJUSTING	3			1.000MM	0.001	0.0022
110	15841-98550	WASHER ADJUSTING	3			1.025MM	0.001	0.0022
110	15841-98560	WASHER ADJUSTING	3			1.050MM	0.001	0.0022
110	15841-98570	WASHER ADJUSTING	3			1.075MM	0.001	0.0022
110	15841-98580	WASHER ADJUSTING	3			1.100MM	0.001	0.0022
110	15841-98590	WASHER ADJUSTING	3			1.125MM	0.001	0.0022
110	15841-98600	WASHER ADJUSTING	3			1.150MM	0.001	0.0022
110	15841-98610	WASHER ADJUSTING	3			1.175MM	0.001	0.0022
110	15841-98620	WASHER ADJUSTING	3			1.200MM	0.001	0.0022
110	15841-98630	WASHER ADJUSTING	3			1.225MM	0.001	0.0022
110	15841-98640	WASHER ADJUSTING	3			1.250MM	0.001	0.0022
110	15841-98650	WASHER ADJUSTING	3			1.275MM	0.001	0.0022
110	15841-98660	WASHER ADJUSTING	3			1.300MM	0.001	0.0022
110	15841-98670	WASHER ADJUSTING	3			1.325MM	0.001	0.0022
110	15841-98680	WASHER ADJUSTING	3			1.350MM	0.001	0.0022
110	15841-98690	WASHER ADJUSTING	3			1.375MM	0.001	0.0022
110	15841-98700	WASHER ADJUSTING	3			1.400MM	0.001	0.0022
110	15841-98710	WASHER ADJUSTING	3			1.425MM	0.001	0.0022
110	15841-98720	WASHER ADJUSTING	3			1.450MM	0.001	0.0022
110	15841-98730	WASHER ADJUSTING	3			1.475MM	0.001	0.0022
110	15841-98740	WASHER ADJUSTING	3			1.500MM	0.001	0.0022
110	15841-98750	WASHER ADJUSTING	3			1.525MM	0.001	0.0022
110	15841-98760	WASHER ADJUSTING	3			1.550MM	0.001	0.0022
110	15841-98770	WASHER ADJUSTING	3			1.575MM	0.001	0.0022
110	15841-98780	WASHER ADJUSTING	3			1.600MM	0.002	0.0044
110	15841-98790	WASHER ADJUSTING	3			1.625MM	0.001	0.0022
110	15841-98800	WASHER ADJUSTING	3			1.650MM	0.001	0.0022
110	15841-98810	WASHER ADJUSTING	3			1.675MM	0.004	0.0088
110	15841-98820	WASHER ADJUSTING	3			1.700MM	0.001	0.0022
110	15841-98830	WASHER ADJUSTING	3			1.725MM	0.001	0.0022
110	15841-98840	WASHER ADJUSTING	3			1.750MM	0.001	0.0022
110	15841-98850	WASHER ADJUSTING	3			1.775MM	0.001	0.0022
110	15841-98860	WASHER ADJUSTING	3			1.800MM	0.001	0.0022
110	15841-98870	WASHER ADJUSTING	3			1.825MM	0.001	0.0022
110	15841-98880	WASHER ADJUSTING	3			1.850MM	0.001	0.0022
110	15841-98890	WASHER ADJUSTING	3			1.875MM	0.001	0.0022
110	15841-98900	WASHER ADJUSTING	3			1.900MM	0.001	0.0022
110	15841-98910	WASHER ADJUSTING	3			1.925MM	0.001	0.0022
110	15841-98920	WASHER ADJUSTING	3			1.950MM	0.001	0.0022

HEAD COVER





**Download the full PDF manual instantly.**

**Our customer service e-mail:**

**[aservicemanualpdf@yahoo.com](mailto:aservicemanualpdf@yahoo.com)**