

**WS23S-1 S/N 1005-UP**  
**WS23S-1 S/N 1005-UP**

Item	Part Name
	KT-1150-1A S/N 101153-UP
10	ENGINE RELATED PARTS AND ELECTRICAL SYSTEM
20	TORQUE CONVERTOR AND TRANSMISSION
30	DRIVE SHAFT?DEFFERENTIAL AND WHEELS
40	STEERING AND CONTROL SYSTEMS
50	FRAME AND BODY
60	SCRAPER AND HYDRAULIC SYSTEM
70	AIR SYSTEM
80	OPTIONAL PARTS
90	TOOL AND KIT

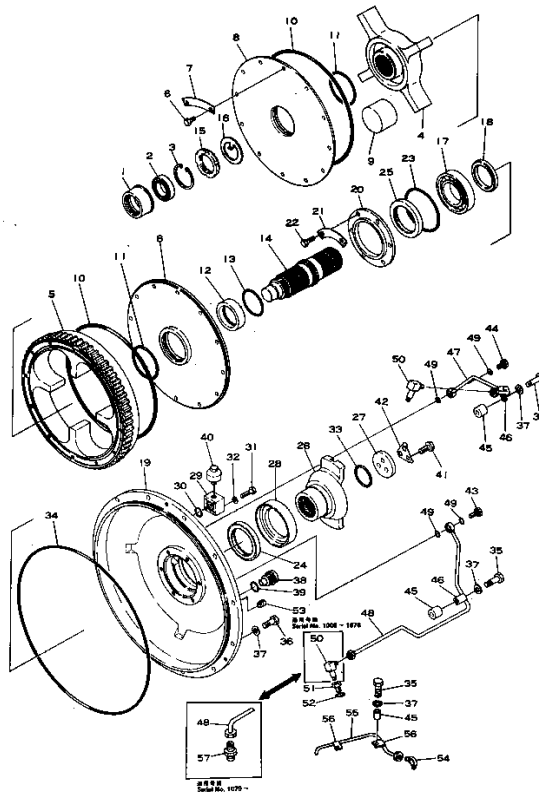
**WS23S-1 S/N 1005-UP**  
**ENGINE RELATED PARTS AND ELECTRICAL SYSTEM**

Item	Part Name	Qty
10	OUTPUT SHAFT(#1005-1239)	1
20	OUTPUT SHAFT(#1240-)	1
30	BYPASS FILTER PIPING(#1005-1239)	1
40	BYPASS FILTER PIPING(#1240-)	1
50	ENGINE?TORQUE CONVERTER AND TRANSMISSION MOUNTING(#1005-1239)	1
60	ENGINE?TORQUE CONVERTER AND TRANSMISSION MOUNTING(#1240-)	1
70	AIR CLEANER AND PIPING(#1005-1239)	1
80	AIR CLEANER AND PIPING(#1240-)	1
90	AIR CLEANER	1
100	ENGINE CONTROL LINKAGE(#1005-1239)	1
110	ENGINE CONTROL LINKAGE(#1240-)	1
120	COOLING SYSTEM(#1005-1239)	1
130	COOLING SYSTEM (1/3)(#1240-)	1
140	COOLING SYSTEM (2/3)(#1240-)	1
150	COOLING SYSTEM (3/3)(#1240-)	1
160	RADIATOR(#1005-1239)	1
170	RADIATOR(#1240-)	1
180	RADIATOR MOUNTING(#1240-)	1
190	FUEL TANK AND PIPING(#1005-1239)	1
200	FUEL TANK AND PIPING(#1240-)	1
210	ELECTRICAL SYSTEM (FRONT)(#1005-1239)	1
220	ELECTRICAL SYSTEM (FRONT) (1/2)(#1240-)	1
230	ELECTRICAL SYSTEM (FRONT) (2/2)(#1240-)	1
240	ELECTRICAL SYSTEM (REAR)(#1005-1239)	1
250	ELECTRICAL SYSTEM (REAR) (1/2)(#1240-)	1
260	ELECTRICAL SYSTEM (REAR) (2/2)(#1240-)	1
270	INSTRUMENT PANEL (1/2)(#1005-1239)	1
280	INSTRUMENT PANEL (2/2)(#1005-1239)	1
290	INSTRUMENT PANEL (1/2)(#1240-)	1
300	INSTRUMENT PANEL (2/2)(#1240-)	1
310	BATTERY AND RELAY SWITCH(#1005-1239)	1
320	BATTERY AND RELAY SWITCH(#1240-)	1
330	QUICK START(#1005-1239)	1
340	QUICK START(#1240-)	1

WS23S-1 S/N 1005-UP

@@Q71958

Fig. 101 アウトプットシャフト (適用機種) (Serial No. 1005-1239)



Ref. 101

Page 030010

WS23S-1 S/N 1005-UP  
OUTPUT SHAFT(#1005-1239)

Item	Part No.	Part Name	Qty	Serial No.
	287-01-12001	OUTPUT SHAFT ASS'Y	1	1005-1239
1	287-01-12250	・ BUSHING	1	1005-1239
2	06004-06008	・ BEARING	1	1005-1239
3	04065-06825	・ RING	1	1005-1239
	566-01-00220	・ BODY ASS'Y	1	1005-1239
4	☆	・ ・ BODY	1	1005-1239
5	☆	・ ・ BODY	1	1005-1239
6	01010-31025	・ BOLT	24	1005-1239
7	566-01-12290	・ PLATE (KIT)	12	1005-1239
8	566-01-12171	・ FLANGE	2	1005-1239
9	287-01-12180	・ CUSHION	8	1005-@
10	07000-05330	・ O-RING (KIT)	2	1005-1239
11	07000-05090	・ O-RING (KIT)	2	1005-1239
12	287-01-12223	・ SPACER	1	1103-1239
	□287-01-12222	・ SPACER	1	1005-1102
13	287-01-12230	・ O-RING (KIT)	1	1005-1239
14	566-01-12211	・ SHAFT	1	1005-1239
15	01530-05814	・ NUT	1	1005-1239
16	01658-05823	・ WASHER	1	1005-1239
17	06000-06213	・ BEARING	1	1005-@
18	287-01-12430	・ SPACER	1	1005-1239
19	287-01-12311	・ COVER	1	1005-1239
20	287-01-12332	・ FLANGE	1	1005-1239
21	287-01-12340	・ PLATE (KIT)	3	1005-1239
22	01010-31020	・ BOLT	6	1005-1239
23	07000-22125	・ O-RING (KIT)	1	1005-1239
24	566-01-12721	・ SEAL	1	1005-1239
	(☒566-01-12720)	・ SEAL (KIT)	1	(1005-1126)
25	566-13-13310	・ SEAL (KIT)	1	1005-1239

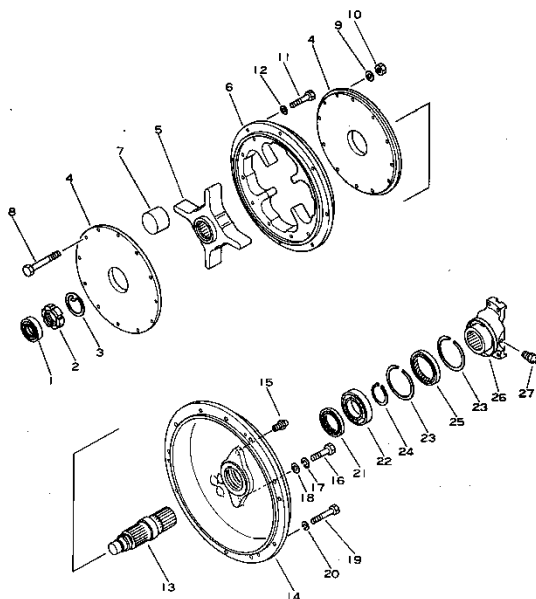
**WS23S-1 S/N 1005-UP  
OUTPUT SHAFT(#1005-1239)**

Item	Part No.	Part Name	Qty	Serial No.
26	566-13-11871	· COUPLING	1	1005-1239
27	287-01-12380	· HOLDER	1	1005-1239
28	566-01-12341	· PROTECTOR	1	1005-1239
29	281-01-16410	· BLOCK	1	1005-1239
30	07000-02021	O-RING	1	1005-1239
31	01010-30640	BOLT	4	1005-1239
32	01602-00619	WASHER	4	1005-1239
33	07000-05055	O-RING (KIT)	1	1005-1239
34	07000-05500	O-RING (KIT)	1	1005-1239
35	02010-20764	BOLT	3	1005-1239
36	02010-20738	BOLT	9	1005-1239
37	01602-01134	WASHER	12	1005-1239
38	287-01-12960	PLUG	1	1005-1239
39	07002-03034	O-RING (KIT)	1	1005-1239
40	07030-00252	BREATHER	1	1005-1239
41	01010-61230	BOLT	3	1005-1239
42	567-22-11170	LOCK (KIT)	1	1005-1239
43	6631-51-9580	BOLT	1	1005-1239
44	6631-51-9590	BOLT	1	1005-1239
45	566-01-12350	SPACER	3	1005-1239
46	08036-10814	CLIP	2	1005-1239
47	287-01-12521	TUBE	1	1005-1239
48	287-01-12533	TUBE	1	1079-1239
	287-01-12532	TUBE	1	1005-1078
49	07000-02012	O-RING (KIT)	4	1005-1239
50	287-01-12510	ELBOW	1	1079-1239
	287-01-12510	ELBOW	2	1005-1078
51	287-01-12550	NIPPLE	1	1005-1239
52	07000-22018	O-RING	1	1005-1239
53	07049-01418	PLUG	2	1005-1239
54	566-35-12260	ELBOW	1	1005-1239
55	287-01-12970	TUBE	1	1005-1239
56	08036-10614	CLIP	2	1005-1239
57	281-35-13160	NIPPLE	1	1079-1239

WS23S-1 S/N 1005-UP

@@Q71959

Fig. 101A アウトプット シャフト (適用機種 (Serial No. 1240~))  
OUTPUT SHAFT (Serial No. 1240~)



Ref. 101A

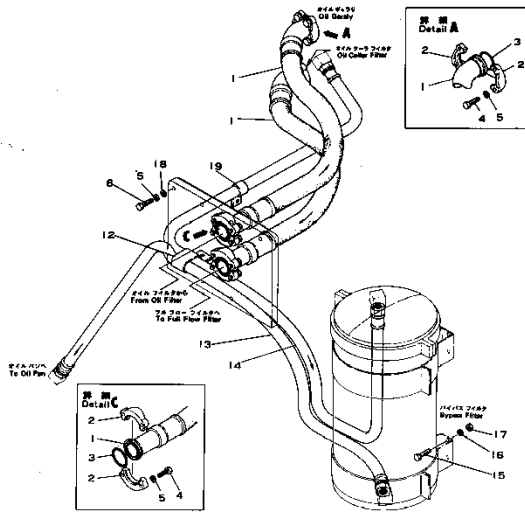
Page 030020

WS23S-1 S/N 1005-UP  
OUTPUT SHAFT(#1240-)

Item	Part No.	Part Name	Qty	Serial No.
	566-01-22001	OUTPUT SHAFT ASS'Y	1	1240-
1	06004-06208	· BEARING	1	1240-
2	287-01-12910	· NUT	1	1240-
3	287-01-12920	· WASHER (KIT)	1	1240-
4	566-01-22160	· FLANGE	2	1240-
5	566-01-12152	· BODY	1	1240-
6	566-01-12142	· BODY	1	1240-
7	287-01-12180	· CUSHION	8	1005-
8	01010-31090	· BOLT	12	1240-
9	01643-31032	· WASHER	24	1240-
10	01580-11008	· NUT	12	1240-
11	02010-60832	· BOLT	8	1240-
12	01643-31445	· WASHER	8	1240-
13	566-01-12213	· SHAFT	1	1240-
14	566-01-12113	· COVER	1	1240-
15	07029-00000	· VALVE	1	1240-
16	01010-31030	· BOLT	1	1240-
17	01602-01030	· WASHER	1	1240-
18	01643-31032	· WASHER	1	1240-
19	02010-70738	· BOLT	11	1240-
20	01602-01134	· WASHER	11	1240-
21	566-01-22920	· SEAL (KIT)	1	1240-
22	06000-06213	· BEARING	1	1005-
23	04071-00120	· RING	2	1240-
24	04064-06525	· RING	1	1240-
25	566-01-22910	· SEAL (KIT)	1	1240-
26	566-01-12711	· COUPLING	1	1240-
27	07020-00000	· FITTING	1	1240-

WS23S-1 S/N 1005-UP  
 @@Q71960

バイパス フィルタ パイピング (適用機種)  
 Fig. 102 BYPASS FILTER PIPING (Serial No. 1005~1239)



Ref. 102

Page 030030

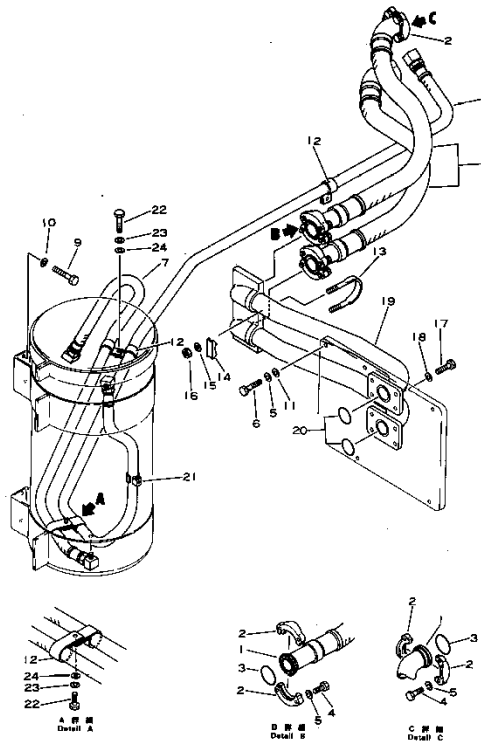
WS23S-1 S/N 1005-UP  
 BYPASS FILTER PIPING(#1005-1239)

Item	Part No.	Part Name	Qty	Serial No.
1	07114-01210	HOSE	2	1005-1239
2	07371-01250	FLANGE	8	1005-@
3	07000-23038	O-RING	4	1005-@
4	07372-21035	BOLT	16	1005-@
5	01602-21030	WASHER	22	1005-@
6	01010-51040	BOLT	6	1005-@
12	391-62-19240	CLIP	1	1005-1239
13	02750-03180	HOSE	1	1005-1239
14	02750-03200	HOSE	1	1005-1239
15	01010-50820	BOLT	8	1005-1239
16	01602-20825	WASHER	8	1005-@
17	01580-10806	NUT	8	1005-1239
18	01642-21016	WASHER	6	1005-@
19	08036-01814	CLIP	1	1005-@

WS23S-1 S/N 1005-UP

@@Q71961

バイパス フィルタ ハイピンング (適用号機  
Fig. 102A BYPASS FILTER PIPING (Serial No. 1240~)



Ref. 102A

Page 030040

WS23S-1 S/N 1005-UP  
BYPASS FILTER PIPING(#1240-)

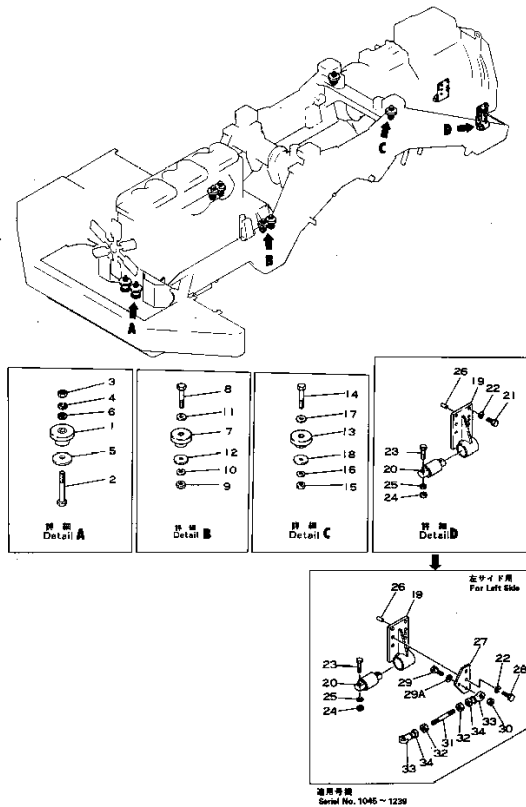
Item	Part No.	Part Name	Qty	Serial No.
1	07114-01209	HOSE	2	1240-
2	07371-01250	FLANGE	8	1240-
3	07000-23038	O-RING	4	1005-
4	07372-21035	BOLT	16	1005-
5	01602-21030	WASHER	22	1005-
6	01010-51040	BOLT	6	1005-
7	02750-03180	HOSE	1	1005-
8	02750-03220	HOSE	1	1005-
9	01010-50820	BOLT	8	1005-
10	01602-20825	WASHER	8	1005-
11	01642-21016	WASHER	6	1005-
12	08036-01814	CLIP	5	1005-
13	07283-23450	CLIP	2	1240-
14	07283-53444	SEAT	2	1240-
15	01643-31032	WASHER	4	1240-
16	01599-01010	NUT	4	1240-
17	01010-51035	BOLT	8	1240-
18	01602-21030	WASHER	8	1240-
19	287-01-13130	TUBE	1	1240-
20	07000-23042	O-RING	2	1240-
21	08035-02508	CLIP	1	1240-
22	01010-51020	BOLT	2	1240-
23	01602-21030	WASHER	2	1240-
24	01643-21032	WASHER	2	1240-

WS23S-1 S/N 1005-UP

@@Q71962

Fig. 103 エンジン トルク コンバータ および トランスミッション マウンティング  
ENGINE TORQUE CONVERTER AND TRANSMISSION MOUNTING

(適用号機  
Serial No. 1005~1239)



Ref. 103

Page 030050

WS23S-1 S/N 1005-UP  
ENGINE TORQUE CONVERTER AND TRANSMISSION  
MOUNTING(#1005-1239)

Item	Part No.	Part Name	Qty	Serial No.
1	287-01-18330	CUSHION	2	1005-@
2	02011-71678	BOLT	2	1005-1239
3	02205-11625	NUT	2	1005-1239
4	01602-22578	WASHER	2	1005-1239
5	287-01-18230	WASHER	2	1005-@
6	01643-32780	WASHER	2	1005-1239
7	287-01-18340	CUSHION	4	1005-@
8	02011-71221	BOLT	4	1005-1239
9	02205-11219	NUT	8	1005-1239
10	01602-21957	WASHER	4	1005-1239
11	01643-32060	WASHER	4	1005-1239
12	287-01-18220	WASHER	4	1005-1239
13	287-01-18340	CUSHION	2	1005-@
14	02011-71221	BOLT	2	1005-1239
15	02205-11219	NUT	2	1005-1239
16	01602-21957	WASHER	2	1005-1239
17	01643-32060	WASHER	2	1005-1239
18	287-01-18220	WASHER	2	1005-1239
19	287-16-14121	BRACKET	2	1005-@
20	566-14-51152	CUSHION	2	1067-@
	□566-14-51151	CUSHION	2	1005-1066
21	01010-51645	BOLT	9	1045-@
	01010-51645	BOLT	12	1005-1044
22	01602-21648	WASHER	12	1005-@
23	01010-51470	BOLT	4	1005-@
24	01580-11411	NUT	4	1005-1239
25	01602-21442	WASHER	4	1005-@
26	04020-01842	PIN	2	1005-@

Reference:103

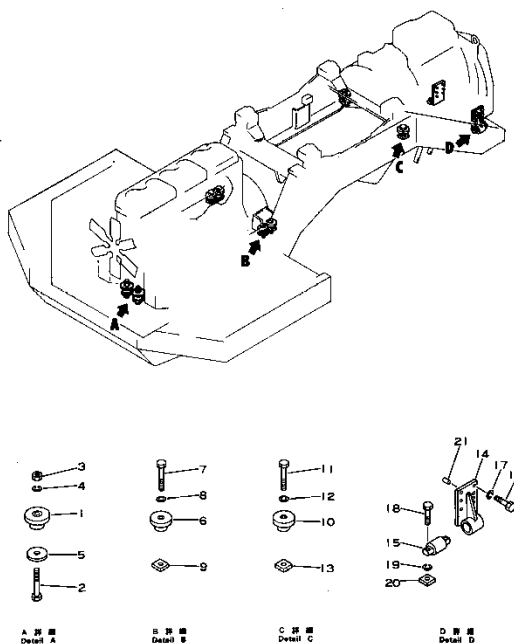
Page:030050



**WS23S-1 S/N 1005-UP**  
**ENGINE?TORQUE CONVERTER AND TRANSMISSION**  
**MOUNTING(#1005-1239)**

Item	Part No.	Part Name	Qty	Serial No.
27	287-01-18410	PLATE	1	1045-1239
28	01010-51665	BOLT	3	1045-1239
29	01090-52070	BOLT	1	1045-1239
29A	01643-32060	WASHER	1	1045-1239
30	01582-12016	NUT	1	1045-1239
31	287-46-13180	ROD	1	1045-1239
32	01582-12016	NUT	2	1045-1239
33	281-09-11670	COVER	2	1045-1239
34	281-09-11770	END	2	1045-1239

エンジン トルク コンバータ および トランスミッション マウンティング  
 Fig. 103A ENGINE TORQUE CONVERTOR AND TRANSMISSION MOUNTING  
 (適用号機  
 Serial No. 1240~)



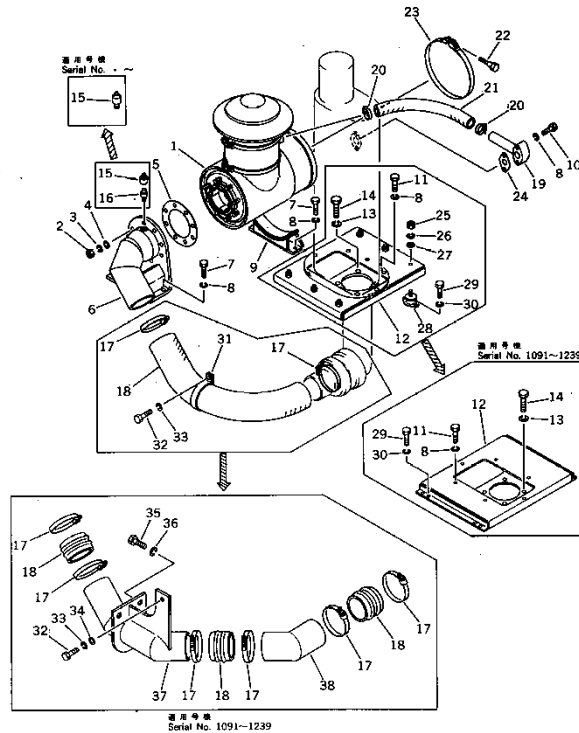
WS23S-1 S/N 1005-UP  
 ENGINE TORQUE CONVERTOR AND TRANSMISSION MOUNTING(#1240-)

Item	Part No.	Part Name	Qty	Serial No.
1	287-01-18330	CUSHION	2	1005-
2	01011-52450	BOLT	2	1240-
3	01580-12419	NUT	2	1240-
4	01643-32460	WASHER	2	1240-
5	287-01-18230	WASHER	2	1005-
6	287-01-18340	CUSHION	4	1005-
7	01011-51800	BOLT	4	1240-
8	01643-31845	WASHER	4	1240-
9	287-01-18370	SEAT	4	1240-
10	287-01-18340	CUSHION	2	1005-
11	01011-51800	BOLT	2	1240-
12	01643-31845	WASHER	2	1240-
13	287-01-18380	SEAT	2	1240-
14	287-16-14121	BRACKET	2	1005-
15	566-14-51152	CUSHION	2	1005-
16	01010-51645	BOLT	12	1045-
17	01602-21648	WASHER	12	1005-
18	01010-51470	BOLT	4	1005-
19	01602-21442	WASHER	4	1240-
20	566-14-51220	NUT	4	1240-
21	04020-01842	PIN	2	1005-

WS23S-1 S/N 1005-UP

@@Q71964

Fig. 104 エアークリーナ およびパイピング (適用号機 Serial No. 1005~1239)



Ref. 104

Page 030070

WS23S-1 S/N 1005-UP  
AIR CLEANER AND PIPING(#1005-1239)

Item	Part No.	Part Name	Qty	Serial No.
1	(6128-81-7103)	AIR CLEANER ASS'Y	1	1005-1239
2	01580-11008	NUT	8	1005-@
3	01602-21030	WASHER	8	1005-@
4	01640-21016	WASHER	8	1005-1239
5	6127-81-4820	GASKET	1	1005-@
6	287-02-13111	BRACKET	1	1005-1239
7	01010-51020	BOLT	6	1005-1239
8	01602-21030	WASHER	20	1005-1239
9	287-02-13121	BRACKET	1	1005-@
10	01010-51065	BOLT	2	1005-1239
11	01010-51030	BOLT	6	1005-1239
12	287-02-13314	BRACKET	1	1091-1239
	287-02-13313	BRACKET	1	1005-1090
13	01602-21236	WASHER	4	1005-1239
14	01010-51225	BOLT	4	1005-1239
15	6110-83-9610	INDICATOR	1	.-@
	08670-00635	INDICATOR	1	1005-.
16	6110-83-9620	ADAPTER	1	1005-.
17	07281-11589	CLAMP	6	1091-1239
	07281-01589	CLAMP	2	1005-1090
18	6685-11-4333	HOSE	3	1091-1239
	287-02-13412	HOSE	1	1066-1090
	□287-02-13411	HOSE	1	1005-1065
19	287-02-13211	TUBE	1	1005-1239
20	07281-10609	CLAMP	2	1005-@
21	287-02-13221	HOSE	1	1005-1239
22	6110-11-4641	BOLT	1	1005-1239
23	6127-11-4360	BAND ASS'Y	1	1005-1239
24	6128-11-5610	GASKET	1	1005-1239

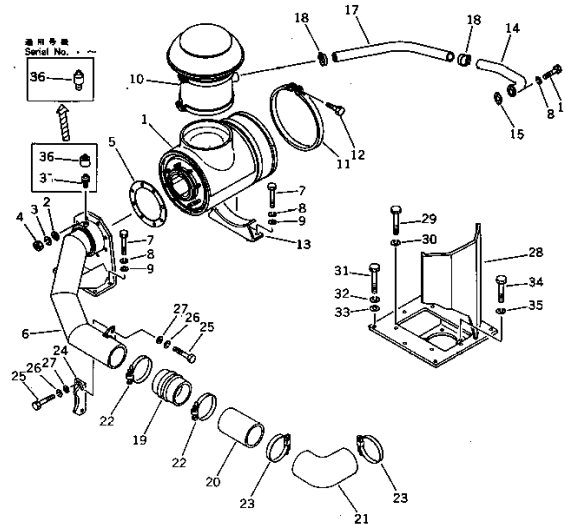
**WS23S-1 S/N 1005-UP**  
**AIR CLEANER AND PIPING(#1005-1239)**

Item	Part No.	Part Name	Qty	Serial No.
25	01580-11008	NUT	6	1005-1090
26	01602-21030	WASHER	6	1005-1090
27	01643-31032	WASHER	6	1005-1090
28	565-03-11270	CUSHION	6	1005-1090
29	01010-50820	BOLT	8	1091-1239
	01010-50820	BOLT	12	1005-1090
30	01602-20825	WASHER	8	1091-1239
	01602-20825	WASHER	12	1005-1090
31	287-02-13550	CLIP	1	1005-1090
32	01010-51025	BOLT	1	1005-1239
33	01602-21030	WASHER	1	1005-1239
34	01643-31032	WASHER	1	1091-1239
35	01010-51230	BOLT	2	1091-1239
36	01602-21236	WASHER	2	1091-1239
37	287-02-13140	TUBE	1	1091-1239
38	287-02-13150	TUBE	1	1091-1239

WS23S-1 S/N 1005-UP

@@Q71965

Fig. 104A エアークリーナ およびパイピング (適用機種 (Serial No. 1240-))



Ref. 104A

Page 030080

WS23S-1 S/N 1005-UP  
AIR CLEANER AND PIPING(#1240-)

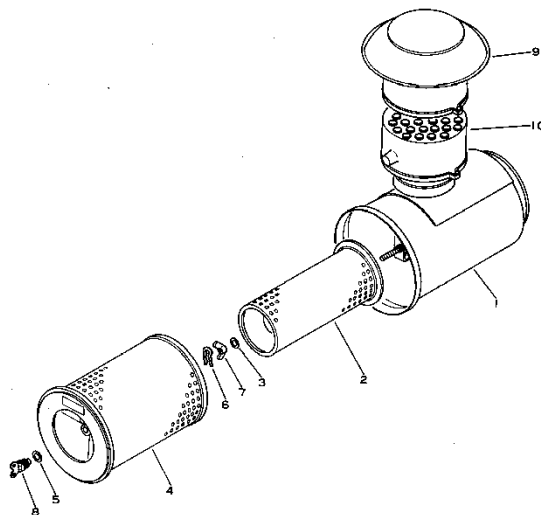
Item	Part No.	Part Name	Qty	Serial No.
1	(6128-81-7105)	AIR CLEANER ASS'Y	1	1240-
2	01643-31032	WASHER	8	1240-
3	01602-21030	WASHER	8	1005-
4	01580-11008	NUT	8	1005-
5	6127-81-4820	GASKET	1	1240-
6	287-02-13113	BRACKET	1	1240-
7	01010-51025	BOLT	6	1005-
8	01602-21030	WASHER	8	1005-
9	01643-31032	WASHER	6	1240-
10	(6128-81-7901)	PRE-CLEANER ASS'Y	1	1240-
11	6127-11-4360	BAND ASS'Y	1	1005-
12	6643-11-4641	BOLT	1	1240-
13	287-02-13121	BRACKET	1	1005-
14	287-02-13212	TUBE	1	1240-
15	6128-11-5610	GASKET	1	1005-
16	01010-51025	BOLT	2	1240-
17	287-02-13221	HOSE	1	1005-
18	07281-10609	CLAMP	2	1005-
19	6685-11-4333	HOSE	1	1240-
20	287-02-13141	TUBE	1	1240-
21	568-02-22240	ELBOW	1	1240-
22	287-09-11410	CLAMP	2	1240-
23	566-09-15210	CLAMP	2	1240-
24	287-02-13160	BRACKET	1	1240-
25	01010-51025	BOLT	4	1240-
26	01602-21030	WASHER	4	1240-
27	01643-31232	WASHER	4	1240-
28	287-02-13315	BRACKET	1	1240-
29	01010-51230	BOLT	6	1240-

**WS23S-1 S/N 1005-UP**  
**AIR CLEANER AND PIPING(#1240-)**

Item	Part No.	Part Name	Qty	Serial No.
30	01602-21236	WASHER	6	1240-
31	01010-51230	BOLT	6	1240-
32	01602-21236	WASHER	6	1240-
33	01643-31232	WASHER	6	1240-
34	01010-51225	BOLT	4	1240-
35	01602-21236	WASHER	4	1240-
36	6110-83-9610	INDICATOR	1	.-
	08670-00635	INDICATOR	1	1005-.
37	6110-83-9620	ADAPTER	1	1005-.

WS23S-1 S/N 1005-UP  
 @@Q71966

エアークリーナ  
 Fig. 105 AIR CLEANER



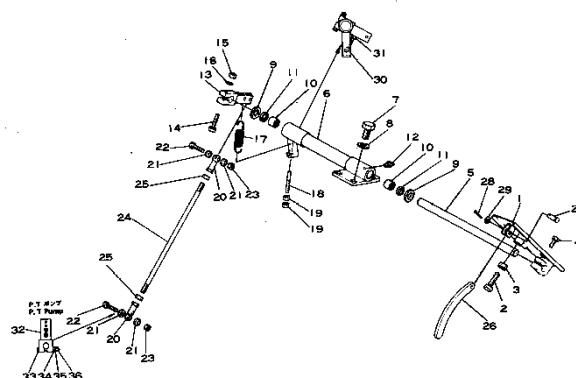
Ref. 105

Page 030090

WS23S-1 S/N 1005-UP  
 AIR CLEANER

Item	Part No.	Part Name	Qty	Serial No.
	6128-81-7105	AIR CLEANER ASS'Y	1	1240-
	□6128-81-7104	AIR CLEANER ASS'Y	1	-.1239
	□6128-81-7103	AIR CLEANER ASS'Y	1	1005-
1	6128-81-7113	· BODY	1	.-
	□6128-81-7112	· BODY	1	1005-.
2	6127-81-7412	· ELEMENT	1	.-
	□6127-81-7411	· ELEMENT	1	1005-.
3	600-181-7511	· WASHER	1	1240-
	600-181-4390	· WASHER	1	-.1239
	600-181-4591	· WASHER	1	1005-.
4	6128-81-7320	· ELEMENT	1	1005-
5	600-181-4440	· GASKET	1	1005-
6	600-181-4430	· CLIP	1	1005-
7	600-181-4370	· NUT	1	.-
	□600-181-4581	· NUT	1	1005-.
8	600-181-4420	· NUT	1	1005-
	6128-81-7901	PRE-CLEANER ASS'Y	2	1005-
9	600-181-4730	· HOOD	1	1005-
10	600-181-4870	· PRE-CLEANER	1	1005-

エンジン コントロール リンケージ (適用号機  
Fig. 108 ENGINE CONTROL LINKAGE (Serial No. 1005~1239))



WS23S-1 S/N 1005-UP  
ENGINE CONTROL LINKAGE(#1005-1239)

Item	Part No.	Part Name	Qty	Serial No.
1	287-43-11150	PEDAL	1	1005-1239
2	01010-51060	BOLT	1	1005-1239
3	01580-11008	NUT	1	1005-1239
4	01010-50830	BOLT	1	1005-1239
5	287-43-11132	SHAFT	1	1005-1239
6	287-43-11122	BRACKET	1	1005-1239
7	01010-51225	BOLT	4	1005-1239
8	01602-21236	WASHER	4	1005-1239
9	285-43-11360	SPACER	2	1005-1239
10	06120-01816	BEARING	2	1005-1239
11	06122-01803	SEAL	2	1005-1239
12	07020-00000	FITTING	1	1005-1239
13	287-43-11141	LEVER	1	1005-1239
14	01010-50845	BOLT	1	1005-1239
15	01580-10806	NUT	1	1005-1239
16	01602-20825	WASHER	1	1005-1239
17	287-43-11160	SPRING	1	1005-1239
18	285-43-11450	ROD	1	1005-1239
19	01580-10806	NUT	2	1005-1239
20	281-09-11720	END	2	1005-1239
21	281-43-11190	SPACER	4	1005-1239
22	01010-30845	BOLT	2	1005-1239
23	01598-00809	NUT	2	1005-1239
24	04245-40834	ROD	1	1005-1239
25	01580-10806	NUT	2	1005-1239
26	287-43-11210	PLATE	1	1005-1239
27	04205-11026	PIN	1	1005-1239
28	04050-13015	PIN	1	1005-1239
29	01641-21016	WASHER	1	1005-1239

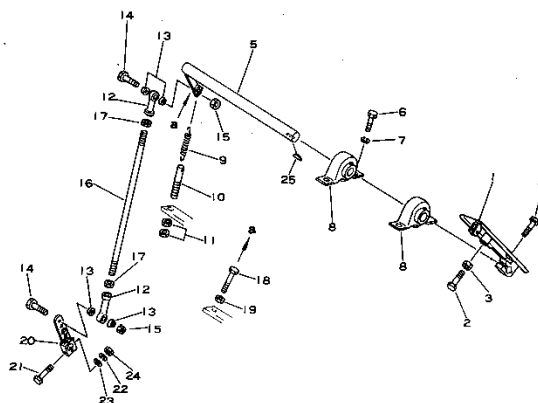


**WS23S-1 S/N 1005-UP**  
**ENGINE CONTROL LINKAGE(#1005-1239)**

---

Item	Part No.	Part Name	Qty	Serial No.
30	01010-50835	BOLT	1	1005-1239
31	01580-10806	NUT	1	1005-@
32	287-43-11310	LEVER	1	1005-1239
33	02030-70438	BOLT	1	1005-1239
34	01602-20720	WASHER	1	1005-@
35	6610-71-1840	WASHER	2	1005-1239
36	02216-10404	NUT	1	1005-1239

エンジン コントロール リンケージ (適用号機  
Serial No. 1240~)



Ref. 108A

Page 030110

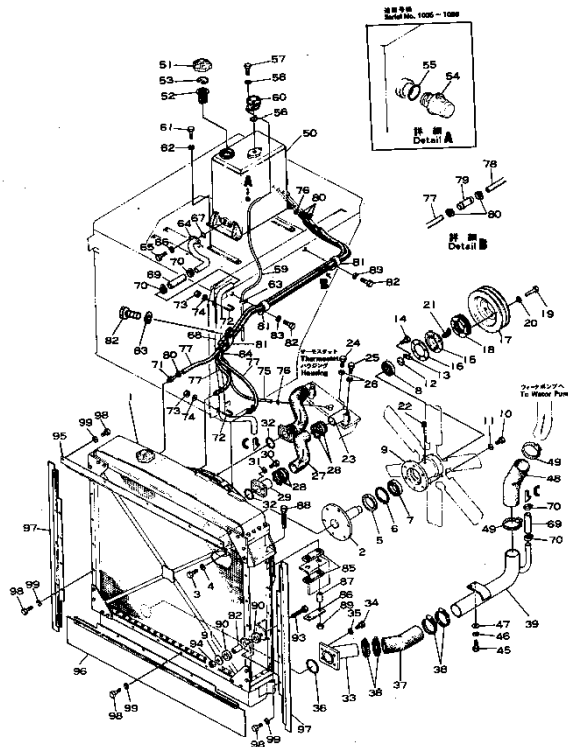
WS23S-1 S/N 1005-UP  
ENGINE CONTROL LINKAGE(#1240-)

Item	Part No.	Part Name	Qty	Serial No.
1	287-43-11151	PEDAL	1	1240-
2	01010-51065	BOLT	1	1240-
3	01580-11008	NUT	1	1005-
4	01010-50830	BOLT	1	1005-
5	287-43-11142	LEVER	1	1240-
6	01010-50820	BOLT	4	1240-
7	01602-20825	WASHER	4	1240-
8	06125-02051	BEARING	2	1240-
9	287-43-11160	SPRING	1	1005-
10	285-43-11450	ROD	1	1005-
11	01580-10806	NUT	2	1005-
12	281-09-11720	END	2	1005-
13	281-43-11190	SPACER	4	1005-
14	01010-30845	BOLT	2	1005-
15	01598-00809	NUT	2	1005-
16	04245-40834	ROD	1	1005-
17	01580-10806	NUT	2	1005-
18	01010-51060	BOLT	1	1240-
19	01580-11008	NUT	1	1240-
20	510-43-11310	LEVER	1	1240-
	☆	SPRING	1	1240-
21	02030-70438	BOLT	1	1005-
22	01602-20720	WASHER	1	1005-
23	6610-71-1840	WASHER	2	1005-
24	02215-10404	NUT	1	1005-
25	04010-00519	KEY	1	1240-

WS23S-1 S/N 1005-UP

@@Q71969

Fig. 120 クーリング システム (適用機種  
Serial No. 1005~1239)



Ref. 120

Page 030120

WS23S-1 S/N 1005-UP  
COOLING SYSTEM(#1005-1239)

Item	Part No.	Part Name	Qty	Serial No.
1	287-03-11103	RADIATOR ASS'Y	1	.-1239
	□287-03-11102	RADIATOR ASS'Y	1	1005-.
2	287-03-11810	SHAFT	1	1005-1239
3	01010-51230	BOLT	6	1005-1239
4	01602-21236	WASHER	6	1005-1239
5	07011-10080	SEAL	1	1005-1239
6	04065-01030	RING	1	1005-1239
7	06000-06211	BEARING	1	1005-1239
8	06000-06308	BEARING	1	1005-1239
9	6685-61-2130	SUPPORT	1	1005-1239
10	01010-51235	BOLT	6	1005-1239
11	01602-21236	WASHER	6	1005-1239
12	6685-61-2250	PLATE	1	1005-1239
13	6685-61-2261	PLATE	1	1005-1239
14	01010-50620	BOLT	2	1005-1239
15	6685-61-2411	COVER	1	1005-1239
16	6685-61-2420	GASKET	1	1005-1239
17	287-03-11890	PULLEY	1	1005-1239
	287-82-12110	PULLEY,(SANDY AND DUSTY SPEC.)	1	1005-1239
18	6685-60-2450	SHIM ASS'Y	1	1005-@
19	01010-51045	BOLT	6	1005-@
20	01602-21030	WASHER	6	1005-@
21	07020-00675	FITTING	1	1005-@
22	07043-00108	PLUG	2	1005-@
23	287-03-11831	TUBE	2	1005-1239
24	02010-70625	BOLT	2	1005-1239
25	02010-70689	BOLT	2	1005-1239
26	01602-21030	WASHER	4	1005-1239
27	287-03-11821	HOSE	2	1005-1239

**WS23S-1 S/N 1005-UP**  
**COOLING SYSTEM(#1005-1239)**

Item	Part No.	Part Name	Qty	Serial No.
28	07281-10809	CLAMP	8	1005-1239
29	287-03-11782	TUBE	2	1005-1239
30	01010-51235	BOLT	8	1005-1239
31	01602-21236	WASHER	8	1005-1239
32	07000-22075	O-RING	2	1005-1239
33	287-03-11711	FLANGE	1	1005-1239
34	01010-51435	BOLT	4	1005-1239
35	01602-21442	WASHER	4	1005-@
36	07000-22100	O-RING	1	1005-1239
37	287-03-11720	HOSE	1	1005-1239
38	07281-11159	CLAMP	4	1005-1239
39	287-03-11731	TUBE	1	1005-1239
45	01010-51025	BOLT	2	1005-1239
46	01602-21030	WASHER	2	1005-@
47	01642-21016	WASHER	2	1005-@
48	287-03-11741	HOSE	1	1005-@
49	07281-11159	CLAMP	2	1005-1239
50	287-03-11912	TANK	1	1005-1239
51	07053-10000	CAP	1	1005-1239
52	07056-00048	STRAINER	1	1005-1239
53	07057-03271	RING	1	1005-1239
54	287-03-11950	GLASS	1	1005-1066
55	287-03-11960	O-RING	1	1005-1066
56	07000-23045	O-RING	1	1005-1239
57	01010-51020	BOLT	2	1005-1239
58	01602-21030	WASHER	2	1005-1239
59	566-03-11240	TUBE	1	1005-1239
60	154-03-11681	VALVE	1	1005-1239
61	01010-51225	BOLT	4	1005-@
62	01602-21236	WASHER	4	1005-@
63	08036-10614	CLIP	1	1005-1239
64	287-03-11751	TUBE	1	1005-1239
65	01010-51030	BOLT	2	1005-1239
66	01602-21030	WASHER	2	1005-1239
67	07000-23028	O-RING	1	1005-1239
68	287-03-11761	TUBE	1	1005-1239
69	07260-22613	HOSE	2	1005-1239
70	07281-10419	CLAMP	4	1005-1239
71	287-03-11550	TUBE	3	1005-1239
72	07283-12738	CLIP	2	1005-1239
73	01582-11008	NUT	4	1005-1239
74	01602-21030	WASHER	4	1005-1239
75	07261-20921	HOSE	1	1005-1239
76	07281-10197	CLAMP	2	1005-1239
77	09483-00422	HOSE	3	1005-1239
78	09483-00406	HOSE	1	1005-1239
79	09484-00450	CONNECTOR	1	1005-1239
80	07281-10259	CLAMP	8	1005-1239
81	566-16-11560	CLIP	3	1005-1239
82	01010-51020	BOLT	3	1005-1239
83	01602-21030	WASHER	3	1005-1239
84	281-06-16710	BAND	5	1005-1239
85	285-03-11120	CUSHION	4	1005-1239
86	285-03-11140	PLATE	2	1005-1239
87	285-03-11150	SPACER	4	1005-1239
88	01051-51615	BOLT	4	1005-1239
89	01599-01617	NUT	4	1005-1239
90	285-03-11160	CUSHION	4	1005-1239
91	285-03-11170	PLATE	2	1005-1239
92	285-03-11150	SPACER	2	1005-1239
93	01050-51695	BOLT	2	1005-1239
94	01599-01617	NUT	2	1005-1239
95	287-03-11410	PLATE	1	1005-1239
96	287-03-11420	PLATE	1	1005-1239
97	287-03-11430	PLATE	2	1005-1239
98	01010-51016	BOLT	17	1005-1239

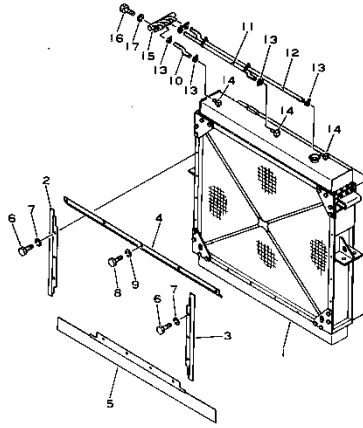
**WS23S-1 S/N 1005-UP**  
**COOLING SYSTEM(#1005-1239)**

---

Item	Part No.	Part Name	Qty	Serial No.
99	01602-21030	WASHER	17	1005-1239

WS23S-1 S/N 1005-UP  
 @@Q71970

Fig. 121 クーリング システム (1/3) (通用機種 (Serial No. 1240~))  
 COOLING SYSTEM (1/3) (Serial No. 1240~)



Ref. 121

Page 030130

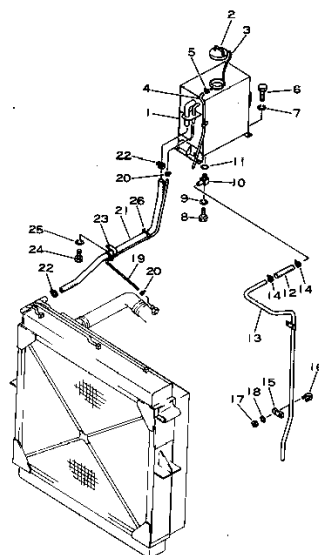
WS23S-1 S/N 1005-UP  
 COOLING SYSTEM (1/3)(#1240-)

Item	Part No.	Part Name	Qty	Serial No.
1	(287-03-11104)	RADIATOR ASS'Y	1	1240-
2	287-03-11440	BREAKER	1	1240-
3	287-03-11431	PLATE	1	1240-
4	287-03-11411	PLATE	1	1240-
5	287-03-11421	PLATE	1	1240-
6	01010-51225	BOLT	6	1240-
7	01602-21236	WASHER	6	1240-
8	01010-51016	BOLT	5	1240-
9	01602-21030	WASHER	5	1240-
10	07260-21432	HOSE	1	1240-
11	07260-21463	HOSE	1	1240-
12	07261-21411	HOSE	1	1240-
13	07281-20289	CLAMP	6	1240-
14	281-16-11870	ELBOW	3	1240-
15	287-03-11560	TUBE	1	1240-
16	01010-51020	BOLT	2	1240-
17	01602-21030	WASHER	2	1240-

WS23S-1 S/N 1005-UP

@@Q71971

クーリング システム (適用機種) (Serial No. 1240~)  
Fig. 122 COOLING SYSTEM (2/3)



Ref. 122

Page 030140

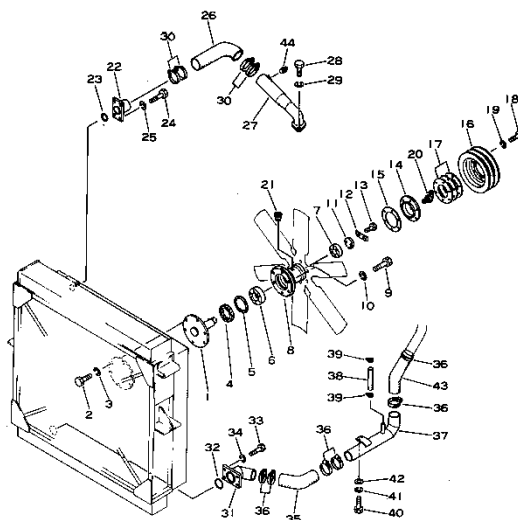
WS23S-1 S/N 1005-UP  
COOLING SYSTEM (2/3)(#1240-)

Item	Part No.	Part Name	Qty	Serial No.
1	287-03-11913	TANK	1	1240-
2	566-03-11540	CAP	1	1240-
3	566-95-37320	CHAIN	1	1240-
4	566-03-11241	TUBE	1	1005-
5	04059-01010	WIRE	1	1240-
6	01010-51225	BOLT	4	1005-
7	01602-21236	WASHER	4	1005-
8	01010-51060	BOLT	2	1240-
9	01602-21030	WASHER	2	1005-
10	287-03-11752	CONNECTOR	1	1240-
11	07000-23028	O-RING	1	1005-
12	07260-22620	HOSE	1	1240-
13	287-03-11762	TUBE	1	1240-
14	07281-10419	CLAMP	2	1005-
15	07283-52737	SEAT	1	1240-
16	07283-22738	CLIP	3	1240-
17	01599-01011	NUT	6	1240-
18	01643-31032	WASHER	6	1240-
19	07261-20918	HOSE	1	1240-
20	07281-00197	CLAMP	2	1240-
21	07261-22614	HOSE	1	1240-
22	07281-00489	CLAMP	2	1240-
23	281-01-13180	CLIP	1	1240-
24	01010-51220	BOLT	1	1240-
25	01602-21236	WASHER	1	1240-
26	08034-00536	BAND	2	1240-

WS23S-1 S/N 1005-UP

@@Q71972

クーリング システム (適用機種) (Serial No. 1240~)  
Fig. 123 COOLING SYSTEM (3/3)



Ref. 123

Page 030150

WS23S-1 S/N 1005-UP  
COOLING SYSTEM (3/3)(#1240-)

Item	Part No.	Part Name	Qty	Serial No.
1	287-03-11810	SHAFT	1	1005-
2	01010-51230	BOLT	6	1005-
3	01602-21236	WASHER	6	1005-
4	07011-10080	SEAL	1	1005-
5	04065-01030	RING	1	1005-
6	06000-06211	BEARING	1	1005-
7	06000-06308	BEARING	1	1005-
8	6685-61-2130	SUPPORT	1	1005-
9	01010-51235	BOLT	6	1005-
10	01602-21236	WASHER	6	1005-
11	6685-61-2250	PLATE	1	1005-
12	6685-61-2261	PLATE	1	1005-
13	01010-50620	BOLT	2	1005-
14	6685-61-2411	COVER	1	1005-
15	6685-61-2420	GASKET	1	1005-
16	287-82-12110	PULLEY	1	1240-
17	6685-60-2450	SHIM ASS'Y	1	1005-
18	01010-51045	BOLT	6	1005-
19	01602-21030	WASHER	6	1005-
20	07020-00675	FITTING	1	1005-
21	07043-00108	PLUG	2	1005-
22	287-03-11783	TUBE	1	1240-
23	07000-22075	O-RING	1	1240-
24	01010-51240	BOLT	4	1240-
25	01602-21236	WASHER	4	1240-
26	287-03-11822	HOSE	1	1240-
27	287-03-11832	TUBE	1	1240-
28	02010-70625	BOLT	2	1240-
29	01602-21030	WASHER	2	1240-

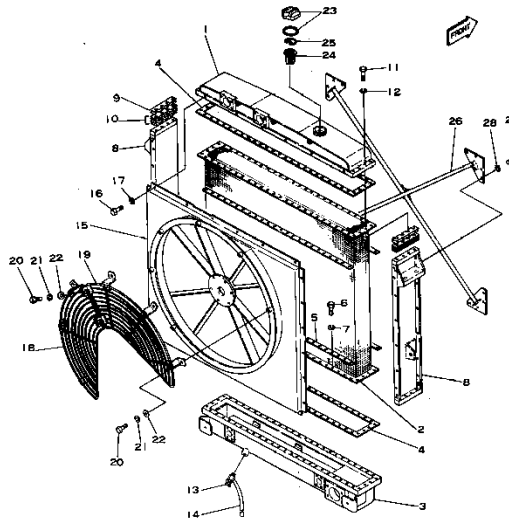


**WS23S-1 S/N 1005-UP**  
**COOLING SYSTEM (3/3)(#1240-)**

Item	Part No.	Part Name	Qty	Serial No.
30	566-09-15240	CLAMP	4	1240-
31	287-03-11712	FLANGE	1	1240-
32	07000-22100	O-RING	1	1005-
33	01010-51435	BOLT	4	1005-
34	01602-21442	WASHER	4	1005-
35	287-03-11720	HOSE	1	1005-
36	566-09-15260	CLAMP	6	1240-
37	287-03-11732	TUBE	1	1240-
38	07260-22620	HOSE	1	1240-
39	07281-10419	CLAMP	2	1005-
40	01010-51025	BOLT	2	1005-
41	01602-21030	WASHER	2	1005-
42	01642-21016	WASHER	2	1005-
43	287-03-11741	HOSE	1	1005-
44	07042-20312	PLUG	1	1240-

WS23S-1 S/N 1005-UP  
 @@Q71973

ラジエータ (適用機種)  
 Fig. 124 RADIATOR (Serial No. 1005~1239)



Ref. 124

Page 030160

WS23S-1 S/N 1005-UP  
 RADIATOR(#1005-1239)

Item	Part No.	Part Name	Qty	Serial No.
	287-03-11103	RADIATOR ASS'Y	1	1091-1239
	□287-03-11102	RADIATOR ASS'Y	1	1005-1090
1	287-03-11122	・ TANK	1	1005-1239
2	566-03-11131	・ CORE	1	1005-1239
3	287-03-11110	・ TANK	1	1091-@
	□566-03-11412	・ TANK ASS'Y	1	1005-1090
4	566-03-11151	・ GASKET	2	1005-@
5	566-03-11451	・ PLATE	4	1005-@
6	01010-51025	・ BOLT	96	1005-1239
7	01602-21030	・ WASHER	96	1005-@
8	287-03-11160	・ SUPPORT	2	1005-1239
9	566-03-11160	・ SHIM, 0.6MM	4	1005-1239
10	566-03-11170	・ SHIM	8	1005-1239
11	01010-51260	・ BOLT	16	1005-1239
12	01602-21236	・ WASHER	16	1005-1239
13	195-03-13241	・ VALVE	1	1005-@
14	07270-01515	・ TUBE	1	1005-1239
15	287-03-11193	・ GUARD	1	1091-1239
	□287-03-11192	・ GUARD	1	1005-1090
16	01010-51020	・ BOLT	24	1005-1239
17	01602-21030	・ WASHER	24	1005-1239
18	287-03-11211	・ NET	1	1005-1239
19	287-03-11221	・ NET	1	1005-1239
20	01010-51230	・ BOLT	8	1005-1239
21	01602-21236	・ WASHER	8	1005-@
22	01643-21232	・ WASHER	8	1005-1239
23	07053-10000	・ CAP	1	1005-1239
	07053-00002	・ GASKET	1	1005-1239
24	07056-00048	・ STRAINER	1	1005-1239

**WS23S-1 S/N 1005-UP**  
**RADIATOR(#1005-1239)**

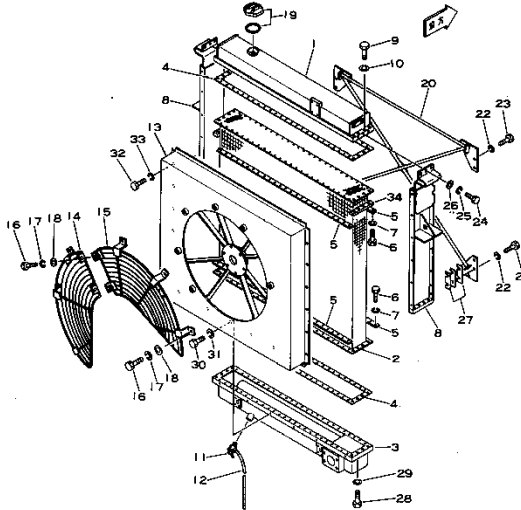
---

Item	Part No.	Part Name	Qty	Serial No.
25	07057-03271	· RING	1	1005-1239
26	566-03-11710	· STAY	1	1005-1239
27	01010-51225	· BOLT	16	1005-1239
28	01602-21236	· WASHER	16	1005-1239

WS23S-1 S/N 1005-UP

@@Q71974

Fig. 124A ラジエーター (適用機種 (Serial No. 1240~))



Ref. 124A

Page 030170

WS23S-1 S/N 1005-UP  
RADIATOR(#1240-)

Item	Part No.	Part Name	Qty	Serial No.
	287-03-11104	RADIATOR ASS'Y	1	1240-
1	287-03-11123	· TANK	1	1240-
2	569-03-11130	· CORE	1	1240-
3	287-03-11110	· TANK	1	1005-
4	566-03-11151	· GASKET	2	1005-
5	566-03-11451	· PLATE	4	1005-
6	01010-51030	· BOLT	96	1240-
7	01602-21030	· WASHER	96	1005-
8	287-03-11161	· SUPPORT	2	1240-
9	01010-51255	· BOLT	8	1240-
10	01602-31236	· WASHER	8	1240-
11	195-03-13241	· VALVE	1	1005-
12	07270-01515	· TUBE	1	1005-
13	287-03-11194	· GUARD	1	1240-
14	287-03-11212	· NET,L.H.	1	1240-
15	287-03-11222	· NET,R.H.	1	1240-
16	01010-51230	· BOLT	8	1005-
17	01602-21236	· WASHER	8	1005-
18	01643-21232	· WASHER	8	1005-
19	07053-10000	· CAP	1	1005-
	07053-00002	· GASKET	1	1005-
20	287-03-11180	· STAY	1	1240-
21	01010-51235	· BOLT	8	1240-
22	01602-21236	· WASHER	12	1005-
23	01010-51230	· BOLT	4	1240-
24	01010-51230	· BOLT	6	1240-
25	01602-21236	· WASHER	6	1240-
26	01643-31232	· WASHER	6	1240-
27	566-03-11720	· SHIM	6	1240-

**WS23S-1 S/N 1005-UP  
RADIATOR(#1240-)**

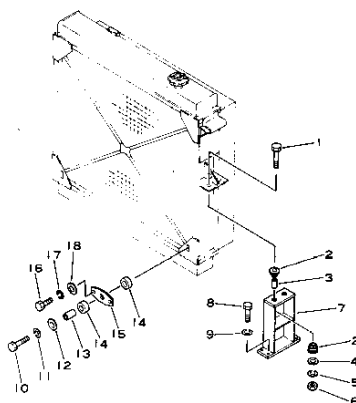
---

Item	Part No.	Part Name	Qty	Serial No.
28	01010-51265	· BOLT	8	1240-
29	01602-21236	· WASHER	8	1240-
30	01010-51020	· BOLT	6	1240-
31	01602-21030	· WASHER	6	1240-
32	01010-51225	· BOLT	12	1240-
33	01602-21236	· WASHER	12	1240-
34	569-03-11240	· PLATE	2	1240-

WS23S-1 S/N 1005-UP

@@Q71975

Fig. 125 ラジエータ マウンティング (適用号機 (Serial No. 1240~))  
RADIATOR MOUNTING (Serial No. 1240~)



Ref. 125

Page 030180

WS23S-1 S/N 1005-UP  
RADIATOR MOUNTING(#1240-)

Item	Part No.	Part Name	Qty	Serial No.
1	01011-51600	BOLT	4	1240-
2	566-54-12211	CUSHION	8	1240-
3	569-03-12190	SPACER	4	1240-
4	565-54-12841	WASHER	4	1240-
5	01602-21648	WASHER	4	1240-
6	01580-11613	NUT	4	1240-
7	569-03-12180	SUPPORT	2	1240-
8	01010-51440	BOLT	8	1240-
9	01602-21442	WASHER	8	1240-
10	01010-51690	BOLT	2	1240-
11	01602-21648	WASHER	2	1240-
12	285-03-11170	PLATE	2	1240-
13	285-03-11150	SPACER	2	1240-
14	285-03-11160	CUSHION	4	1240-
15	287-03-11450	PLATE	2	1240-
16	01016-51240	BOLT	4	1240-
17	01602-21236	WASHER	4	1240-
18	01641-21223	WASHER	4	1240-



**Download the full PDF manual instantly.**

**Our customer service e-mail:**

**[aservicemanualpdf@yahoo.com](mailto:aservicemanualpdf@yahoo.com)**