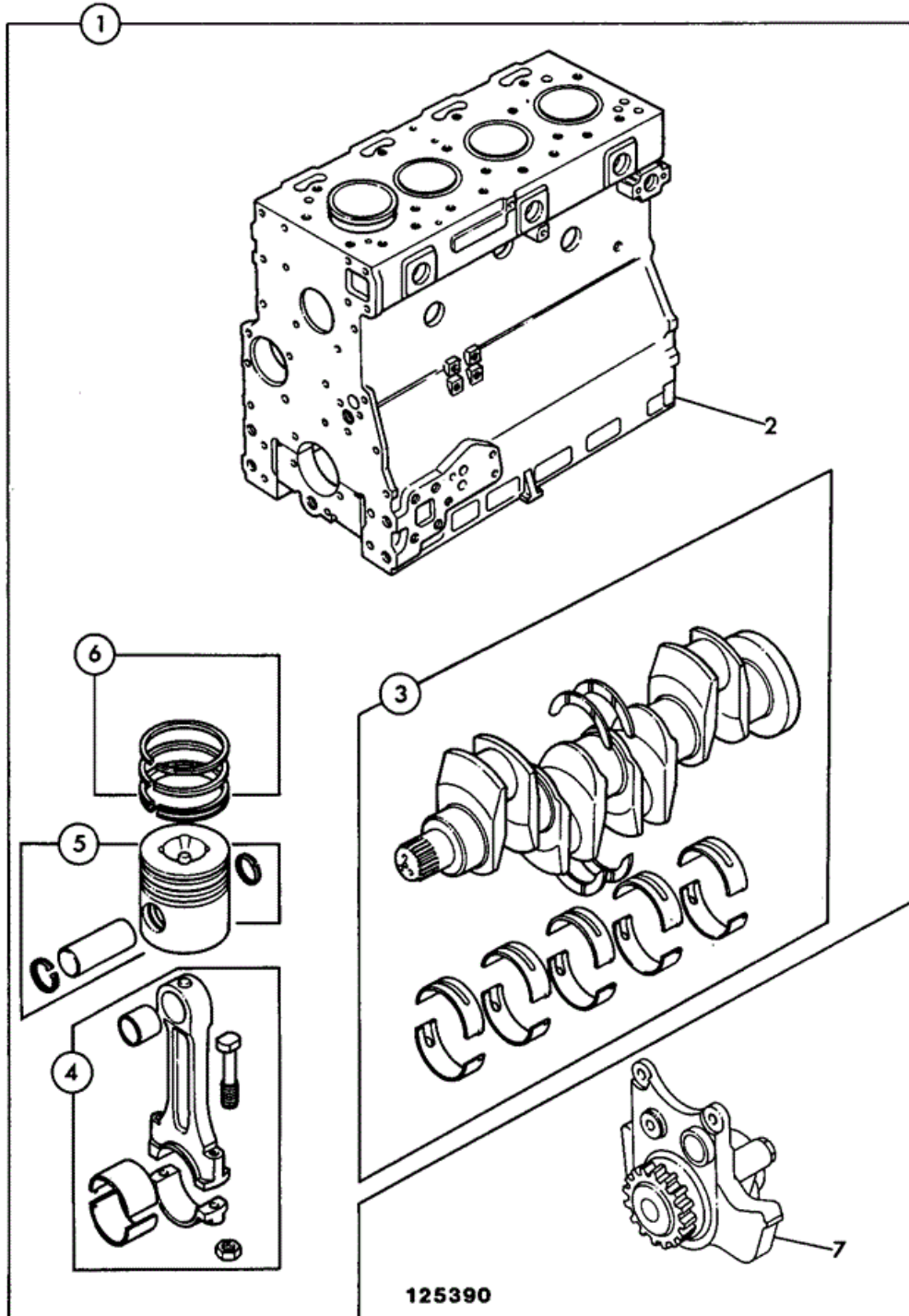




## 9802/7800 N1-2-4 ENGINE, SHORT AB BUILD



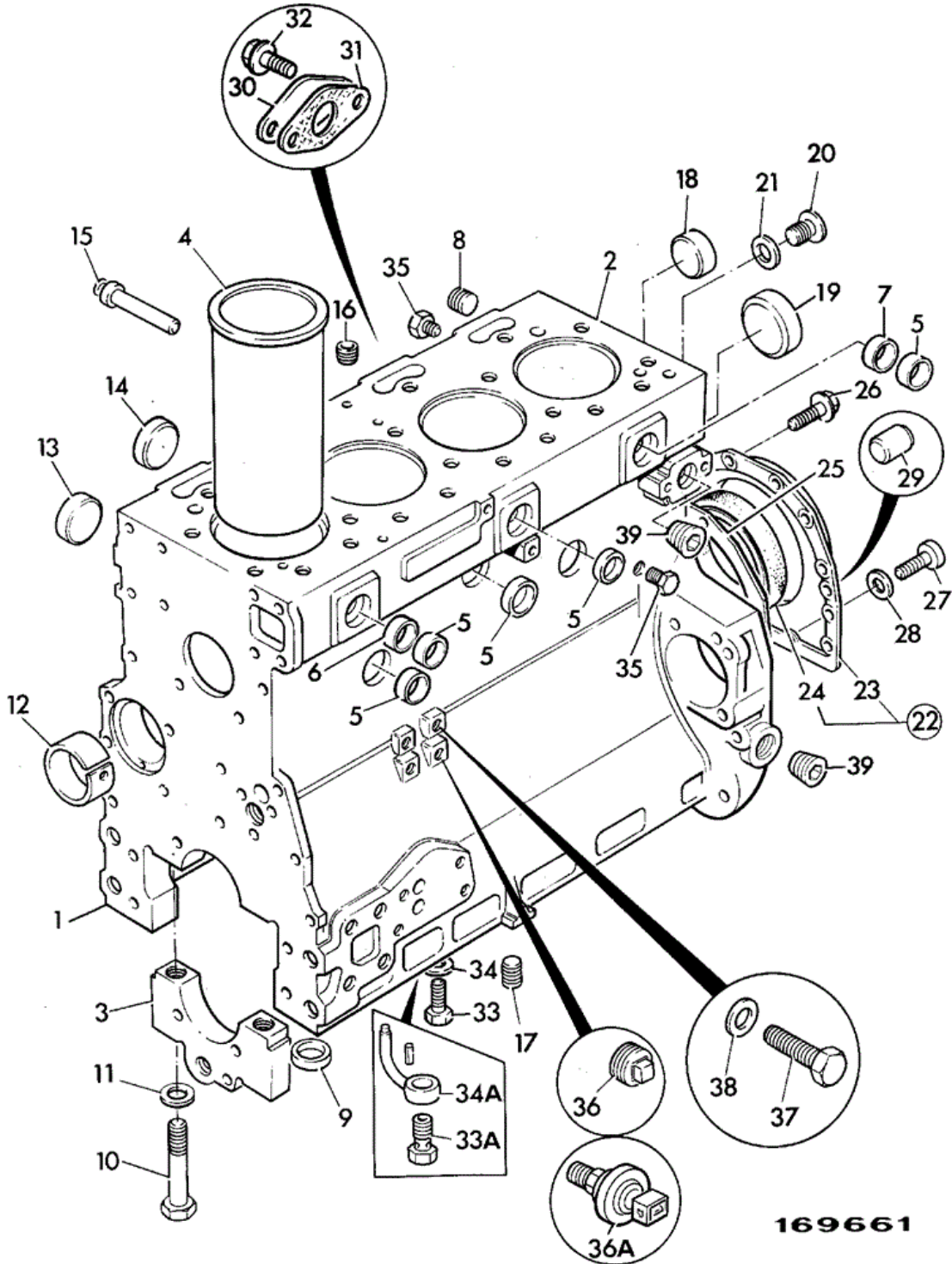
| Item | Part #    | Change No  | Description  | Usage Code | QTY |
|------|-----------|------------|--|------------|-----|
| 1    | 02/200444 | Superseded | Engine short, 1004-4T<br><i>See Note 1</i>                             |            | 1   |
| 1    | 02/200446 |            | Engine short, 1004-4T turbocharged                                     |            | 1   |
| 2    | ****      |            | 'See Remark'<br><i>See frame N1-3-2, Block assembly</i>                |            | 1   |
| 3    | ****      |            | 'See Remark'<br><i>See frame N1-4-4, Crankshaft assembly</i>           |            | 1   |
| 4    | ****      |            | 'See Remark'<br><i>See frame N1-4-4, Con-rod assembly</i>              |            | 4   |
| 5    | ****      |            | 'See Remark'<br><i>See frame N1-4-4, Piston assembly</i>               |            | 4   |
| 6    | ****      |            | 'See Remark'<br><i>See frame N1-4-4, Piston ring kit</i>               |            | 4   |
| 7    | ****      |            | 'See Remark'<br><i>See frame N5-2-2, Oil pump</i><br><i>See Note 2</i> |            | 1   |

*Note 1: Items on this frame are applicable to Engines AB50444 from U608787W, AB50445 from U609165X*

*Note 2: Not included in item 1*



# 9802/7800 N1-3-1 BLOCK ASSEMBLY AA & AB BUILDS



| Item | Part #    | Change No  | Description                                     | Usage Code | QTY |
|------|-----------|------------|---|------------|-----|
| 1    | 02/200190 | <EU707726A | Block cylinder assembly<br><i>AA Build only</i> |            | 1   |
| 1    | 02/201315 |            | Block cylinder assembly                         |            | 1   |

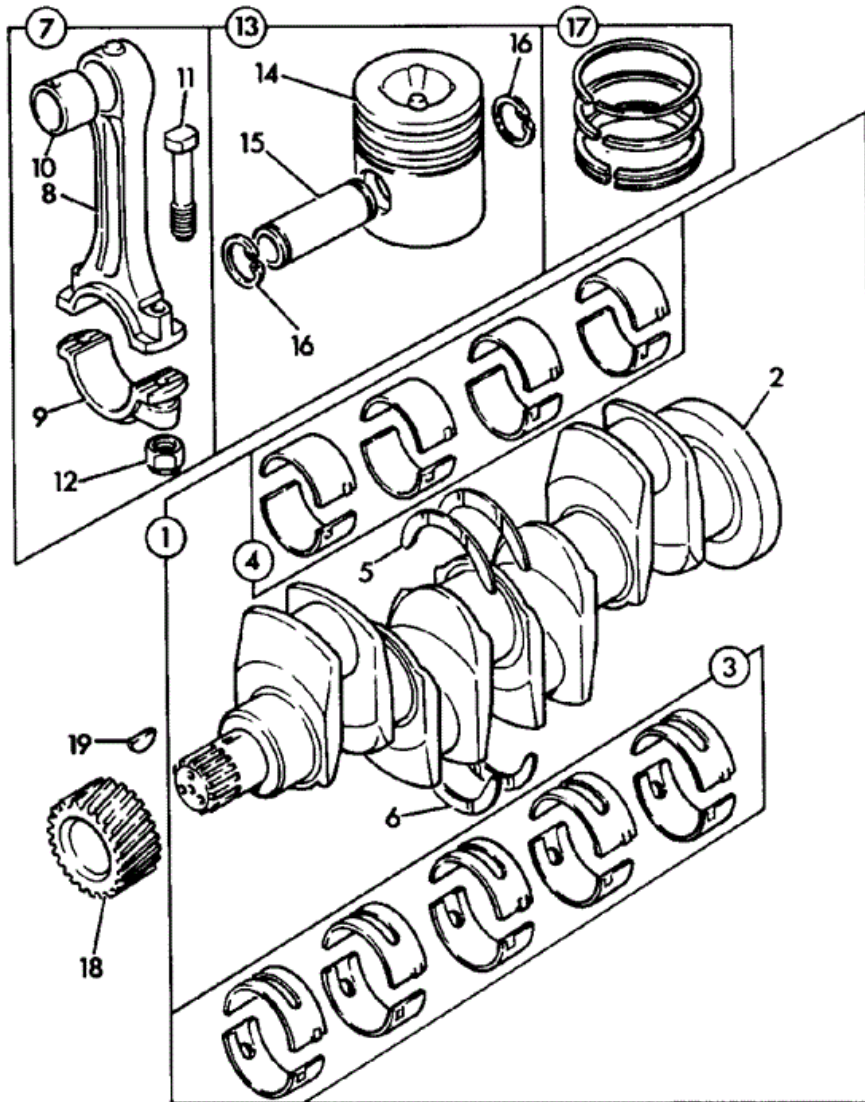
|     |            |            |  |    |
|-----|------------|------------|--|----|
| 1   | 02/200470  | Superseded | Block cylinder assembly<br><i>AB Build only, Includes items 33A &amp; 34A</i>        | 1  |
| 1   | 02/201300  |            | Block assembly, cylinder   | 1  |
| 2   | ****       |            | None serviced part<br><i>Block</i>   | 1  |
| 3   | ****       |            | None serviced part<br><i>Bearing Cap</i>   | 5  |
| 4   | :02/200949 |            | Liner cylinder, press fit<br><i>Refer to Service Workshop Manual.<br/>See Note 1</i> | 4  |
| 4   | 02/200002  |            | Liner cylinder, slip fit   | 0  |
| 5   | :02/100396 |            | Plug core D=32mm   | 6  |
| 6   | :02/201304 |            | Plug   | 1  |
| 7   | :02/200003 |            | Plug core" D=26mm<br><i>Was 2 off</i>  | 1  |
| 8   | :02/100134 |            | Plug   | 1  |
| 9   | :02/100101 |            | Thimble  | 10 |
| 10  | :02/100102 |            | Bolt   | 10 |
| 11  | ****       |            | 'See Remark'<br><i>No longer fitted or required</i>                                  | 10 |
| 12  | :02/192001 |            | Bush camshaft  | 1  |
| 13  | :02/100397 | Superseded | Plug core D=38mm   | 4  |
| 13  | :02/200454 |            | Plug core D=38mm   | 4  |
| 14  | :02/100397 | Superseded | Plug core D=38mm   | 2  |
| 14  | :02/200454 |            | Plug core D=38mm   | 2  |
| 15  | :02/101827 |            | Plug   | 1  |
| 16  | 02/100108  |            | Plug   | 1  |
| 17  | 02/100582  |            | Plug core D=16mm   | 1  |
| 18  | 02/100397  | Superseded | Plug core D=38mm   | 4  |
| 18  | 02/200454  |            | Plug core D=38mm   | 4  |
| 19  | 02/100107  |            | Plug core D=50mm   | 1  |
| 20  | 02/100111  |            | Plug   | 1  |
| 21  | 823/00276  |            | Washer   | 1  |
| 22  | 02/200223  | Superseded | Housing rear seal  | 1  |
| 22  | M.S.S      |            | Multi Supersession<br><i>Part N.L.A use 22A with 27A</i>                             | 1  |
| 22A | 02/200523  | Superseded | Housing rear seal  | 1  |
| 22A | M.S.S      | <EU619893X | Multi Supersession<br><i>See Note 2</i>  | 1  |
| 22B | 02/200958  | >EU619894X | Housing rear seal  | 1  |
| 23  | ****       |            | None serviced part<br><i>Cover</i>   | 1  |
| 24  | :02/101436 |            | Seal rear oil  | 1  |
| 25  | 02/100113  | <EU619893X | Gasket rear seal housing   | 1  |
| 25A | 02/201092  | >EU619894X | Gasket rear seal housing   | 1  |
| 26  | 826/00869  |            | Screw flange head  | 10 |
| 26A | 826/00869  | >EU619894X | Screw flange head  | 2  |
| 27  | 02/291063  |            | Screw  | 2  |
| 27A | 1391/3307Z |            | Capscrew M8x25mm<br><i>Used only with item 22A</i>                                   | 2  |
| 28  | 02/100307  |            | Washer   | 2  |
| 29  | 02/100308  |            | Dowel  | 2  |
| 30  | 02/200004  |            | Plate<br><i>AA Build only</i>  | 1  |
|     |            |            |  |    |

|     |            |            |   |  |   |
|-----|------------|------------|---|--|---|
| 31  | 02/200005  |            | Gasket<br><i>AA Build only</i>                          |  | 1 |
| 32  | 02/291031  |            | Bolt<br><i>AA Build only</i>                            |  | 2 |
| 33  | 02/101756  |            | Plug<br><i>AA Build only</i>                            |  | 4 |
| 33A | ****       |            | 'See Remark'<br><i>AB Build only - See frame N5-3-1</i> |  | 4 |
| 34  | 823/00287  |            | Washer spacer<br><i>AA Build only</i>                   |  | 4 |
| 34A | ****       |            | 'See Remark'<br><i>AB Build only - See frame N5-3-1</i> |  | 4 |
| 35  | 02/100132  |            | Plug drain<br><i>Water drain</i>                        |  | 2 |
| 35  | 02/100335  |            | Tap drain<br><i>Alternative</i>                         |  | 0 |
| 36  | 826/00765  | <M567362   | Plug  |  | 1 |
| 36A | 701/26800  | Superseded | Switch oil pressure engine<br><i>See Note 3</i>         |  | 1 |
| 36A | 701/41500  |            | Switch oil pressure                                     |  | 1 |
| 37  | 1315/0401Z |            | Bolt M10 x 10   |  | 1 |
| 38  | 823/00273  |            | Washer  |  | 1 |
| 39  | 02/100134  |            | Plug<br><i>AA Build only</i>                            |  | 1 |

*Note 1: Special tools required for fitting, boring and honing. For normal Service use slip-fit type*

*Note 2: Part No Longer Available use 22B with items 25A, 26A, 27A and 1 off bridge piece 02/201094.*

*Note 3: Also fitted to M567180, M567194, M567208, M567215, M567233, M567247.*



095660

| Item | Part #     | Change No | Description                              | Usage Code | QTY |
|------|------------|-----------|--|------------|-----|
| 1    | 02/101927  |           | Crankshaft assembly<br><i>See Note 1</i> |            | 1   |
| 2    | ****       |           | None serviced part<br><i>Crankshaft</i>  |            | 1   |
| 3    | :02/192002 |           | Kit-bearing Main Standard                |            | 1   |
| 3    | 02/192003  |           | Kit-bearing Main Undersize - .010inch    |            | 1   |

|    |            |            |  |   |
|----|------------|------------|--|---|
| 3  | 02/192004  |            | Kit-bearing Main Undersize - .020inch    | 1 |
| 3  | 02/192005  |            | Kit-bearing Main Undersize - .030inch    | 1 |
| 4  | :02/192085 |            | Kit-bearing 4 Pairs Standard             | 1 |
| 4  | 02/192086  |            | Kit-bearing 4 Pairs Undersize - .010inch | 1 |
| 4  | 02/192087  |            | Kit-bearing 4 Pairs Undersize - 0.20inch | 1 |
| 4  | 02/192088  |            | Kit-bearing 4 Pairs Undersize - 0.30inch | 1 |
| 5  | :02/192083 |            | Washer thrust top - standard             | 2 |
| 5  | 02/192011  |            | Washer thrust top-oversize 0.19mm        | 2 |
| 6  | :02/192084 |            | Washer thrust bottom - standard          | 2 |
| 6  | 02/192013  |            | Washer thrust btm-oversize 0.19mm        | 2 |
| 7  | 02/101632  |            | Rod assembly connecting                  | 4 |
| 8  | ****       |            | None serviced part<br><i>Con-rod</i>     | 1 |
| 9  | ****       |            | None serviced part<br><i>Cap</i>         | 1 |
| 10 | :02/192019 |            | Bush small end                           | 1 |
| 11 | :02/291072 |            | Bolt                                     | 2 |
| 12 | :02/100128 |            | Nut                                      | 2 |
| 13 | 02/200007  | Superseded | Piston assembly                          | 4 |
| 13 | 02/200425  | Superseded | Piston assembly                          | 4 |
| 13 | 02/200782  | <EU587746W | Piston assembly                          | 4 |
| 13 | 02/200825  | Superseded | Piston assembly                          | 4 |
| 13 | 02/200782  | >EU587747W | Piston assembly                          | 4 |
| 14 | ****       |            | None serviced part<br><i>Piston</i>      | 1 |
| 15 | ****       |            | None serviced part<br><i>Gudgeon pin</i> | 1 |
| 16 | :02/100129 |            | Circlip                                  | 2 |
| 17 | 02/200020  |            | Kit-piston ring                          | 4 |
| 18 | 02/290001  |            | Gear                                     | 1 |
| 19 | 02/100038  |            | Key                                      | 1 |

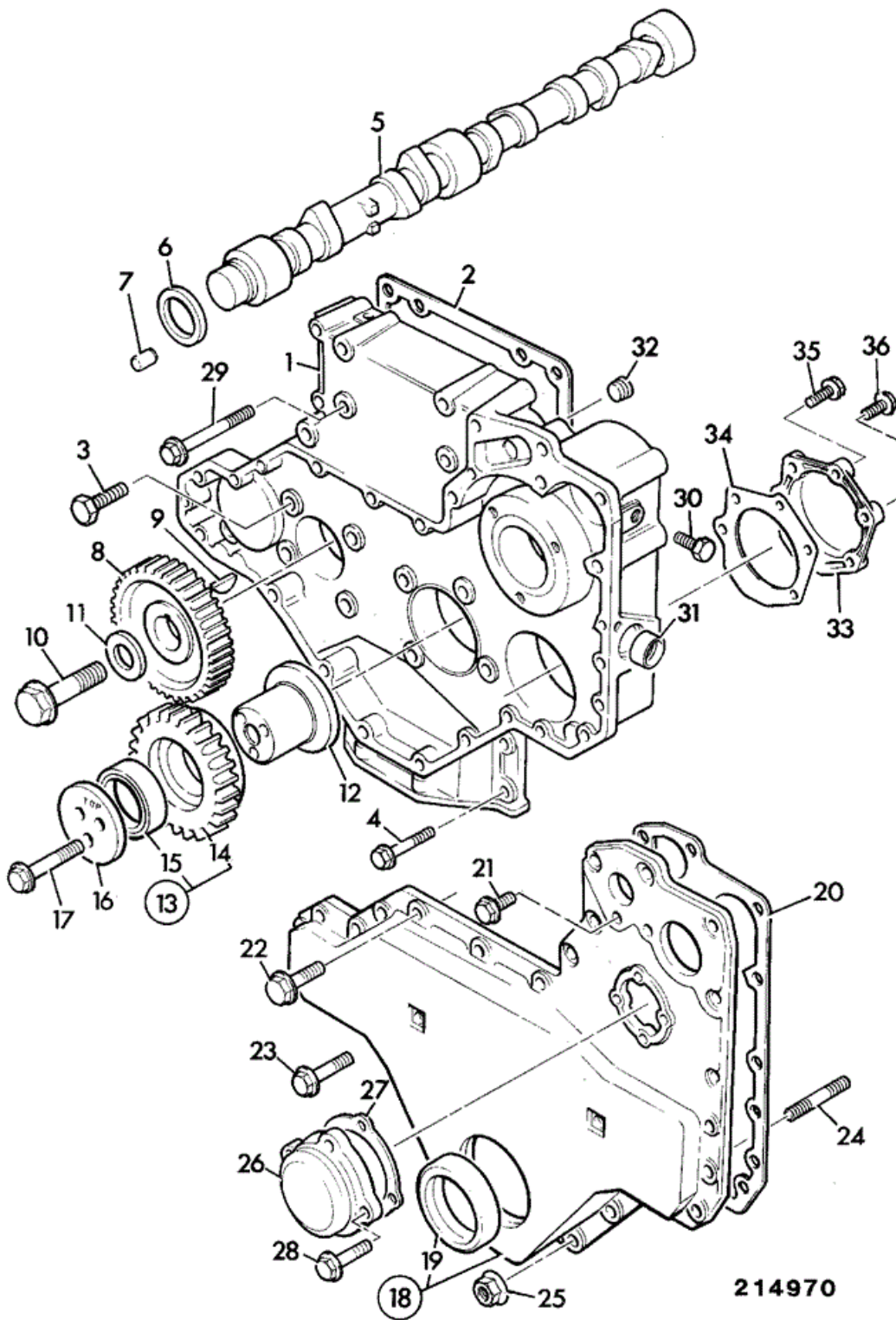
Note 1: Items on this frame are applicable to Engines AB50304 up to U608786W, AB50260 to U609164X







|    |            |            |  |  |   |
|----|------------|------------|--|--|---|
| 5  | 714/10810  |            | Kit-sundry parts                                       |  | 1 |
| 6  | 02/200212  |            | Pulley alternator D=86mm single groove                 |  | 1 |
| 6A | 02/200019  |            | Pulley alternator twin groove                          |  | 1 |
| 7  | 02/200426  |            | Belt fan drive, pair                                   |  | 1 |
| 8  | 209/02321  | Superseded | Fan cooling, 18" 6 blades                              |  | 1 |
| 8  | 141/18300  | <M585238   | Fan cooling, 18" 10 blades                             |  | 1 |
| 8  | 262/36800  |            | Fan cooling, 20" puller                                |  | 1 |
| 8A | 262/36800  |            | Fan cooling, 20" puller<br><i>AB BUILD 102BHP ONLY</i> |  | 1 |
| 9  | 1305/0105Z |            | Bolt   |  | 4 |
| 10 | 1416/0005Z |            | Washer spring - 5/16" Zinc plated                      |  | 4 |



| Item | Part #    | Change No  | Description  | Usage Code | QTY |
|------|-----------|------------|--|------------|-----|
| 1    | 02/200021 | Superseded | Casing timing, twin p.t.o  |            | 1   |
| 1    | M.S.S     |            | Multi Supersession<br><i>Part N.L.A use 1A with items 22 &amp; 23A</i> |            | 1   |
| 1A   | 02/200948 |            | Casing timing, twin p.t.o<br><i>AB50444, AB50445 Builds</i>            |            | 1   |
| 2    | 02/200022 |            | Gasket t/case to block   |            | 1   |

|     |            |            |  |  |    |
|-----|------------|------------|--|--|----|
| 3   | 826/00869  |            | Screw flange head                      |  | 8  |
| 4   | 02/291033  |            | Bolt                                   |  | 4  |
| 5   | 02/200023  |            | Camshaft                               |  | 1  |
| 6   | 02/192064  |            | Washer thrust                          |  | 1  |
| 7   | 2102/0604  |            | Dowel                                  |  | 1  |
| 8   | 02/190034  |            | Gear camshaft                          |  | 1  |
| 9   | 02/100038  |            | Key                                    |  | 1  |
| 10  | 02/291047  |            | Bolt                                   |  | 1  |
| 11  | 02/291065  |            | Washer                                 |  | 1  |
| 12  | 02/100041  |            | Hub                                    |  | 1  |
| 13  | 02/190033  |            | Gear idler assembly                    |  | 1  |
| 14  | :N.S.P.    |            | None serviced part<br><i>Gear</i>      |  | 1  |
| 15  | :02/192016 |            | Bush                                   |  | 2  |
| 16  | 02/100042  |            | Plate                                  |  | 1  |
| 17  | 02/291073  |            | Screw                                  |  | 3  |
| 18  | 02/200026  | Superseded | Cover timing case                      |  | 1  |
| 18  | 02/200486  |            | Cover timing                           |  | 1  |
| 19  | :02/101435 |            | Seal front oil                         |  | 1  |
| 20  | 02/200027  | Superseded | Gasket timing cover                    |  | 1  |
| 20  | 02/200728  |            | Gasket timing cover                    |  | 1  |
| 21  | 02/291026  |            | Bolt                                   |  | 6  |
| 22  | 02/291018  |            | Bolt<br><i>Used only with item 1A</i>  |  | 9  |
| 23  | 02/291017  |            | Screw                                  |  | 11 |
| 23A | 02/291017  |            | Screw<br><i>Used only with item 1A</i> |  | 1  |
| 24  | 02/291051  |            | Stud                                   |  | 2  |
| 25  | 02/291058  |            | Nut flanged M8                         |  | 2  |
| 26  | 02/200028  |            | Cover inspection                       |  | 1  |
| 27  | 02/200029  |            | Gasket inspection cover                |  | 1  |
| 28  | 02/291014  |            | Bolt                                   |  | 4  |
| 29  | 02/291038  |            | Bolt                                   |  | 4  |
| 30  | 02/291074  |            | Bolt                                   |  | 1  |
| 31  | 02/100397  |            | Plug core D=38mm                       |  | 1  |
| 32  | 02/100409  |            | Plug taper threaded                    |  | 1  |
| 33  | 02/200034  |            | Plate                                  |  | 1  |
| 34  | 02/200035  |            | Gasket                                 |  | 1  |
| 35  | 02/291033  |            | Bolt                                   |  | 5  |
| 36  | 02/291037  |            | Bolt                                   |  | 1  |



**Download the full PDF manual instantly.**

**Our customer service e-mail:**

**[aservicemanualpdf@yahoo.com](mailto:aservicemanualpdf@yahoo.com)**