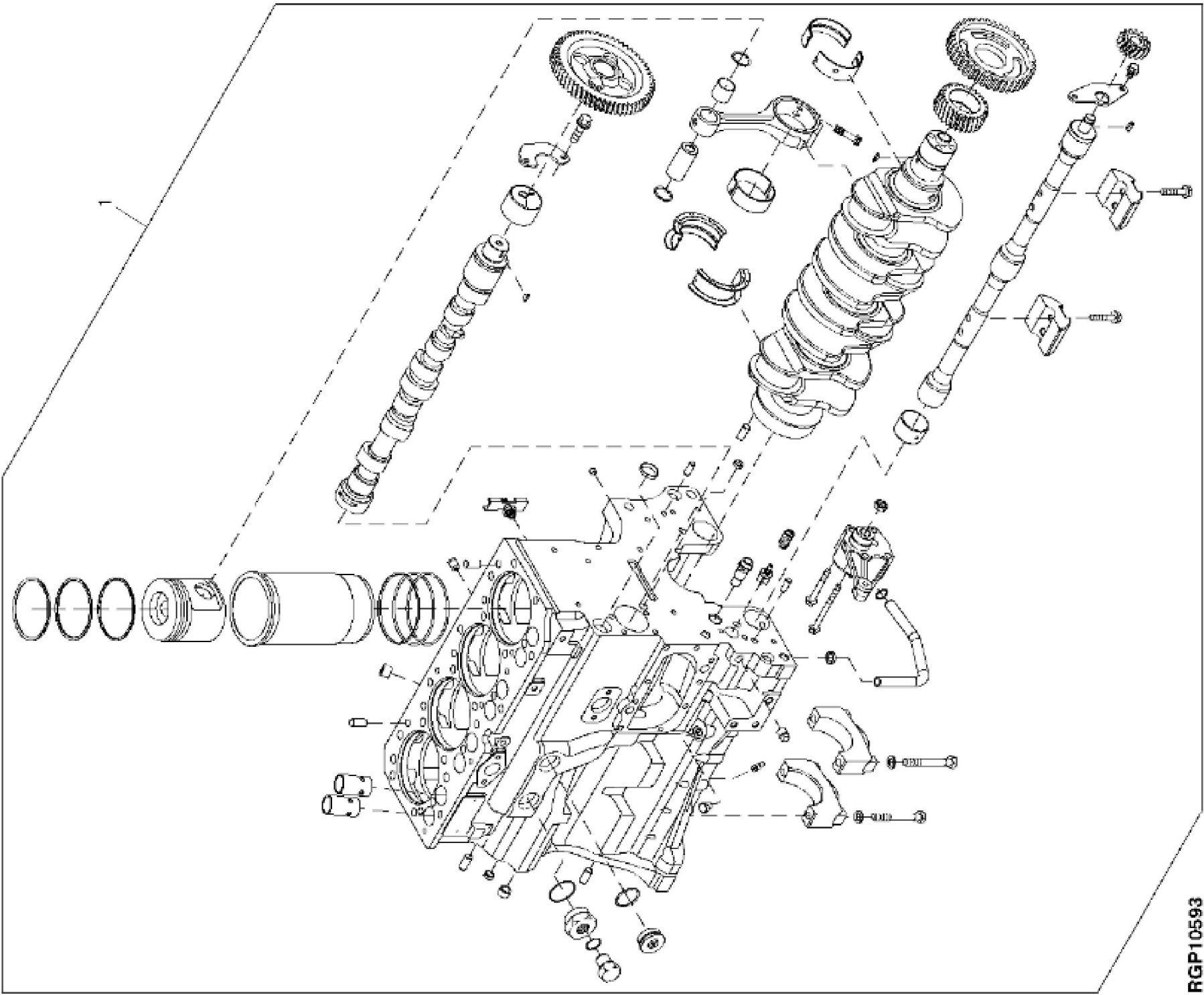


RGPI1897

John Deere > Turf And Utility >TRACTOR >5725N - TRACTOR >5425N and 5725N Narrow Tractors (Worldwide Edition) >20 ENGINE 4045DP052-RE517022 >ST685870 - 4607 CYLINDER BLOCK FITTINGS, MAIN BEARING CAPS

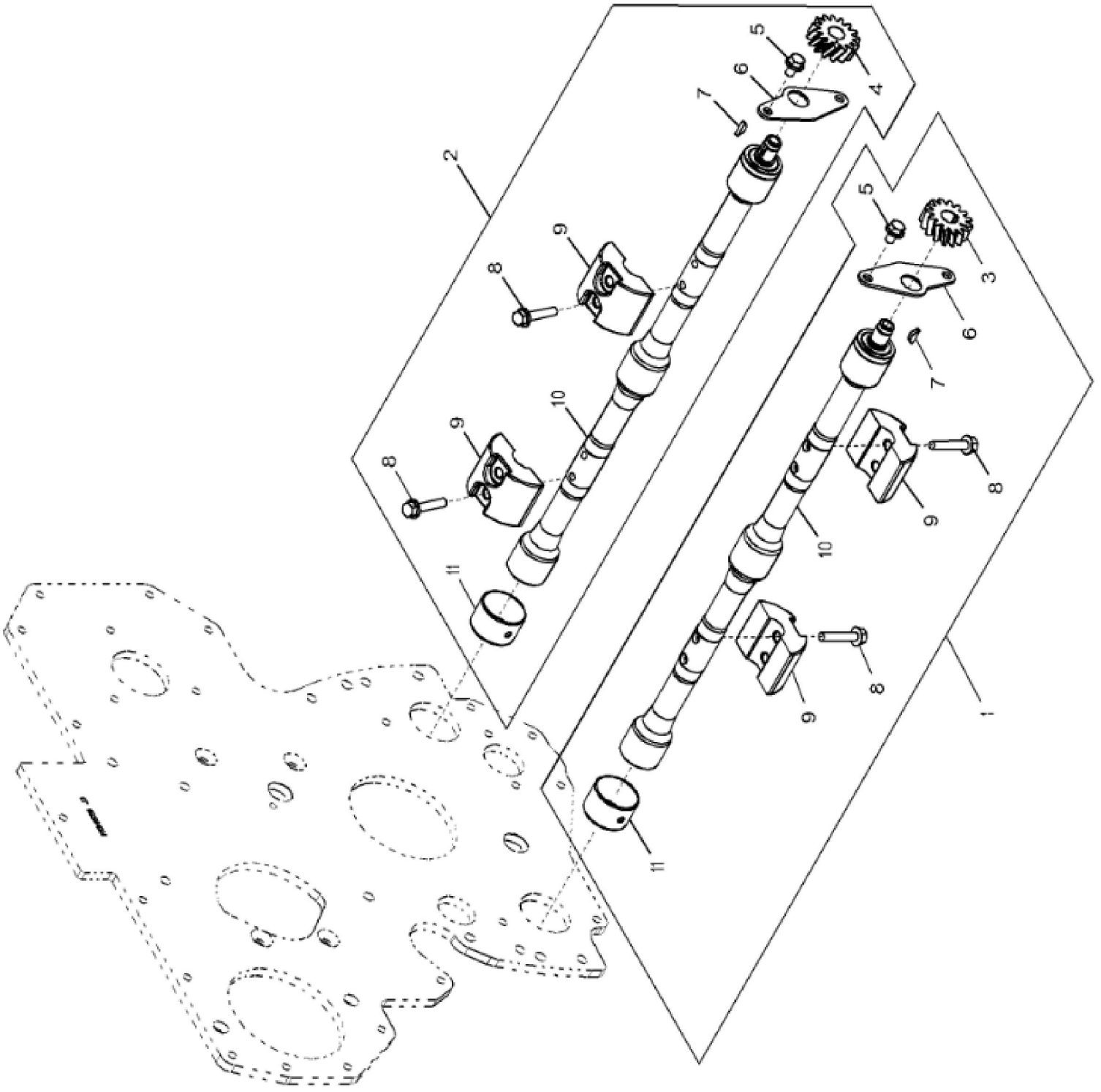
KEY	PART NO.	PART NAME	QTY	Engine Serial No.	REMARKS
1	CYLINDER BLOCK	1		NSEP (ORDER RE56375)
2	R48685	DOWEL PIN	4		
3	RE57836	PIPE PLUG	AR		(WITH SEALANT) 1/2"-14NPT
4	R55233	PIPE PLUG	1		1/4"-18NPT
5	AT13740	DRAIN VALVE	NA		1/4"-18NPT
6	R104592	PIPE PLUG	4		1/8"-27NPT
7	R116466	PLUG	1		OD 32MM
8	R26650	DOWEL PIN	2		
9	R26493	BUSHING	1	____-XXXXXX	
10	R119874	BUSHING	1		(ALSO ORDER TY6333)
11	T18891	PLUG	2		OD 16MM
12	R115299	BUSHING	6		
13	R111137	SPRING	1		
14	R121043	VALVE	1		
15	RE63674	VALVE	1		
16	R75892	O-RING	1	____-XXXXXX	(USE WITH R115390)
17	R115390	BUSHING	1	____-XXXXXX	(USE WITH R75892)
18	15H623	PIPE PLUG	1		3/8"
19	R131182	ORIFICE	4		
20	R114241	BEARING CAP	4		
21	T20168	WASHER	10		
22	T23474	CAP SCREW	10		
23	R132186	BEARING CAP	1		
24	U13639	O-RING	1		
25	RE508185	FITTING	AR		1-5/8"-12UN, (SUB FOR RE502422) (SUB FOR R39741, THIS APPLICATION)
26	U13639	O-RING	1		
27	R123616	PLUG	1		1-5/8"-12UN X M18X1.5
28	51M7043	O-RING	AR		15.300 X 2.200 mm
29	RE46685	FITTING PLUG	AR		
30	PM38655	SEALANT	AR		
31	RE505501	BLEED VALVE	1	XXXXXX-____	
32	R97185	O-RING	1	XXXXXX-____	

KEY	PART NO.	PART NAME	QTY	Engine Serial No.	REMARKS	
33	R132518	PLATE	1			
34	19M8999	SCREW	2		M8 X 25	
35	R133303	SHAFT KEY	1			
36	CAMSHAFT	1			
37	HELICAL GEAR	1			
38	RE56375	CAMSHAFT	1			
38	SE501624	CAMSHAFT REMAN	1		(REMAN FOR RE56375)	



RGP10593

KEY	PART NO.	PART NAME	QTY	REMARKS	
1	RE500731	SHORT BLOCK ASSEMBLY	1	(MARKED R516309) (ALSO ORDER RE527042 AND D015664)	
..	SE500722	COMPLETE BLOCK ASSY REMAN	1	(WITH STANADYNE ROTARY FUEL INJECTION PUMP) (SUB FOR RE516262)	



KEY	PART NO.	PART NAME	QTY	REMARKS	
1	RE502449	BALANCER SHAFT	1	RH, KIT, Standard Duty	
2	RE502448	BALANCER SHAFT	1	LH, KIT, Standard Duty	
3	R120637	GEAR	1	Z= 15, RH	
4	R120639	GEAR	1	Z= 15, LH	
5	19M8998	SCREW	4	M8 X 12, SUB FOR APPL 19M7864	
6	PLATE	2	ORDER RE502448 OR RE502449	
7	R133303	SHAFT KEY	2		
8	19M8882	SCREW	8	M8 X 40, SUB FOR APPL 19M7798	
9	R500265	WEIGHT	4		
10	BALANCER SHAFT	1	RH, MARKED RE500448; ORDER RE502449	
10	BALANCER SHAFT	1	LH, MARKED RE500449; ORDER RE502448	
11	R115299	BUSHING	6		
12	34M7089	DOWEL PIN	AR	4 X 12 mm, Not Illustrated	



Download the full PDF manual instantly.

Our customer service e-mail:

aservicemanualpdf@yahoo.com