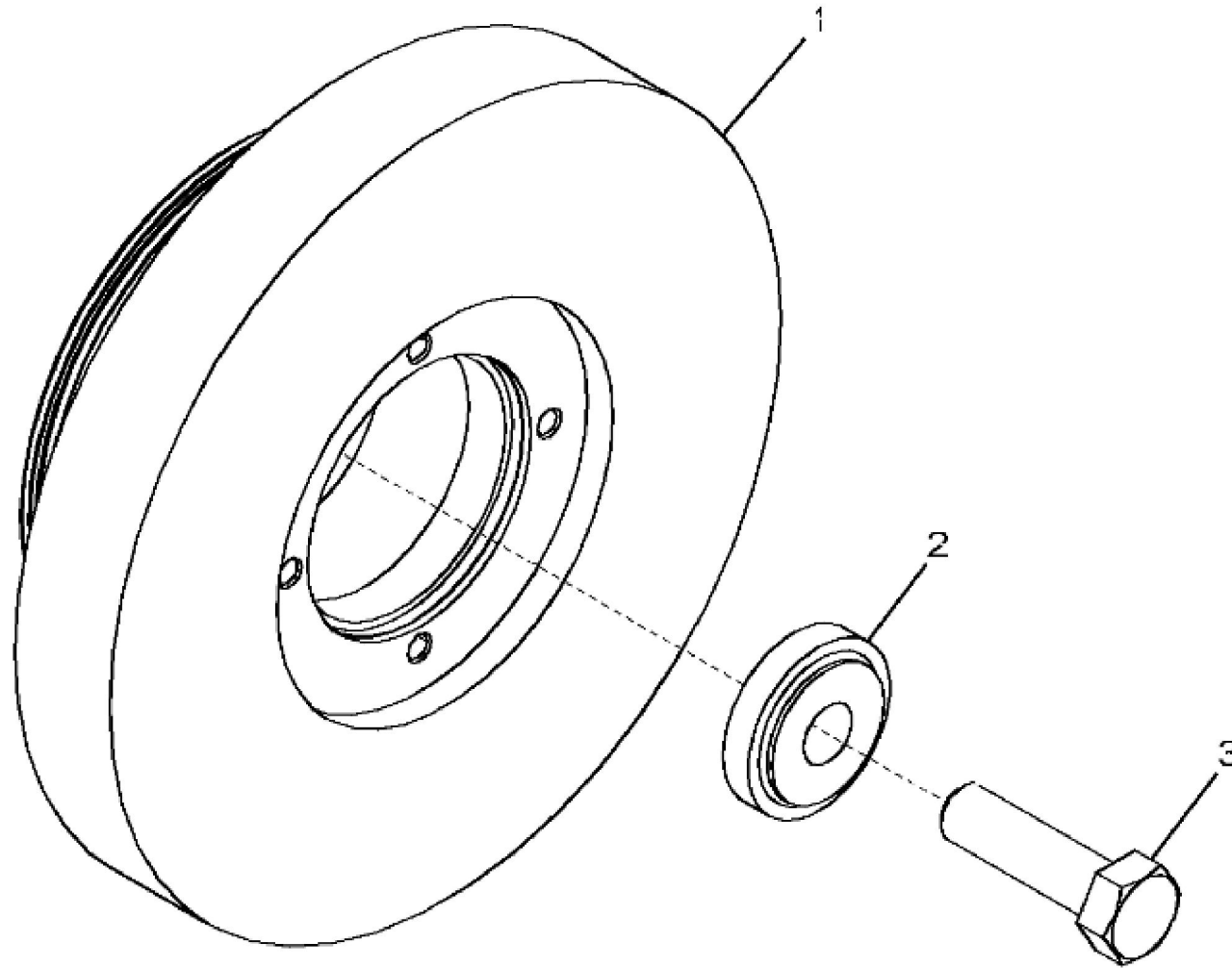


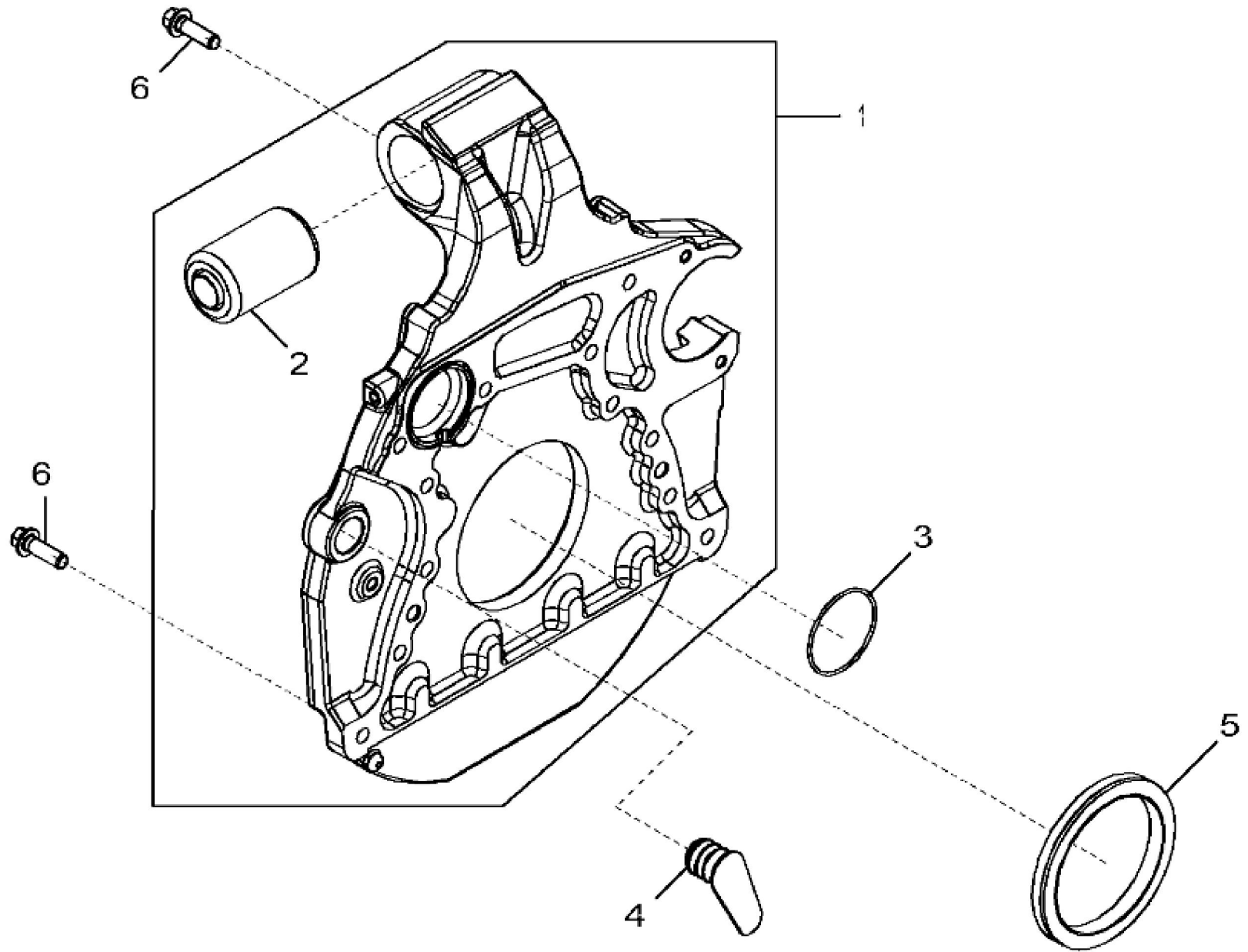
KEY	PART NO.	PART NAME	QTY	REMARKS	
1	RE555026	VALVE COVER	1	MARKED R537224; ALSO ORDER TY22462, R536108 AND R534105; SUB FOR R529152	
2	RE542918	VALVE	1		
3	19M7867	SCREW	15	M8 X 25	
4	R534105	DEFLECTOR	1	USE WITH RE555026	
4	R528408	DEFLECTOR	1	USE WITH R529152	
5	19M7775	SCREW	2	M6 X 16	
6	R528743	GASKET	1		
7	R532038	VALVE	1	USE WITH R529152	
8	R536108	HOSE	1	ORDER DZ10571	
8	DZ10571	HOSE	1		
9	TY22462	CLAMP	1		



1344_RE543930_PCD

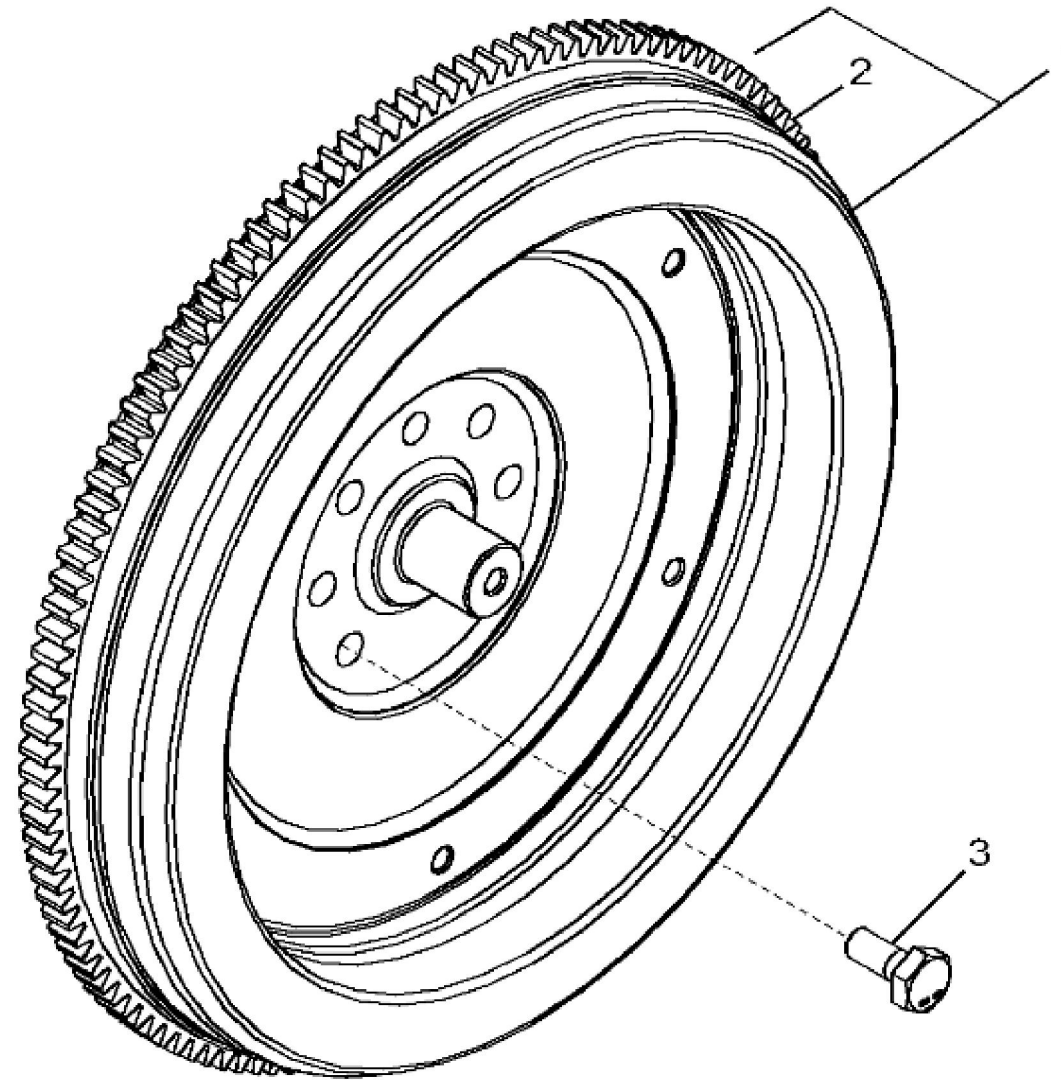
John Deere > Turf And Utility > TRACTOR > 6215R - TRACTOR > 6215R Tractor (North America Edition, Engine SN: 6068UXXXXXX)(Final Tier 4) > E1 DIESEL ENGINE 6068RW424-RE567257-ETN115183
> E100 DIESEL ENGINE 6068RW424-RE567257-ETN115183 6068RW424 > ST330764 - 1344 CRANKSHAFT PULLEY

KEY	PART NO.	PART NAME	QTY	REMARKS	
1	RE541579	PULLEY WITH DAMPENER	1		
2	R517237	BUSHING	1		
3	R516648	CAP SCREW	1	M20 X 70	



John Deere > Turf And Utility > TRACTOR > 6215R - TRACTOR > 6215R Tractor (North America Edition, Engine SN: 6068UXXXXXX)(Final Tier 4) > E1 DIESEL ENGINE 6068RW424-RE567257-ETN115183
> E100 DIESEL ENGINE 6068RW424-RE567257-ETN115183 6068RW424 > ST572875 - 1448 FLYWHEEL HOUSING

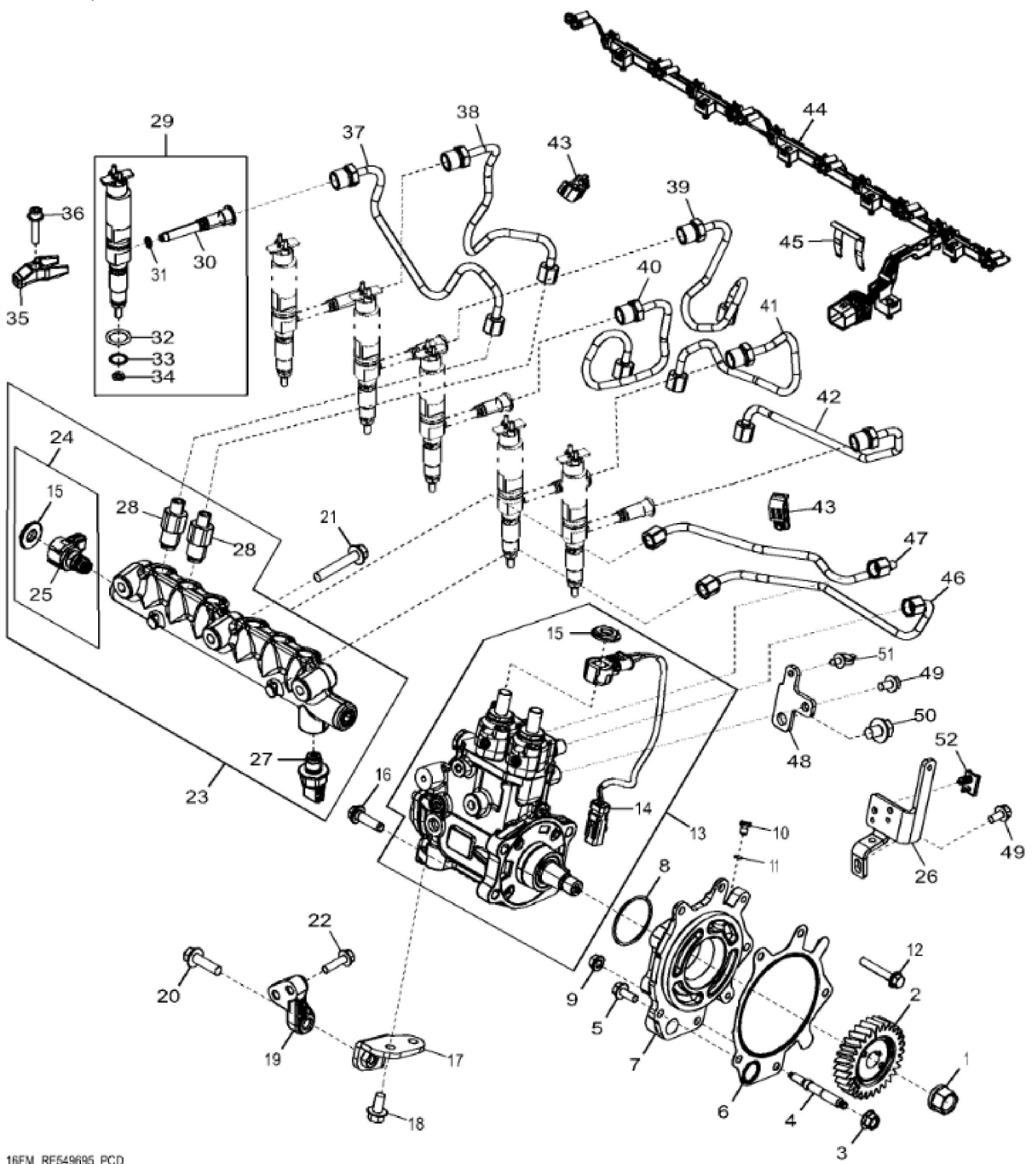
KEY	PART NO.	PART NAME	QTY	REMARKS	
1	RE565739	HOUSING	1	MARKED R543631; SUB FOR RE556605 OR RE544942	
2	ISOLATOR	1	ORDER RE565739	
3	R61467	O-RING	1		
4	R520982	PLUG	1		
5	RE524227	SEAL	1	SUB FOR APPL RE537070	
6	R135918	BOLT	12		



1593_RE526325_PCD

John Deere > Turf And Utility > TRACTOR > 6215R - TRACTOR > 6215R Tractor (North America Edition, Engine SN: 6068UXXXXXX)(Final Tier 4) > E1 DIESEL ENGINE 6068RW424-RE567257-ETN115183
> E100 DIESEL ENGINE 6068RW424-RE567257-ETN115183 6068RW424 > ST275123 - 1593 FLYWHEEL

KEY	PART NO.	PART NAME	QTY	REMARKS	
1	RE526326	FLYWHEEL	1	MARKED R521313	
2	R28811	RING GEAR	1	Z = 129; ID = 385 mm	
3	R522205	CAP SCREW	6	(One Time Usage) M12 X 30	



KEY	PART NO.	PART NAME	QTY	REMARKS
1	14M7332	FLANGE NUT	1	M18
2	R544003	GEAR	1	Z = 30, MARKED R545201; SUB FOR APPL R539039
3	14M7296	FLANGE NUT	3	M10
4	R520139	STUD	3	
5	RE67238	SCREW	2	SUB FOR RE534333
6	R534204	GASKET	1	
7	R539044	ADAPTER	1	MARKED R539097
8	R516125	O-RING	1	
9	14M7298	FLANGE NUT	3	M8
10	64M1014	DRAIN PLUG	1	
11	51M7052	O-RING	1	6.071 X 1.626 mm
12	19M7800	SCREW	2	M8 X 50
13	RE564861	FUEL PUMP	1	SUB FOR RE549623
14	RE569728	ELEC. CONNECTOR TERMINAL	1	
15	R536041	NUT	3	
16	R500394	SCREW	4	
17	RE553171	BRACKET	1	
18	19M7784	SCREW	2	M10 X 20
19	R534206	BRACKET	1	MARKED R536405
20	19M7835	SCREW	1	M10 X 35
21	19M7807	SCREW	3	M10 X 60
22	19M7868	SCREW	2	M8 X 30
23	RE549624	FUEL RAIL	1	
24	RE549511	PRESSURE RELIEF FITTING	1	
25	RE553523	ELEC. CONNECTOR TERMINAL	1	
26	R546514	BRACKET	1	
27	RE549752	PRESSURE SENSOR	1	
28	RE554865	FLOW CONTROL HYD. VALVE	6	
29	RE557023	NOZZLE KIT	6	
30	RE549731	TUBE	6	
31	R63548	O-RING	6	
32	R505452	O-RING	6	
33	R74354	O-RING	6	
34	R131051	WASHER	6	

KEY	PART NO.	PART NAME	QTY	REMARKS	
35	R522417	CLAMP	6		
36	RE528096	SCREW WITH WASHER	6		
37	DZ101186	FUEL LINE	1	SUB FOR RE549625	
38	DZ101185	FUEL LINE	1	SUB FOR RE549619	
39	DZ101183	FUEL LINE	1	SUB FOR RE549618	
40	DZ101182	FUEL LINE	1	SUB FOR RE549617	
41	DZ101178	FUEL LINE	1	SUB FOR RE549616	
42	DZ101179	FUEL LINE	1	SUB FOR RE549615	
43	RE553626	CLAMP	4		
44	RE558155	WIRING HARNESS	1		
45	R528718	CLIP	1		
46	RE549626	FUEL LINE	1		
47	RE549627	FUEL LINE	1		
48	R543542	BRACKET	1		
49	19M7865	SCREW	2	M8 X 16	
50	19M8242	SCREW	1	M12 X 16	
51	RE258807	TIE BAND	2		
52	57M9940	ELEC. CONNECTOR ACCESSORY	2		



Download the full PDF manual instantly.

Our customer service e-mail:

aservicemanualpdf@yahoo.com