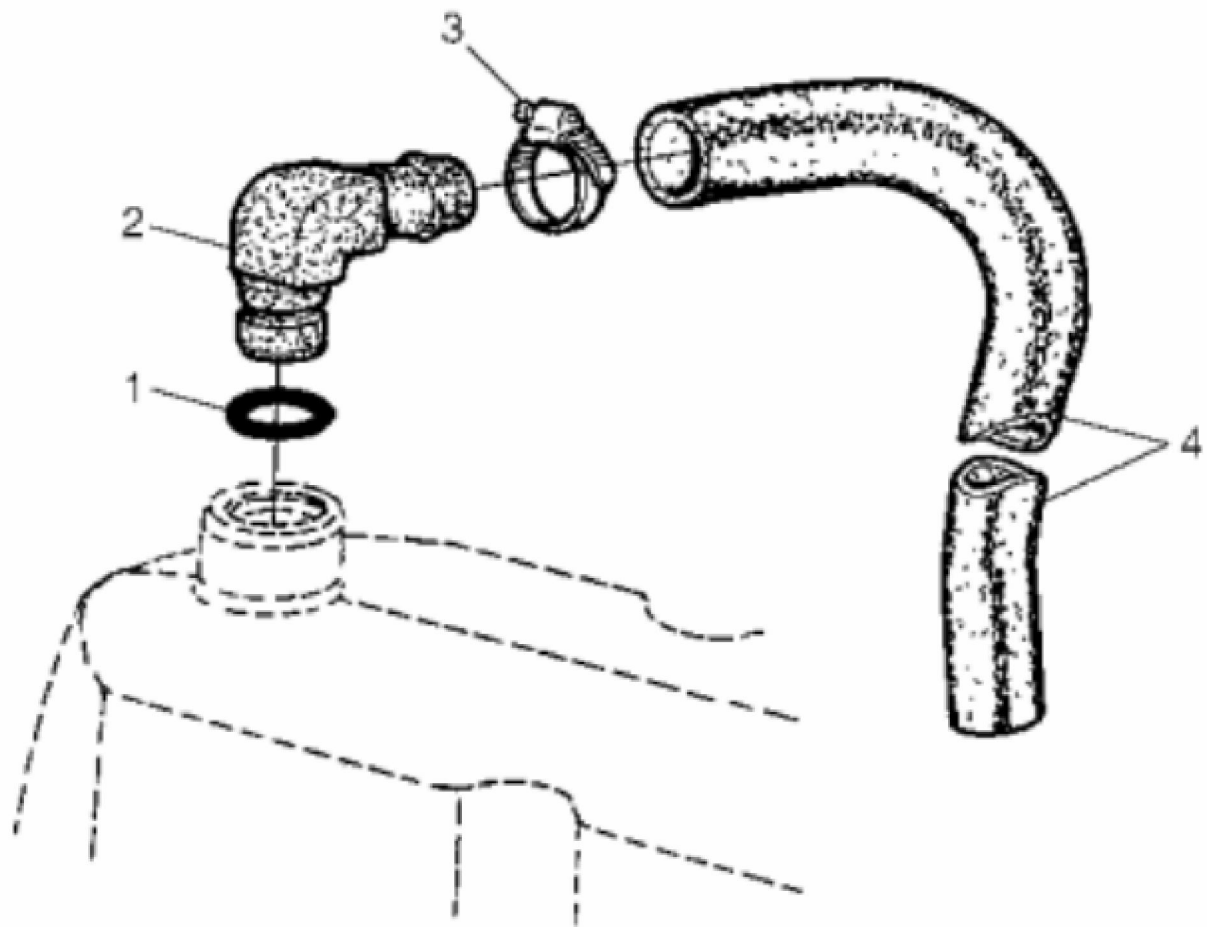
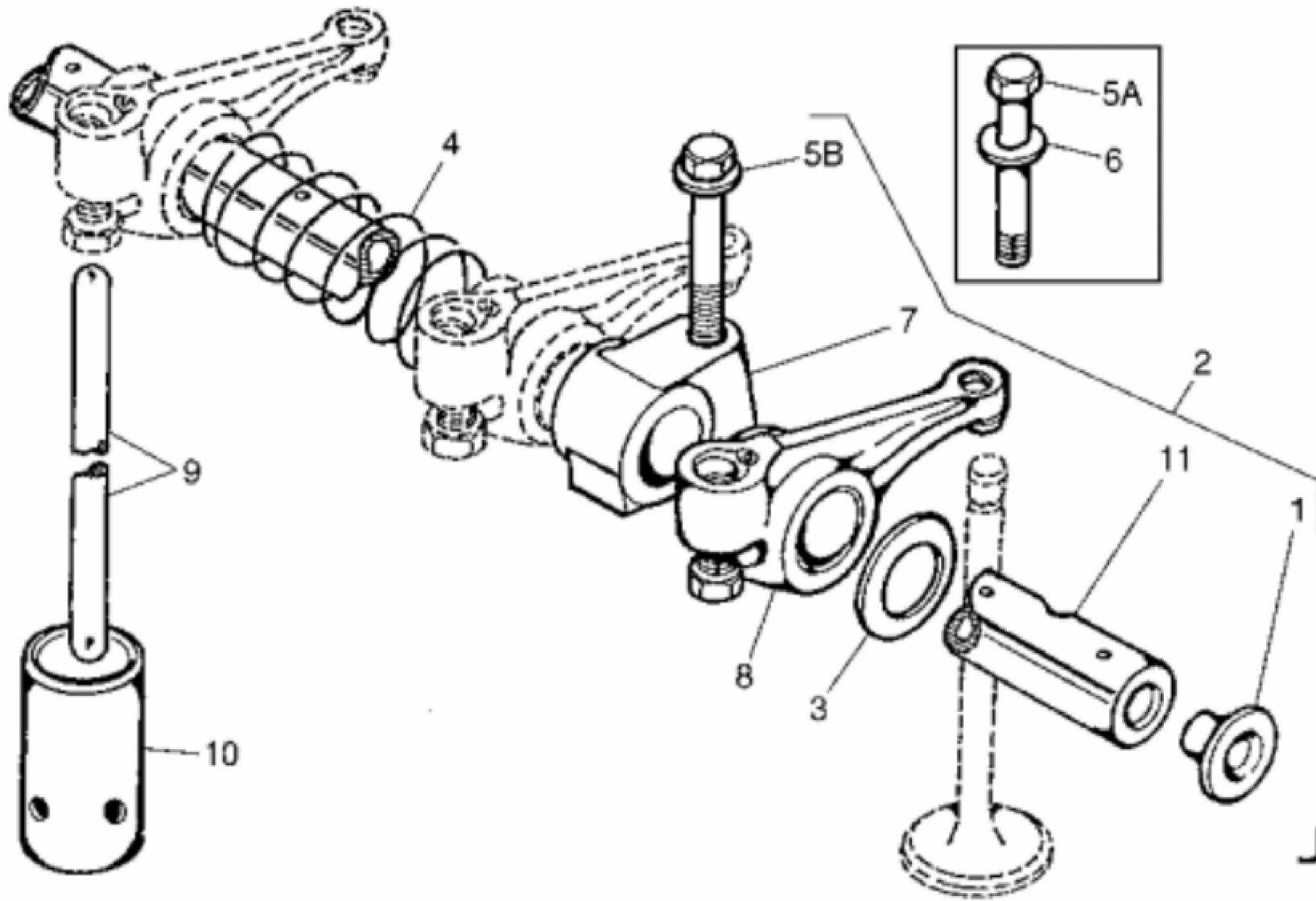


KEY	PART NO.	PART NAME	QTY	REMARKS	
1	R130942	MEDALLION	1		
2	RE32140	SCREW WITH WASHER	6		
3	RE44202	VALVE COVER	1		
4	R106796	GASKET	1	(CUT TO LENGTH)	



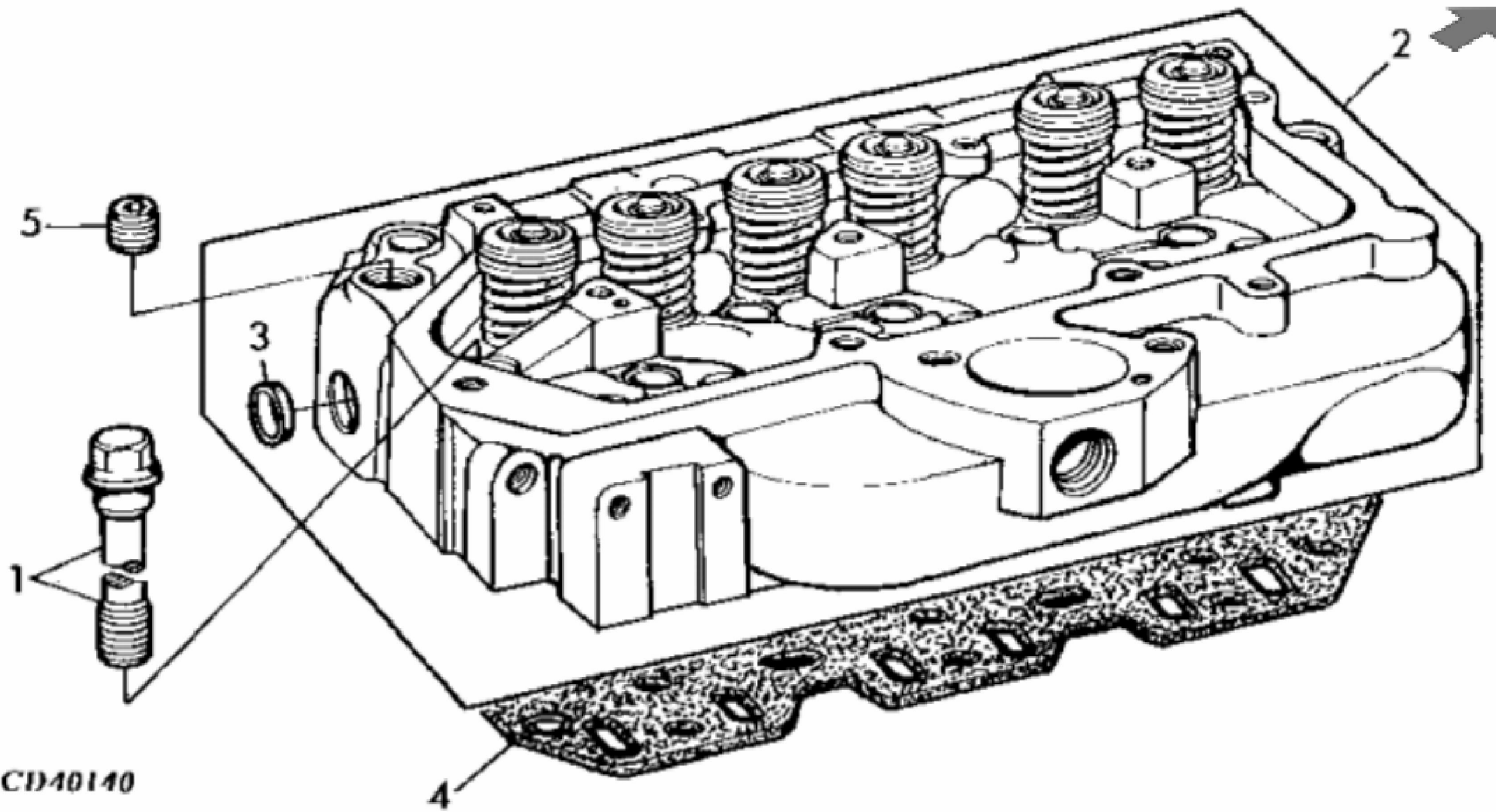
RGP5475

KEY	PART NO.	PART NAME	QTY	REMARKS	
1	R56463	O-RING	1		
2	R92154	ELBOW FITTING	1		
3	AT18904	CLAMP	1		
4	TY22450	BULK HOSE	1	889MM (35"), (CUT TO LENGTH)	



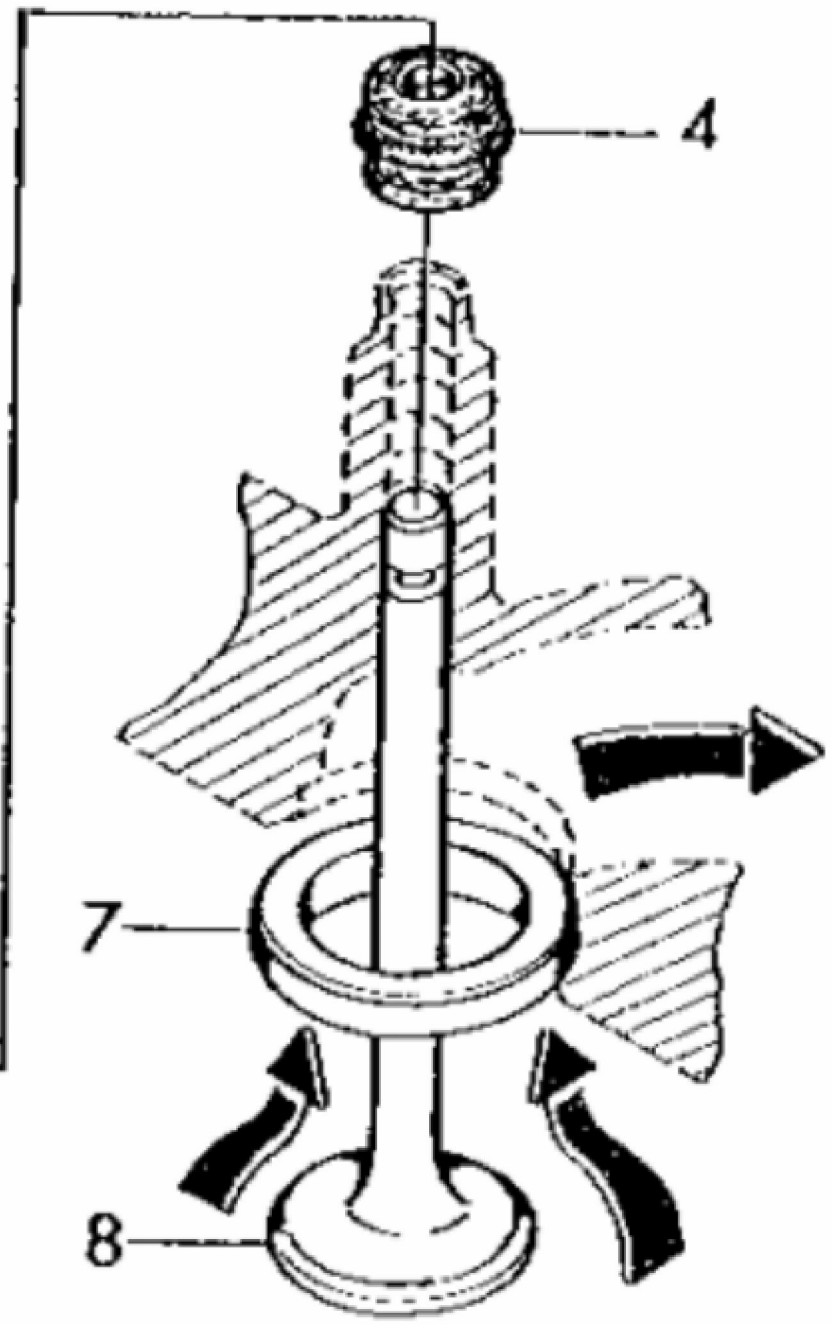
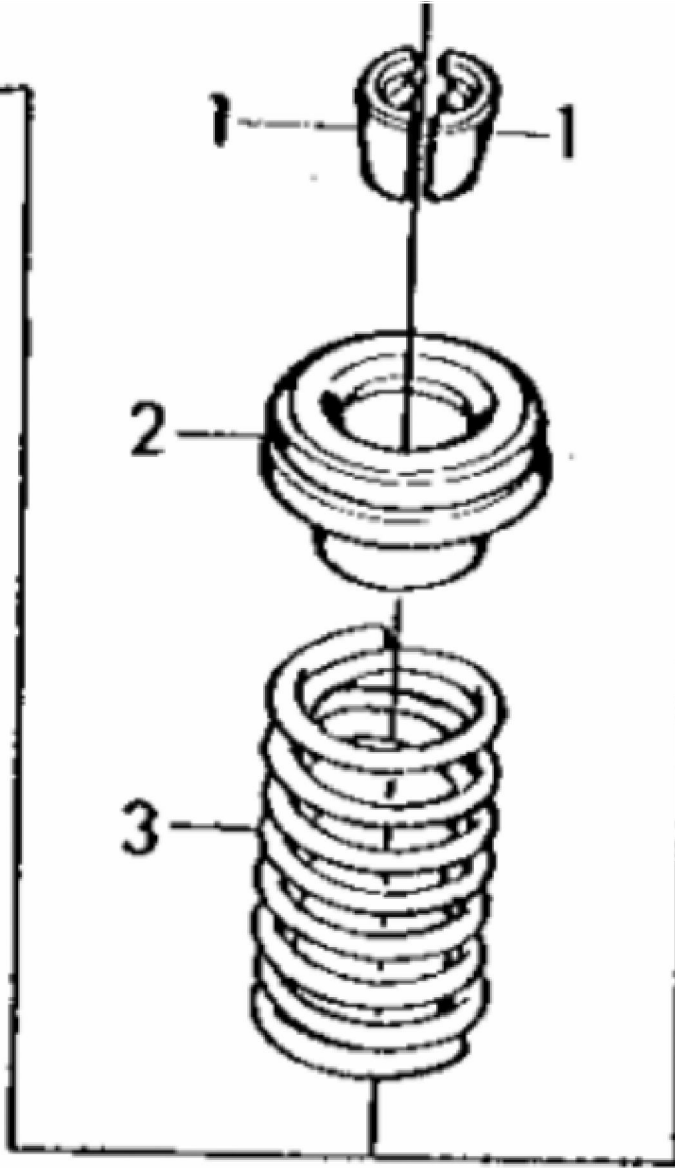
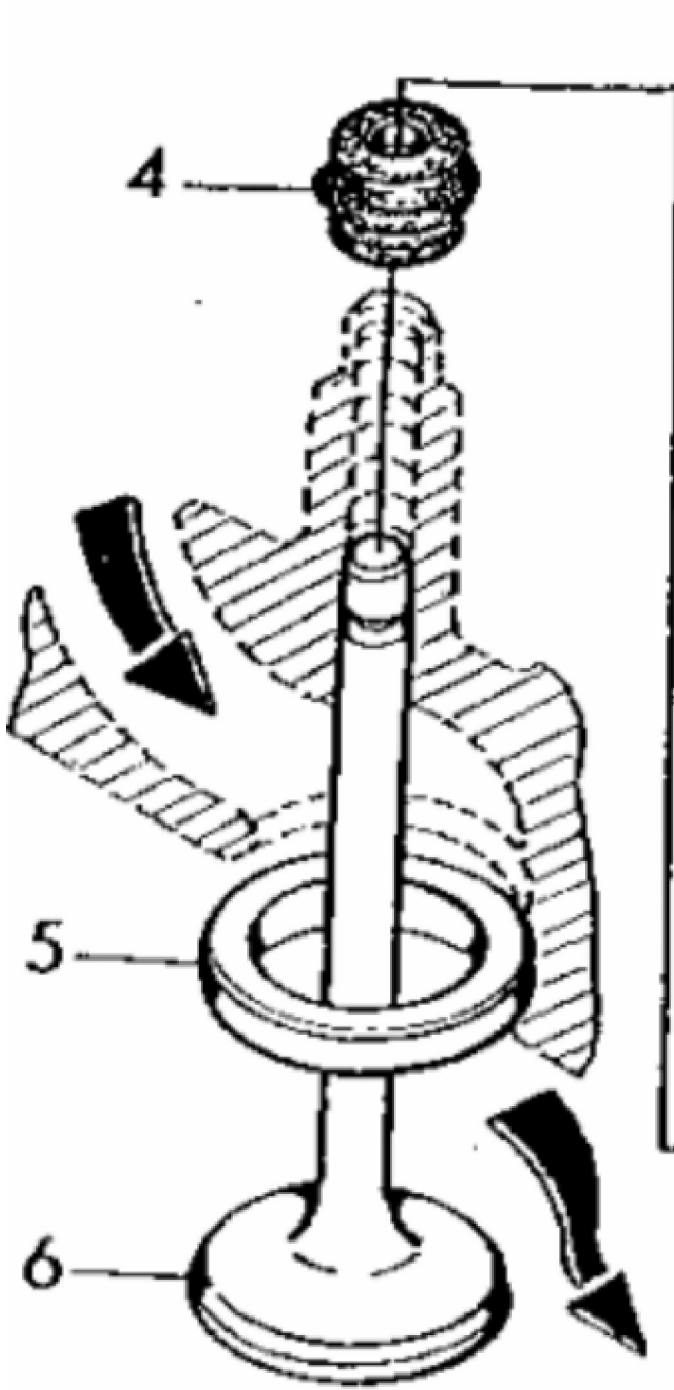
JOHN DEERE
RGP8910

KEY	PART NO.	PART NAME	QTY	Engine Serial No.	REMARKS
1	R54565	PLUG	2		
2	RE502875	ROCKER ARM SHAFT	1	____-XXXXXX	NLA (SUB FOR DD12119) (SUB RE519735, THIS APPLICATION, (6) R515095 AND (6) R518454)
2	RE519735	ROCKER ARM SHAFT	1	XXXXXX-____	
3	T20316	WASHER	2		
4	T20314	SPRING	2		
5A	19H3031	CAP SCREW	3	____-XXXXXX	3/8" X 2-1/2", (USE WITH T20315)(HS, SAE 8)
5B	R504813	SELF-LOCKING SCREW	3	XXXXXX-____	(USE WITH R123161)
6	R42729	WASHER	3	____-XXXXXX	(USE WITH 19H3031)
7	T20315	SUPPORT	3	____-XXXXXX	NLA(SUB R123161 AND R504813)
7	R123161	SUPPORT	3	XXXXXX-____	
8	RE31973	ROCKER ARM	6	____-XXXXXX	NLA (SUB RE508317, THIS APPLICATION, R515095 AND R518454)
8	RE508317	ROCKER ARM	6	XXXXXX-____	(ALSO ORDER R518454)
9	R82896	PUSH ROD	6	____-XXXXXX	234MM, (SUB FOR T20310, THIS APPLICATION) (USE WITH RE31973)
9	R515095	PUSH ROD	6	XXXXXX-____	229.33 MM, (USE WITH RE508317)
10	T20073	CAM FOLLOWER	6		
11	R501532	SHAFT	1	XXXXXX-____	
..	R518454	NUT	6	XXXXXX-____	



CD40140

KEY	PART NO.	PART NAME	QTY	REMARKS	
1	R85363	CAP SCREW	14		
2	RE65214	CYLINDER HEAD	1	(MARKED R129305) (SUB FOR RE65215)	
2	RE65215	CYLINDER HEAD	1	(ORDER RE65214)	
2	SE501578	CYLINDER HEAD REMAN	1	(REMAN FOR RE65215)	
3	CD16284	PLUG	2		
4	R97356	ENGINE CYLINDER HEAD GASKET	1		
5	T58477	FITTING PLUG	NA	1/2"-14NPT	



CD37204

KEY	PART NO.	PART NAME	QTY	REMARKS	
1	R91889	RETAINER	16	OD 11.7MM	
2	RE60005	ROTATOR	8		
3	R26125	SPRING	8		
4	RE31617	SEAL	8	STD	
5	R106831	VALVE SEAT INSERT	4	(INTAKE) OD 47.22MM, (SUB FOR R106830)	
6	R98062	INTAKE VALVE	4	OD STD	
6	R97490	INTAKE VALVE	AR	OD +0.381 MM (0.015")	
6	R97491	INTAKE VALVE	AR	OD +0.762 MM (0.03")	
7	R106829	VALVE SEAT INSERT	4	(EXHAUST) OD 43.1MM, (SUB FOR R106828)	
8	R90692	EXHAUST VALVE	4	OD STD	
8	R97492	EXHAUST VALVE	AR	OD +0.381 MM (0.015")	
8	R97493	EXHAUST VALVE	AR	OD +0.762 MM (0.03")	



Download the full PDF manual instantly.

Our customer service e-mail:

aservicemanualpdf@yahoo.com