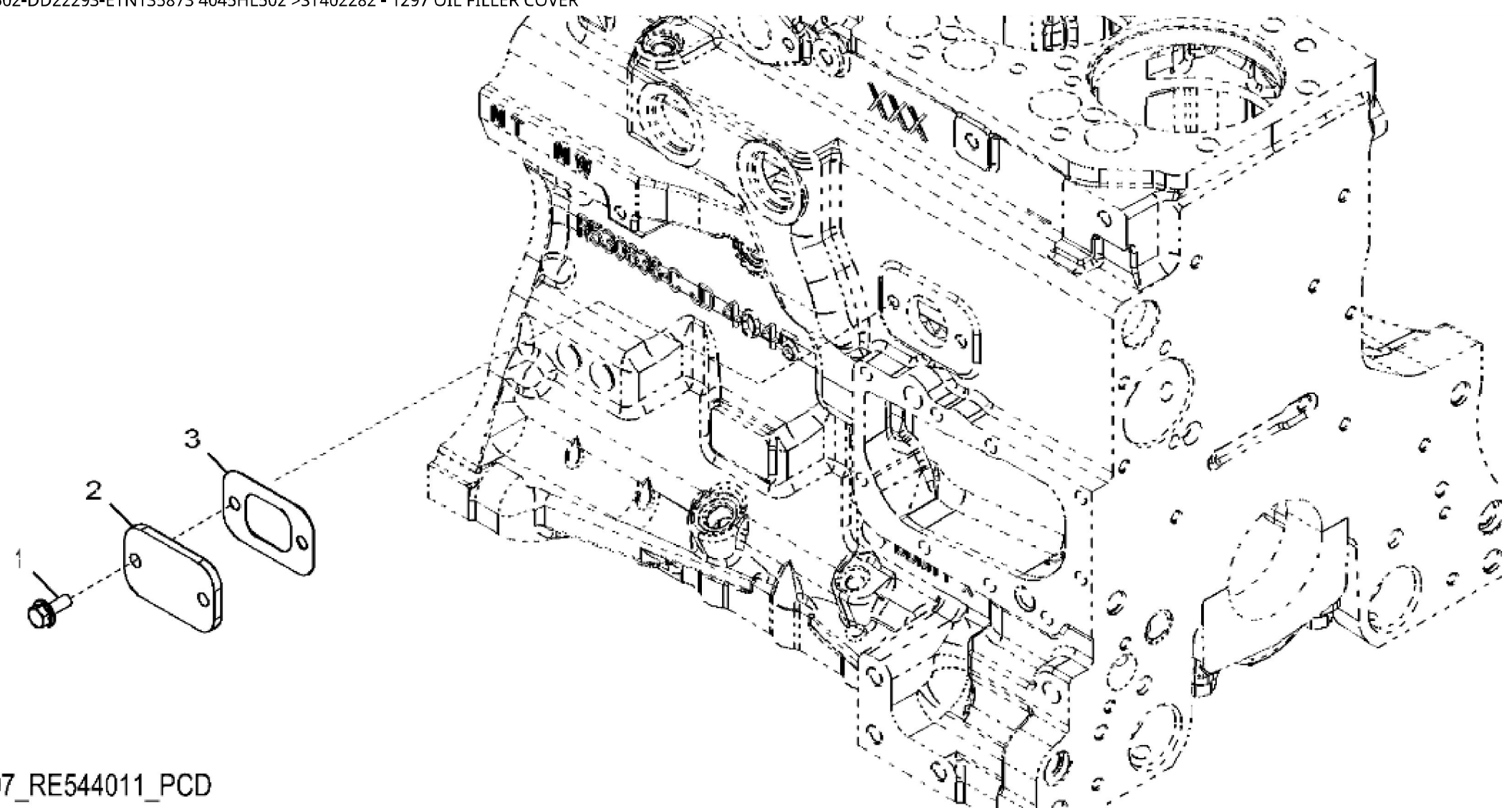


John Deere > Turf And Utility >TRACTOR >6115RC - TRACTOR >6115RC Tractor (Europe Edition, Engine SN: 4045UXXXXXX)(Final Tier 4) >EN ENGINE 4045HL502-DD22293-ETN135873 >EN00 ENGINE 4045HL502-DD22293-ETN135873 4045HL502 >ST400926 - 1183 ROCKER ARM COVER

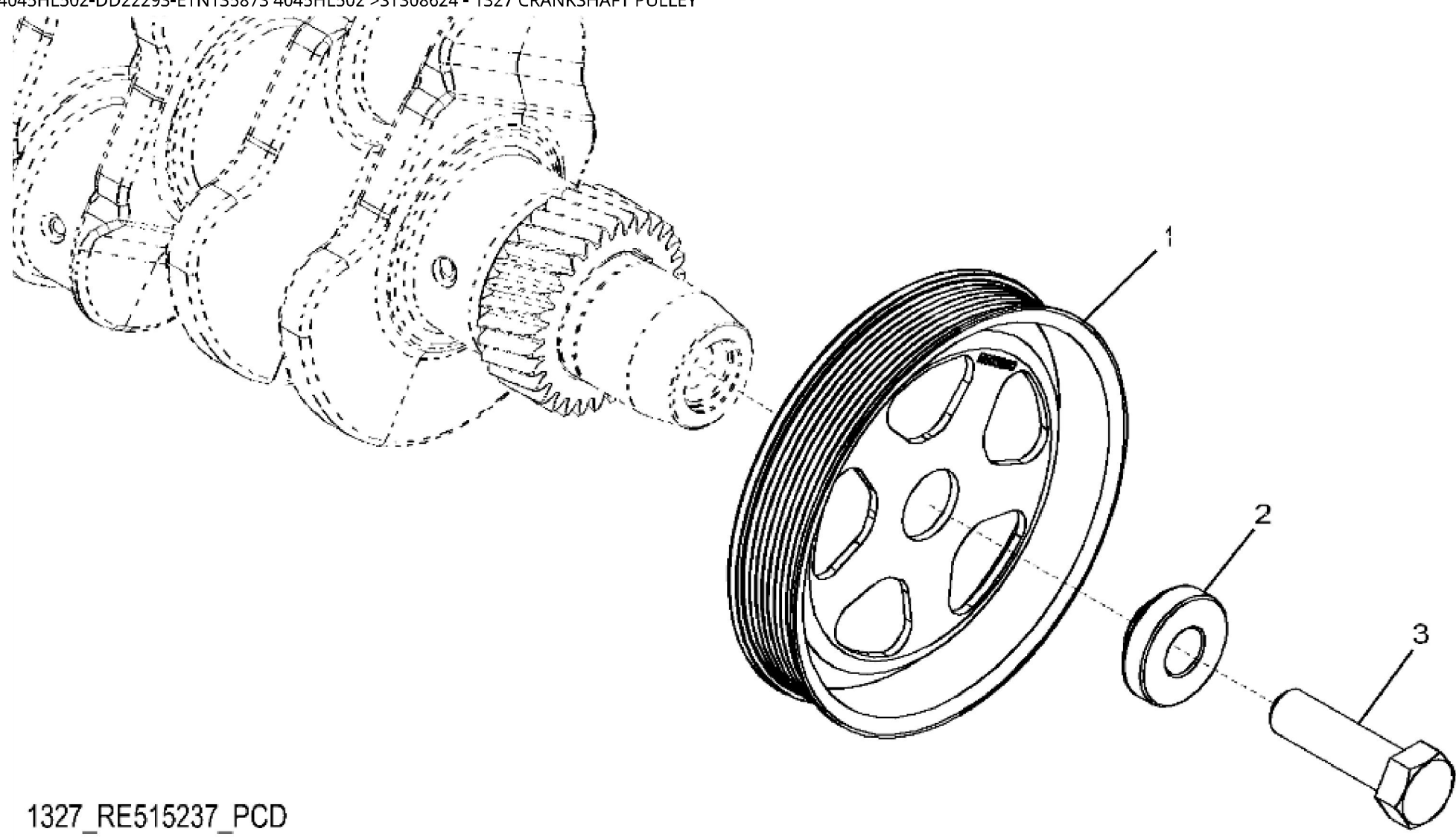
| KEY | PART NO. | PART NAME   | QTY | REMARKS                          |  |
|-----|----------|-------------|-----|----------------------------------|--|
| 1   | R524499  | GASKET      | 1   |                                  |  |
| 2   | 19M7775  | SCREW       | 2   | M6 X 16                          |  |
| 3   | R515555  | DEFLECTOR   | 1   |                                  |  |
| 4   | R543296  | HOSE        | 1   |                                  |  |
| 5   | TY22462  | CLAMP       | 1   |                                  |  |
| 6   | RE561710 | VALVE COVER | 1   | MARKED R540192                   |  |
| 7   | RE542918 | VALVE       | 1   | USE WITH RE561710                |  |
| 8   | R123575  | O-RING      | 5   |                                  |  |
| 9   | R521390  | SCREW       | 5   |                                  |  |
| 10  | H23125   | PLUG        | 5   |                                  |  |
| 11  | R529614  | VALVE COVER | 1   | ORDER RE561710                   |  |
| 12  | R532038  | VALVE       | 1   | ORDER RE542918; USE WITH R529614 |  |



1297\_RE544011\_PCD

John Deere > Turf And Utility > TRACTOR > 6115RC - TRACTOR > 6115RC Tractor (Europe Edition, Engine SN: 4045UXXXXXX)(Final Tier 4) > EN ENGINE 4045HL502-DD22293-ETN135873 > EN00 ENGINE 4045HL502-DD22293-ETN135873 4045HL502 > ST402282 - 1297 OIL FILLER COVER

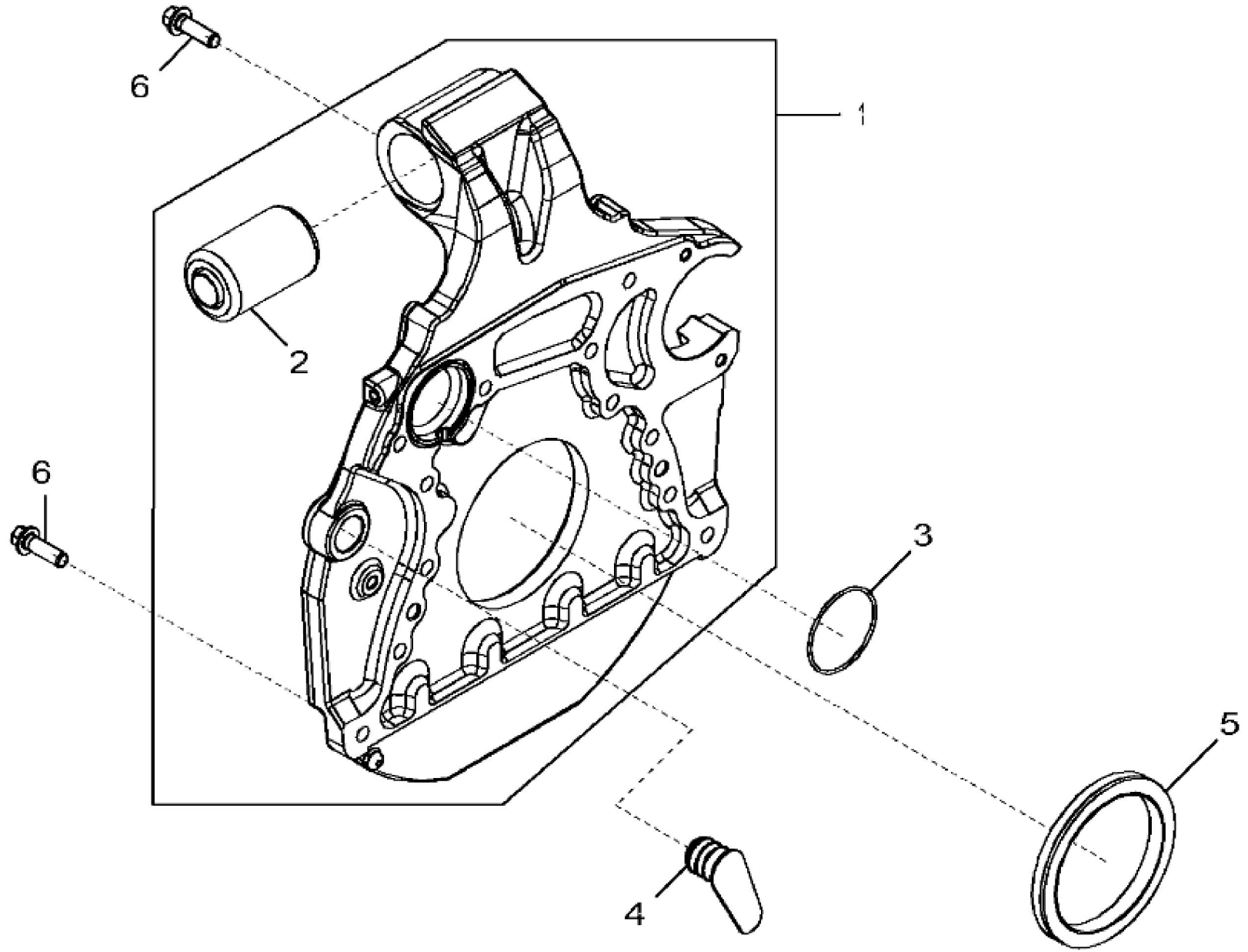
| KEY | PART NO. | PART NAME | QTY | REMARKS                            |  |
|-----|----------|-----------|-----|------------------------------------|--|
| 1   | RE67238  | SCREW     | 2   | (Threads With Pre-Applied Sealant) |  |
| 2   | R116296  | COVER     | 1   |                                    |  |
| 3   | R136495  | GASKET    | 1   |                                    |  |



1327\_RE515237\_PCD

John Deere > Turf And Utility > TRACTOR > 6115RC - TRACTOR > 6115RC Tractor (Europe Edition, Engine SN: 4045UXXXXXX)(Final Tier 4) > EN ENGINE 4045HL502-DD22293-ETN135873 > EN00 ENGINE 4045HL502-DD22293-ETN135873 4045HL502 > ST308624 - 1327 CRANKSHAFT PULLEY

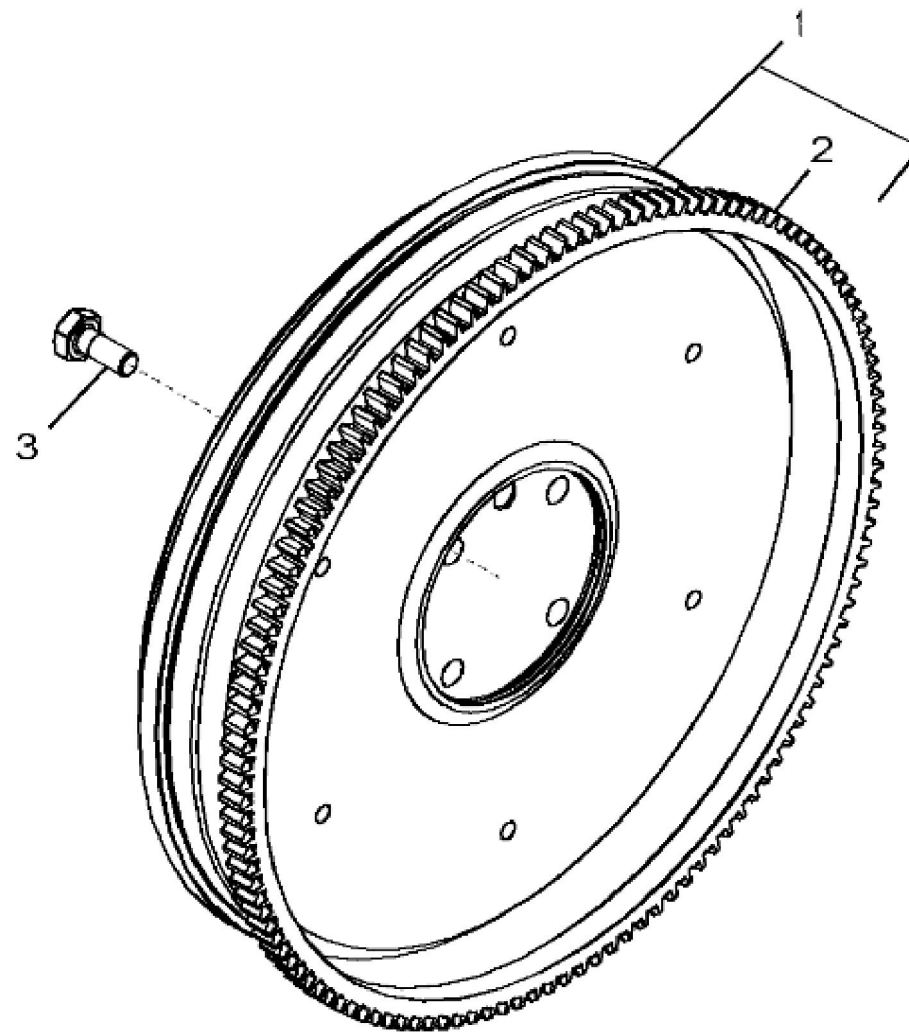
| KEY | PART NO. | PART NAME | QTY | REMARKS     |  |
|-----|----------|-----------|-----|-------------|--|
| 1   | R503880  | PULLEY    | 1   | OD = 188 mm |  |
| 2   | R515040  | BUSHING   | 1   | OD = 50 mm  |  |
| 3   | R516648  | CAP SCREW | 1   | M20 X 70    |  |



John Deere > Turf And Utility >TRACTOR >6115RC - TRACTOR >6115RC Tractor (Europe Edition, Engine SN: 4045UXXXXXX)(Final Tier 4) >EN ENGINE 4045HL502-DD22293-ETN135873 >EN00 ENGINE 4045HL502-DD22293-ETN135873 4045HL502 >ST572875 - 1448 FLYWHEEL HOUSING

| KEY | PART NO. | PART NAME | QTY | REMARKS                                      |  |
|-----|----------|-----------|-----|--|--|
| 1   | RE565739 | HOUSING   | 1   | MARKED R543631; SUB FOR RE556605 OR RE544942 |  |
| 2   | .....    | ISOLATOR  | 1   | ORDER RE565739                               |  |
| 3   | R61467   | O-RING    | 1   |  |  |
| 4   | R520982  | PLUG      | 1   |  |  |
| 5   | RE524227 | SEAL      | 1   | SUB FOR APPL RE537070                        |  |
| 6   | R135918  | BOLT      | 12  |  |  |

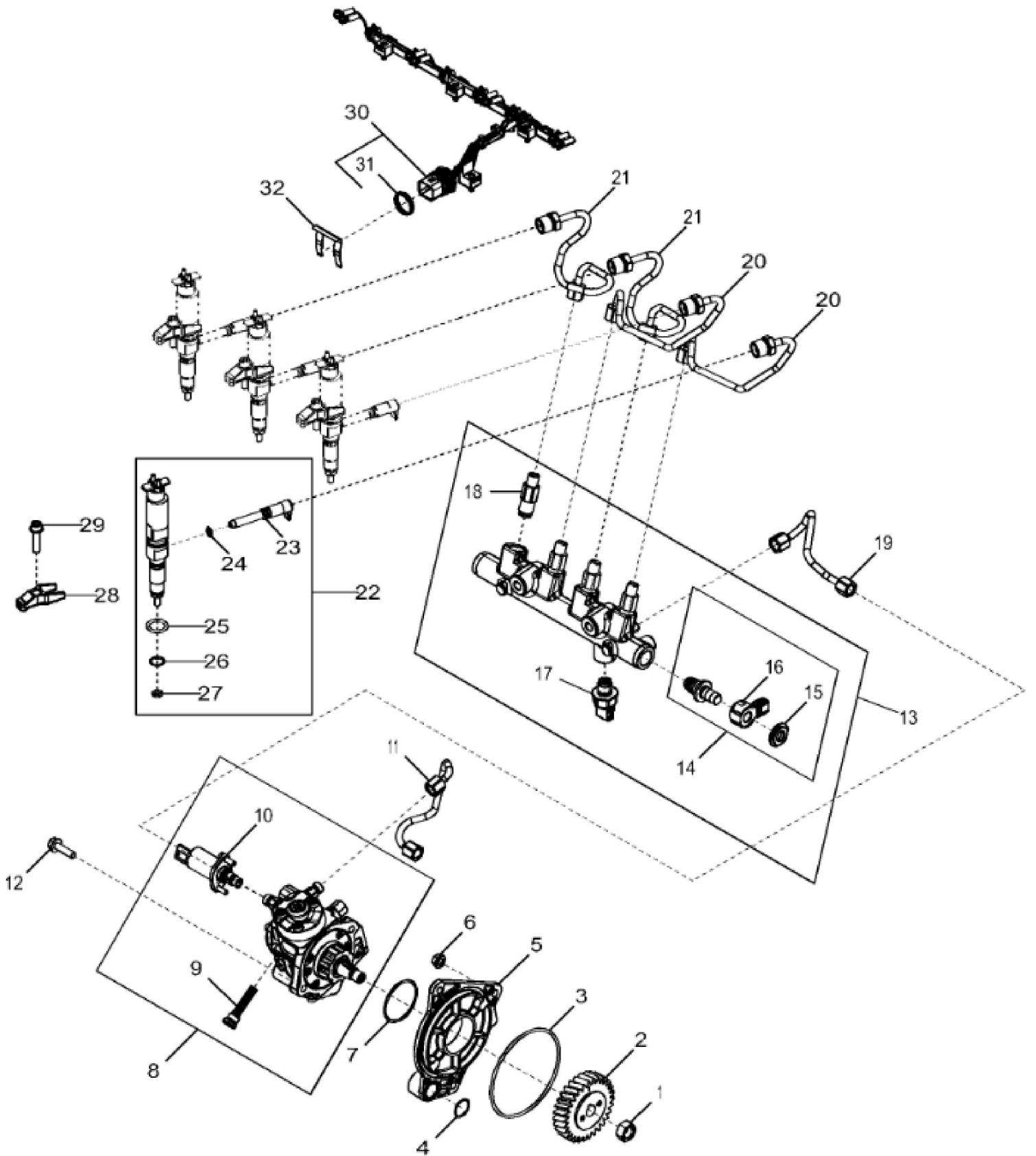




1594\_RE526323\_PCD

John Deere > Turf And Utility >TRACTOR >6115RC - TRACTOR >6115RC Tractor (Europe Edition, Engine SN: 4045UXXXXXX)(Final Tier 4) >EN ENGINE 4045HL502-DD22293-ETN135873 >EN00 ENGINE 4045HL502-DD22293-ETN135873 4045HL502 >ST275021 - 1594 FLYWHEEL

| KEY | PART NO. | PART NAME | QTY | REMARKS                   |  |
|-----|----------|-----------|-----|---------------------------|--|
| 1   | RE526324 | FLYWHEEL  | 1   |                           |  |
| 2   | R28811   | RING GEAR | 1   | ID = 385 mm; z = 129      |  |
| 3   | R522205  | CAP SCREW | 4   | (One Time Usage) M12 X 30 |  |





**Download the full PDF manual instantly.**

**Our customer service e-mail:**

**[aservicemanualpdf@yahoo.com](mailto:aservicemanualpdf@yahoo.com)**