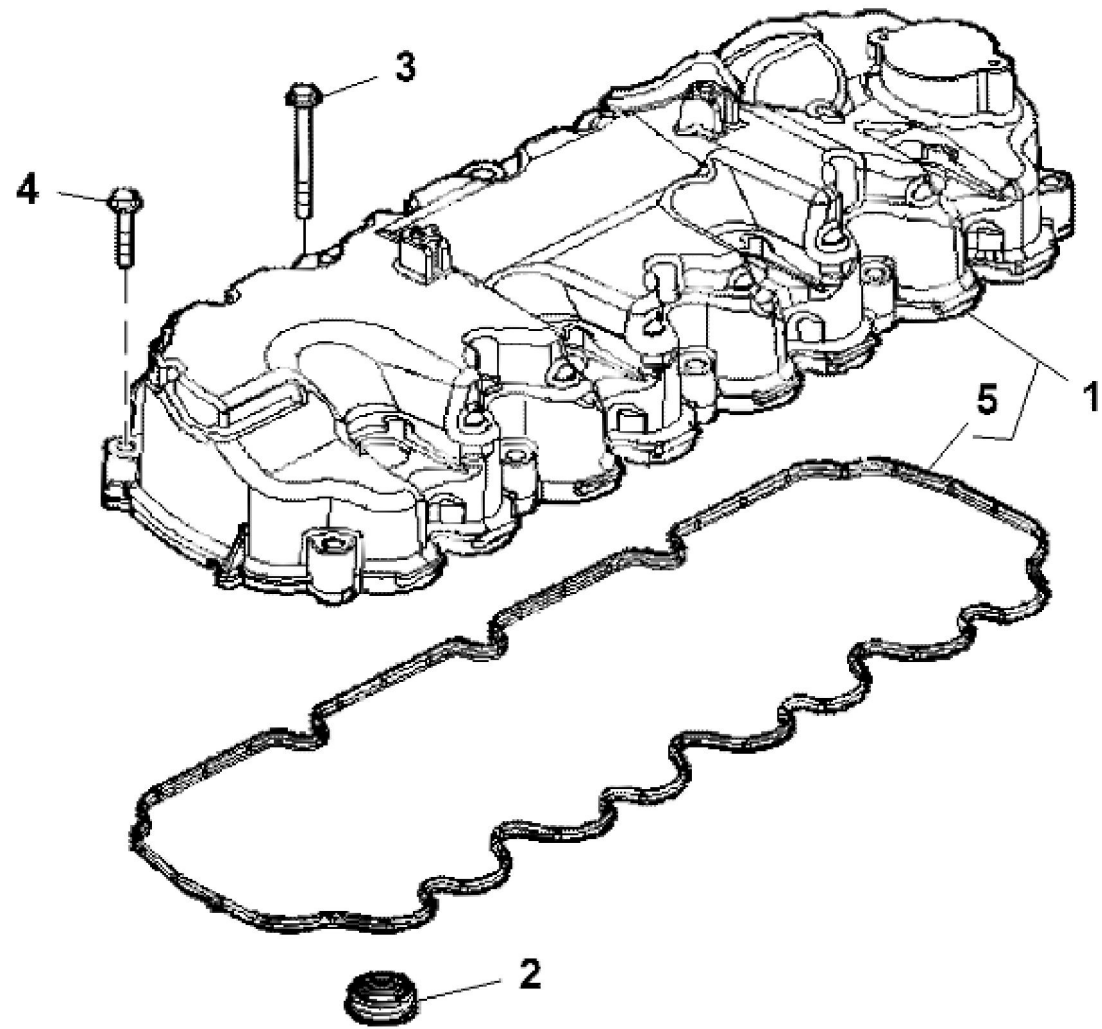


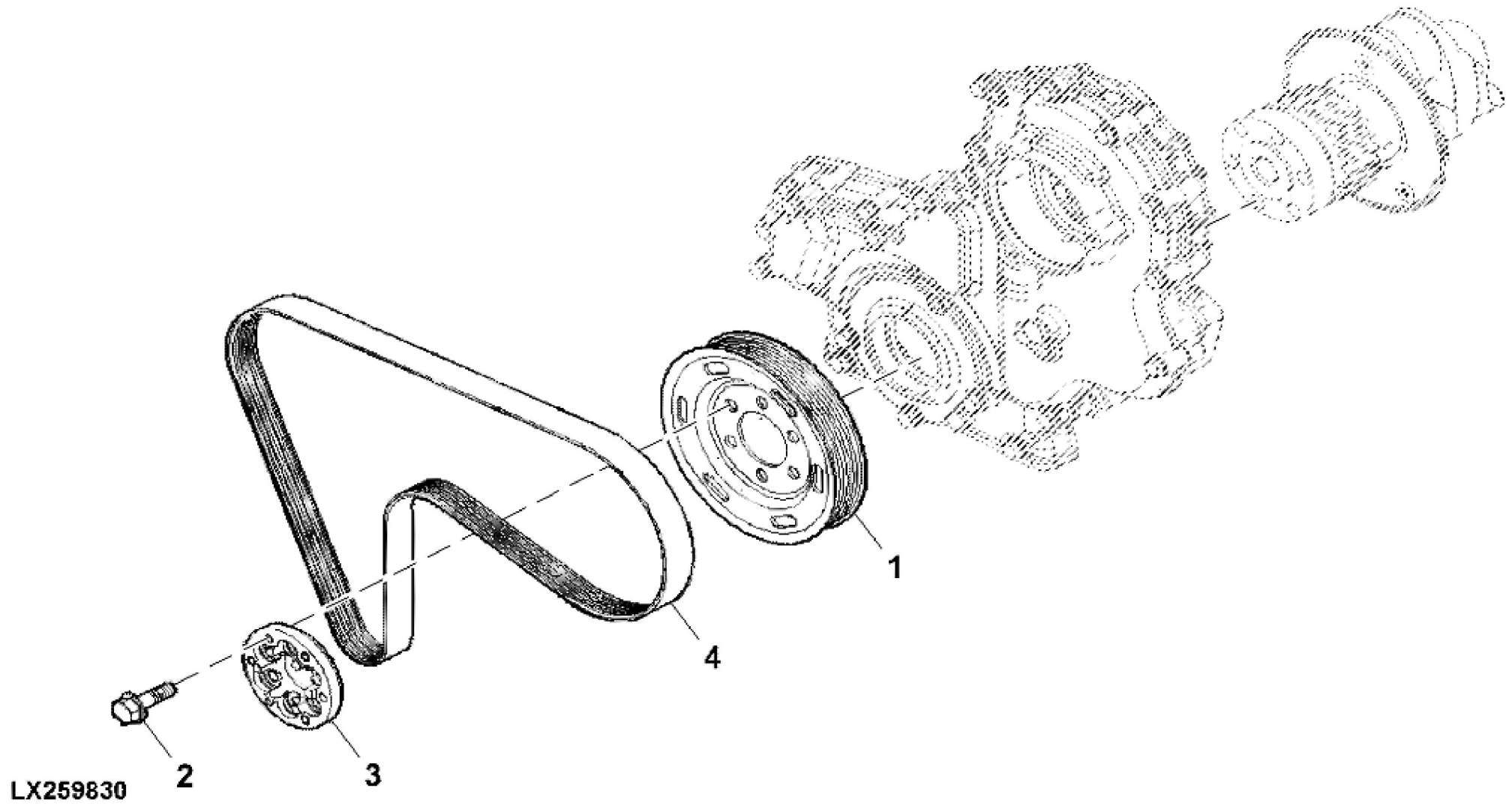
LX259820

KEY	PART NO.	PART NAME	QTY	REMARKS	
1	ER5801701355	COVER	1		
2	ER5801752064	GASKET	1		
3	ER0016592225	SCREW	4		
4	ER0016673835	SCREW	5		

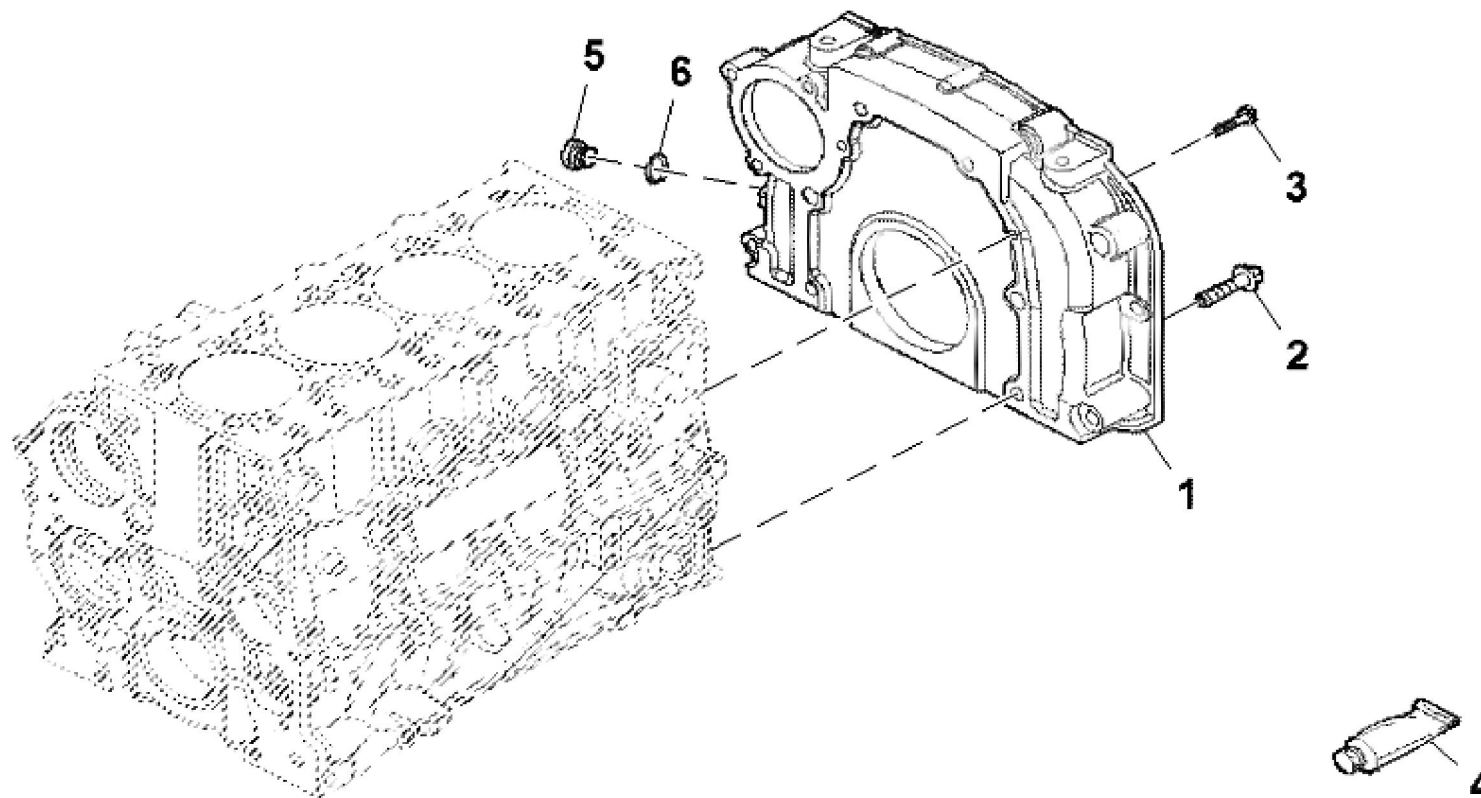


LX259821

KEY	PART NO.	PART NAME	QTY	REMARKS	
1	ER5801764433	COVER	1		
2	ER5801714865	SEALING RING	4		
3	ER0016598325	BOLT	3		
4	ER0016591725	BOLT	7		
5	ER5801714864	ENGINE CYLINDER HEAD GASKET	1		



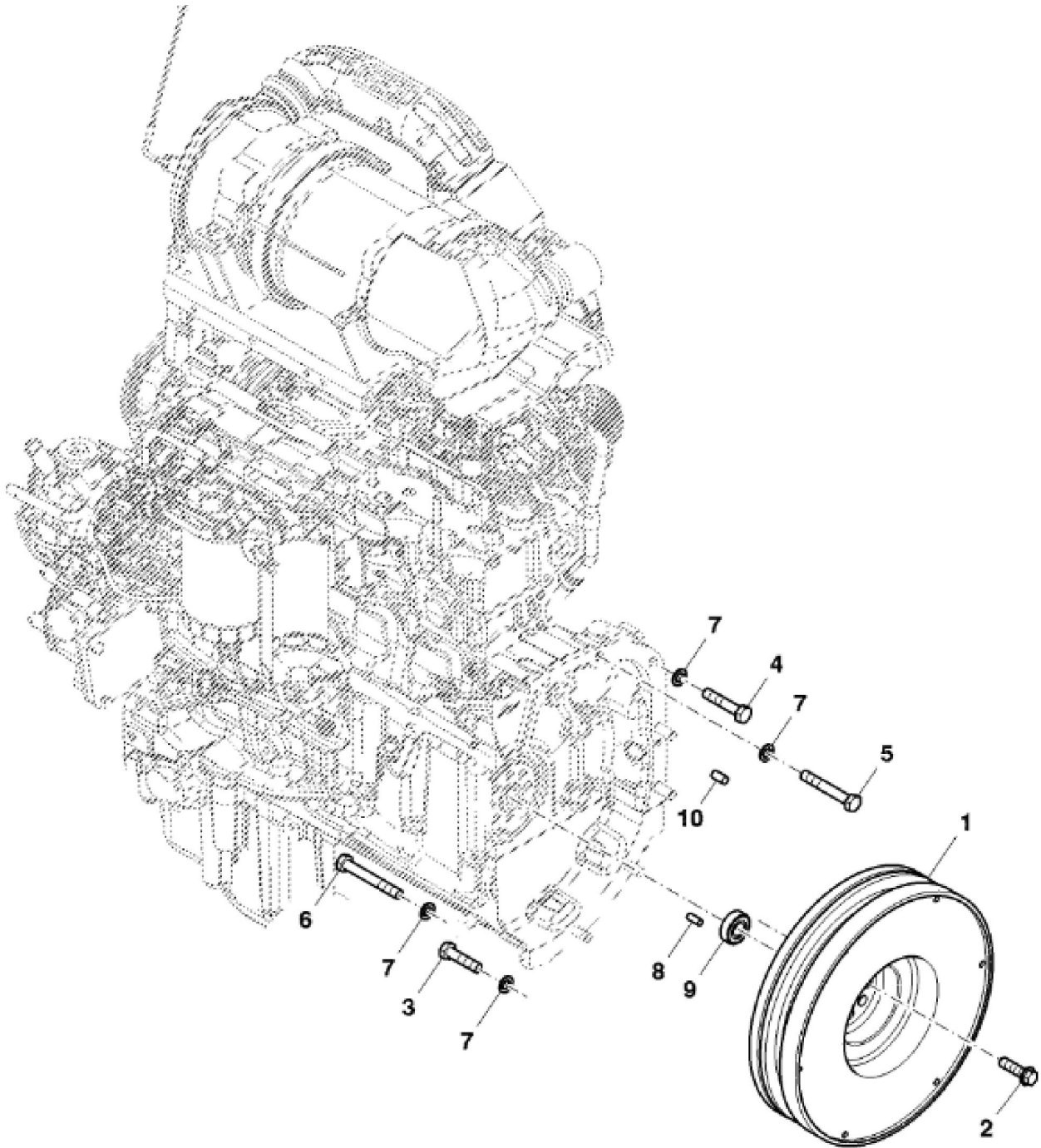
KEY	PART NO.	PART NAME	QTY	REMARKS	
1	ER5801363585	PULLEY	1		
2	ER0016675835	BOLT	6		
3	ER5801380424	SPACER	1		
4	ER5801440074	V-BELT	1		



LX259816

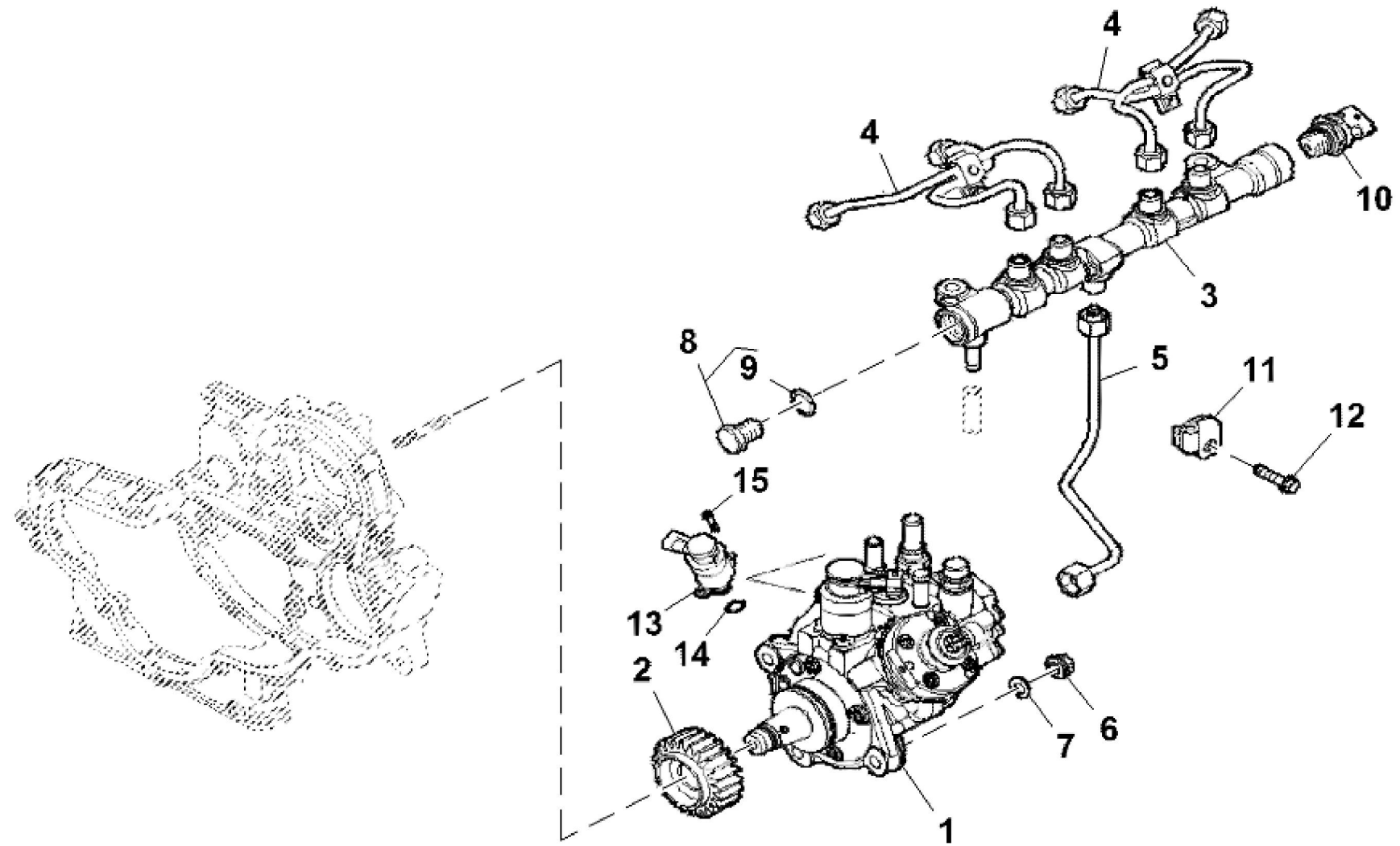
KEY	PART NO.	PART NAME	QTY	REMARKS	
1	ER0504180348	HOUSING	1		
2	ER0016678034	BOLT	6		
3	ER0016673735	BOLT	2		
4	ER0002995644	ADHESIVE	1		
5	ER0004895378	PLUG	1		
6	ER0017288480	O-RING	1		





LX245582

KEY	PART NO.	PART NAME	QTY	REMARKS	
1	ER372511	FLYWHEEL	1	(PowrReverser™) 11"	
1	ER436582	FLYWHEEL	1	(Mechanical Transmission) 12"	
2	ER393149	SELF-LOCKING SCREW	8	M12 X 42.5	
3	ER021143	SCREW	6	M12 X 50	
4	ER021148	SCREW	2	M12 X 60	
5	ER021155	SCREW	2	M12 X 80	
6	ER021157	BOLT	2	M12 X 90	
7	ER022861	WASHER	12		
8	ER024502	PIN	1		
9	ER026017	BEARING	1	(Mechanical Transmission)	
10	ER202960	DOWEL PIN	2		



LX259833



**Download the full PDF manual instantly.**

**Our customer service e-mail:**

**[aservicemanualpdf@yahoo.com](mailto:aservicemanualpdf@yahoo.com)**