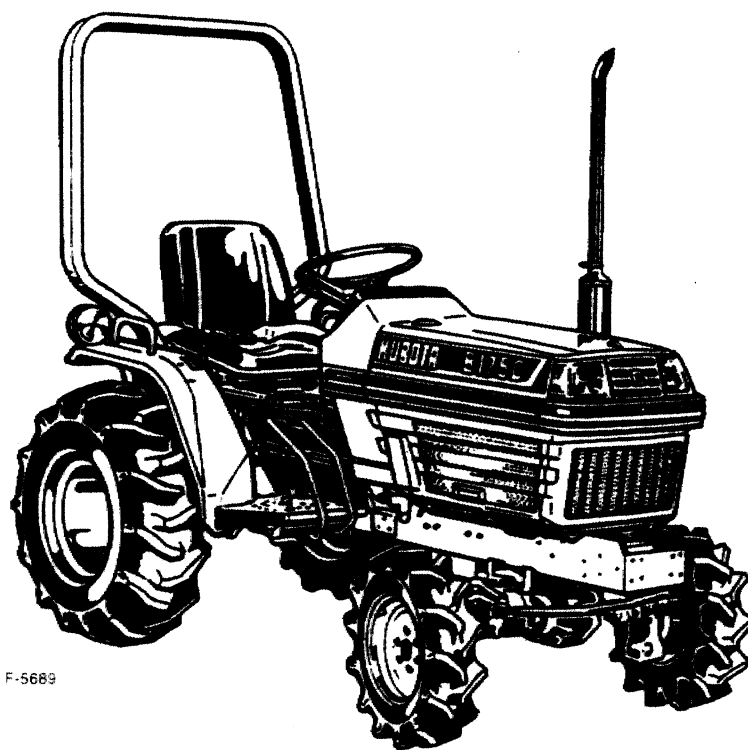


OPERATOR'S MANUAL

KUBOTA TRACTOR

**MODELS B1550HST
 B1750HST**



F-5689

READ AND SAVE THIS MANUAL

Kubota

FOREWORD

You are now the proud owner of a KUBOTA Tractor. This tractor is a product of KUBOTA quality engineering and manufacturing. It is made of the finest materials and under rigid quality control system. It will give you long, satisfactory service. To obtain the best use of your tractor, please read this manual carefully. It will help you become familiar with the operation of the tractor and contains many helpful hints about tractor maintenance. It is KUBOTA's policy to utilize as quickly as possible every advance in our research. The immediate use of new techniques in the manufacture of products may cause some small parts of this manual to be outdated. KUBOTA distributors and dealers will have the most up-to-date information. Please do not hesitate to consult with them.



SAFETY FIRST

This symbol, the industry's "Safety Alert Symbol", is used throughout this manual and on labels on the tractor itself to warn of the possibility of personal injury. Read these instructions carefully. It is essential that you read the instructions and safety regulations before you attempt to assemble or use this unit.

CONTENTS

▲ Safe Operation	1	10. Check and Maintenance	32
1. Servicing of Tractor	6	10.1 Fuel.....	32
2. Specifications	7	10.2 Engine Oil.....	33
2.1 Specification table.....	7	10.3 Transmission Fluid.....	34
2.2 Traveling speeds.....	9	10.4 Changing Front Axle Differential Case Oil (4WD).....	35
3. Implement Limitations	10	10.5 Changing Front Axle Gear Case Oil (Right and Left) (4WD).....	36
4. Operating New Tractor	12	10.6 Steering Gear Box Oil.....	36
4.1 Loading and Unloading.....	12	10.7 Oiling and Greasing Points before Starting.....	36
5. Instrument Panel and Controls	13	10.8 Radiator.....	38
5.1 Switches.....	13	10.9 Air Cleaner.....	39
5.2 Controls.....	15	10.10 Cleaning Air Filter Element.....	39
5.3 Auxiliary Hydraulics.....	21	10.11 Battery.....	40
6. Three-point Hitch & Drawbar	22	10.12 Bulb Replacement.....	41
7. Wheels, Tires and Ballast	23	11 Adjustments	42
7.1 Treads.....	24	11.1 Fan Drive Belt.....	42
7.2 Wheel Hub.....	25	11.2 Clutch.....	42
7.3 Tires.....	25	11.3 Brake.....	43
7.4 Ballast.....	25	11.4 Steering Wheel.....	43
7.5 Toe-in.....	26	12. Troubleshooting	44
8. Operating Instructions	27	12.1 Engine Troubleshooting.....	44
8.1 Operating the Engine.....	27	12.2 Tractor Troubleshooting.....	45
8.2 Operating the Tractor.....	27	12.3 Battery Troubleshooting.....	
8.3 Pulling.....	28	13. Long-Term Storage	46
8.4 Check During Driving.....	28	14. Options	47
8.5 Directions for Operating.....	29	15. Lubricant specifications	48
9. Maintenance	30	16. Wiring Diagram	49
9.1 Daily Check.....	30	INDEX	
9.2 Lubricants.....	30		
9.3 Maintenance Check List.....	31		

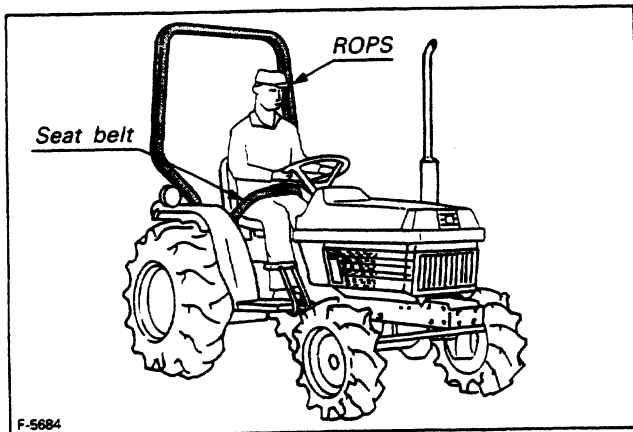


SAFE OPERATION

Careful operation is your best insurance against an accident. Read this section carefully before operating the tractor. All operators, no matter how much experience they may have had, should read this and other related manuals before operating tractor or any implement attached to it. It is the owner's legal obligation to instruct all operators in safe operation.

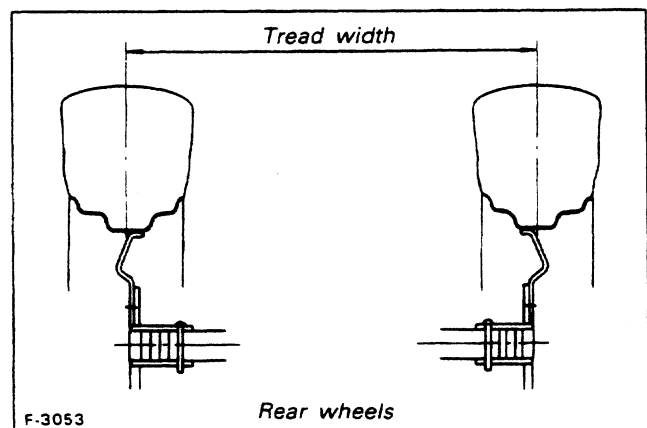
1. BEFORE OPERATING THE TRACTOR

- (1) Know your equipment and its limitations. Read this entire manual before attempting to start and operate the tractor.
- (2) Pay special attention to the warning and caution labels on the tractor itself.
- (3) Kubota recommends the use of a Roll Over Protective Structures (ROPS) and seat belt in almost all applications. This combination will reduce the risk of serious injury or death, should the tractor be upset. If the ROPS is loosened or removed for any reason, make sure that all parts are reinstalled correctly before operating the tractor. Never modify or repair a ROPS because welding, bending, drilling, grinding, or cutting any portion may weaken the structure. A damaged ROPS structure must be replaced, not repaired or revised. If any structural member of the ROPS is damaged, replace the entire structure at your local Kubota dealer.



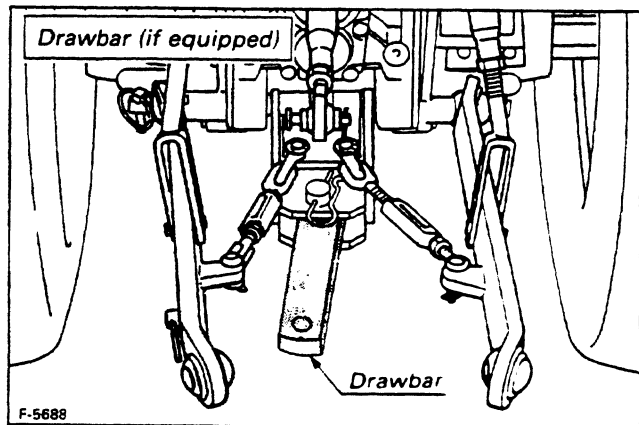
- (4) Always use the seat belt if the tractor has a ROPS. Do not use it if there is no ROPS. Check the seat belt daily and replace if frayed or damaged.
- (5) Do not operate tractor or any implement attached to it while under the influence of alcohol, medication, or other substances or while fatigued.
- (6) Carefully check the vicinity before operating tractor or any implement attached to it. Check for overhead clearance which may interfere with a ROPS. Do not allow any bystanders around or near tractor during operation.

- (7) Before allowing other people to use your tractor, explain how to operate and have them read this manual before operation.
- (8) Never wear loose, torn, or bulky clothing around tractor. It may catch on moving parts or controls, leading to the risk of accident. Use additional safety items.....hard hat, safety boots or shoes, eye and hearing protection, gloves, etc.....as appropriate or required.
- (9) Do not allow passengers or non-qualified operators on the tractor at any time. The operator must remain in the tractor seat throughout operation.
- (10) Check brakes, clutch, and other mechanical parts for faulty adjustment and wear. Replace worn or damaged parts promptly. Check the tightness of all nuts and bolts regularly. (For further details, see MAINTENANCE AND ADJUSTMENTS.)
- (11) Keep your tractor clean. Dirt, grease, and trash accumulations contribute to fires and lead to personal injury.
- (12) Use only implements meeting the specifications listed under IMPLEMENT LIMITATIONS in this manual. Use proper weights to front or rear of tractor to reduce the risk of upsets. Follow the safe operating procedures specified in the manuals included with the equipment.
- (13) The narrower the tread, the greater the risk of a tractor upset. For maximum stability, adjust the wheels to the largest practical tread width. (See page 24).



2. OPERATING THE TRACTOR

- (1) Never start engine or operate levers from anywhere other than the seat.
- (2) Before starting the engine, make sure that all levers (including auxiliary control levers) are in their neutral positions, that the parking brake is engaged, and that both the clutch and the Power Take-Off (PTO) are disengaged.
Fasten the seat belt if the tractor has a ROPS.
- (3) Do not start engine by shorting across starter terminals or bypassing the safety start switch. Machine may start in gear and move if normal starting circuitry is bypassed.
- (4) Pull only from the drawbar. Never hitch to axle housing or any other point except drawbar; such arrangements only increase the risk of serious personal injury or death due to a tractor upset. (fixed or swinging type)

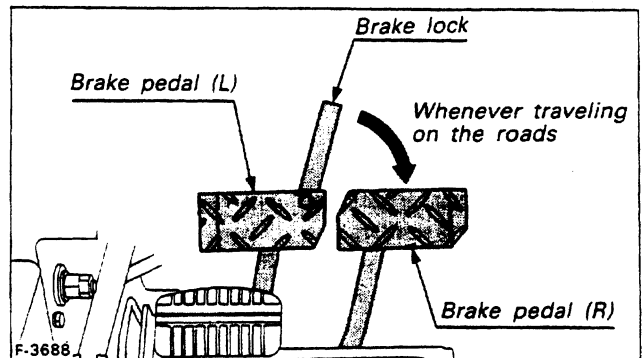


- (5) Do not operate or idle engine in a non-ventilated area. Carbon monoxide gas is colorless, odorless, and deadly.
- (6) Keep all shields and guards in place. Replace any that are missing or damaged.
- (7) Avoid sudden starts. To avoid upsets, slow down when turning, on uneven terrain, and before stopping.
- (8) The tractor cannot turn with the differential locked and attempting to do so could be dangerous.
- (9) Do not operate near ditches, holes, embankments, or other terrain features which may collapse under the tractor's weight. The risk of tractor upset is even higher when the ground is loose or wet.
- (10) Driving forward out of a ditch or mire or up a steep slope risks a tractor upset backward. Always back out of these situations. Extra caution is required with fourwheel drive models because their higher traction can give the operator false confidence in the tractor's ability to climb slopes.
- (11) To avoid upsets, always back up steep slopes. Stay off hills and slopes too steep for safe operation.
- (12) Watch where you are going at all times. Watch for and avoid obstacles. Be alert at row ends, near trees, and other obstructions.

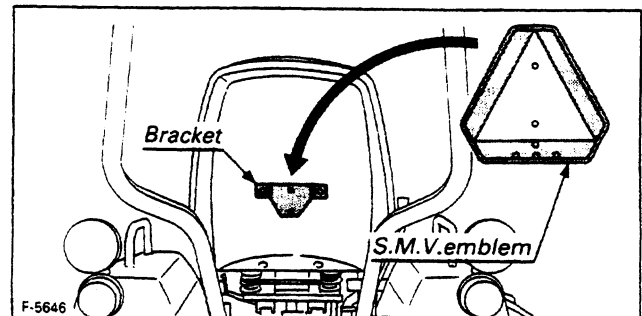
- (13) When working in groups, always let the others know what you are going to do before you do it.
- (14) Never "freewheel". Disengaging the clutch or shift into neutral while descending a slope could lead to a loss of control.
- (15) Never try to get on or off a moving tractor.
- (16) Do not use "Bi-speed Turn" at high speed.
- (17) "Bi-speed Turn" enables short fast turns, therefore, become familiar with its performance before operating in close or confined areas.

3. DRIVING THE TRACTOR ON THE ROAD

- (1) Lock the two brake pedals together to help assure straightline stops. Uneven braking at road speeds could cause the tractor to roll over.



- (2) Always slow the tractor down before turning. Turning at high speed may tip the tractor over.
- (3) Make sure that the Slow-Moving Vehicle (SMV) emblem is clean and visible. Use hazard lights as required.



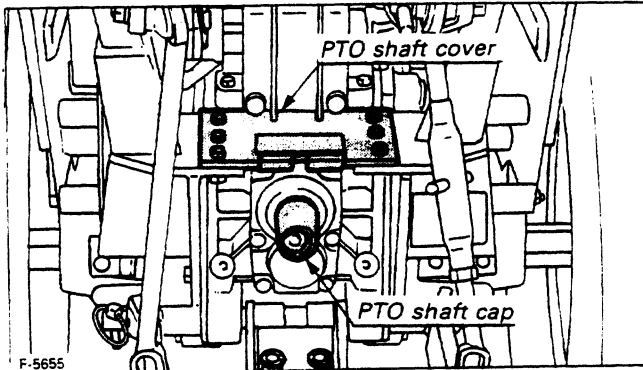
- (4) Observe all local traffic and safety regulations.
- (5) Turn the headlights on. Dim them when meeting another vehicle.
- (6) Drive at speeds that allow you to maintain control at all times.
- (7) Do not apply the differential lock while traveling at road speeds. The tractor may run out of control.
- (8) Avoid sudden motions of the steering wheel as they can lead to a dangerous loss of stability. The risk is especially great when the tractor is traveling at road speeds.
- (9) Do not operate an implement while the tractor is on road. Lock it in the raised position.
- (10) When towing other equipment, use a safety chain and place an SMV emblem on it as well.

4. STOPPING THE TRACTOR

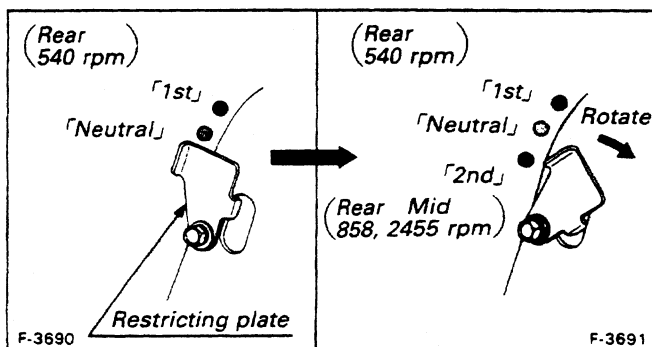
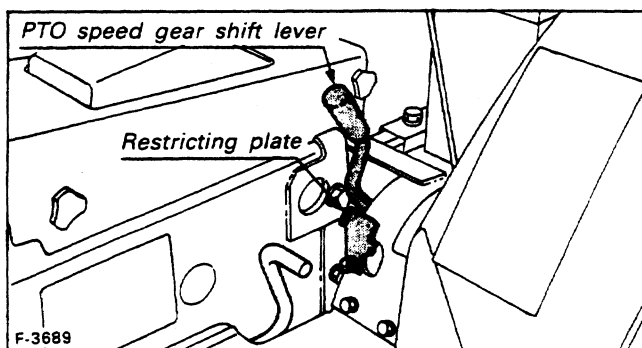
- (1) Disengage the PTO, lower all implements, place all control levers in their neutral positions, apply parking brake, turn off the engine, and remove the key.
- (2) Make sure that the tractor has come to a complete stop before dismounting.

5. OPERATING THE PTO

- (1) Wait until all moving components have completely stopped before getting off the tractor, connecting, disconnecting, adjusting, cleaning, or servicing any PTO driven equipment.
- (2) Keep the PTO shaft cover in place at all times. Replace the PTO shaft cap when the shaft is not in use.



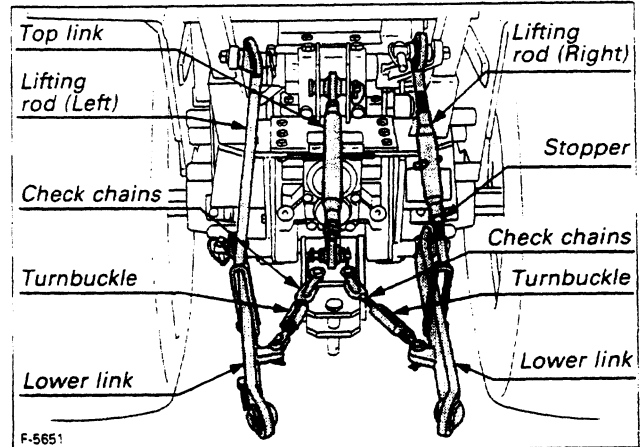
- (3) Before installing or using PTO driven equipment, read the manufacturer's manual and review the safety labels attached to the equipment.
- (4) To prevent PTO driven equipment from racing out of control, stick to the lower (Rear:540rpm) speed unless the higher (Rear:858rpm, Mid:2455rpm) one is specifically recommended as safe by the equipment manufacturer.



- (5) When operating stationary PTO driven equipment, always apply the tractor parking brake and place chocks behind and in front of the rear wheels. Stay clear of all rotating parts.

6. USING 3-POINT HITCH

- (1) Use the 3-point hitch only with equipment designed for 3-point hitch usage.



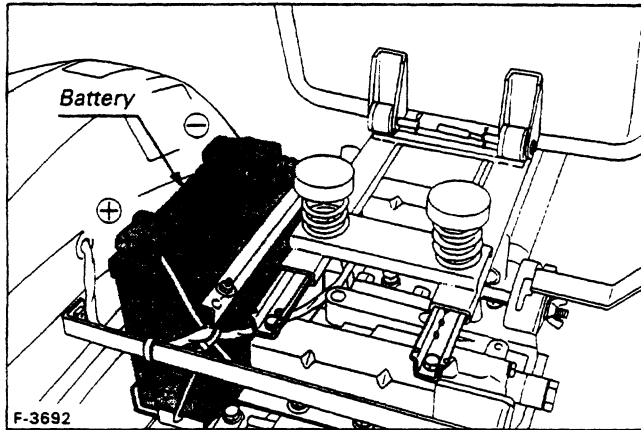
- (2) When using a 3-point hitch mounted implement, be sure to install the proper counterballast weight on the front of the tractor.
- (3) When transporting on the road, set the implement lowering control in the "lock" position to hold the implement in the raised position.

7. SERVICING THE TRACTOR

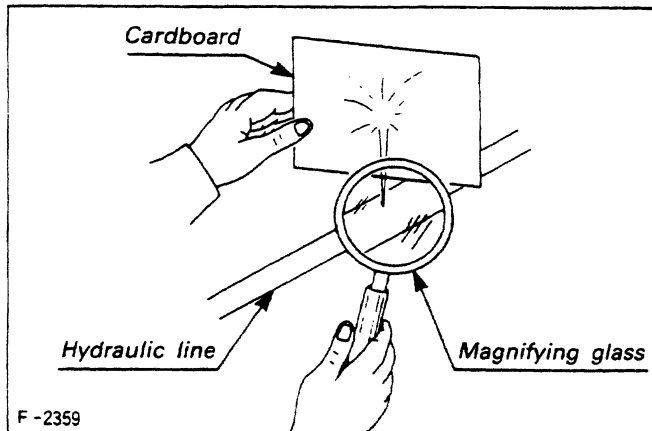
Before servicing the tractor, park it on a firm level surface, set the parking brake, place the gear shift lever in neutral and stop the engine.

- (1) Allow the tractor time to cool off before working on or near the engine, muffler, radiator, etc.
- (2) Always stop the engine before refueling. Avoid spills and overfilling.
- (3) Do not smoke when working around battery or when refueling. Keep all sparks and flames away from battery and fuel tank. The battery presents an explosion hazard because it gives off hydrogen and oxygen....especially when recharging.
- (4) Before "jumping" a dead battery, read and follow all of the instructions. (See page 4)
- (5) Keep first aid kit and fire extinguisher handy at all times.
- (6) Do not remove radiator cap while coolant is hot. When cool, slowly rotate cap to the first stop and allow sufficient time for excess pressure to escape before removing the cap completely. If the tractor has a coolant recovery tank, add coolant there instead of to the radiator.

- (7) Disconnect the battery's ground cable before working on or near electric components.
- (8) To avoid sparks from an accidental short circuit, always disconnect the battery's ground cable \ominus first and connect it last.



- (9) Do not attempt to mount a tire on a rim unless qualified to do so and all proper safety precautions are followed.
- (10) Provide adequate support when changing wheels or the wheel tread width.
- (11) Make sure that wheel bolts have been tightened to the specified torque.
- (12) Escaping hydraulic fluid under pressure has sufficient force to penetrate skin, causing serious personal injury. Before disconnecting hydraulic lines, be sure to release all residual pressure. Before applying pressure to the hydraulic system, make sure that all connections are tight and that all lines, pipes, and hoses are free of damage.

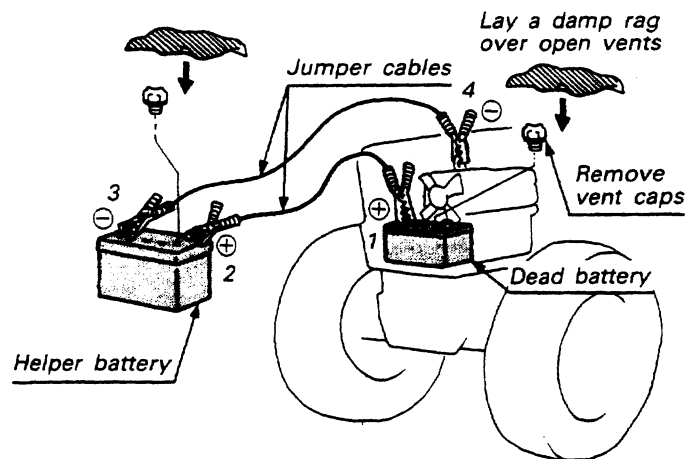


Fluid escaping from pinholes may be invisible. Do not use hands to search for suspected leaks; Use a piece of cardboard or wood, instead. Use of safety goggles or other eye protection is also highly recommended. If injured by escaping fluid, see a medical doctor at once. This fluid can produce gangrene or severe allergic reaction.

8. JUMP STARTING INSTRUCTIONS AND PRECAUTIONS

If ice is present or the battery is cracked, DO NOT ATTEMPT TO "JUMP START" vehicle.

- (1) Bring helper vehicle with a battery of the same voltage as disabled tractor within easy cable reach. "THE VEHICLES MUST NOT TOUCH".
- (2) Engage the parking brakes of both vehicles and put the shift levers in neutral. Turn both key switches off.
- (3) Put on safety goggles and rubber gloves.
- (4) Remove the vent caps from both batteries.
- (5) Cover vent holes with damp rags. Do not allow the rag to touch the battery terminals.
- (6) Attach the red clamp to the positive (red, \oplus or pos.) terminal of the dead battery and clamp the other end of the same cable to the positive (red, \oplus or pos.) terminal of the helper battery.
- (7) Clamp the other cable to the negative (black, \ominus or neg.) terminal of the helper battery.
- (8) Clamp the other end to the engine block or frame of the disabled tractor as far from the dead battery as possible.
- (9) Start the helper vehicle and let its engine run for a few moments. Start the disabled tractor.
- (10) Disconnect the jumper cables in the exact reverse order of attachment. (Steps 8, 7 and 6).
- (11) Remove and discard the damp rags. Reinstall the vent caps.



Connect cables in numerical order.
Disconnect in reverse order after use.

9. WARNING AND CAUTION LABELS

① Part No. 35260—3491—3

CAUTION

TO AVOID PERSONAL INJURY:

1. Read and understand the operator's manual before operation.
2. Before starting the engine, make sure that everyone is at a safe distance from the tractor and that the PTO is OFF.
3. Do not allow passengers on the tractor at any time.
4. Before allowing other people to use the tractor, have them read the operator's manual.
5. Check the tightness of all nuts and bolts regularly.
6. Keep all shields in place and stay away from all moving parts.
7. Lock the two brake pedals together before driving on the road.
8. Slow down for turns, or rough roads, or when applying individual brakes.
9. On public roads use SMV emblem and hazard lights, if required by local traffic and safety regulation.
10. Pull only from the drawbar.
11. Before dismounting, lower the implement, set the parking brake, stop the engine and remove the key.

⑤ Part No. 35820—9863—2

WARNING

AVOID POSSIBLE INJURY OR DEATH FROM A MACHINE RUNAWAY.

1. Do not start engine by shorting across starter terminals or bypassing the safety start switch. Machine may start in gear and move if normal starting circuitry bypassed.
2. Start engine only from operator's seat with transmission and PTO in neutral. Never start engine while standing on ground.

④ Part No. 35200—2534—1

WARNING

TO AVOID PERSONAL INJURY:

1. Keep PTO shield in place at all times.
2. Do not operate the PTO at speeds faster than the speed recommended by the implement manufacturer.

⑥ Part No. 67061—4724—2

WARNING

Do not start engine with speed set lever or speed control pedal engaged.

② Part No. 35260—2979—1

WARNING

TO AVOID PERSONAL INJURY:

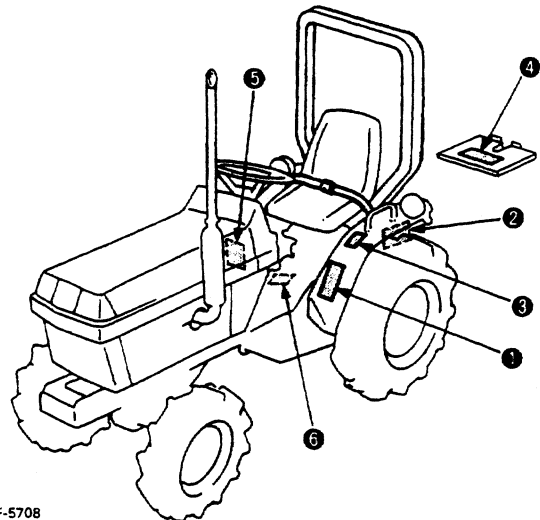
1. Attach pulled or towed loads to the drawbar only.
2. Use the 3-point hitch only with equipment designed for 3-point hitch usage.

③ Part No. 35260—2978—2

WARNING

TO AVOID PERSONAL INJURY OR DEATH FROM ROLL-OVER:

1. Kubota recommends the use of a Roll-Over Protective Structures (ROPS) and seat belt in almost all applications.
2. Remove the ROPS only when it substantially interferes with operation or itself presents a safety risk. (Examples include work in orchards and vineyards.)
ALWAYS REINSTRALL IT BEFORE USING THE TRACTOR IN OTHER APPLICATIONS.
3. Never use just the seat belt or just the ROPS. They must be used together. For further details, consult your Operator's Manual or your local dealer.



F-5708

CARE OF WARNING AND CAUTION LABELS

- (1) Keep warning and caution labels clean and free from obstructing material.
- (2) Clean warning and caution labels with soap and water, dry with a soft cloth.
- (3) Replace damaged or missing warning and caution labels with new labels from your Kubota dealer.
- (4) If component with warning and caution label (s) affixed is replaced with new part, make sure new label(s) is (are) attached in the same location (s) as the replaced component.
- (5) Mount new warning and caution labels by applying on a clean dry surface and pressing any bubbles to outside edge.

1. SERVICING OF TRACTOR

Your dealer is interested in your new tractor and has the wants to help you get the most value from it. After reading this manual thoroughly, you will find that you can do some of the regular maintenance yourself.

When in need of parts or major service, however, be sure to see your KUBOTA dealer.

For service, contact the KUBOTA Dealership from which you purchased your tractor or your local authorized KUBOTA dealer.

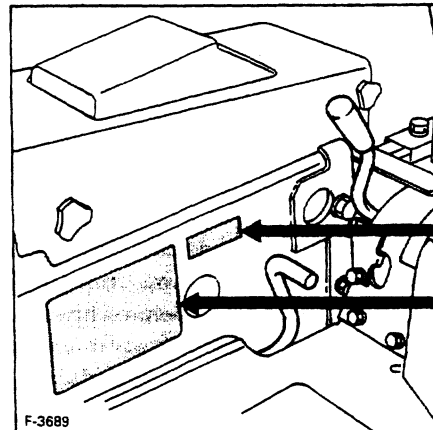
When in need of parts, be prepared to give your dealer both the tractor and engine serial numbers.

The tractor serial number is located on the transmission housing on the left-hand side of the tractor. The engine serial number is located on the engine crankcase, right side. Locate the serial numbers now and record them in the space provided.

KUBOTA B1550HSE (2WD)/B1550HSD (4WD)
B1750HSE (2WD)/B1750HSD (4WD)

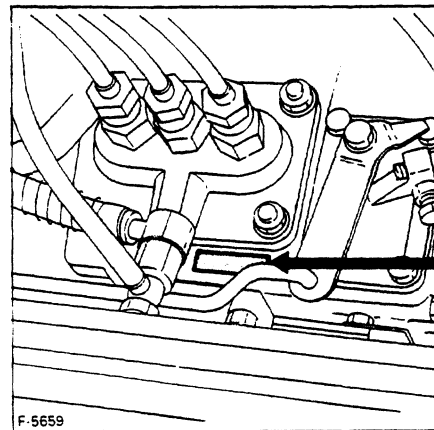
	Type	Serial No.
Tractor	_____	_____
Engine	_____	_____
Date of Purchase	_____	_____

(To be filled in by purchaser)



Tractor
serial number

Identification
plate



Engine
serial number

2. SPECIFICATIONS

2.1 SPECIFICATION TABLE

Model		B1550HSE (2WD)				B1550HSD (4WD)			
Engine gross power		12.7 kW (17 HP)*							
PTO power		9.7 kW (13 HP)*							
Engine	Model	D850-5B							
	Type	Vertical, water-cooled, 4-cycle diesel							
	No. of cylinders	3							
	Bore and stroke	72 mm × 70 mm (2.8 in. × 2.7 in.)							
	Total displacement	855 cm ³ (52.2 cu.in.)							
	Rated revolution	43.3 r/s (2600 rpm)							
	Fuel	Diesel fuel No. 2-D [No.1 diesel fuel if temperature is below -10°C (14°F)]							
	Starter	Electric starter with battery, glow plug and decompression device, 12V, 0.8 kW							
	Lubrication	Forced lubrication by trochoidal pump							
	Cooling	Water with pressurized radiator							
Battery		12V (45 AH)							
Capacities	Fuel tank	18 ℓ (4.8 U.S.gals)							
	Engine crankcase	3.1 ℓ (3.3 U.S.qts.)							
	Engine coolant	2.9 ℓ (3.1 U.S.qts.)							
	Transmission case	13.5 ℓ (14.3 U.S.qts.)							
	Steering gear box	0.2 ℓ (0.2 U.S.qt.)							
	Front axle diff. case	—				0.5 ℓ (0.5 U.S.qt.) Bi-speed Turn: 2.5 ℓ (2.6 U.S.qts.)			
Front axle gear case		—				0.15 ℓ (0.15 U.S.qt.)			
Tires	Front	Farm 4.50-10	Farm 5.00-10	Turf 18×9.50-8	Turf 18×9.50-8	Farm 6-12B	Turf 20.5×8.00-10	Turf 20.5×8.00-10	
	Rear	7-16	8-16	29×12.00-15	31×13.5-15**	8-16	29×12.00-15	31×13.5-15**	
Dimensions	Overall length	mm (in.)	2565 (101.0)	2565 (101.0)	2565 (101.0)	2565 (101.0)	2565 (101.0)	2565 (101.0)	
	Overall width	mm (in.)	910 (35.8)	990 (39.0)	1140 (44.9)	1240 (48.8)	980 (38.6)	1140 (44.9)	1240 (48.8)
		mm (in.)	960 (37.8)	1110 (43.7)			1110 (43.7)		
	Overall height with ROPS	mm (in.)	1875 (73.7)	1900 (74.8)	1880 (74.1)	1890 (74.4)	1900 (74.8)	1880 (74.1)	1890 (74.4)
	Wheelbase	mm (in.)	1470 (57.9)	1470 (57.9)	1470 (57.9)	1470 (57.9)	1470 (57.9)	1470 (57.9)	1470 (57.9)
	Min. ground clearance	mm (in.)	230 (9.1)	255 (10.0)	240 (9.4)	250 (9.8)	240 (9.4)	215 (8.5)	215 (8.5)
Treads	Front	mm (in.)	710 (28.0)	710 (28.0)	850 (33.5)	850 (33.5)	795 (31.3)	825 (32.5)	895 (35.2)
	Rear	mm (in.)	790 (31.1)	790 (31.1)	840 (33.1)	895 (35.2)	790 (31.1)	840 (33.1)	895 (35.2)
		mm (in.)	910 (35.8)	910 (35.8)			910 (35.8)		
Weight (with ROPS)		kg (lbs.)	560 (1235)	570 (1257)	580 (1279)	570 (1257)	625 (1378)	630 (1389)	630 (1389)
Transmission case rear (rear PTO), Transmission case bottom (mid PTO) and engine front (front PTO)									
PTO shaft	Rear PTO	SAE 1-3/8 2 speeds (9.0 and 14.3 r/s at 41.9 engine r/s) (540 and 858 rpm at 2517 engine rpm)							
	Mid PTO	USA No.5 (KUBOTA 10 tooth) Involute spline 1 speeds (40.9 r/s at 41.9 engine r/s) (2455 rpm at 2517 engine rpm)							
Clutch		Dry single plate							
Steering		Recirculating ball type manual steering or integral type power steering (if equipped)							
Transmission		Main-hydrostatic transmission, High-Low gear shift (2 forward, 2 reverse)							
Min. turning radius m (ft)	with Brake	2.10 (6.9)				2.40 (7.9)		Bi-speed Turn: 2.10 (6.9)	
	without Brake	2.30 (7.5)				2.80 (9.2)			
Brake		Internal expanding type, right and left independent with interlocking device							
Differential		Bevel gear							

Note: *Manufacturer's estimate

**Bar Tire (if equipped)

Model		B1750HSE (2WD)				B1750HSD (4WD)					
Engine gross power		14.9 kW (20 HP)*									
PTO power		11.6 kW (15.5 HP)*									
Engine	Model	D950-5B									
	Type	Vertical, water-cooled, 4-cycle diesel									
	No. of cylinders	3									
	Bore and stroke	75 mm X 70 mm (3.0 in. X 2.8 in.)									
	Total displacement	927 cm ³ (56.6 cu.in.)									
	Rated revolution	43.3 r/s (2600 rpm)									
	Fuel	Diesel fuel No. 2-D [No.1 diesel fuel if temperature is below -10°C (14°F)]									
	Starter	Electric starter with battery, glow plug and decompression device, 12V, 0.8 kW									
	Lubrication	Forced lubrication by trochoidal pump									
	Cooling	Water with pressurized radiator									
Capacities	Battery	12V (45 AH)									
	Fuel tank	18 l (4.8 U.S.gals)									
	Engine crankcase	3.1 l (3.3 U.S.qts.)									
	Engine coolant	3.5 l (3.7 U.S.qts.)									
	Transmission case	13.5 l (14.3 U.S.qts.)									
	Steering gear box	0.2 l (0.2 U.S.qt.)									
	Front axle diff. case	—				1.5 l (1.6 U.S.qts.) Bi-speed Turn: 2.5 l (2.6 U.S.qts.)					
	Front axle gear case	—				0.5 l (0.5 U.S.qt.)					
	Tires	Front	Farm 5.00-10	Farm 5.00-10	Turf 18X9.50-8	Turf 18X9.50-8	Farm 6-12B	Farm 6-12	Turf 20.5X8.00-10	Turf 20.5X8.00-10	
		Rear	8-16	9.5-16	29X12.00-15	31X13.5-15**	8-16	9.5-16	29X12.00-15	31X13.5-15**	
Dimensions	Overall length	mm (in.)	2565 (101.0)	2565 (101.0)	2565 (101.0)	2565 (101.0)	2565 (101.0)	2565 (101.0)	2565 (101.0)		
	Overall width	mm (in.)	990 (39.0)	1045 (41.1)	1140 (44.9)	1240 (48.8)	1050 (41.3)	1095 (43.1)	1140 (44.9)	1240 (48)	
			1110 (43.7)	1145 (45.1)			1110 (43.7)	1145 (45.1)			
	Overall height with ROPS	mm (in.)	1900 (74.8)	1925 (75.8)	1880 (74.1)	1890 (74.4)	1900 (74.8)	1925 (75.8)	1880 (74.1)	1890 (74.4)	
	Wheelbase	mm (in.)	1470 (57.9)	1470 (57.9)	1470 (57.9)	1470 (57.9)	1470 (57.9)	1470 (57.9)	1470 (57.9)	1470 (57.9)	
	Min. ground clearance	mm (in.)	255 (10.0)	285 (11.2)	240 (9.4)	250 (9.8)	240 (9.4)	255 (10.0)	215 (8.5)	215 (8.5)	
	Treads	Front	mm (in.)	710 (28.0)	710 (28.0)	850 (33.5)	850 (33.5)	860 (33.9)	860 (33.9)	895 (35.2)	895 (35.2)
		Rear	mm (in.)	790 (31.1)	795 (31.3) 845 (33.3) 895 (35.2) 1015 (40.0)	840 (33.1)	895 (35.2)	790 (31.1) 910 (35.8)	845 (33.3) 895 (35.2) 1015 (40.0)	840 (33.1)	895 (35.2)
Weight (with ROPS)	kg (lbs.)	575 (1268)	585 (1290)	580 (1279)	585 (1290)	635 (1400)	645 (1422)	640 (1411)	645 (1422)		
PTO shaft	Transmission case rear (rear PTO), Transmission case bottom (mid PTO) and engine front (front PTO)										
	Rear PTO	SAE 1-3/8 2 speeds (9.0 and 14.3 r/s at 41.9 engine r/s) (540 and 858 rpm at 2517 engine rpm)									
	Mid PTO	USA No.5 (KUBOTA 10 tooth) involute spline 1 speeds (40.9 r/s at 41.9 engine r/s) (2455 rpm at 2517 engine rpm)									
Clutch	Dry single plate										
Steering	Recirculating ball type manual steering or integral type power steering (if equipped)										
Transmission	Main-hydrostatic transmission, High-Low gear shift (2 forward, 2 reverse)										
Min. turning radius m (ft)	with Brake	2.10 (6.9)				2.10 (6.9)					
	without Brake	2.30 (7.5)				2.55 (8.4) Bi-speed turn: 2.10 (6.9)					
Brake	Internal expanding type, right and left independent with interlocking device										
Differential	Bevel gear										

Note: *Manufacturer's estimate
**Bar Tire (if equipped)

2.2 TRAVELING SPEEDS

Model		B1550HST			
Tire sizes		7-16	8-16	29×12.00-15	31×13.5-15
High-Low gear shift lever					
Forward	L	4.64km/h (2.88mph)	4.96km/h (3.08mph)	4.74km/h (2.95mph)	4.87km/h (3.03mph)
	H	11.85km/h (7.36mph)	12.65km/h (7.86mph)	12.12km/h (7.53mph)	12.44km/h (7.73mph)
Reverse	L	3.48km/h (2.16mph)	3.71km/h (2.31mph)	3.56km/h (2.21mph)	3.65km/h (2.27mph)
	H	8.89km/h (5.52mph)	9.49km/h (5.90mph)	9.09km/h (3.37mph)	9.33km/h (5.80mph)

[at 43.3 engine r/s (2600 engine rpm)]

Model		B1750HST			
Tire sizes		8-16	9.5-16	29×12.00-15	31×13.5-15
High-Low gear shift lever					
Forward	L	4.96km/h (3.08mph)	5.30km/h (3.29mph)	4.74km/h (2.95mph)	4.87km/h (3.03mph)
	H	12.65km/h (7.86mph)	13.53km/h (8.41mph)	12.12km/h (7.53mph)	12.44km/h (7.73mph)
Reverse	L	3.71km/h (2.31mph)	3.97km/h (2.47mph)	3.56km/h (2.21mph)	3.65km/h (2.27mph)
	H	9.49km/h (5.90mph)	10.15km/h (6.31mph)	9.09km/h (3.37mph)	9.33km/h (5.80mph)

[at 43.3 engine r/s (2600 engine rpm)]

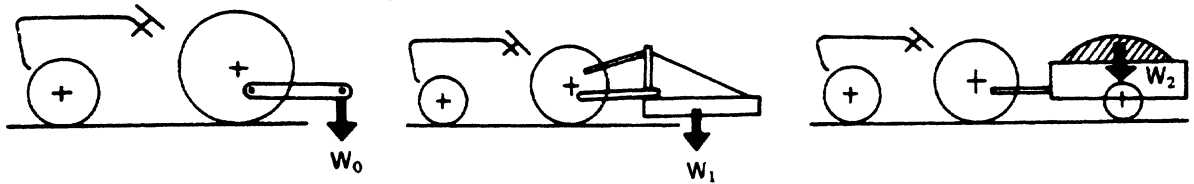
(Specifications and design subject to change without notice)

3. IMPLEMENT LIMITATIONS

The KUBOTA tractor has been thoroughly tested for proper performance with implements sold or approved by KUBOTA. Use with implements which exceed the maximum specifications listed below, or which are otherwise unfit for use with the KUBOTA tractor may result in malfunctions or failures of the tractor, damage to other property and injury to the operator or others. [Any malfunctions or failures of the tractor resulting from use with improper implements are not covered by the warranty.]

Model		B1550HST, B1750HST
Operating condition		General control operation (Flat ground and slope condition)
Lower link end max. loading weight W_0		Below 180 kg (400 lbs.)
Actual figures	Implement weight W_1	As in the following list
	Trailer loading weight W_2	Below 500 kg (1100 lbs.) (without brake) Below 1000 kg (2200 lbs.) (with brake)

Lower link end max. loading weight..... The max. allowable load which can be put on the lower link end: W_0
 Implement weight..... The implement's weight which can be put on the lower link: W_1
 Trailer loading weight..... The max. loading weight for trailer (without trailer's weight): W_2





Download the full PDF manual instantly.

Our customer service e-mail:

aservicemanualpdf@yahoo.com