



SERVICE MANUAL

Number 28

BRAVO STERNDRIVES

Service Manual Outline

Section 1 - Important Information

- A - General Information
- B - Maintenance
- C - Troubleshooting

Section 2 - Removal, Installation and Adjustment

- A - All Models

Section 3 - Sterndrive Unit

- A - Drive Shaft Housing
- B - Gear Housing - Bravo One
- C - Gear Housing - Bravo Two
- D - Gear Housing - Bravo Three

Section 4 - Transom Assembly

- A - Service Procedures Requiring Minor Disassembly
- B - Service Procedures Requiring Major Disassembly

Section 5 - Power Trim

- A - Oildyne Power Trim Pump
- B - Trim Cylinders
- C - Dual Power Trim Control
- D - Auto Trim II

Section 6 - Steering Systems

- A - Power Steering
- B - Compact Hydraulic Steering

Section 7 - Corrosion Protection

- A - All Models

Section 8 - Drives

- A - All Models

Important Information

1

Removal, Installation and Adjustment

2

Sterndrive Unit

3

Transom Assembly

4

Power Trim

5

Steering Systems

6

Corrosion Protection

7

Drives

8

Table of Contents

IMPORTANT INFORMATION

Section 1A - General Information

How To Use This Manual	1A-2	Propeller Rotation	1A-4
Page Numbering	1A-2	Sterndrive Unit 10-Hour Break-In Period (New or With Replacement Gears)	1A-5
How to Read a Parts Manual	1A-3	Serial Number Locations and Engine Designation Decal	1A-5
Introduction	1A-4		
Directional References	1A-4		

Section 1B - Maintenance

Lubricants / Sealants / Adhesives	1B-2	Changing Sterndrive Oil	1B-10
Maintenance Schedules	1B-3	General Maintenance	1B-12
Maintenance Intervals	1B-3	Maintaining Power Package Exterior Sur- faces	1B-12
Gas Sterndrive	1B-3	Steering Head and Remote Control Mainte- nance	1B-12
Routine Maintenance *	1B-3	Checking Quicksilver MerCathode System .. 1B-12	
Gas Sterndrive(Continued)	1B-4	Maintaining Anodic Plate	1B-12
Scheduled Maintenance *	1B-4	Boat Bottom Care	1B-12
Specifications	1B-5	Anti-fouling Paint	1B-12
Torque Specification	1B-5	Maintaining Ground Circuit Continuity	1B-13
Fluid Capacities	1B-5	Power Package Layup	1B-13
Lubrication	1B-5	Engine	1B-13
Shift Cable Pivot Points	1B-5	Sterndrive	1B-13
Propeller Shaft	1B-6	Power Package Recommissioning	1B-14
Steering System	1B-6	Engine	1B-14
Tie Bar Pivot Points	1B-7	Sterndrive	1B-14
Transom Gimbal Housing Assembly Swivel Shaft and Gimbal Bearing	1B-7		
Checking and Adding Sterndrive Oil	1B-8		
Inspection	1B-9		

Section 1C - Troubleshooting

Table of Contents	1C-1	Propeller Ventilating/Cavitating	1C-8
Troubleshooting	1C-2	Poor Boat Performance And/Or Poor Maneuverability-Bow Too Low	1C-9
Sterndrive Unit Troubleshooting	1C-2	Poor Boat Performance And/Or Poor Maneuverability-Bow Too High	1C-9
Sterndrive Unit Will Not Slide Into Bell Housing	1C-2	Power Steering	1C-10
Drive Unit Does Not Shift Into Gear; Remote Control Shift Handle Moves ..	1C-2	Hard Steering - Helm And Cable	1C-10
Drive Unit Does Not Shift Into Gear; Remote Control Shift Handle Does Not Move	1C-3	Hard Steering (Engine Running) - Power Steering System	1C-10
Drive Unit Shifts Hard	1C-3	Power Steering System External Fluid Leaks	1C-10
Drive Unit In Gear, Will Not Shift Out Of Gear	1C-3	Compact Hydraulic Steering	1C-11
Gear Housing Noise	1C-4	Important Information	1C-11
Drive Shaft Housing Noise	1C-4	Helm Becomes Jammed During Filling	1C-11
Drive Shaft Housing Noise (Continued)	1C-5	System Difficult To Fill	1C-11
Drive Shaft Housing Noise (Continued)	1C-6	Steering Hard To Turn	1C-11
Power Shift	1C-7	Helm Unit Bumpy - Requires Too Many Turns	1C-11
System Does Not React	1C-7	Power Trim Electrical System	1C-12
System Binds	1C-7	Power Trim System Wiring Diagram	1C-16
Performance Troubleshooting	1C-8	Power Trim Hydraulic System	1C-17
Low WOT Engine RPM	1C-8	Power Trim Hydraulic Schematic	1C-21
High WOT Engine RPM	1C-8	Auto Trim II Electrical System	1C-22
		Auto Trim II System Wiring Diagram	1C-28
		Corrosion Protection	1C-29

REMOVAL, INSTALLATION AND ADJUSTMENT

Section 2A - All Models

Torque Specifications	2A-2	Sterndrive Unit Removal	2A-6
Lubricants / Sealants / Adhesives	2A-2	Transom Assembly Removal	2A-8
Tools	2A-2	Transom Assembly Installation	2A-12
Transom Specifications	2A-3	Sterndrive Unit Installation	2A-22
Checking Transom Thickness	2A-3	Shift Cable Installation	
Special Information	2A-4	and Adjustment	2A-29
Bravo Three Notice:		Troubleshooting Shift Problems	2A-33
Trim-In Limit Insert	2A-4		

STERNDRIVE UNIT

Section 3A - Drive Shaft Housing

Specifications	3A-2	Shifter Inspection	3A-25
Torque Specifications	3A-2	Shifter Reassembly	3A-26
Tools	3A-2	U-Joint and Pinion Gear	3A-30
Bearing Preloads	3A-3	Inspection	3A-30
Lubricants / Sealants / Adhesives	3A-3	Disassembly	3A-30
Drive Shaft Housing Exploded View	3A-4	Reassembly	3A-34
Complete Housing	3A-4	Gear Disassembly,	
Exploded Parts View (Clutch)	3A-6	Inspection and Reassembly	3A-42
Exploded Parts View (Shifter)	3A-7	Disassembly	3A-42
Standard Bravo U-joint Assembly	3A-8	Inspection	3A-44
Bravo X, XZ, XR and Diesel		Reassembly	3A-44
Bravo U-joint Assembly	3A-9	Drive Shaft Housing and Top Cover -	
Drive Shaft Housing and Gear		Bearings and Bearing Sleeves	3A-47
Case Separation	3A-10	Inspection	3A-47
Drive Unit Gear Ratio Identification	3A-10	Bearing Sleeve Removal (Top Cover)	3A-47
Bravo One	3A-10	Bearing Sleeve Removal	
Bravo Two	3A-10	(Drive Shaft Housing)	3A-48
Bravo Three	3A-11	Roller Bearing Removal	3A-49
Bravo XZ	3A-11	Steel Bearing Adaptor Removal	3A-51
Bravo XR	3A-12	Steel Bearing Adaptor Installation	3A-52
Diesel Bravo One X	3A-12	Bearing Sleeve Installation	3A-53
Diesel Bravo Two X	3A-12	Roller Bearing Installation	3A-54
Diesel Bravo Three X	3A-13	Drive Shaft Housing Reassembly	3A-55
Separate Housings	3A-14	Install Gear Housing To Drive	
Drive Shaft Housing Disassembly	3A-17	Shaft Housing	3A-66
Shifter Repair	3A-22		

Section 3B - Gear Housing - Bravo One

<ul style="list-style-type: none"> Specifications 3B-2 <ul style="list-style-type: none"> Torque Specifications 3B-2 Bearing Preloads 3B-2 Gear Ratio - Teeth Per Gear (Gear Housing) 3B-2 Lubricants / Sealants / Adhesives 3B-2 Tools 3B-3 Bravo One Gear Housing Exploded View . 3B-4 <ul style="list-style-type: none"> Drive Shaft Components 3B-4 Bravo One and Diesel Bravo One X Propeller Shaft Components 3B-6 Bravo XZ and Bravo XR Propeller Shaft Components 3B-8 Pre-Disassembly Inspection 3B-10 Drive Shaft Housing and Gear Housing Separation 3B-11 Gear Housing Disassembly 3B-13 Drive Shaft And Pinion Bearing 3B-19 <ul style="list-style-type: none"> Inspection and Cleaning 3B-19 Drive Shaft Disassembly 3B-19 Pinion Bearing Removal 3B-20 Pinion Bearing Installation 3B-21 Drive Shaft Reassembly 3B-22 Bearing Carrier Inspection 3B-23 	<ul style="list-style-type: none"> Bearing Carrier Disassembly 3B-23 Bearing Carrier Reassembly 3B-24 Propeller Shaft 3B-25 <ul style="list-style-type: none"> Inspection 3B-25 Propeller Shaft Bearing Removal 3B-25 Propeller Shaft Bearing Installation . . 3B-26 Driven Gear Bearing 3B-26 <ul style="list-style-type: none"> Inspection 3B-26 Driven Gear Bearing Removal 3B-27 Driven Gear Bearing Installation 3B-27 Driven Gear Bearing Cup Removal and Inspection 3B-28 Driven Gear Bearing Cup Installation . 3B-28 Speedometer Water Passage 3B-29 <ul style="list-style-type: none"> Pickup Inspection and Cleaning 3B-29 Water Passage Seal Replacement . . . 3B-30 Gear Housing Reassembly And Shimming 3B-31 Bravo XZ and XR Heavy Duty Propeller Shaft 3B-45 <ul style="list-style-type: none"> Gear Housing Disassembly/Reassembly 3B-45 Installing Bearing Carrier 3B-45 Installing Propeller Hub Assembly . . . 3B-47
--	--

Section 3C - Gear Housing - Bravo Two

<ul style="list-style-type: none"> Specifications 3C-2 <ul style="list-style-type: none"> Torque Specifications 3C-2 Bearing Preloads 3C-2 Gear Ratio - Teeth per Gear (Gear Housing) 3C-2 Lubricants/Sealants/Adhesives 3C-2 Tools 3C-3 Bravo Two Gear Housing Exploded View . 3C-4 <ul style="list-style-type: none"> Drive Shaft and Propeller Shaft Components 3C-4 Pre-Disassembly Inspection 3C-6 Drive Shaft Housing and Gear Housing Separation 3C-7 Gear Housing Disassembly 3C-8 Drive Shaft and Pinion Bearing 3C-14 <ul style="list-style-type: none"> Inspection and Cleaning 3C-14 Drive Shaft Disassembly 3C-15 Pinion Bearing Removal 3C-16 Pinion Bearing Installation 3C-17 Drive Shaft Reassembly 3C-18 	<ul style="list-style-type: none"> Bearing Carrier 3C-19 <ul style="list-style-type: none"> Inspection 3C-19 Disassembly 3C-20 Reassembly 3C-21 Propeller Shaft 3C-23 <ul style="list-style-type: none"> Inspection 3C-23 Propeller Shaft Bearing Removal 3C-24 Propeller Shaft Bearing Installation . . 3C-24 Driven Gear Bearing 3C-25 <ul style="list-style-type: none"> Inspection 3C-25 Driven Gear Bearing Removal 3C-25 Driven Gear Bearing Installation 3C-26 Driven Gear Bearing Cup Removal and Inspection 3C-26 Driven Gear Bearing Cup Installation . 3C-27 Speedometer Water Passage 3C-27 <ul style="list-style-type: none"> Pickup Inspection and Cleaning 3C-27 Water Passage Seal Replacement . . . 3C-28 Gear Housing Reassembly and Shimming 3C-29
--	---

Section 3D - Gear Housing - Bravo Three

<p>Table of Contents 3D-1</p> <p>Specifications 3D-2</p> <p> Torque Specifications 3D-2</p> <p> Bearing Preloads 3D-2</p> <p> Gear Ratio - Teeth per Gear (Gear Housing) 3D-2</p> <p> Torque Conversion Chart For Bearing Carrier 3D-3</p> <p> Torque Conversion Chart For Bearing Retainer Nut 3D-3</p> <p> Torquing Outer Prop Shaft Bearing Retainer and Bearing Carrier 3D-4</p> <p>Lubricants/Sealants/Adhesives 3D-4</p> <p>Tools 3D-5</p> <p>Bravo Three Gear Housing</p> <p> Exploded View 3D-6</p> <p> Drive Shaft and Propeller Shaft Components 3D-6</p> <p>Pre-Disassembly Inspection 3D-8</p> <p>Gear Housing Disassembly 3D-9</p> <p>Driveshaft And Pinion Bearing 3D-16</p> <p> Inspection and Cleaning 3D-16</p> <p> Drive Shaft Disassembly 3D-17</p> <p> Drive Shaft Reassembly 3D-17</p> <p>Pinion Bearing 3D-18</p> <p> Removal 3D-18</p> <p> Installation 3D-19</p>	<p>Propeller Shaft 3D-19</p> <p> Inspection 3D-19</p> <p> Disassembly 3D-20</p> <p> Propeller Shaft Spline Lash Check ... 3D-21</p> <p> Outer Propeller Shaft Servicing 3D-23</p> <p>Front Driven Gear And Bearing 3D-24</p> <p> Inspection 3D-24</p> <p> Bearing Removal 3D-24</p> <p> Bearing Installation 3D-24</p> <p> Bearing Cup Removal 3D-25</p> <p> Bearing Cup Installation 3D-25</p> <p>Bearing Carrier Seal And Bearing 3D-26</p> <p> Inspection 3D-26</p> <p> Removal 3D-26</p> <p> Installation 3D-26</p> <p>Speedometer Water Passage 3D-27</p> <p> Inspection and Cleaning 3D-27</p> <p> Seal Removal 3D-28</p> <p> Seal Installation 3D-28</p> <p>Gear Housing Reassembly and Shimming 3D-29</p> <p> Checking Backlash 3D-36</p> <p> Installing Gear Housing On Drive Shaft Housing 3D-42</p> <p>Propeller Installation 3D-43</p>
---	---

TRANSOM ASSEMBLY

Section 4A - Service Procedures Requiring Minor Disassembly

<p>Bravo Transom Assembly Specifications . 4A-2</p> <p> Torque Specifications 4A-2</p> <p> Lubricants / Sealants / Adhesives 4A-2</p> <p> Tools 4A-2</p> <p>Bravo Transom Assembly</p> <p> Exploded Views 4A-4</p> <p> Inner Transom Plate Components 4A-4</p> <p> Bell Housing Components 4A-5</p> <p> Gimbal Ring Components 4A-6</p> <p> Gimbal Housing Components 4A-8</p> <p>Special Information 4A-10</p> <p> Trim Limit Switch 4A-10</p> <p> Trim Position Sender 4A-10</p> <p> Removal 4A-10</p> <p> Installation 4A-12</p> <p> Trim Position Sender Adjustment 4A-16</p> <p> Trim Limit Switch Adjustment 4A-16</p> <p>High Performance Transom Assembly - Without Electrical Trim Sender and Trim Limit Switch .. 4A-18</p>	<p>Gimbal Bearing 4A-19</p> <p> Inspection 4A-19</p> <p> Removal 4A-19</p> <p> Installation 4A-20</p> <p>Shift Cable 4A-22</p> <p> Removal 4A-22</p> <p> Shift Cable Installation 4A-23</p> <p>Exhaust Bellows (If Equipped) 4A-27</p> <p> Removal 4A-27</p> <p> Cleaning and Inspection 4A-27</p> <p> Installation 4A-28</p> <p>Exhaust Tube (If Equipped) 4A-30</p> <p> Removal 4A-30</p> <p> Cleaning and Inspection 4A-30</p> <p> Installation 4A-31</p> <p>Water Hose and Water Fitting 4A-32</p> <p> Removal 4A-32</p> <p> Installation 4A-33</p> <p>Crimp Clamp Tool 4A-35</p>
---	--

Section 4B - Service Procedures Requiring Major Disassembly

<ul style="list-style-type: none"> Bravo Transom Assembly Specifications . . . 4B-2 Torque Specifications 4B-2 Lubricants / Sealants / Adhesives 4B-2 Special Tools 4B-2 Bravo Transom Assembly Exploded Views 4B-4 Inner Transom Plate Components 4B-4 Bell Housing Components 4B-5 Gimbal Ring Components 4B-6 Gimbal Housing Components 4B-8 Bell Housing Removal 4B-10 Access Plug Kit Installation 4B-14 Gimbal Ring, Swivel Shaft and Steering Lever Removal 4B-16 Gimbal Ring Servicing 4B-20 Gimbal Housing Servicing 4B-26 U-joint Bellows Replacement 4B-26 	<ul style="list-style-type: none"> Shift Cable Bellows Replacement 4B-29 Exhaust Bellows Replacement 4B-32 Speedometer Hose Replacement 4B-34 Gear Lube Monitor System Components 4B-35 Trim Position Sender and Trim Limit Switch Wire Replacement 4B-38 Gimbal Ring / Swivel Shaft and Steering Lever Installation 4B-39 Bell Housing Installation 4B-45 Standard Transom Assembly 4B-45 High Performance Transom Assembly 4B-46 Standard And High Performance Transom Assemblies 4B-47 Shift Cable Installation 4B-51 Bravo Access Plug Drilling Template . . . 4B-55 Crimp Clamp Tool 4B-57
--	--

POWER TRIM

Section 5A - Oildyne Power Trim Pump

<ul style="list-style-type: none"> Trim Pump Specifications 5A-2 Valve Pressure Specifications 5A-2 Electrical Specification 5A-2 Torque Specification 5A-2 Special Tools 5A-2 Lubricants / Sealants / Adhesives 5A-2 Trim Pump Exploded View 5A-3 Oildyne Trim Pump 5A-3 Maintaining Power Trim Pump Oil Level . . 5A-4 Air Bleeding Power Trim System 5A-5 Bleeding OUT/UP Trim Circuit 5A-5 Bleeding IN/DOWN Trim Circuit 5A-5 Testing Power Trim Pump 5A-6 Test Gauge 5A-6 Internal Restriction Test 5A-7 OUT/UP Pressure Test 5A-8 IN/DOWN Pressure Test 5A-10 Trim Pump Hydraulic System 5A-11 Trim Cylinder Internal Leak Test 5A-12 Trim Cylinder Shock Piston Test 5A-15 Motor and Electrical Bench Tests 5A-16 Trim Pump Motor Test (In Boat) 5A-16 Trim Pump Motor Test (Out of Boat) . . 5A-18 Solenoid Test (Pump In Boat) 5A-19 Solenoid Test (Pump Out of Boat) . . . 5A-20 110 Amp Fuse Test (Pump in Boat) . . 5A-22 110 Amp Fuse Test (Pump Out of Boat) 5A-22 20 Amp Fuse Test 5A-23 Trim Pump Removal 5A-23 	<ul style="list-style-type: none"> Hydraulic Repair 5A-25 Disassembly 5A-25 Filter Replacement 5A-27 UP Pressure Relief Valve Replacement 5A-28 DOWN Pressure Relief Valve Replacement 5A-29 Thermal Relief Valve Replacement . . . 5A-30 Pump Replacement 5A-30 Adapter Replacement 5A-31 Adapter Repair 5A-33 Pump Shaft Oil Seal Replacement . . . 5A-37 Motor Repair 5A-39 Disassembly 5A-39 Armature Tests 5A-42 Continuity Test 5A-42 Test for Shorts 5A-43 Cleaning Commutator 5A-43 Field Tests 5A-43 Test for Open Circuit 5A-43 Test for Short in Field 5A-44 Thermal Switch Continuity Test 5A-45 Brush Replacement 5A-46 Reassembly 5A-49 Trim Pump Installation 5A-55 Trim Pump Wiring Diagrams 5A-56 Model With Three-Button Trim/Trailer Panel 5A-56 Model With Trim In Handle and Trailer Switch Separate 5A-57
---	---

Section 5B - Trim Cylinders

Specifications	5B-2	Trim Cylinder Internal Leak Test	5B-7
Torque Specifications	5B-2	Trim Cylinder Shock Piston Test	5B-7
Lubricants / Sealants / Adhesives	5B-2	Trim Cylinder Repair	5B-7
Special Tools	5B-2	Removal	5B-7
Trim Cylinder Exploded Views	5B-3	Disassembly	5B-9
Bravo Trim Cylinders	5B-3	Reassembly	5B-14
Bravo Trim System Components	5B-4	Installation	5B-21
Power Trim Hydraulic Schematic	5B-5		
Special Information	5B-6		
Bravo Three Notice: Trim-In Limit Insert	5B-6		

Section 5C - Dual Power Trim Control

Important Information	5C-2	Diode Module Replacement	5C-7
Testing Dual Power Trim System	5C-2	Removal	5C-7
Relay Test	5C-2	Installation	5C-7
Diode Module Test	5C-3	Trim Control Panel Switch(es) Replacement	5C-8
Trailer Switch Test	5C-4	Removal	5C-8
Starboard Trim Switch Test	5C-4	Installation	5C-9
Port Trim Switch Test	5C-4	Wiring Diagrams	5C-10
Dual Power Trim System Component Repair	5C-5	Dual Trim Harnesses	5C-10
Important Information	5C-5	Electrical Box Wiring	5C-11
Relay Replacement	5C-5		

Section 5D - Auto Trim II

Auto Trim II System	5D-2	Auto Trim Limit Adjustment	5D-6
Description	5D-2	Adjusting Sterndrive Unit Trim Angle	5D-7
Auto Trim II Operation	5D-2	Control Module Adjustment	5D-9
Auto Mode Operation	5D-3	Trim Position Indicator Adjustment	5D-10
"Manual" Mode Operation	5D-4	Wiring Diagram	5D-11
Electrical System Overload Protection	5D-6		

STEERING SYSTEMS

Section 6A - Power Steering

Specifications	6A-2	Power Steering Assembly	6A-11
Torque Specifications	6A-2	Removal	6A-11
Special Tools	6A-2	Installation	6A-12
Lubricants/Sealants/Adhesives	6A-2	Power Steering System Pressure Test	6A-15
Description	6A-3	Pump Pressure Test	6A-17
Control Valve	6A-3	Power Steering Pump	6A-19
Power Steering System	6A-4	Removal	6A-19
RIGHT TURN	6A-4	Flow Control Valve Servicing	6A-20
Power Steering System	6A-5	Pump Shaft Oil Seal Replacement	6A-21
LEFT TURN	6A-5	Disassembly	6A-23
Power Steering System	6A-6	Cleaning And Inspection	6A-26
NEUTRAL	6A-6	Reassembly	6A-26
Steering Helm and Cable	6A-7	Installation	6A-32
Steering Cable Specifications	6A-8	Multiple Sterndrive Steering Tie Bar Arrangements	6A-33
Filling and Air Bleeding Power Steering System	6A-9	Determining Tie Bar Length	6A-34
Checking Fluid Level	6A-9	Selection	6A-35
Engine Cold	6A-9	Installation	6A-35
Filling and Bleeding	6A-10		

Section 6B - Compact Hydraulic Steering

Important Information About Thru-Transom Exhaust	6B-2	Single Station With Single Cylinder	6B-7
Torque Specifications	6B-2	Purging	6B-8
Lubricants / Sealants / Adhesives	6B-2	Connecting The Clevis	6B-10
Removal	6B-3	Hydraulic Fluid Level	6B-11
Installing The Steering Cylinder	6B-4	Setting Fluid Level	6B-11
Filling And Purging The System	6B-6	Maintaining Fluid Level	6B-11
Twin Station and/or Twin Cylinder	6B-6	System Check	6B-11

CORROSION PROTECTION

Section 7A - All Models

Specifications	7A-2	Wiring Diagrams	7A-13
Special Tools	7A-2	MerCathode Monitor	7A-13
Lubricants / Sealants / Adhesives	7A-2	MerCathode Controller	7A-14
Continuity Circuit	7A-2	Quicksilver Isolator	7A-15
Trim Cylinder Anodes	7A-5	Corrosion Protection Testing and Troubleshooting	7A-15
Anodic Plate	7A-6	Test Equipment Set-Up	7A-18
Bravo One Sterndrive Units	7A-6	Low Readings	7A-19
Bravo Two Sterndrive Units	7A-8	Low Readings (continued)	7A-20
Bravo Three Sterndrive Units	7A-8	High Reading	7A-21
Integral MerCathode System	7A-9	Normal Reading But Corrosion is Evident	7A-21
Removing Electrode Assembly	7A-9		
Installing Electrode Assembly	7A-10		
Connect Electrical Leads to Controller Assembly	7A-12		

ACCESSORIES

Section 8A - All Models

Specifications	8A-2	Shift Cable Replacement and Adjustment	8A-14
Torque Specifications	8A-2	Installation Preparation	8A-14
Lubricants / Sealants / Adhesives	8A-2	Shift Cable Barrel Adjustment	8A-14
Power Shift (P/N 38638A4)	8A-2	Installing Input Cable	8A-15
Description	8A-2	Installing Output Cable	8A-16
General Information	8A-3	Attach Dust Cover	8A-16
Checking Vacuum Drop-Off	8A-5	Mounting Power Shift Cylinder	8A-17
Power Shift Cylinder Repair	8A-6	Connecting Vacuum Hose to Engine	8A-17
Removal	8A-6		
Disassembly	8A-6		
Reassembly	8A-9		

IMPORTANT INFORMATION

Section 1A - General Information

**1
A**

Table of Contents

How To Use This Manual	1A-2
Page Numbering	1A-2
How to Read a Parts Manual	1A-3
Introduction	1A-4
Directional References	1A-4
Propeller Rotation	1A-4
Sterndrive Unit 10-Hour Break-In Period (New or With Replacement Gears)	1A-5
Serial Number Locations and Engine Designation Decal	1A-5

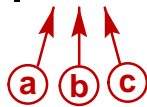
How To Use This Manual

This manual is divided into sections that represent major components and systems. Some sections are further divided into parts that more fully describe the component. Sections and parts are listed at front of this manual.

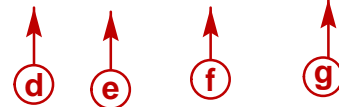
Page Numbering

Two number groups appear at the bottom of each page. Following is an example and description.

Page 1A-2



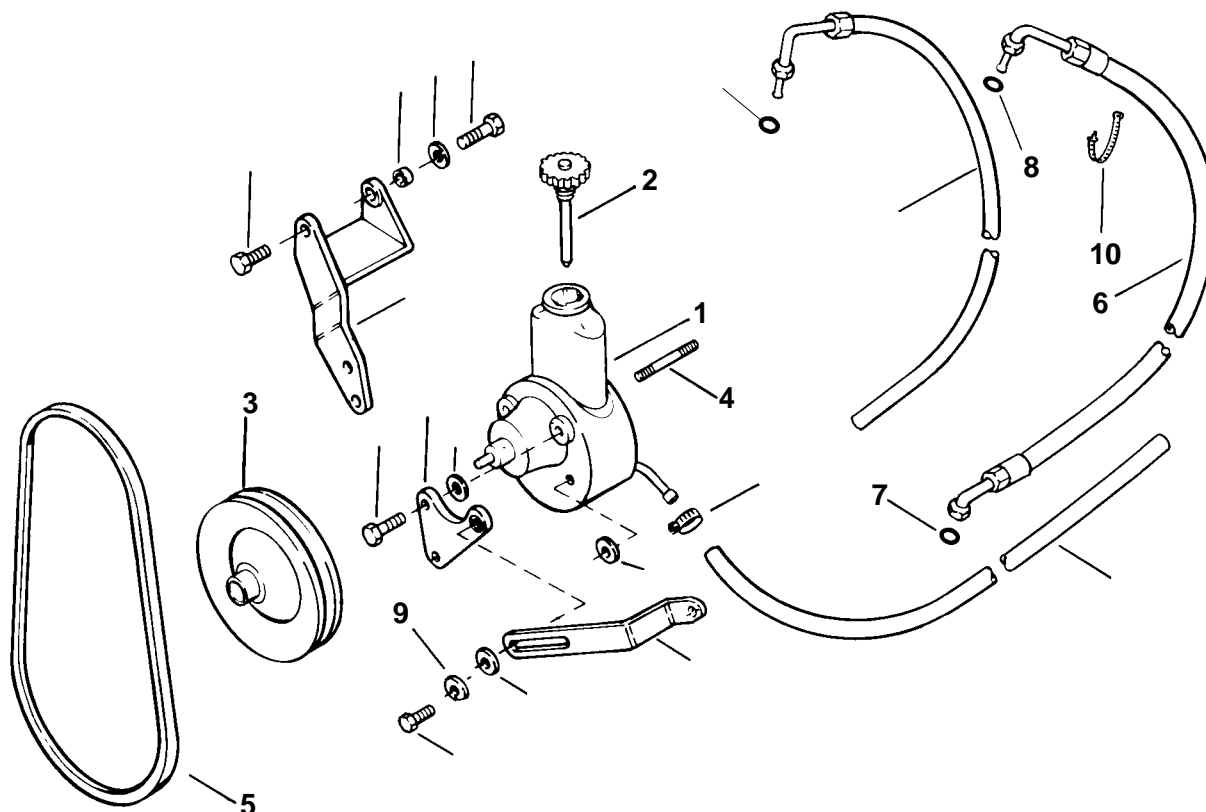
90-17431--4 FEBRUARY 1998



- a** - Section Number
- b** - Section Part
- c** - Page Number
- d** - Manual Part Number
- e** - Revision Number
- f** - Month Printed
- g** - Year Printed

How to Read a Parts Manual

Power Steering Pump Assembly



REF. NO.	PART NO.	SYM.	QTY.	DESCRIPTION
1	90507A12		1	PUMP ASSEMBLY-Power Steering
2	36- 95805		1	CAP
3	73873A1		1	PULLEY
4	16- 41877		1	STUD
5	57- 65607T		1	V-BELT
6	32- 806684		1	HOSE-Pressure (FITTINGS ON BOTH ENDS)
7	25- 89879		1	O-RING
8	25- 806232		1	O-RING
9	13- 35048		1	LOCKWASHER (3/8 in.)
10	61990		1	CABLE TIE

REF. NO. : Number shown next to part on exploded view

PART NO. : Mercury Part Number for ordering. If NSS (not sold separately) sometimes GM part number will be given in description column.

QTY. : The quantity that must be ordered.

DESCRIPTION : Description of part, what parts are included with a part (all indented items come with the main item above the indented parts), serial number information, and special information.

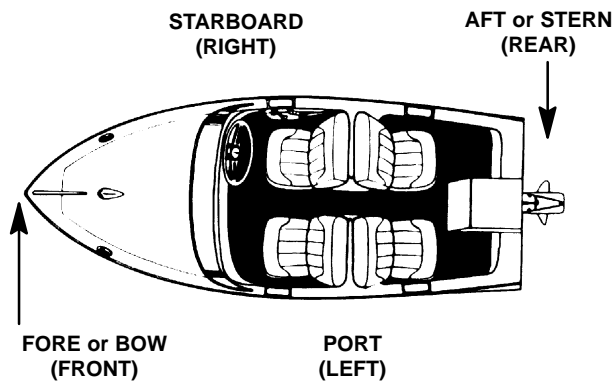
Introduction

This comprehensive overhaul and repair manual is designed as a service guide for the MerCruiser models previously listed. It provides specific information, including procedures for disassembly, inspection, assembly and adjustment, to enable dealers and service mechanics to repair these products.

Before attempting repairs, that procedure should first be read through to help understand the methods and tools used and the cautions and warnings required for safety.

Directional References

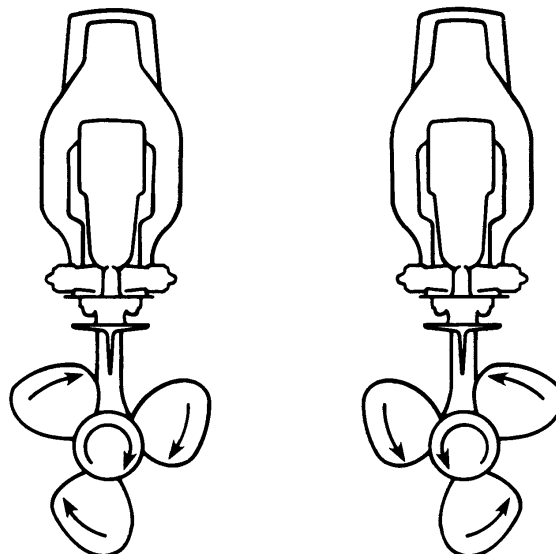
Front of boat is bow; rear is stern. Starboard side is right side; port side is left side. In this service manual, all directional references are given as they appear when viewing boat from stern, looking toward bow.



72000

Propeller Rotation

Propeller rotation for sterndrive can be right hand or left hand rotation as viewed from the aft end of the propeller.



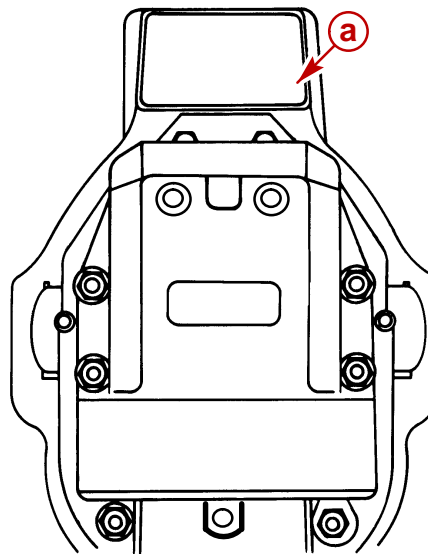
Right Hand Rotation

Left Hand Rotation

Sterndrive Unit 10-Hour Break-In Period (New or With Replacement Gears)

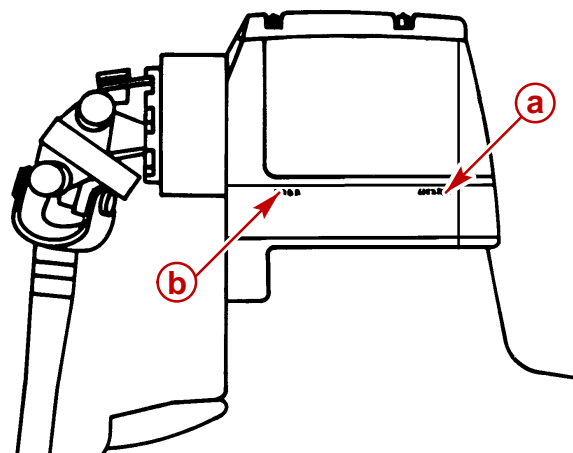
1. Avoid full throttle starts.
2. DO NOT operate at any one constant speed for extended periods of time.
3. DO NOT exceed 75% of full throttle during the first 5 hours. During the next 5 hours, operate at intermittent full throttle.
4. Drive unit should be shifted into forward gear a minimum of 10 times during break-in, with run-in time at moderate rpm after each shift.

Serial Number Locations and Engine Designation Decal



Transom Assembly Serial Number Location

a - Transom Assembly Serial Number



Sterndrive Unit Serial Number Location - Port Side Decal

a - Sterndrive Unit Serial Number
b - Sterndrive Unit Gear Ratio

IMPORTANT INFORMATION

Section 1B - Maintenance

**1
B**

Table of Contents

Lubricants / Sealants / Adhesives	1B-2	Changing Sterndrive Oil	1B-10
Maintenance Schedules	1B-3	General Maintenance	1B-12
Maintenance Intervals	1B-3	Maintaining Power Package Exterior Sur-	
Gas Sterndrive	1B-3	faces	1B-12
Routine Maintenance *	1B-3	Steering Head and Remote Control Mainte-	
Gas Sterndrive(Continued)	1B-4	nance	1B-12
Scheduled Maintenance *	1B-4	Checking Quicksilver MerCathode System ..	
Specifications	1B-5	1B-12	
Torque Specification	1B-5	Maintaining Anodic Plate	1B-12
Fluid Capacities	1B-5	Boat Bottom Care	1B-12
Lubrication	1B-5	Anti-fouling Paint	1B-12
Shift Cable Pivot Points	1B-5	Maintaining Ground Circuit Continuity	1B-13
Propeller Shaft	1B-6	Power Package Layup	1B-13
Steering System	1B-6	Engine	1B-13
Tie Bar Pivot Points	1B-7	Sterndrive	1B-13
Transom Gimbal Housing Assembly Swivel		Power Package Recommissioning	1B-14
Shaft and Gimbal Bearing	1B-7	Engine	1B-14
Checking and Adding Sterndrive Oil ...	1B-8	Sterndrive	1B-14
Inspection	1B-9		

Lubricants / Sealants / Adhesives

Description	Part Number
Quicksilver 4-Cycle 25W-40 Marine Engine Oil	92-802837A1
SAE 20W, 30W Or 40W Engine Oil	Obtain Locally
Quicksilver High Performance Gear Lube	92-802854A1
Extended Life Ethylene Glycol Antifreeze	Obtain Locally
Quicksilver Special Lubricant 101	92-13872A1
Quicksilver Engine Coupler Spline Grease	92-802869A1
Quicksilver Corrosion Guard Spray	92-802878 55
Quicksilver 2-4-C Marine Lubricant With Teflon	92-825407A3
Quicksilver U-Joint and Gimbal Bearing Grease	92-828052A2
Quicksilver Power Trim And Steering Fluid	92-802880A1
Exxon Unirex EP 2 Grease	Obtain Locally

Approved Hydraulic Steering Fluids	Quicksilver Hydraulic Fluid	64-826485A1
	Texaco® H015	92-862014A1
	SeaStar® Hydraulic Fluid HA5430	Obtain Locally
	Chevron® Aviation Fluid A	
	Mobil® Aero HFA	
	Shell® Aero 4	
	Fluid meeting MIL Specification H5606C	

Maintenance Schedules

Maintenance Intervals

Maintenance intervals and tasks, as shown in this schedule, or as found in previously printed schedules, are based on an average boating application and environment. However, individual operating habits and personal maintenance preferences can have an impact on the suggested intervals. In consideration of these factors, Mercury MerCruiser has adjusted some maintenance intervals and corresponding tasks to be performed. In some cases, this may allow for more tasks to be performed in a single visit to the servicing dealer, rather than multiple visits. Therefore, the boat owner and servicing dealer must discuss the current Maintenance Schedule and develop appropriate maintenance intervals to coincide with the individual operating habits, environment and maintenance requirements.

CAUTION

Always disconnect battery cables from battery BEFORE working around electrical systems components to prevent injury to yourself and damage to electrical system should a wire be accidentally shorted.

Gas Sterndrive

Routine Maintenance *	Each Day Start	Each Day End	Weekly	Every Two Months
Check crankcase oil (interval can be extended based on experience).	●★			
If operating in salt, brackish or polluted waters, flush cooling system after each use.		●★		
Check sterndrive unit oil level, trim pump oil level and steering fluid level.			●★	
Check water pickups for debris or marine growth. Check water strainer and clean. Check coolant level.			●★	
Inspect sterndrive unit anodes and replace if 50 percent eroded.			●★	
Inspect fuel pump sight tube (if equipped) and have pump replaced if fuel is present.			●★	
Check battery connections and fluid level.				●★
Lubricate propeller shaft and the retorque nut (if operating in only freshwater, this maintenance may be extended to every four months).				●★
Operating in saltwater only: treat engine surface with corrosion guard.				●★

* Only perform maintenance that applies to your particular power package

- Standard Models
- ★ Horizon Models



Download the full PDF manual instantly.

Our customer service e-mail:

aservicemanualpdf@yahoo.com