

Update Date : 2020/04/27 Print Date : 2022/02/13

# BX231D5-C













FUJTB 248 10





Item	Capacity	Change Interval
Engine Oil	3 3L	after the first 50 hours of operation Every 200 hours
Engine Oil Filter		after the first 50 hours of operation Every 200 hours




### ELECTRICAL PARTS

 010	 020	 030	 040		
 050		HEAD  060		SIDE MARKER  070	HAZARD (FRONT)  080
TAIL LIGHT  090	HAZARD (REAR)  100				





### FILTERS / ELEMENTS

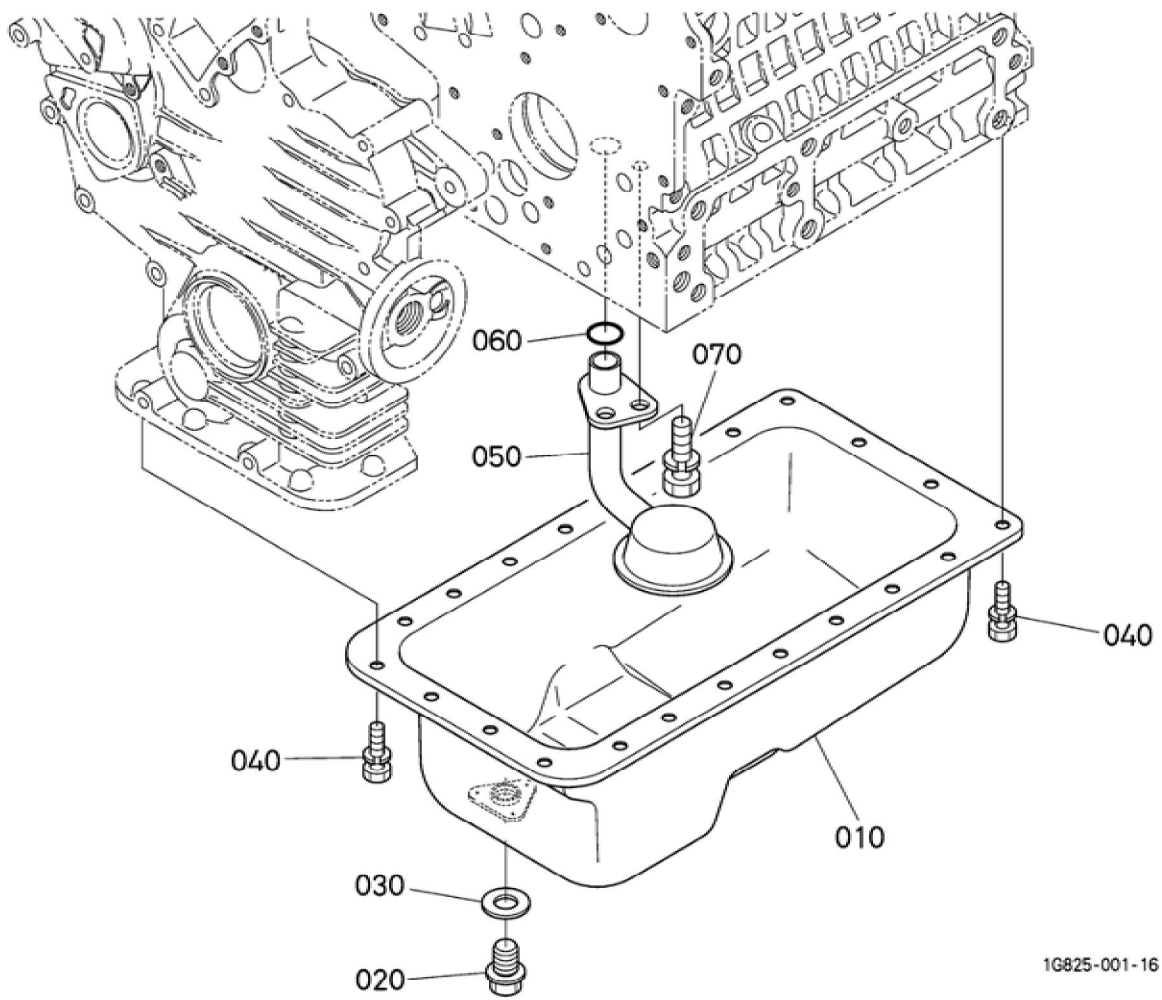
ENGINE	FUEL	TRANSMISSION	AIR CLEANER		
 110	 120	 130	 140		

### BELT

FAN					
 150					

### OTHERS

 160	 170	 180	 190		
---	--	---	---	--	--

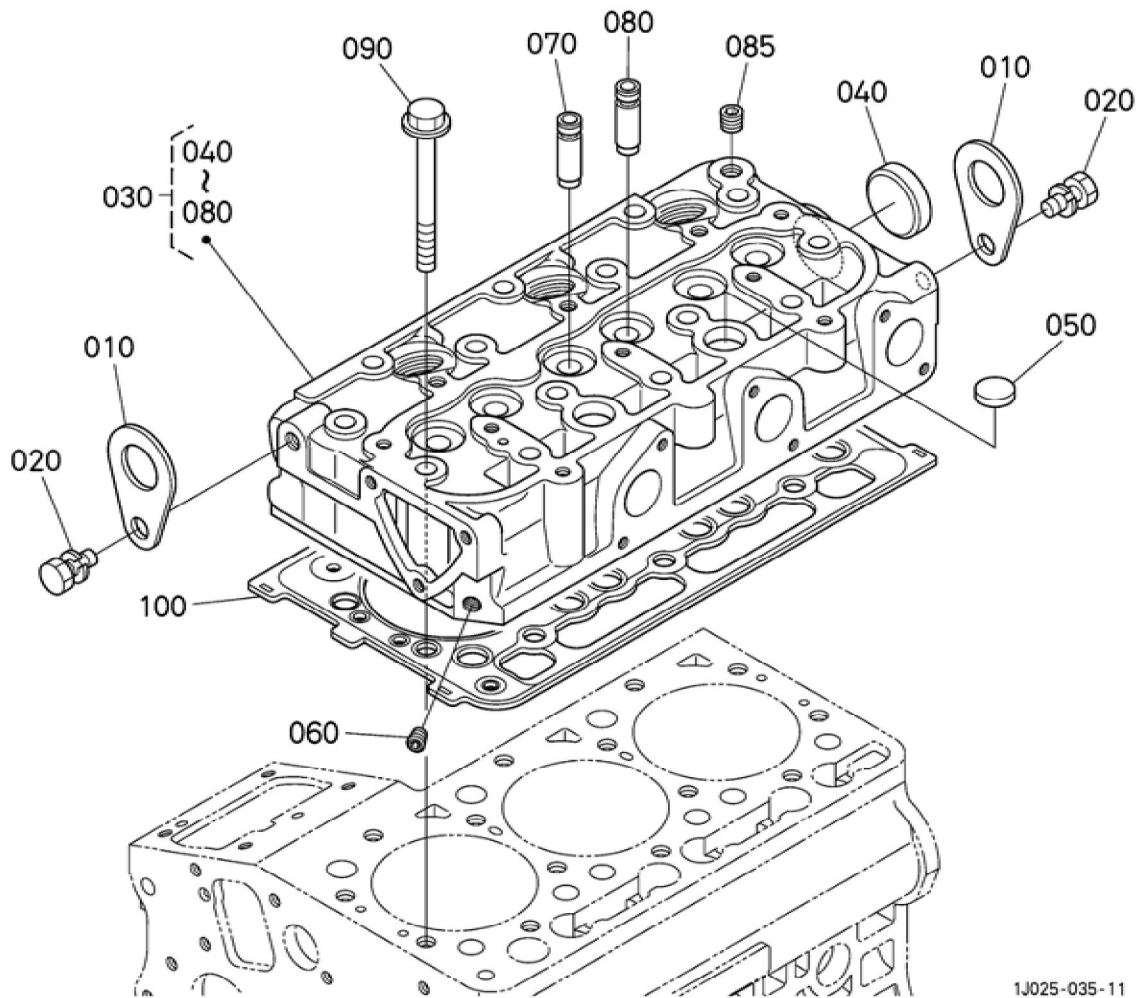


## BKIDK5237 &gt;&gt; BX231D5-C &gt;&gt; MOTOR / ENGINE &gt;&gt; 000200 OELWANNE / OIL PAN

Update Date : 2020/04/27 Print Date : 2022/02/13

No.	Part Number	Part Name (POL)	Part Name (ENG)	QTY	IC	Serial No./PIN	Kg	Remarks
010	1G826-01500	KOMP.OELW ANNE	COMP.OIL PAN	1			1.050	
020	13901-33750	ENTLEERUN GSSTOPFEN	PLUG,DRAIN	1			0.025	
030	15862-96670	DICHTUNGSP LATTE	GASKET	1			0.001	
040	01023-50612	BOLZEN	BOLT,SEMS	22			0.005	
050	16813-32110	OELFILTER	FILTER,OIL	1			0.110	
060	04814-00160	O RING	O RING	1			0.001	
070	01123-50814	BOLZEN	BOLT,SEMS	1			0.010	

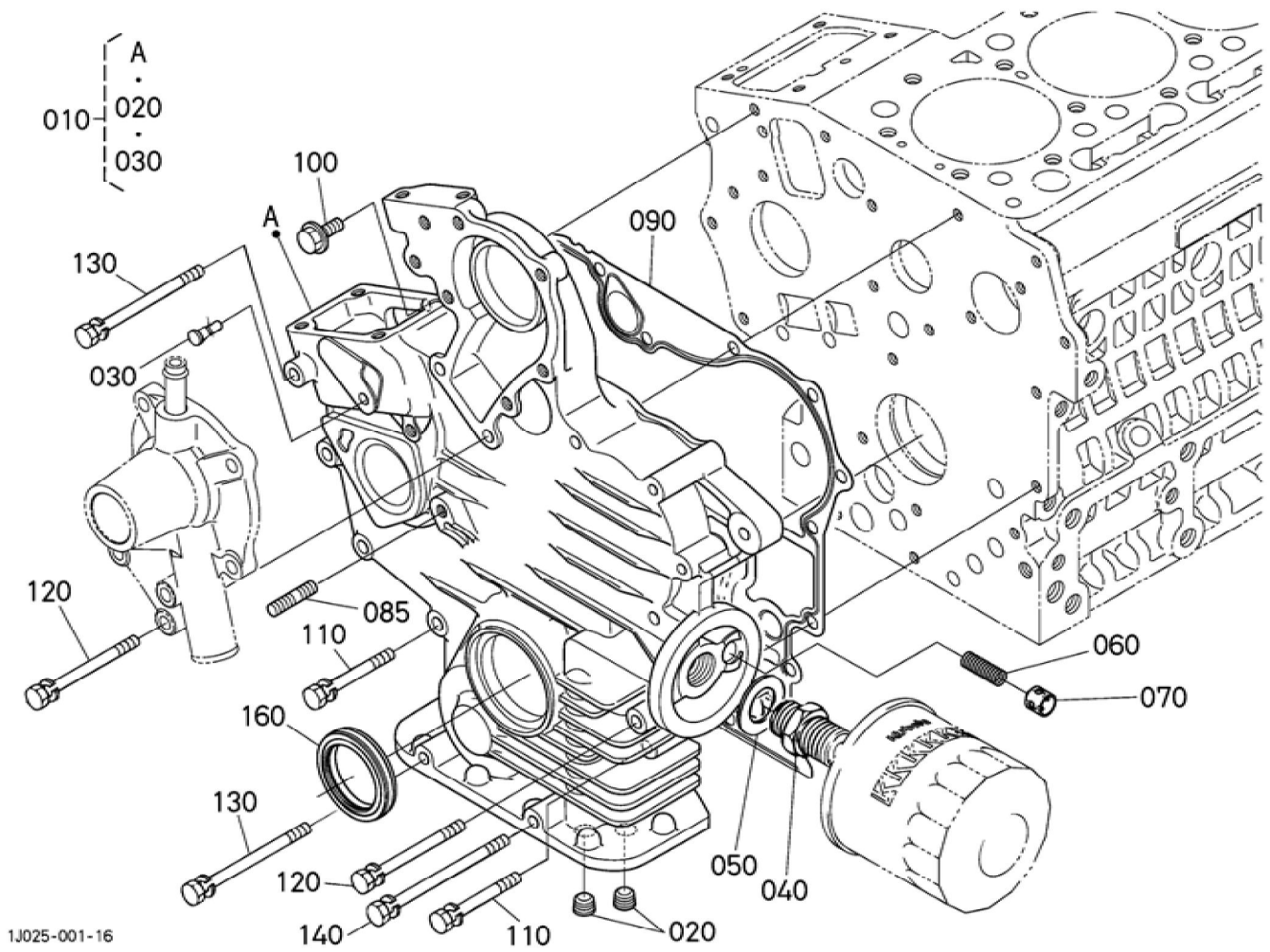
Update Date : 2020/04/27 Print Date : 2022/02/13



## BKIDK5237 &gt;&gt; BX231D5-C &gt;&gt; MOTOR / ENGINE &gt;&gt; 000300 ZYLINDERKOPF / CYLINDER HEAD

Update Date : 2020/04/27 Print Date : 2022/02/13

No.	Part Number	Part Name (POL)	Part Name (ENG)	QTY	IC	Serial No./PIN	Kg	Remarks
010	15221-01750	MOTORHAKE N	HOOK,ENGINE	2			0.040	
020	01123-50816	SCHRAUBE	BOLT,SEMS	2			0.011	
030	1J025-03040	KOMP.ZYLIN DERKOPF	HEAD,CYLIN DER,COMP	1			7.000	
040	15321-96260	KAPPE	CAP,SEALING	1			0.014	
050	15261-03370	STOEPSEL,A BDICHTUNG	CAP,SEALING	2			0.005	
060	15261-96010	STOPFEN	PLUG	1			0.002	
065	1G090-96010	STECKER	PLUG	1			0.003	AUßER GEBRAUCH
070	15841-13540	EINLASSVEN TILFUEHRUN G	GUIDE,VALVE (INLET)	3			0.014	
080	15841-13560	AUSLASSVEN TILFUEHRUN G	GUIDE (EXHAUST VALVE)	3			0.014	
085	15841-96020	STOPFEN	PLUG	1			0.020	
090	14601-03450	ZYLINDERKO PFSCHRAUB E	BOLT,HEAD (CYLINDER)	14			0.035	
100	1G962-03313	ZYLINDERKO PFDICHTUNG	GASKET,CYL. HEAD	1			0.060	





**Download the full PDF manual instantly.**

**Our customer service e-mail:**

**[aservicemanualpdf@yahoo.com](mailto:aservicemanualpdf@yahoo.com)**