

Instructions for Parts Books

The heading at the top of the page will be the same for the picture of the parts at it is for the page with the part numbers.

Definition of column headings on part number pages:

REF.No → The number referring to the part on the picture page of the parts book.

Part No. → The number assigned to this part at the time of printing the parts book.

Description → Discription of part.

Q'ty → Quantity of part used on that page.

S.No. → Serial number range of the equipment that this part will fit.

>= Your serial number should be greater than or equal to the number shown.

<= Your serial number should be lesser than or equal to the serial number shown.

I/C → Interchangeability of part shown.

↔ The part shown will work for the older and later serial number.

The part shown is not interchangeable with the other serial number.

← new for old

→ old for new

Remarks → Notes about this particulart part. Sometimes this may say except [FR] or [CA]

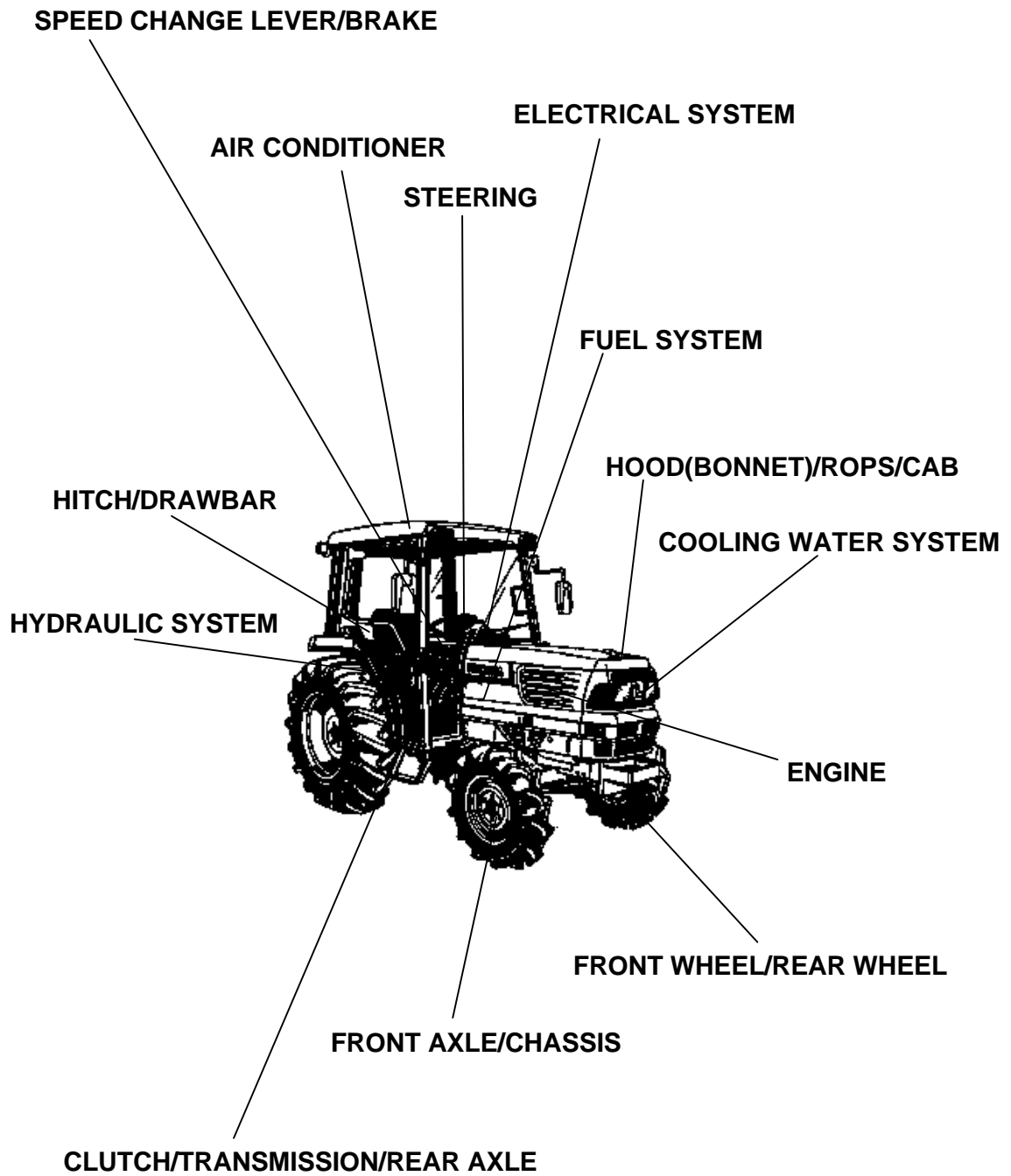
Note about Country Codes:

The parts books we use in the United States of America may also contain information about a part that would be different in another country. It is important that you are aware of the country codes in some instances.

Symbol	Country
A	United States of America
CA	Canada
FR	France
GR	Greece
PO	Portugal
AU	Australia

If the remarks column says for example EXCEPT [FR] this part works in all countries except France. That means it will work here in the USA.

ALL PRODUCT INDEX
L4310DT-GST-C/HST-C



LABELS
ACCESSORIES
OPTION

Item	Part No.	Description	Book	
ENGINE	010001	CRANKCASE	100K0490	
	010002	OIL PAN	100K0490	
	010003	CYLINDER HEAD	100K0490	
	010004	GEAR CASE	100K0490	
	010005	HEAD COVER	100K0490	
	010100	MAIN BEARING CASE	100K0490	
	010101	CAMSHAFT AND IDLE GEAR SHAFT	100K0490	
	010102	PISTON AND CRANKSHAFT	100K0490	
	01010301	FLYWHEEL [W/O IND-PTO]	100K0490	
	01010303	FLYWHEEL [WITH IND-PTO]	100K0490	
	010105	FUEL CAMSHAFT	100K0490	
	010200	ENGINE STOP LEVER	100K0490	
	010202	INJECTION PUMP	100K0490	
	010203	INJECTION PUMP [COMPONENT PARTS]	100K0490	
	010204	GOVERNOR	100K0490	
	010205	SPEED CONTROL PLATE	100K0490	
	010206	NOZZLE HOLDER AND GLOW PLUG	100K0490	
	010207	NOZZLE HOLDER [COMPONENT PARTS]	100K0490	
	01050002	WATER FLANGE AND THERMOSTAT [CAB TYPE]	100K0490	
	010501	WATER PUMP	100K0490	
	010600	VALVE AND ROCKER ARM	100K0490	
	01060102	INLET MANIFOLD [CAB TYPE]	100K0490	
	01090102	UPPER GASKET KIT	100K0490	
	010902	LOWER GASKET KIT	100K0490	
	010603	EXHAUST MANIFOLD/MUFFLER	100K0490	
	01060403	AIR CLEANER [CAB TYPE] [OLD TYPE]	100K0490	
	01060404	AIR CLEANER [CAB TYPE] [NEW TYPE]	100K0490	
	01A002	STOP SOLENOIDE/ENGINE STOP WIRE	100K0490	
	01A01003	ACCELERATOR LEVER [GST TYPE] [CAB TYPE]	100K0490	
	01A01004	ACCELERATOR LEVER [HST TYPE] [CAB TYPE]	100K0490	
	01A025	ACCELERATOR LINKAGE [EXCEPT HST TYPE]	100K0490	
	01A03002	ACCELERATOR ROD [GST TYPE] [CAB TYPE]	100K0490	
	01A03003	ACCELERATOR ROD [HST TYPE]	100K0490	
	FUEL SYSTEM	01A10102	FUEL TANK [CAB TYPE]	100K0490
		01A110	FUEL PIPE AND FUEL FILTER	100K0490
	COOLING WATER SYSTEM	01A130	FUEL FILTER [COMPONENT PARTS]	100K0490
		01A401	FAN	100K0490
		01A41002	WATER PIPE [CAB TYPE]	100K0490
		01A420	RADIATOR	100K0490
	ELECTRICAL SYSTEM	01A43002	RESERVE TANK [CAB TYPE]	100K0490
01A51502		ALTERNATOR [GST TYPE] [CAB TYPE]	100K0490	
01A51503		ALTERNATOR [HST TYPE] [CAB TYPE]	100K0490	
01A52002		ALTERNATOR [COMPONENT PARTS] [CAB TYPE]	100K0490	
01A525		STARTER	100K0490	
01A530		STARTER [COMPONENT PARTS]	100K0490	
01A53502		BATTERY [CAB TYPE]	100K0490	
01B10205		SWITCH 1 [GST TYPE] [CAB TYPE]	100K0490	
01B10206	SWITCH 1 [A] [HST TYPE] [CAB TYPE] [OLD TYPE]	100K0490		
01B10207	SWITCH 1 [A] [HST TYPE] [CAB TYPE] [NEW TYPE]	100K0490		

Item	Part No.	Description	Book	
ELECTRICAL SYSTEM	01B10208	SWITCH 1 [CA] [HST TYPE] [CAB TYPE] [OLD TYPE]	100K0490	
	01B10209	SWITCH 1 [CA] [HST TYPE] [CAB TYPE] [NEW TYPE]	100K0490	
	01B10303	SWITCH 2 [GST TYPE] [CAB TYPE]	100K0490	
	01B10304	SWITCH 2 [A] [HST TYPE] [CAB TYPE]	100K0490	
	01B10305	SWITCH 2 [CA] [HST TYPE] [CAB TYPE]	100K0490	
	01B115	PANEL BOARD	100K0490	
	01B120	PANEL BOARD [COMPONENT PARTS]	100K0490	
	01B30403	LIGHT 1 [CAB TYPE]	100K0490	
	01B305	LIGHT 2 [CAB TYPE]	100K0490	
	01B32001	WORKING LIGHT [A] [CAB TYPE]	100K0490	
	01B32002	WORKING LIGHT [CA] [CAB TYPE]	100K0490	
	01B401	ROOM LIGHT [CAB TYPE]	100K0490	
	01B413	RADIO-SPEAKER COVER [CAB TYPE]	100K0490	
	01B42001	WASHER TANK [A] [CAB TYPE]	100K0490	
	01B42002	WASHER TANK [CA] [CAB TYPE]	100K0490	
	01B43001	WIPER [A] [CAB TYPE]	100K0490	
	01B43002	WIPER [CA] [CAB TYPE]	100K0490	
	01B50106	ELECTRICAL WIRING [GST TYPE] [CAB TYPE]	100K0490	
	01B50107	ELECTRICAL WIRING [HST TYPE] [CAB TYPE] [OLD TYPE]	100K0490	
	01B50108	ELECTRICAL WIRING [HST TYPE] [CAB TYPE] [OLD TYPE]	100K0490	
	01B50109	ELECTRICAL WIRING [HST TYPE] [CAB TYPE] [NEW TYPE]	100K0490	
	01B510	ELECTRICAL WIRING [CAB TYPE]	100K0490	
	CLUTCH/TRANSMISSION/REAR AXLE	01C101	CLUTCH	100K0490
		01C201	CLUTCH LEVER	100K0490
		01C30103	CLUTCH PEDAL [GST TYPE] [CAB TYPE]	100K0490
		01C30104	CLUTCH PEDAL [HST TYPE] [CAB TYPE]	100K0490
		01C40103	CLUTCH HOUSING [GST TYPE]	100K0490
		01C40104	CLUTCH HOUSING [HST TYPE]	100K0490
		01C405	GST VALVE [GST TYPE]	100K0490
		01C406	GST VALVE [GST TYPE] [COMPONENT PARTS]	100K0490
		01C407	GST VALVE [GST TYPE] [COMPONENT PARTS]	100K0490
		01C408	GST VALVE [GST TYPE] [COMPONENT PARTS]	100K0490
		01C41003	MID CASE [GST TYPE] [WITH IND-PTO]	100K0490
		01C41004	MID CASE [HST TYPE] [OLD TYPE]	100K0490
		01C41005	MID CASE [HST TYPE] [NEW TYPE]	100K0490
		01C415	HST [COMPONENT PARTS] [HST TYPE]	100K0490
01C42003		TRANSMISSION CASE [GST TYPE] [W/O MID PTO]	100K0490	
01C42005		TRANSMISSION CASE [HST TYPE] [W/O MID PTO]	100K0490	
01D10102		MAIN SHAFT [EXCEPT HST TYPE] [WITH IND-PTO]	100K0490	
01D10103		MAIN SHAFT [HST TYPE]	100K0490	
01D103		INPUT SHAFT [HST TYPE]	100K0490	
01D10502		COUNTERSHAFT [GST TYPE]	100K0490	
01D107		OUTPUT SHAFT [HST TYPE]	100K0490	
01D11002		HYDRAULIC CLUTCH [GST TYPE] [WITH IND-PTO]	100K0490	

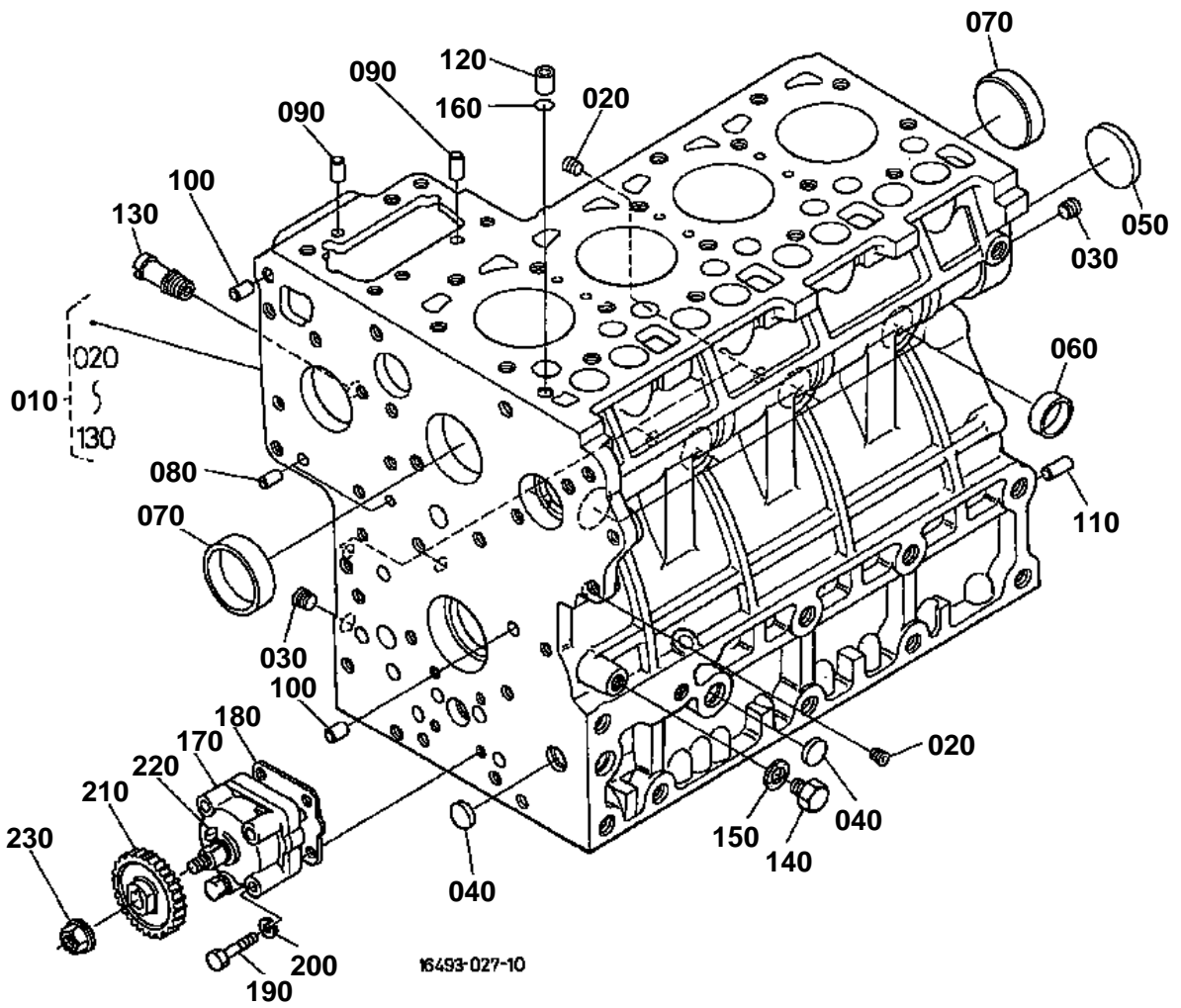
Item	Part No.	Description	Book	
CLUTCH/TRANSMISSION/REAR AXLE	01D11502	SHUTTLE SHAFT [GST TYPE]	100K0490	
	01D11702	RANGE GEAR SHAFT [GST TYPE]	100K0490	
	01D12504	SPIRAL BEVEL PINION [EXCEPT HST TYPE][WITH CREEP]	100K0490	
	01D12505	SPIRAL BEVEL PINION [HST TYPE]	100K0490	
	01D127	REAR DIFFERENTIAL	100K0490	
	01D13001	PTO COUNTERSHAFT [EXCEPT HST TYPE] [WITH IND-PTO]	100K0490	
	01D13201	PTO CLUTCH [EXCEPT HST TYPE] [WITH IND-PTO]	100K0490	
	01D13203	PTO CLUTCH [HST TYPE] [W/O IND-PTO]	100K0490	
	01D13502	PTO SHAFT [EXCEPT HST TYPE] [W/O MID PTO]	100K0490	
	01D13504	PTO SHAFT [HST TYPE] [W/O MID PTO]	100K0490	
	01D20102	MAIN GEAR SHIFT FORK [GST TYPE]	100K0490	
	01D20502	SHUTTLE SHIFT FORK [GST TYPE]	100K0490	
	01D21502	RANGE GEAR SHIFT FORK/CREEP GEAR SHIFT FORK	100K0490	
	01D217	RANGE GEAR SHIFT FORK [HST TYPE]	100K0490	
	01D22503	DIFFERENTIAL LOCK SHIFT FORK [GST TYPE] [CAB TYPE]	100K0490	
	01D22504	DIFFERENTIAL LOCK SHIFT FORK [HST TYPE] [CAB TYPE]	100K0490	
	01D30102	REAR AXLE [CAB TYPE]	100K0490	
	SPEED CHANGE LEVER/BRAKE	01D401	BRAKE	100K0490
		01D40503	BRAKE ROD 1 [GST TYPE] [CAB TYPE]	100K0490
		01D40504	BRAKE ROD 1 [HST TYPE] [CAB TYPE]	100K0490
		01D41002	BRAKE ROD 2 [GST TYPE]	100K0490
		01D41003	BRAKE ROD 2 [HST TYPE]	100K0490
		01E10103	MAIN GEAR SHIFT LEVER [GST TYPE] [CAB TYPE]	100K0490
		01E10502	SHUTTLE SHIFT LEVER [GST TYPE] [CAB TYPE]	100K0490
		01E106	CRUISE CONTROL LEVER [HST TYPE]	100K0490
		01E107	CRUISE CONTROL CABLE [HST TYPE]	100K0490
		01E108	NEUTRAL HOLDER LINK [HST TYPE]	100K0490
		01E10902	SPEED CONTROL PEDAL [HST TYPE] [CAB TYPE]	100K0490
		01E11003	RANGE GEAR SHIFT LEVER [HST TYPE] [CAB TYPE]	100K0490
		01E11201	RANGE GEAR SHIFT ROD [HST TYPE] [OLD TYPE]	100K0490
		01E11202	RANGE GEAR SHIFT ROD [HST TYPE] [NEW TYPE]	100K0490
		01E115	CREEP GEAR SHIFT LEVER [GST TYPE] [WITH CREEP]	100K0490
		01E122	PTO CLUTCH CONTROL LEVER [WITH IND-PTO]	100K0490
		01E12502	PTO GEAR SHIFT LEVER [HST TYPE]	100K0490
		01E127	PTO CLUTCH VALVE [COMPONENT PARTS] [WITH IND-PTO]	100K0490
		01E140	FRONT WHEEL DRIVE LEVER	100K0490
		FRONT AXLE/CHASSIS	01E20103	BRAKE PEDAL [GST TYPE] [CAB TYPE]
	01E20104		BRAKE PEDAL [HST TYPE] [CAB TYPE]	100K0490
	01F10502		FRONT AXLE FRAME	100K0490
	01F120		PROPELLER SHAFT	100K0490

Item	Part No.	Description	Book
FRONT AXLE/CHASSIS	01F12201	FRONT WHEEL DRIVE SHAFT [W/O MID PTO]	100K0490
	01F125	FRONT DIFFERENTIAL CASE	100K0490
STEERING	01F135	FRONT DIFFERENTIAL	100K0490
	01F140	FRONT AXLE CASE	100K0490
	01F145	DIFFERENTIAL GEAR SHAFT	100K0490
	01F150	FRONT AXLE	100K0490
	01G10103	STEERING HANDLE [GST TYPE] [CAB TYPE]	100K0490
	01G10104	STEERING HANDLE [HST TYPE] [CAB TYPE]	100K0490
	01G110	STEERING CONTROLLER	100K0490
	01G12002	STEERING LINKAGE	100K0490
	01H11002	STEERING CYLINDER	100K0490
	01H115	STEERING CYLINDER [COMPONENT PARTS]	100K0490
HYDRAULIC SYSTEM	01H12001	HYDRAULIC PUMP [EXCEPT HST TYPE]	100K0490
	01H12002	HYDRAULIC PUMP [HST TYPE]	100K0490
	01H12501	HYDRAULIC PUMP [COMPONENT PARTS] [EXCEPT HST TYPE]	100K0490
	01H12502	HYDRAULIC PUMP [COMPONENT PARTS] [HST TYPE]	100K0490
	01H145	REGULATOR VALVE [EXCEPT HST TYPE]	100K0490
	01H20501	HYDRAULIC OIL LINE(INLET) [EXCEPT HST TYPE]	100K0490
	01H20502	HYDRAULIC OIL LINE(INLET) [HST TYPE]	100K0490
	01H21001	HYDRAULIC OIL LINE(DELIVERY) [EXCEPT HST TYPE]	100K0490
	01H21002	HYDRAULIC OIL LINE(DELIVERY) [HST TYPE]	100K0490
	01H21501	HYDRAULIC OIL LINE(PS) [EXCEPT HST TYPE]	100K0490
	01H21502	HYDRAULIC OIL LINE(PS) [HST TYPE]	100K0490
	01H23003	PTO HYDRAULIC OIL LINE [GST TYPE] [WITH IND-PTO]	100K0490
	01H23501	HYDRAULIC OUTLET BLOCK [EXCEPT HST TYPE]	100K0490
	01H23502	HYDRAULIC OUTLET BLOCK [HST TYPE]	100K0490
	01H240	HYDRAULIC PIPE [HST TYPE]	100K0490
	01H24501	OIL COOLER [HST TYPE] [OLD TYPE]	100K0490
	01H24502	OIL COOLER [HST TYPE] [NEW TYPE]	100K0490
	01H301	HYDRAULIC CYLINDER	100K0490
	01H320	LIFT ARM	100K0490
	01H330	FEED BACK LEVER	100K0490
	01H405	CONTROL VALVE	100K0490
	01H410	CONTROL VALVE [COMPONENT PARTS] [OLD TYPE]	100K0490
	01H41001	CONTROL VALVE [COMPONENT PARTS] [NEW TYPE]	100K0490
	01H44002	POSITION CONTROL LEVER [CAB TYPE]	100K0490
	01H455	REMOTE CONTROL VALVE LEVER [CA] [CAB TYPE]	100K0490
	01H457	REMOTE CONTROL VALVE COUPLER [CA] [CAB TYPE]	100K0490
	01J105	TOP LINK	100K0490
01J11003	3-POINT LINKAGE 1 (LOWER LINK) [OLD TYPE]	100K0490	

Item	Part No.	Description	Book
HYDRAULIC SYSTEM	01J11004	3-POINT LINKAGE 1 (LOWER LINK) [NEW TYPE]	100K0490
	01J115	3-POINT LINKAGE 2(LIFT ROD)	100K0490
HITCH/DRAWBAR	01K105	DRAWBAR	100K0490
	01K12502	PTO PROTECTOR [CAB TYPE]	100K0490
HOOD(BONNET)/ROPS/CAB	01L101	FRONT GRILLE	100K0490
	01L10303	FRONT GRILLE SUPPORT [CAB TYPE]	100K0490
	01L10502	HOOD(BONNET) [CAB TYPE]	100K0490
	01L111	HOOD(BONNET) SIDE RH	100K0490
	01L113	HOOD(BONNET) SIDE LH	100K0490
	01L11502	SIDE COVER LOWER [CAB TYPE]	100K0490
	01L13002	SHUTTER PLATE [CAB TYPE]	100K0490
	01L22002	SEAT [CAB TYPE]	100K0490
	01L221	SEAT SUSPENSION [COMPONENT PARTS]	100K0490
	01L501	SMV EMBLEM	100K0490
	01M10101	CAB [GST TYPE] [CAB TYPE]	100K0490
	01M10102	CAB [HST TYPE] [CAB TYPE]	100K0490
	01M105	BONNET(CAB) [CAB TYPE]	100K0490
	01M110	FLOOR SEAT COVER [CAB TYPE]	100K0490
	01M115	DOOR LH [CAB TYPE]	100K0490
	01M120	DOOR RH [CAB TYPE]	100K0490
	01M130	DOOR LOCK LH [CAB TYPE]	100K0490
	01M140	DOOR LOCK RH [CAB TYPE]	100K0490
	01M145	INNER ROOF [CAB TYPE]	100K0490
	01M150	OUTER ROOF [CAB TYPE]	100K0490
	01M15501	MAT [GST TYPE] [CAB TYPE]	100K0490
	01M15502	MAT [HST TYPE] [CAB TYPE]	100K0490
	01M16001	CAB BRACKET [GST TYPE] [CAB TYPE]	100K0490
	01M16002	CAB BRACKET [HST TYPE] [CAB TYPE]	100K0490
	01M201	FRONT GLASS [CAB TYPE]	100K0490
	01M20501	GLASS LH [A] [CAB TYPE]	100K0490
	01M20502	GLASS LH [CA] [CAB TYPE]	100K0490
	01M21001	GLASS RH [A] [CAB TYPE]	100K0490
	01M21002	GLASS RH [CA] [CAB TYPE]	100K0490
	01M22501	HATCH BACK GLASS [A] [CAB TYPE]	100K0490
	01M22502	HATCH BACK GLASS [CA] [CAB TYPE]	100K0490
	01M301	REARVIEW MIRROR [CAB TYPE]	100K0490
AIR CONDITIONER	01N105	AIR CONDITIONER [CAB TYPE]	100K0490
	01N110	DRAIN HOSE(AIR CONDITIONER) [CAB TYPE]	100K0490
	01N115	HEATER HOSE [CAB TYPE]	100K0490
	01N120	CONDENSER [CAB TYPE]	100K0490
	01N125	COMPRESSOR [CAB TYPE]	100K0490
FRONT WHEEL/REAR WHEEL	01P10103	FRONT WHEEL (8.3-16)	100K0490
	01P10104	FRONT WHEEL (10-16.5)	100K0490
	01P10105	FRONT WHEEL (27*8.5-15)	100K0490
	01P10106	FRONT WHEEL (27*10.50-15)	100K0490
	01P10107	FRONT WHEEL (29*12.50-15)	100K0490
	01P11002	REAR WHEEL (13.6-24)	100K0490
	01P11003	REAR WHEEL (14.9-24)	100K0490
	01P11004	REAR WHEEL (17.5-24)	100K0490
	01P11005	REAR WHEEL (41*14.00-20)	100K0490
	01P11006	REAR WHEEL (21.5L-16.1) [OLD TYPE]	100K0490
	01P11007	REAR WHEEL (21.5L-16.1) [NEW TYPE]	100K0490
LABELS	01R10507	LABEL 1 [A] [GST TYPE] [CAB TYPE]	100K0490
	01R10508	LABEL 1 [CA] [GST TYPE] [CAB TYPE]	100K0490

Item	Part No.	Description	Book
LABELS	01R10509	LABEL 1 [A] [HST TYPE] [CAB TYPE]	100K0490
	01R10510	LABEL 1 [CA] [HST TYPE] [CAB TYPE]	100K0490
	01R11007	LABEL 2 [A] [GST TYPE] [CAB TYPE]	100K0490
	01R11008	LABEL 2 [CA] [GST TYPE] [CAB TYPE]	100K0490
	01R11009	LABEL 2 [A] [HST TYPE] [CAB TYPE]	100K0490
	01R11010	LABEL 2 [CA] [HST TYPE] [CAB TYPE]	100K0490
ACCESSORIES OPTION	01S105	ACCESSORIES AND SERVICE PARTS	100K0490
	01T103	AIR CLEANER COVER KIT [OPTION]	100K0490
	01T105	WORKING LIGHT KIT [CAB TYPE]	100K0490
		[[A]OPTION]	
	01T108	SWITCH KIT [OPTION]	100K0490
	01T110	SPEAKER KIT [CAB TYPE] [[A]OPTION]	100K0490
	01T115	REAR WIPER KIT [CAB TYPE]	100K0490
		[[A]OPTION]	
	01T117	GLASS [CAB TYPE] [[A]OPTION]	100K0490
	01T120	FRONT GUARD STAY KIT [OPTION]	100K0490
	01T130	POSITION CONTROL LEVER (WITH	100K0490
		DRAFT) [OPTION]	
	01T135	DRAFT CONTROL LEVER (WITH DRAFT)	100K0490
		[OPTION]	
	01T140	TOP LINK HOLDER (WITH DRAFT)	100K0490
		[OPTION]	
	01T145	SWINGING DRAWBAR/CLEVIS DRAWBAR	100K0490
		[OPTION]	
	01T15002	REMOTE CONTROL VALVE LEVER 1	100K0490
		[CAB TYPE] [[A]OPTION]	
01T15004	REMOTE CONTROL VALVE LEVER 2	100K0490	
	[CAB TYPE] [[A]OPTION]		
01T15006	REMOTE CONTROL VALVE LEVER 3	100K0490	
	[CAB TYPE] [OPTION]		
01T15501	REMOTE CONTROL VALVE COUPLER 1	100K0490	
	[OPTION]		
01T15502	REMOTE CONTROL VALVE COUPLER 2	100K0490	
	[OPTION]		
01T15503	REMOTE CONTROL VALVE COUPLER 3	100K0490	
	[OPTION]		

CRANKCASE

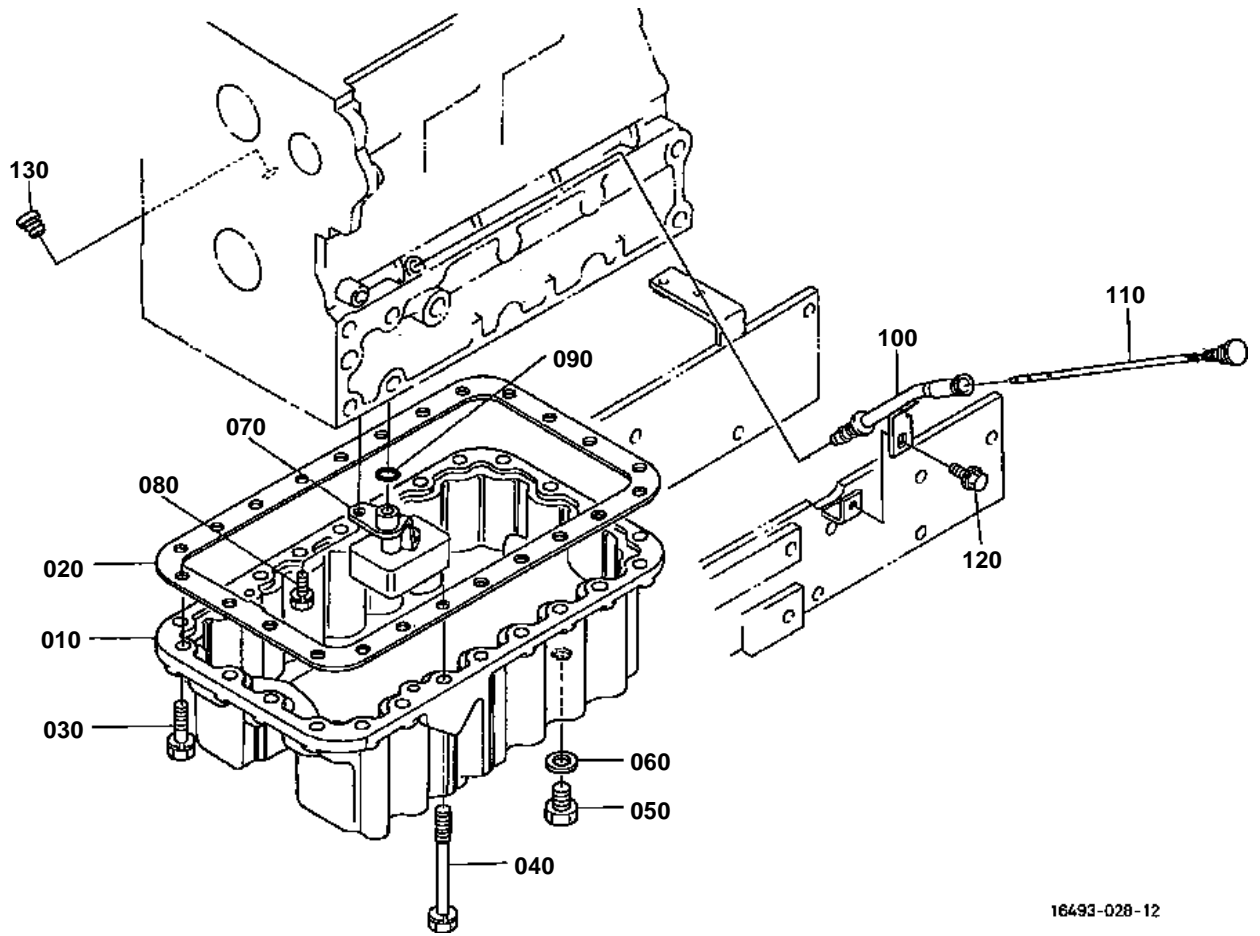


**CRANKCASE**

↔ Interchangeable; ≠ not interchangeable; ← new for old; → old for new

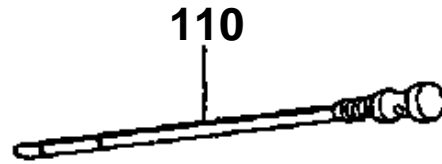
REF.No	Part No.	Description	Q'ty	S.No.	I/C	REMARKS	Weight (kgf)	Weight (lb)
010	16423-01010	COMP.CRANKCASE	1				0	0
010	16423-01012	COMP.CRANKCASE	1	<=1Y2848	↔		49	107.8
010	16423-01014	COMP.CRANKCASE	1	>=2A0001	←		49	107.8
020	15521-96020	PLUG	6				0.003	0.0066
030	15521-96030	PLUG	2				0.007	0.0154
040	17391-96160	PLUG EXPANSION	3				0.003	0.0066
050	06311-75045	PLUG EXPANSION	1				0.026	0.0572
060	15221-03380	CAP SEALING	6				0.017	0.0374
070	15221-03390	CAP SEALING	2				0.03	0.066
080	05012-00408	PIN STRAIGHT	2				0.001	0.0022
090	05012-00609	PIN STRAIGHT	2				0.003	0.0066
100	05012-00612	PIN STRAIGHT	2				0.003	0.0066
110	05012-01018	PIN STRAIGHT	1				0.012	0.0264
120	15221-33650	PIN PIPE	1				0.004	0.0088
130	15321-73340	PIPE WATER RETURN	1				0.016	0.0352
140	15221-33610	PLUG	1				0.009	0.0198
150	15021-33660	GASKET	1				0.001	0.0022
160	15221-33700	O RING	1				0.001	0.0022
170	15471-35012	ASSY PUMP OIL	1				0.55	1.21
180	15296-35150	GASKET OIL PUMP	1				0	0
180	1A021-35150	GASKET OIL PUMP	1		↔		0.001	0.0022
190	01053-50650	BOLT	4				0.011	0.0242
200	04512-60060	WASHER SPRING	4				0.001	0.0022
210	19202-35660	GEAR OIL PUMP DRIVE	1				0.23	0.506
220	05712-00410	KEY FEATHER	1				0.001	0.0022
230	15221-35682	NUT FLANGE	1				0.014	0.0308

OIL PAN



16493-028-12

110 TA140-3641-0



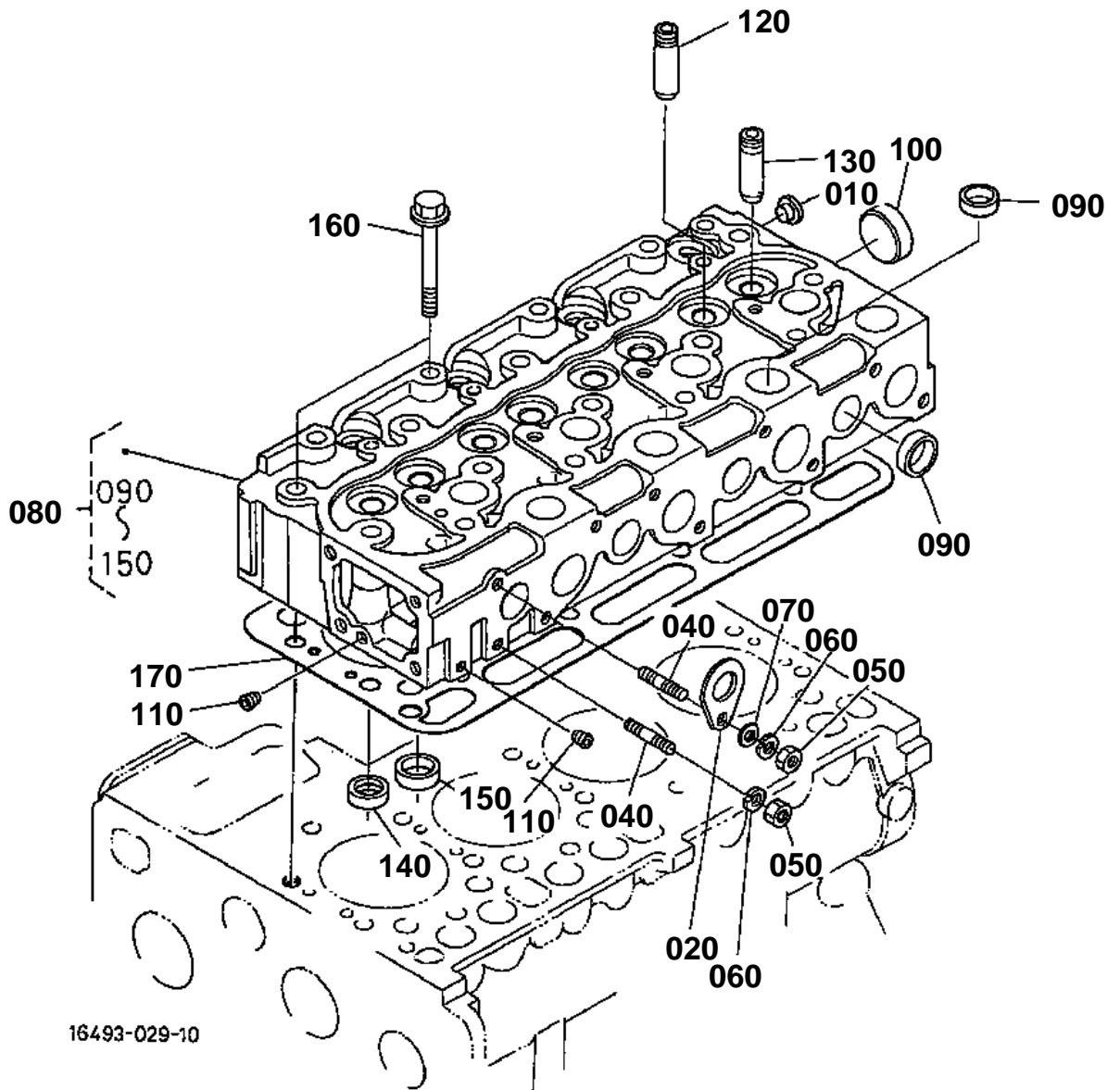
TA140-802-10

**OIL PAN**

↔ Interchangeable; ≠ not interchangeable; ← new for old; → old for new

REF.No	Part No.	Description	Q'ty	S.No.	I/C	REMARKS	Weight (kgf)	Weight (lb)
010	17341-01610	OIL PAN	1				4.1	9.02
020	15815-01620	GASKET OIL PAN	1				0.03	0.066
030	01133-51028	BOLT	22				0.027	0.0594
040	17377-91010	BOLT	2				0.08	0.176
050	15261-33750	PLUG	2	<=YJ3494			0.034	0.0748
050	16427-33750	PLUG DRAIN	2	>=YL0001	←		0	0
060	15109-33660	GASKET	2	<=3351			0.001	0.0022
060	6C090-58960	GASKET	2	>=3352	←		0.002	0.0044
070	15411-32110	FILTER OIL	1				0.24	0.528
080	01123-60814	BOLT	1				0.008	0.0176
090	04811-00160	O RING	1				0	0
090	04817-00160	O RING	1		←		0	0
100	TA140-36420	GUIDE OIL GAUGE	1				0.067	0.1474
110	TA140-36410	GAUGE OIL	1	<=2927			0	0
110	TA140-36413	GAUGE OIL	1	>=2928	←		0.025	0.055
120	01754-50816	BOLT FLANGE	1				0.011	0.0242
130	16414-33640	PLUG OIL GAUGE	1	>=2A0001			0.003	0.0066

CYLINDER HEAD



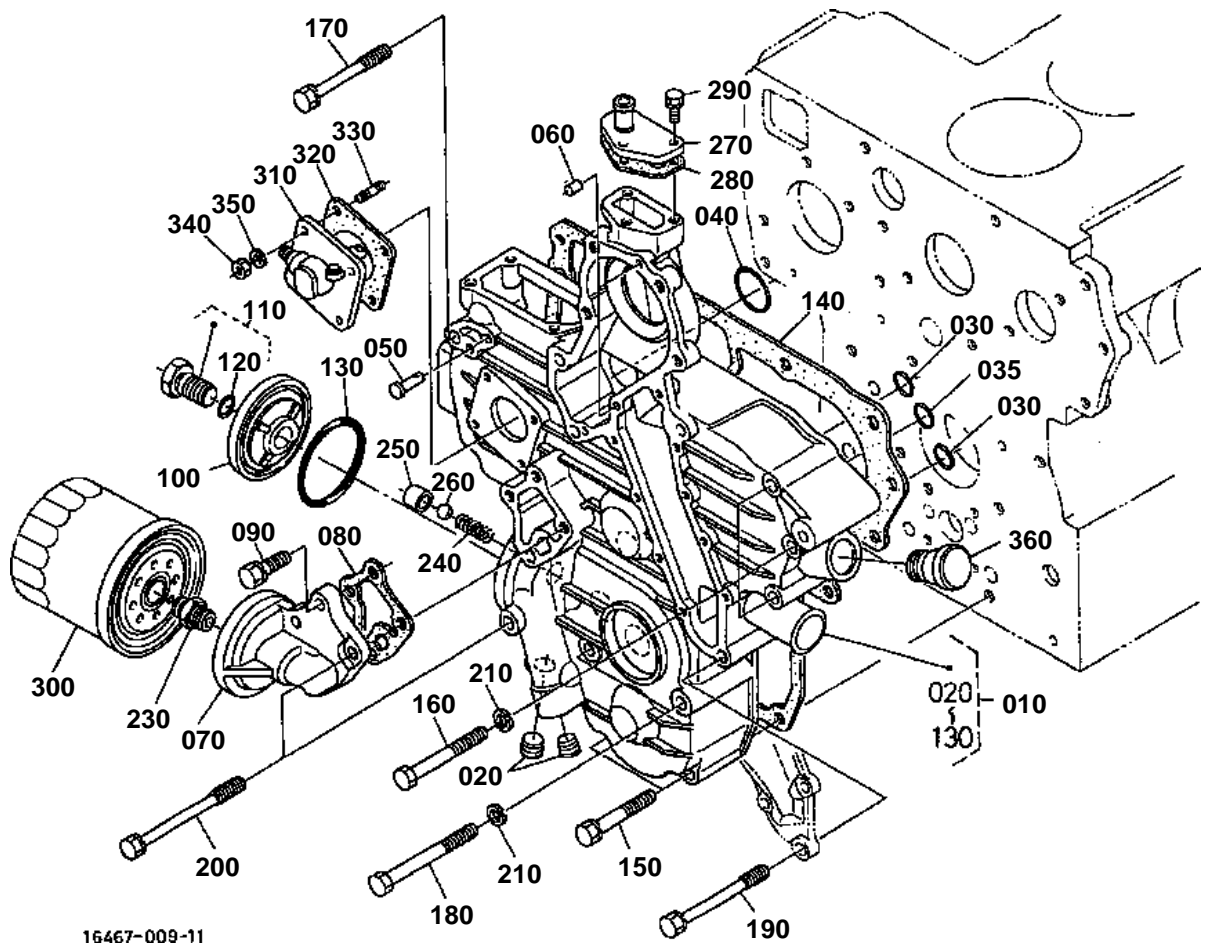


CYLINDER HEAD

↔ Interchangeable; ≠ not interchangeable; ← new for old; → old for new

REF.No	Part No.	Description	Q'ty	S.No.	I/C	REMARKS	Weight (kgf)	Weight (lb)
010	09980-10075	CAP PROTECTOR	1				0.001	0.0022
020	15221-01750	HOOK ENGINE	1				0.04	0.088
030	99999-99999	BLANK	0				0	0
040	15471-91530	STUD	2				0.01	0.022
050	02156-50080	NUT	2				0.004	0.0088
060	04512-60080	WASHER SPRING	2				0.002	0.0044
070	04012-50080	WASHER PLAIN	1				0.001	0.0022
080	16429-03040	COMP.CYLINDER HEAD	1				19.1	42.02
090	15221-03370	CAP SEALING	12				0.01	0.022
100	15221-03490	CAP SEALING	1				0.02	0.044
110	15261-96010	PLUG	2				0.002	0.0044
120	17321-13580	GUIDE INLET VALVE	4				0.015	0.033
130	17321-13560	GUIDE EXHAUST VALVE	4				0.02	0.044
140	16415-13620	SEAT INLET VALVE	4				0.01	0.022
150	16415-13612	SEAT EXHAUST VALVE	4				0.01	0.022
160	19013-03450	BOLT CYLINDER HEAD	18				0.077	0.1694
170	19077-03310	GASKET CYLINDER HEAD	1				0.13	0.286

GEAR CASE



16467-009-11

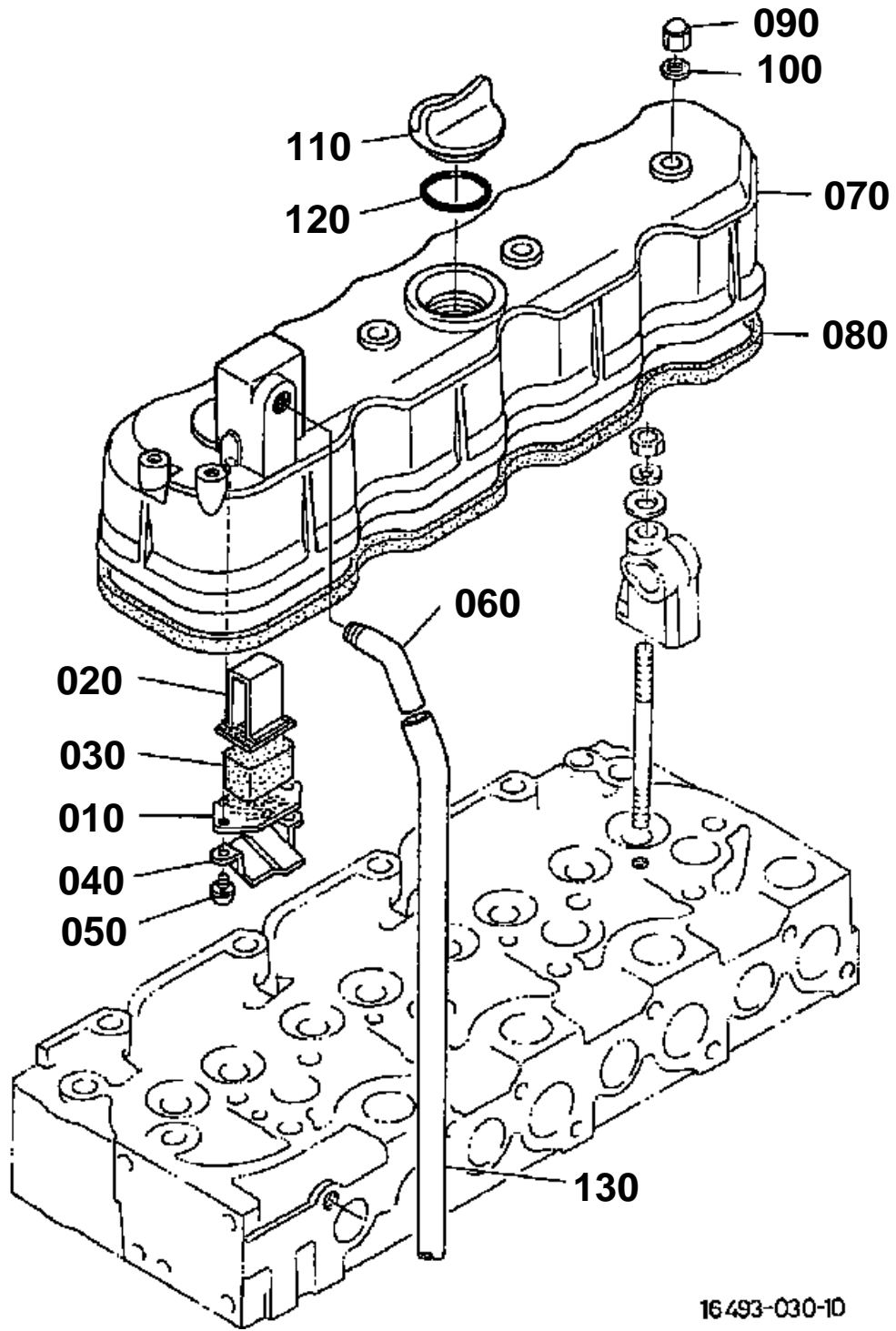


GEAR CASE

↔ Interchangeable; ≠ not interchangeable; ← new for old; → old for new

REF.No	Part No.	Description	Q'ty	S.No.	I/C	REMARKS	Weight (kgf)	Weight (lb)
010	16705-04032	ASSY CASE GEAR	1				4.2	9.24
020	16241-96020	PLUG	2				0.015	0.033
030	04811-00150	O RING	2				0.001	0.0022
030	04817-00150	O RING	2		←		0	0
035	04811-00200	O RING	1				0	0
035	04817-00200	O RING	1		←		0	0
040	04816-00360	O RING	1				0.003	0.0066
040	04817-00360	O RING	1		←		0	0
050	15221-56280	PIN START SPRING	1				0.006	0.0132
060	05012-00612	PIN STRAIGHT	2				0.003	0.0066
070	17331-32610	SUPPORT OIL FILTER	1				0.275	0.605
080	17326-32620	GASKET	1				0.005	0.011
090	01123-50825	BOLT	3				0.013	0.0286
100	17331-32880	COVER	1				0.075	0.165
110	17331-32910	COMP BOLT	1				0.07	0.154
120	04811-00150	O RING	1				0.001	0.0022
120	04817-00150	O RING	1		←		0	0
130	19202-96830	O RING	1				0.01	0.022
140	17326-04132	GASKET GEAR CASE	1				0.03	0.066
150	01123-50860	BOLT	3				0.026	0.0572
160	01153-50870	BOLT	3				0.026	0.0572
170	17367-91010	BOLT	2				0.005	0.011
180	01153-50880	BOLT	2				0.03	0.066
190	17367-91020	BOLT	3				0.035	0.077
200	17367-91030	BOLT	2				0.02	0.044
210	04512-60080	WASHER SPRING	5				0.002	0.0044
220	99999-99999	BLANK	0				0	0
230	15521-32290	JOINT PIPE	1	<=YW4276			0	0
230	15521-32293	JOINT PIPE	1	>=YY0001	←		0	0
240	15241-36950	SPRING	1				0.004	0.0088
250	15521-36930	SEAT VALVE	1				0.015	0.033
260	07715-03213	BALL	1				0.004	0.0088
270	15521-73320	FLANGE WATER RETURN	1				0.04	0.088
280	15766-73330	GASKET WATER FLANGE	1				0	0
280	1A021-73330	GASKET RETURN FLANGE	1		↔		0.001	0.0022
290	01023-50620	BOLT	3				0.006	0.0132
300	17321-32430	CARTRIDGE OIL FILTER	1				0	0
300	16414-32430	CARTRIDGE OIL FILTER	1		↔		0	0
310	38240-34660	ASSY GEAR CASE H/M	1				0.335	0.737
320	15296-88130	GASKET H/METER UNIT	1				0.002	0.0044
330	15221-88210	STUD	4				0.005	0.011
340	02056-50060	NUT	4				0.002	0.0044
350	04512-60060	WASHER SPRING	4				0.001	0.0022
360	15571-33140	PLUG OIL FILLER	1	<=1L4203			0.03	0.066
360	16427-33140	PLUG OIL FILLER	1	>=1N0001	←		0.025	0.055

HEAD COVER



16.493-030-10

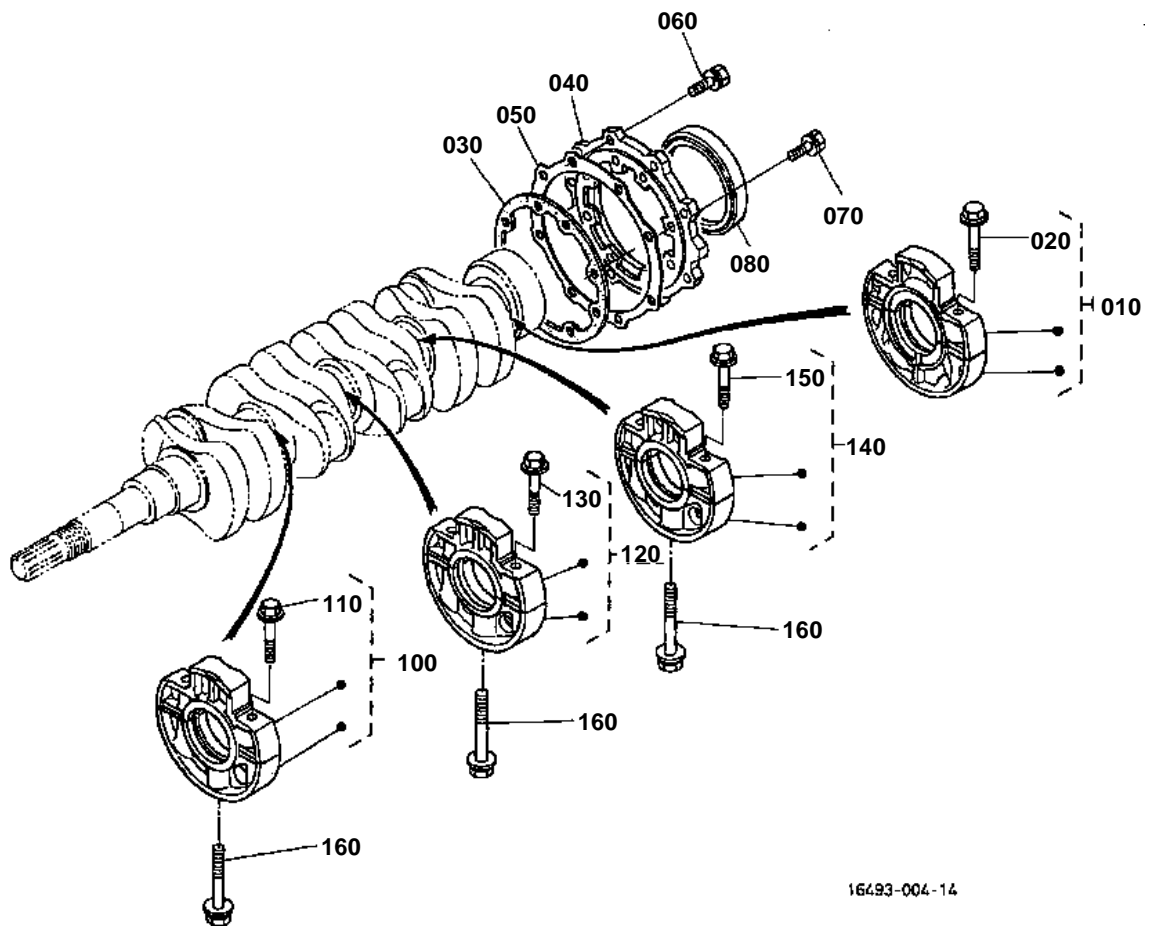


HEAD COVER

↔ Interchangeable; ≠ not interchangeable; ← new for old; → old for new

REF.No	Part No.	Description	Q'ty	S.No.	I/C	REMARKS	Weight (kgf)	Weight (lb)
010	15521-05140	PLATE B/THER ELEMENT	1				0.005	0.011
020	15521-05150	PLATE B/THER ELEMENT	1				0.01	0.022
030	15521-05670	ELEMENT BREATHER	1				0.01	0.022
040	15521-05370	OIL SHIELD BREATHER	1				0.005	0.011
050	03034-50510	SCREW WITH WASHER	2				0.003	0.0066
060	17365-05550	JOINT BREATHER	1				0.065	0.143
070	15434-14510	COVER CYL.HEAD	1				1.315	2.893
080	15471-14520	GASKET HEAD COVER	1				0.05	0.11
090	15451-92330	NUT	4				0.015	0.033
100	15021-33660	GASKET	4				0.001	0.0022
110	15852-33140	PLUG OIL FILLER	1				0.038	0.0836
120	04811-50300	O RING	1				0	0
120	04817-50300	O RING	1		←		0.001	0.0022
130	15837-05510	PIPE BREATHER	1				0.06	0.132

MAIN BEARING CASE





Download the full PDF manual instantly.

Our customer service e-mail:

aservicemanualpdf@yahoo.com