

Instructions for Parts Books

The heading at the top of the page will be the same for the picture of the parts as it is for the page with the part numbers.

Definition of column headings on part number pages:

REF.No → The number referring to the part on the picture page of the parts book.

Part No. → The number assigned to this part at the time of printing the parts book.

Description → Description of part.

Q'ty → Quantity of part used on that page.

S.No. → Serial number range of the equipment that this part will fit.

>= Your serial number should be greater than or equal to the number shown.

<= Your serial number should be lesser than or equal to the serial number shown.

I/C → Interchangeability of part shown.

↔ The part shown will work for the older and later serial number.

The part shown is not interchangeable with the other serial number.

← new for old

→ old for new

Remarks → Notes about this particular part. Sometimes this may say except [FR] or [CA]

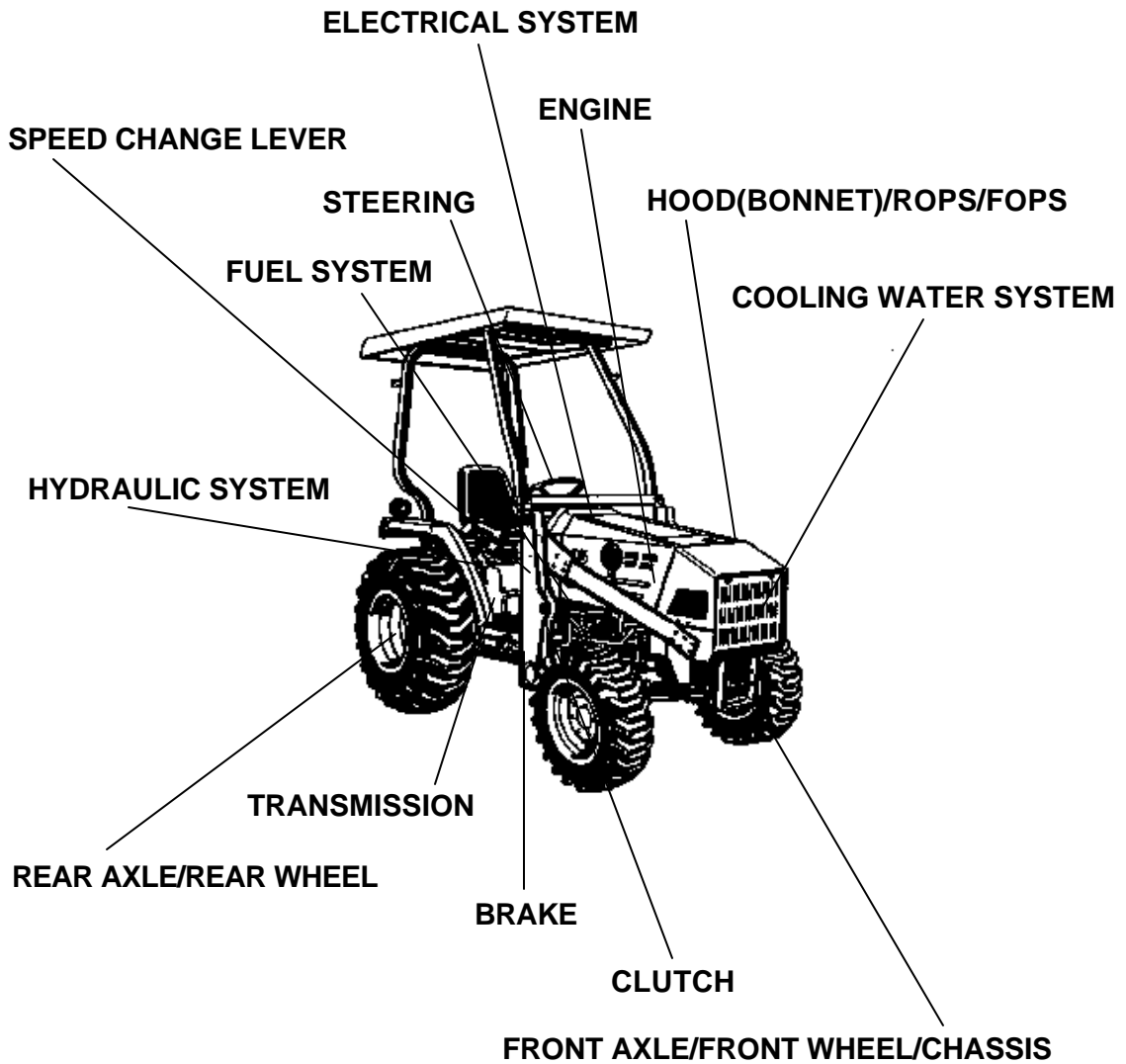
Note about Country Codes:

The parts books we use in the United States of America may also contain information about a part that would be different in another country. It is important that you are aware of the country codes in some instances.

Symbol	Country
A	United States of America
CA	Canada
FR	France
GR	Greece
PO	Portugal
AU	Australia

If the remarks column says for example EXCEPT [FR] this part works in all countries except France. That means it will work here in the USA.

ALL PRODUCT INDEX
L35



LABELS

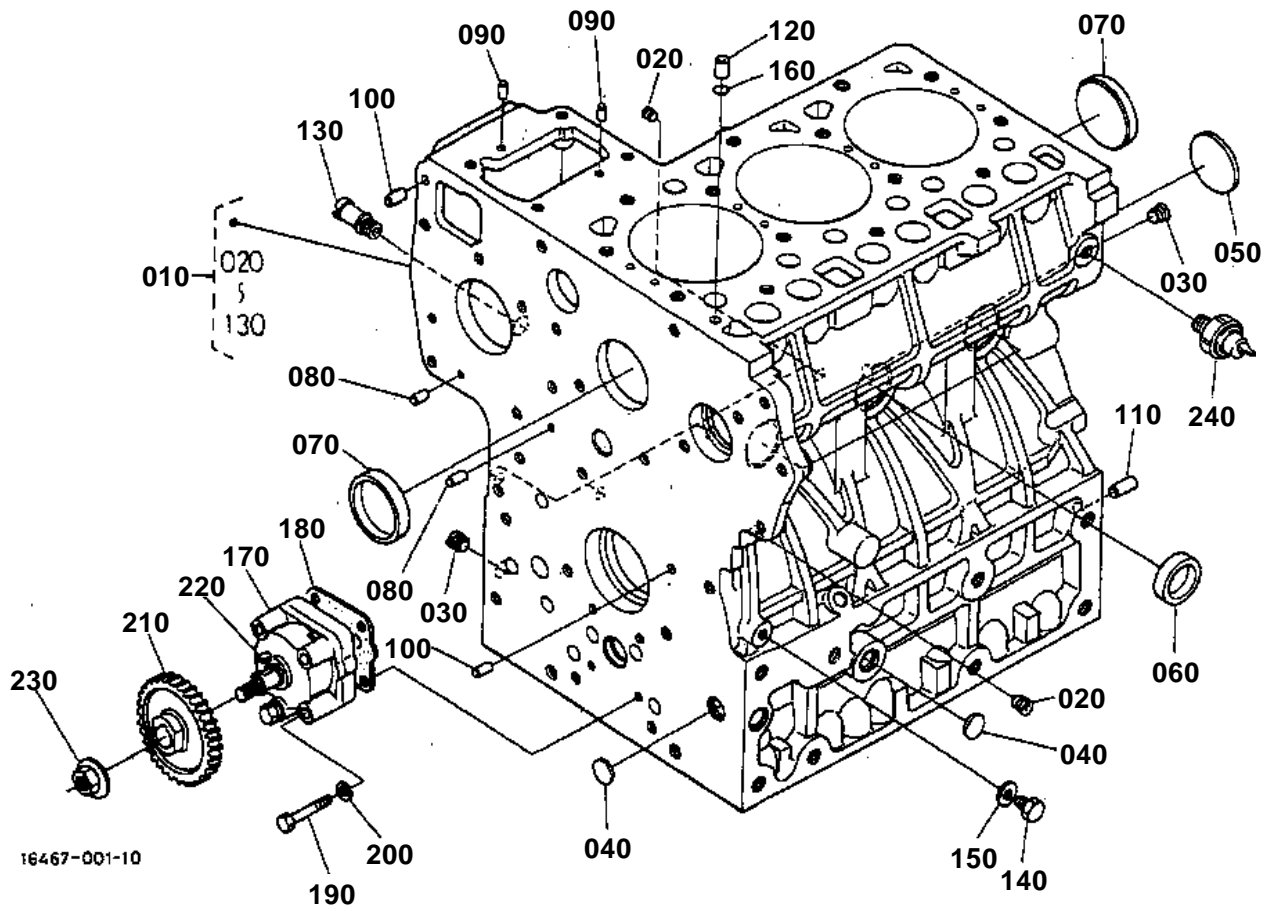
ACCESSORIES

Item	Part No.	Description	Book	
ENGINE	01T001	CRANKCASE	100K0361	
	01T002	OIL PAN	100K0361	
	01T003	PISTON AND CRANKSHAFT	100K0361	
	01T004	MAIN BEARING CASE [OLD TYPE]	100K0361	
	01T00401	MAIN BEARING CASE [NEW TYPE]	100K0361	
	01T005	FLYWHEEL	100K0361	
	01T006	CYLINDER HEAD	100K0361	
	01T007	VALVE AND ROCKER ARM [OLD TYPE]	100K0361	
	01T00701	VALVE AND ROCKER ARM [NEW TYPE]	100K0361	
	01T008	NOZZLE HOLDER AND GLOW PLUG	100K0361	
	01T009	NOZZLE HOLDER [COMPONENT PARTS]	100K0361	
	01T010	CYLINDER HEAD COVER [OLD TYPE]	100K0361	
	01T01001	CYLINDER HEAD COVER [NEW TYPE]	100K0361	
	01T011	INLET MANIFOLD	100K0361	
	02T012	AIR CLEANER	100K0361	
	02T013	EXHAUST MANIFOLD AND MUFFLER	100K0361	
	01T014	CAMSHAFT	100K0361	
	01T015	GEAR CASE	100K0361	
	01T016	WATER PUMP	100K0361	
	01T017	WATER FLANGE AND THERMOSTAT	100K0361	
	01T018	FUEL CAMSHAFT	100K0361	
	01T019	INJECTION PUMP	100K0361	
	01T021	ENGINE STOP LEVER	100K0361	
	01T022	SPEED CONTROL PLATE	100K0361	
	01T023	GOVERNOR	100K0361	
	01T024	UPPER GASKET KIT	100K0361	
	01T025	LOWER GASKET KIT	100K0361	
	02T026	STOP SELENOID AND ENGINE STOP WIRE	100K0361	
	02T027	ACCELERATOR LEVER	100K0361	
	02T028	ACCELERATOR LINKAGE	100K0361	
	02T029	ACCELERATOR ROD	100K0361	
	FUEL SYSTEM	02T030	FUEL TANK	100K0361
		02T031	FUEL FILTER AND FUEL PIPE	100K0361
		02T032	FUEL FILTER [COMPONENT PARTS]	100K0361
	COOLING WATER SYSTEM	02T033	FAN	100K0361
		02T034	WATER PIPE	100K0361
		02T035	RADIATOR	100K0361
		02T036	RESERVE TANK	100K0361
	ELECTRICAL SYSTEM	02T037	ALTERNATOR	100K0361
		02T038	ALTERNATOR [COMPONENT PARTS]	100K0361
		02T039	STARTER	100K0361
		02T040	STARTER [COMPONENT PARTS]	100K0361
		02T041	BATTERY	100K0361
		02T042	SWITCH	100K0361
		02T043	PANEL BOARD	100K0361
		02T044	PANEL BOARD [COMPONENT PARTS]	100K0361
		02T045	LIGHT [OLD TYPE]	100K0361
		02T04501	LIGHT [NEW TYPE]	100K0361
02T046	ELECTRICAL WIRING [OLD TYPE]	100K0361		
02T04601	ELECTRICAL WIRING [NEW TYPE]	100K0361		
CLUTCH	02T047	CLUTCH	100K0361	
	02T048	CLUTCH LEVER	100K0361	

Item	Part No.	Description	Book	
CLUTCH	02T049	CLUTCH PEDAL	100K0361	
	02T050	CLUTCH HOUSING	100K0361	
	02T051	MID CASE	100K0361	
TRANSMISSION	02T052	TRANSMISSION CASE	100K0361	
	02T053	MAIN SHAFT	100K0361	
	02T054	COUNTERSHAFT	100K0361	
	02T055	HYDRAULIC CLUTCH	100K0361	
	02T056	SHUTTLE SHAFT	100K0361	
	02T057	RANGE GEAR SHAFT	100K0361	
	02T058	PTO COUNTERSHAFT AND ONE WAY CLUTCH	100K0361	
	02T059	PTO SHAFT	100K0361	
SPEED CHANGE LEVER	02T060	MAIN GEAR SHIFT LEVER	100K0361	
	02T06001	GST SHIFT COVER [OPTION]	100K0361	
	02T061	MAIN GEAR SHIFT FORK	100K0361	
	02T062	SHUTTLE GEAR SHIFT LEVER	100K0361	
	02T063	SHUTTLE GEAR SHIFT FORK	100K0361	
	02T064	RANGE GEAR SHIFT FORK	100K0361	
	02T065	PTO GEAR SHIFT LEVER	100K0361	
	02T066	PTO GEAR SHIFT FORK	100K0361	
	02T067	SPIRAL BEVEL PINION	100K0361	
	02T068	REAR DIFFERENTIAL	100K0361	
REAR AXLE/REAR WHEEL	02T069	DEFFERENTIAL LOCK SHIFT FORK	100K0361	
	02T070	REAR AXLE	100K0361	
BRAKE	02T071	REAR WHEEL (15-19.5)	100K0361	
	02T072	BRAKE	100K0361	
	02T073	BRAKE PEDAL	100K0361	
FRONT AXLE/FRONT WHEEL/CHASSIS	02T074	BRAKE ROD	100K0361	
	02T075	FRONT AXLE	100K0361	
	02T076	FRONT AXLE CASE	100K0361	
	02T077	DIFFERENTIAL GEAR SHAFT	100K0361	
	02T078	FRONT DIFFERENTIAL CASE	100K0361	
	02T079	FRONT DIFFERENTIAL	100K0361	
	02T080	PROPELLER SHAFT	100K0361	
	02T081	FRONT WHEEL DRIVE SHAFT	100K0361	
	02T082	FRONT WHEEL DRIVE LEVER	100K0361	
	02T083	FRONT WHEEL (27X10.5-15)	100K0361	
	02T084	FRONT AXLE FRAME	100K0361	
	STEERING	02T085	STEERING LINKAGE	100K0361
		02T086	STEERING CYLINDER	100K0361
		02T087	STEERING CYLINDER [COMPONENT PARTS]	100K0361
		02T088	STEERING CONTROLLER	100K0361
	HYDRAULIC SYSTEM	02T089	STEERING HANDLE	100K0361
		02T090	HYDRAULIC OIL LINE (PS)	100K0361
02T091		GST VALVE	100K0361	
02T09101		GST VALVE [GST TYPE] [COMPONENT PARTS]	100K0361	
02T09102		GST VALVE [GST TYPE] [COMPONENT PARTS]	100K0361	
02T09103		GST VALVE [GST TYPE] [COMPONENT PARTS]	100K0361	
02T092		REGULATOR VALVE	100K0361	

Item	Part No.	Description	Book	
HYDRAULIC SYSTEM	02T093	HYDRAULIC PUMP	100K0361	
	02T094	HYDRAULIC PUMP [COMPONENT PARTS]	100K0361	
	02T095	HYDRAULIC PUMP	100K0361	
	02T096	HYDRAULIC PUMP [COMPONENT PARTS]	100K0361	
	02T097	HYDRAULIC OIL LINE (INLET)	100K0361	
	02T098	HYDRAULIC OIL LINE (DELIVERY)	100K0361	
	02T099	HYDRAULIC CYLINDER	100K0361	
	02T100	LIFT ARM	100K0361	
	02T101	CONTROL VALVE	100K0361	
	02T102	CONTROL VALVE [COMPONENT PARTS]	100K0361	
	02T103	POSITION CONTROL LEVER	100K0361	
	02T104	FEED BACK LEVER	100K0361	
	02T105	DIRECTIONAL VALVE LEVER	100K0361	
	02T106	3-POINT LINKAGE 1 (LOWER LINK)	100K0361	
	02T107	3-POINT LINKAGE 2 (LIFT ROD)	100K0361	
	02T108	TOP LINK HOLDER AND PTO PROTECTOR	100K0361	
	HOOD(BONNET)/ROPS/FOPS	02T109	FRONT GRILLE	100K0361
		02T110	HOOD (BONNET) AND SIDE COVER	100K0361
02T111		SHUTTER PLATE	100K0361	
02T112		PANEL FRAME	100K0361	
02T113		FENDER	100K0361	
02T114		FLOOR SEAT	100K0361	
02T115		SEAT	100K0361	
02T116		REVERSIBLE SEAT BASE [COMPONENT PARTS]	100K0361	
02T117		STEP	100K0361	
02T118	MAIN FRAME	100K0361		
02T119	ROPS AND FOPS	100K0361		
LABELS	02T120	LABEL 1	100K0361	
	02T121	LABEL 2	100K0361	
ACCESSORIES	02T122	ACCESSORIES AND SERVICE PARTS	100K0361	

CRANKCASE



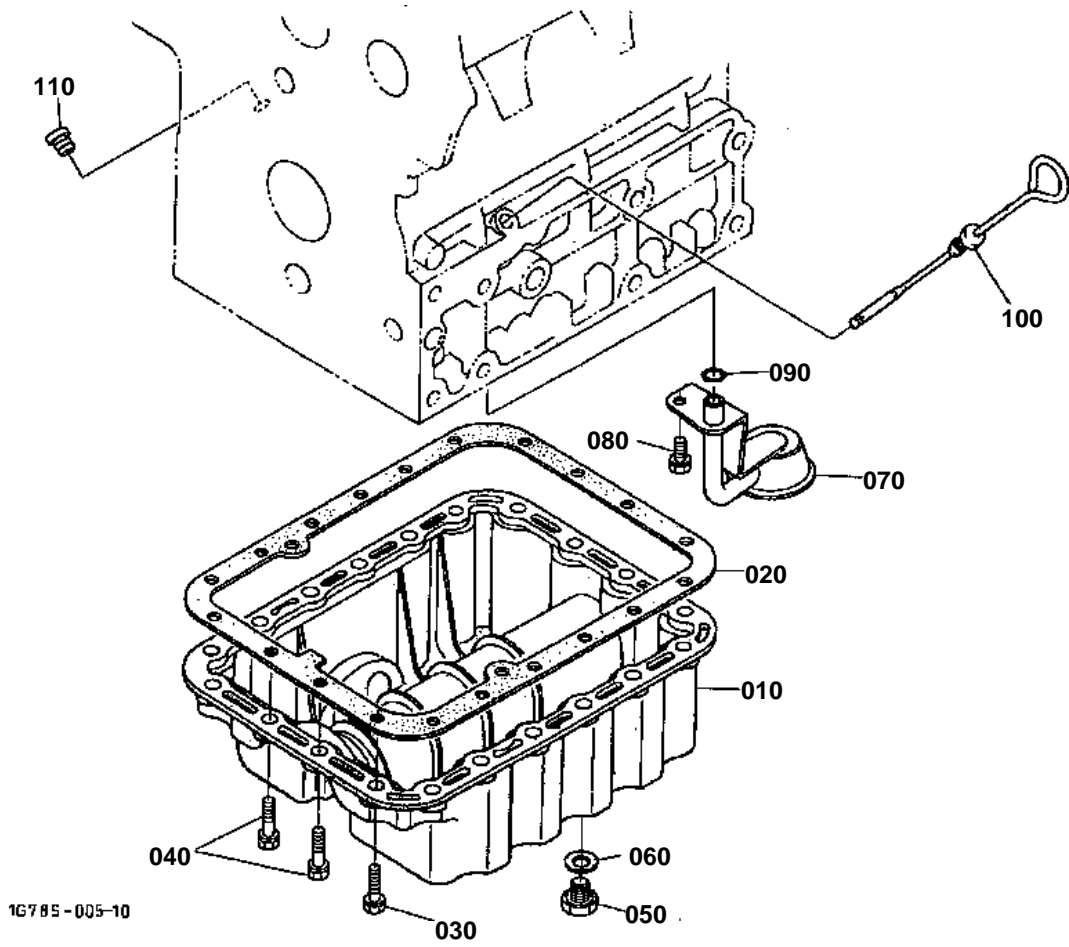


CRANKCASE

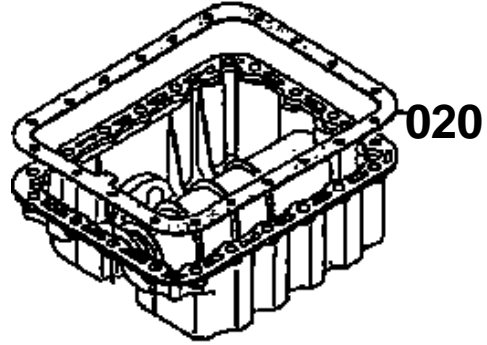
↔ Interchangeable; ≠ not interchangeable; ← new for old; → old for new

REF.No	Part No.	Description	Q'ty	S.No.	I/C	REMARKS	Weight (kgf)	Weight (lb)
010	16487-01010	COMP.CRANKCASE	1	<=1Y0497			48.5	106.7
010	16487-01016	COMP.CRANKCASE	1	>=2A0001	→		48.5	106.7
010	16487-01017	COMP.CRANKCASE	1	>=3S0001	1		54	118.8
020	15521-96020	PLUG	5				0.003	0.0066
030	15521-96030	PLUG	2				0.007	0.0154
040	17391-96160	PLUG	3				0.003	0.0066
050	06311-75045	PLUG	1	<=3G0450			0.026	0.0572
050	16271-96160	PLUG EXPANSION	1	>=3J0001	1		0.025	0.055
060	15221-03380	CAP SEALING	5				0.017	0.0374
070	15221-03390	CAP SEALING	2				0.03	0.066
080	05012-00408	PIN STRAIGHT	2				0.001	0.0022
090	05012-00609	PIN STRAIGHT	2				0.003	0.0066
100	05012-00612	PIN STRAIGHT	2				0.003	0.0066
110	05012-01018	PIN STRAIGHT	1				0.012	0.0264
120	15221-33650	PIN PIPE	1				0.004	0.0088
130	15321-73340	PIPE WATER RETURN	1				0.016	0.0352
140	15221-33610	PLUG	1				0.009	0.0198
150	15021-33660	GASKET	1				0.001	0.0022
160	15221-33700	O RING	1				0.001	0.0022
170	15471-35010	ASSY PUMP OIL	1				0	0
170	15471-35012	ASSY PUMP OIL	1		«		0.55	1.21
180	15296-35150	GASKET OIL PUMP	1				0	0
180	1A021-35150	GASKET OIL PUMP	1		«		0.001	0.0022
190	01053-50650	BOLT	4				0.011	0.0242
200	04512-50060	WASHER SPRING	4				0	0
210	19202-35660	GEAR OIL PUMP DRIVE	1				0.23	0.506
220	05712-00410	KEY FEATHER	1				0.001	0.0022
230	15221-35682	NUT FLANGE	1				0.014	0.0308
240	15531-39010	SWITCH OIL	1				0.032	0.0704

OIL PAN



020 17326-0162-0



16467-813-20

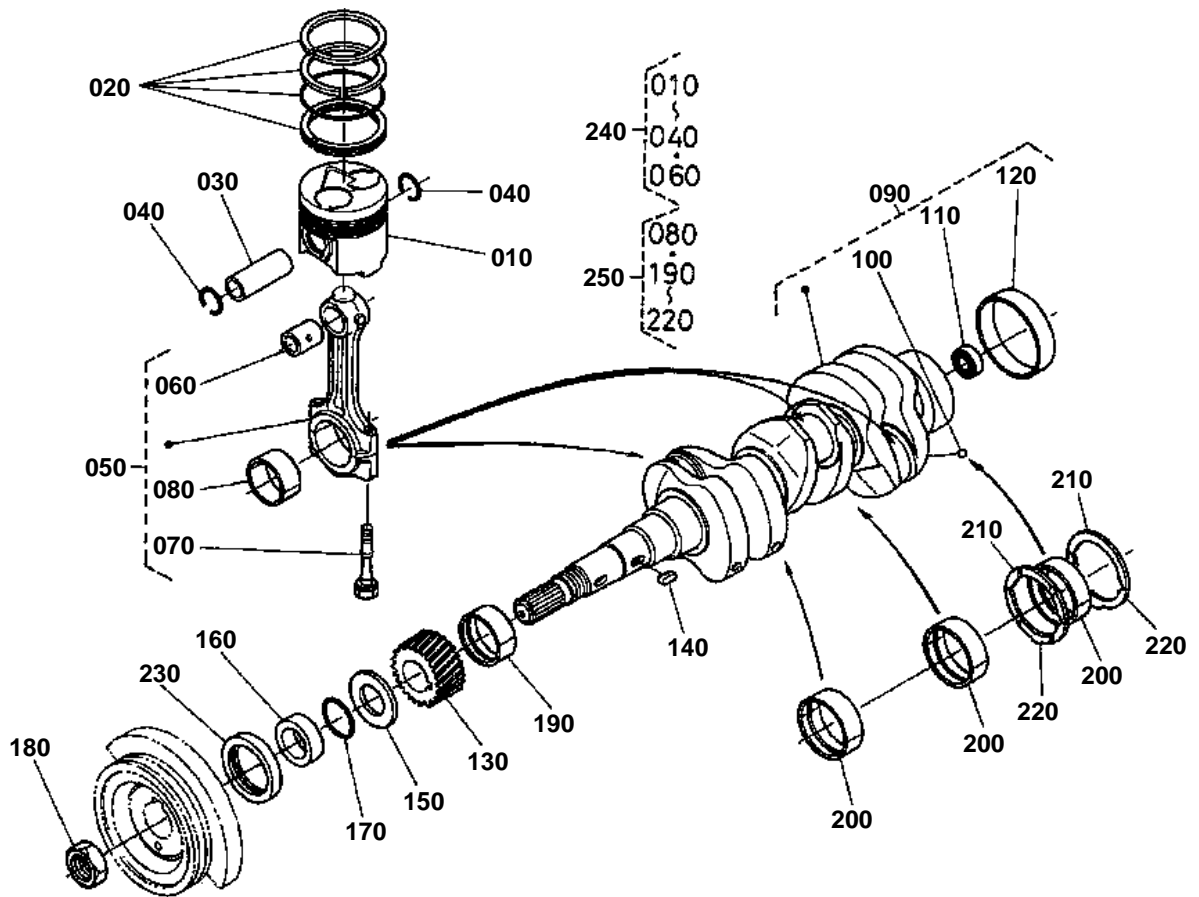


OIL PAN

↔ Interchangeable; ≠ not interchangeable; ← new for old; → old for new

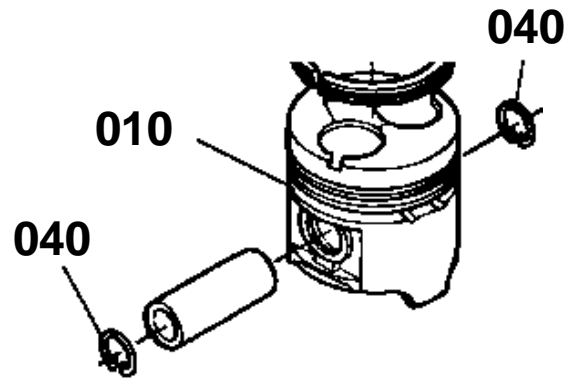
REF.No	Part No.	Description	Q'ty	S.No.	I/C	REMARKS	Weight (kgf)	Weight (lb)
010	15521-01610	OIL PAN	1				2.8	6.16
020	17326-01620	GASKET OIL PAN	1				0	0
020	1A021-01620	GASKET OIL PAN	1		«		0.014	0.0308
030	01133-51028	BOLT	18				0.027	0.0594
040	01133-51025	BOLT	2				0.023	0.0506
050	15261-33750	PLUG	2	<=YJ0586			0.034	0.0748
050	16427-33750	PLUG	2	>=YL0001	—		0.03	0.066
060	15109-33660	GASKET	2				0.001	0.0022
060	6C090-58960	GASKET	2		«		0.002	0.0044
070	16427-32110	FILTER OIL	1				0.2	0.44
080	01123-50814	BOLT	1				0	0
090	04811-00160	O RING	1				0	0
090	04816-00160	O RING	1		«		0.003	0.0066
100	16427-36410	GAUGE OIL	1				0.035	0.077
110	16414-33640	PLUG OIL GAUGE	1	>=2A0001			0	0

PISTON AND CRANKSHAFT



16477-001-12

OLD PARTS



1G726-805-10



PISTON AND CRANKSHAFT

NOTE:ORDER BY REF.No.010 and 040 NEW PART.

↔ Interchangeable; ≠ not interchangeable; ← new for old; → old for new

REF.No	Part No.	Description	Q'ty	S.No.	I/C	REMARKS	Weight (kgf)	Weight (lb)
010	19077-21110	PISTON	3	←=4N1454		STD NOT SALE SEE NOTE	0.58	1.276
010	19077-21112	PISTON	3	>=4Q0001	1	STD	0.58	1.276
010	19077-21910	PISTON	3	←=4N1454		+0.50mm SEE NOTE	0.585	1.287
010	19077-21912	PISTON	3	>=4Q0001	1	+0.50mm	0.585	1.287
020	17331-21050	ASSY PISTON RING	3			STD	0.065	0.143
020	17331-21090	ASSY PISTON RING	3			+0.50mm	0.065	0.143
030	14901-21310	PIN PISTON	3				0.17	0.374
040	14109-21330	CLIP PISTON PIN	6	←=4N1454			0.001	0.0022
040	1G279-21330	CIR CLIP INTERNAL	6	>=4Q0001	1		0.001	0.0022
050	17311-22010	ASSY CONNECTING ROD	3				0.885	1.947
060	17331-21980	BUSH PISTON PIN	3				0.025	0.055
070	15521-22142	BOLT CONNECTING ROD	6				0.026	0.0572
080	17311-22310	METAL CRANKPIN	3			STD	0.045	0.099
080	17331-22970	METAL CRANKPIN	3			-0.20mm	0	0
080	17331-22980	METAL CRANKPIN	3			-0.40mm	0.045	0.099
090	16467-23010	COMP.CRANKSHAFT	1	←=3Q0483			13	28.6
090	16467-23013	COMP.CRANKSHAFT	1	>=3S0001	1		13	28.6
100	07715-00401	BALL	3				0.001	0.0022
110	08121-06002	BEARING BALL	1				0.03	0.066
120	19202-23280	SLEEVE CRANKSHAFT	1				0.09	0.198
130	15471-24110	GEAR CRANKSHAFT	1				0.375	0.825
140	05712-00720	KEY FEATHER	1				0.008	0.0176
150	15471-23312	SLINGER OIL	1				0.008	0.0176
160	19202-23250	COLLAR CRANKSHAFT	1				0.065	0.143
170	04811-10300	O RING	1				0.001	0.0022
180	15221-23360	NUT CRANKSHAFT	1				0.11	0.242
190	17311-23470	METAL CRANKSHAFT	1	←=YA0300		STD	0	0
190	17311-23472	METAL CRANKSHAFT	1	>=YA0301	┘	STD	0.06	0.132
190	1A091-23470	METAL CRANKSHAFT	1	>=3S0001	1	STD	0.062	0.1364
190	17311-23910	METAL CRANKSHAFT	1	←=3Q0483		-0.20mm	0.05	0.11
190	1A091-23910	METAL CRANKSHAFT	1	>=3S0001	1	-0.20mm	0.065	0.143
190	17311-23920	METAL CRANKSHAFT	1	←=3Q0483		-0.40mm	0.06	0.132
190	1A091-23920	METAL CRANKSHAFT	1	>=3S0001	1	-0.40mm	0.065	0.143
200	17311-23480	METAL CRANKSHAFT	3	←=3Q0483		STD	0.045	0.099
200	1A091-23480	METAL CRANKSHAFT	3	>=3S0001	1	STD	0.05	0.11
200	17311-23930	METAL CRANKSHAFT	3	←=3Q0483		-0.20mm	0.05	0.11
200	1A091-23930	METAL CRANKSHAFT	3	>=3S0001	1	-0.20mm	0.06	0.132
200	17311-23940	METAL CRANKSHAFT	3	←=3Q0483		-0.40mm	0.06	0.132
200	1A091-23940	METAL CRANKSHAFT	3	>=3S0001	1	-0.40mm	0.065	0.143
210	15521-23530	METAL SIDE	2	←=3Q0483		STD	0.01	0.022
210	1A091-23530	METAL SIDE	2	>=3S0001	1	STD	0.009	0.0198
210	15521-23950	METAL SIDE	2	←=YE0248		+0.20mm	0	0
210	15521-23950	METAL SIDE	2	>=YE0249	┘	+0.20mm	0.01	0.022
210	1A091-23950	METAL SIDE	2	>=3S0001	1	+0.20mm	0.005	0.011
210	15521-23960	METAL SIDE	2	←=YE0248		+0.40mm	0	0
210	15521-23960	METAL SIDE	2	>=YE0249	┘	+0.40mm	0.01	0.022
210	1A091-23960	METAL SIDE	2	>=3S0001	1	+0.40mm	0.005	0.011
220	19202-23540	METAL SIDE	2	←=3Q0483		STD	0.01	0.022

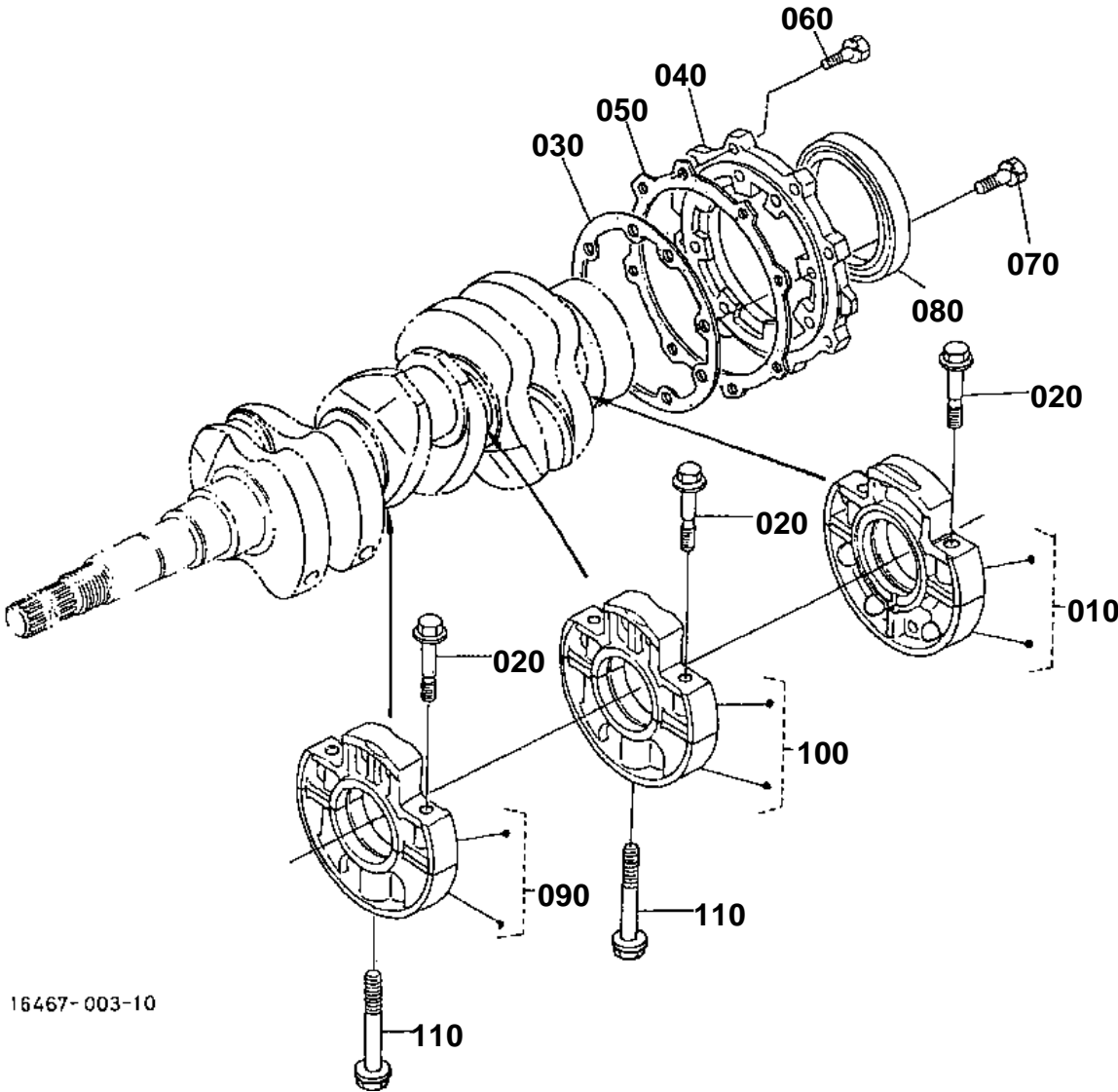
**PISTON AND CRANKSHAFT**

NOTE:ORDER BY REF.No.010 and 040 NEW PART.

↔ Interchangeable; ≠ not interchangeable; ← new for old; → old for new

REF.No	Part No.	Description	Q'ty	S.No.	I/C	REMARKS	Weight (kgf)	Weight (lb)
220	1A091-23540	METAL SIDE	2	>=3S0001	1	STD	0.009	0.0198
220	19202-23970	METAL SIDE	2	<=3Q0483		+0.20mm	0.01	0.022
220	1A091-23970	METAL SIDE	2	>=3S0001	1	+0.20mm	0.005	0.011
220	19202-23980	METAL SIDE	2	<=3Q0483		+0.40mm	0.01	0.022
220	1A091-23980	METAL SIDE	2	>=3S0001	1	+0.40mm	0.005	0.011
230	19202-04140	SEAL OIL	1				0.015	0.033
240	07916-26940	KIT PISTON-RING	3			STD	0.87	1.914
240	07916-26950	KIT PISTON-RING	3			+0.50mm	0.68	1.496
250	07916-28070	KIT METAL ENGINE	1			STD	0.35	0.77
250	07916-28720	KIT METAL ENGINE	1			-0.20mm	0	0
250	07916-28722	KIT METAL ENGINE	1		↔	-0.20mm	0.44	0.968
250	07916-28730	KIT METAL ENGINE	1			-0.40mm	0	0
250	07916-28732	KIT METAL ENGINE	1		↔	-0.40mm	0.44	0.968

MAIN BEARING CASE [OLD TYPE]



16467-003-10

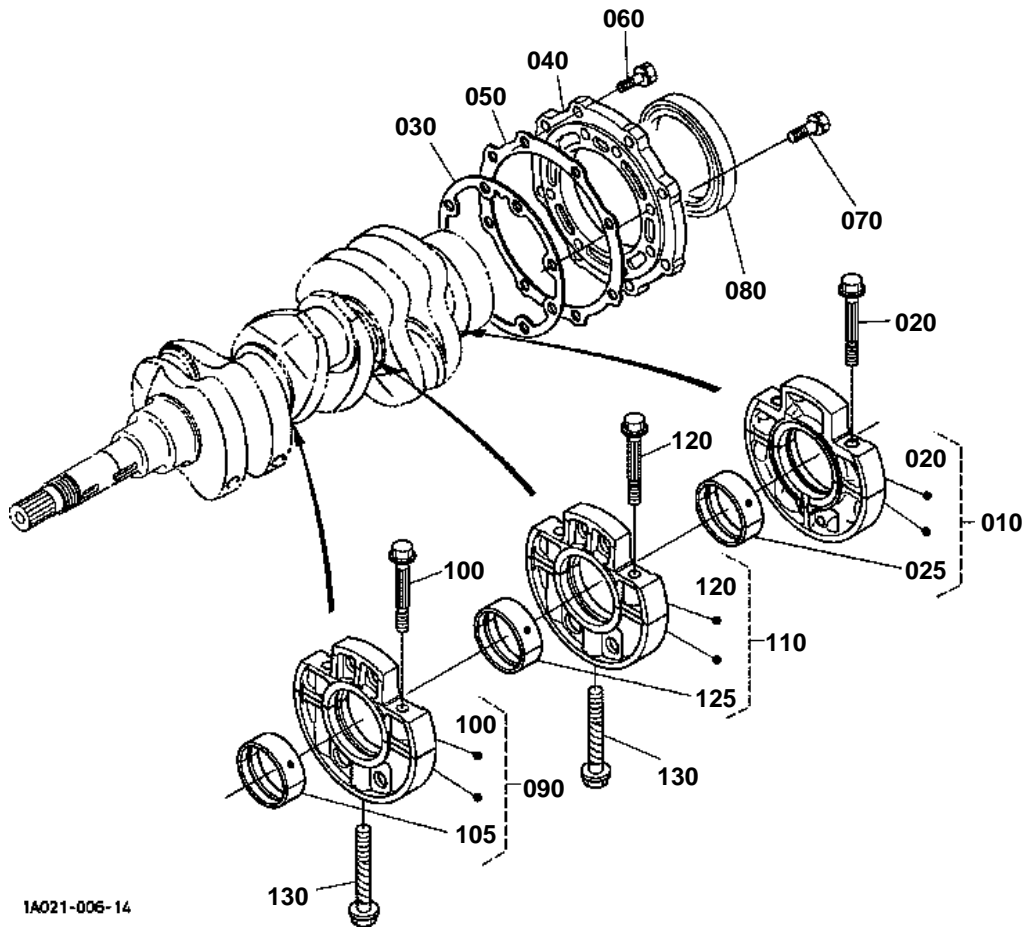
**MAIN BEARING CASE [OLD TYPE]**

S.No.;<=9369

↔ Interchangeable; ≠ not interchangeable; ← new for old; → old for new

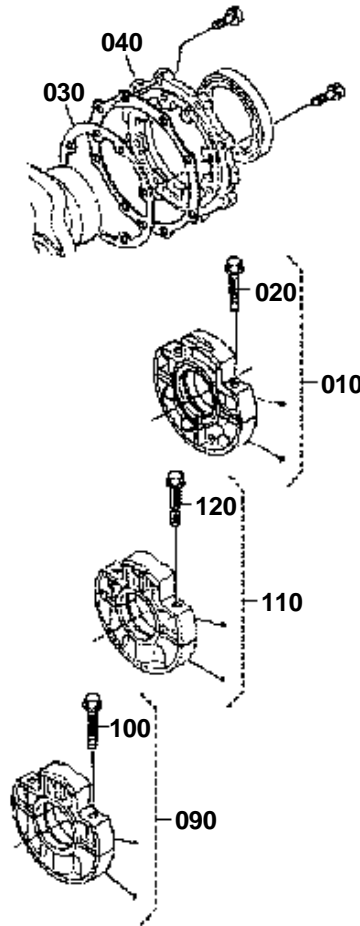
REF.No	Part No.	Description	Q'ty	S.No.	I/C	REMARKS	Weight (kgf)	Weight (lb)
010	19013-04090	ASSY BRG.CASE WHEEL	1				0	0
020	19013-04540	BOLT BEARING CASE	6				0.038	0.0836
030	17118-04360	GASKET BEARING CASE	1				0	0
030	19077-04360	GASKET BEARING CASE	1		«		0	0
040	19013-04813	COVER BEARING CASE	1				0	0
050	17118-04830	GASKET CASE COVER	1				0	0
060	01123-50828	BOLT	8				0.014	0.0308
070	01123-50828	BOLT	8				0.014	0.0308
080	19202-04460	SEAL OIL	1				0.055	0.121
090	19013-04040	ASSY BRG.CASE MAIN	1				0	0
100	19013-04050	ASSY BRG.CASE MAIN	1				0	0
110	15601-04560	BOLT BEARING CASE	2				0.06	0.132

MAIN BEARING CASE [NEW TYPE]



1A021-006-14

- 010 19013-0709-0
- 010 1A041-0709-2
- 020 19013-0454-0
- 030 19077-0436-0
- 040 19013-0481-3
- 090 19013-0704-0
- 090 1A091-0704-2
- 100 19013-0454-0
- 110 19013-0705-0
- 110 1A091-0705-2
- 120 19013-0454-0



1A013-804-10

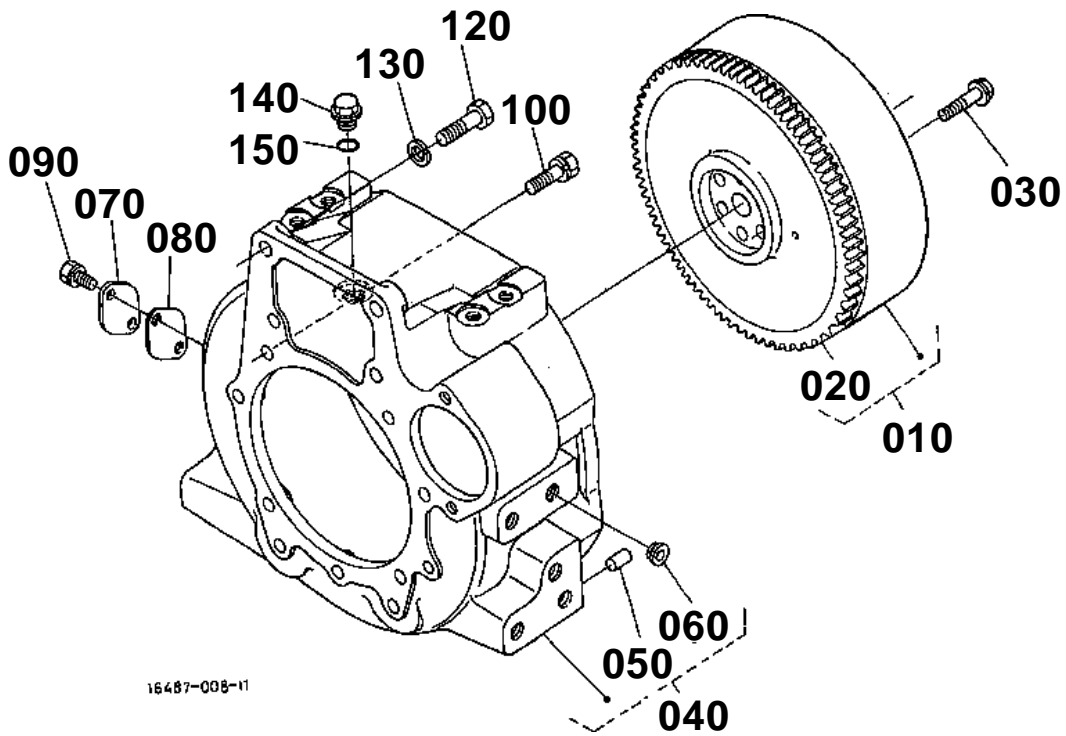
**MAIN BEARING CASE [NEW TYPE]**

S.No.;>=9370

↔ Interchangeable; ≠ not interchangeable; ← new for old; → old for new

REF.No	Part No.	Description	Q'ty	S.No.	I/C	REMARKS	Weight (kgf)	Weight (lb)
010	19013-07090	ASSY BRG.CASE WHEEL	1	<=3Q0483			1.55	3.41
010	1A041-07092	ASSY BRG.CASE WHEEL	1	>=3S0001	1		0	0
010	1A041-07093	ASSY BRG.CASE WHEEL	1	>=3U0001	→		1.34	2.948
020	19013-04540	BOLT BEARING CASE	2	<=3Q0483			0.038	0.0836
020	1A091-04540	BOLT BEARING CASE	2	>=3S0001	1		0.035	0.077
025	1A091-23480	METAL CRANKSHAFT	1	>=3U0001		STD SET	0.05	0.11
030	19077-04360	GASKET BRG.CASE	1	<=2Y0733			0	0
030	1A091-04362	GASKET BEARING CASE	1	>=3A0001	→		0.005	0.011
040	19013-04813	COVER BEARING CASE	1	<=3Q0483			0	0
040	1G851-04810	COVER BEARING CASE	1	>=3S0001	→		0.495	1.089
050	17118-04830	GASKET CASE COVER	1				0	0
050	1A091-04820	GASKET BRG.CASE COV.	1		«		0.006	0.0132
060	01123-50825	BOLT	8				0.013	0.0286
070	01123-50828	BOLT	8				0.014	0.0308
080	19202-04460	SEAL OIL	1				0.055	0.121
090	19013-07040	ASSY CASE MAIN BRG.	1	<=3Q0483			1.5	3.3
090	1A091-07042	ASSY BRG.CASE MAIN	1	>=3S0001	1		0	0
090	1A091-07043	ASSY BRG.CASE MAIN	1	>=3U0001	→		1.34	2.948
100	19013-04540	BOLT BEARING CASE	2	<=3Q0483			0.038	0.0836
100	1A091-04540	BOLT BEARING CASE	2	>=3S0001	1		0.035	0.077
105	1A091-23480	METAL CRANKSHAFT	1	>=3U0001		STD SET	0.05	0.11
110	19013-07050	ASSY CASE MAIN BRG.	1	<=3Q0483			1.495	3.289
110	1A091-07052	ASSY BRG.CASE MAIN	1	>=3S0001	1		0	0
110	1A091-07053	ASSY BRG.CASE MAIN	1	>=3U0001	→		1.34	2.948
120	19013-04540	BOLT BEARING CASE	2	<=3Q0483			0.038	0.0836
120	1A091-04540	BOLT BEARING CASE	2	>=3S0001	1		0.035	0.077
125	1A091-23480	METAL CRANKSHAFT	1	>=3U0001		STD SET	0.05	0.11
130	15601-04560	BOLT BEARING CASE	2				0.06	0.132

FLYWHEEL





Download the full PDF manual instantly.

Our customer service e-mail:

aservicemanualpdf@yahoo.com