

# Instructions for Parts Books

The heading at the top of the page will be the same for the picture of the parts as it is for the page with the part numbers.

Definition of column headings on part number pages:

**REF.No** → The number referring to the part on the picture page of the parts book.

**Part No.** → The number assigned to this part at the time of printing the parts book.

**Description** → Description of part.

**Q'ty** → Quantity of part used on that page.

**S.No.** → Serial number range of the equipment that this part will fit.

>= Your serial number should be greater than or equal to the number shown.

<= Your serial number should be lesser than or equal to the serial number shown.

**I/C** → Interchangeability of part shown.

↔ The part shown will work for the older and later serial number.

# The part shown is not interchangeable with the other serial number.

← new for old

→ old for new

**Remarks** → Notes about this particular part. Sometimes this may say except [FR] or [CA]

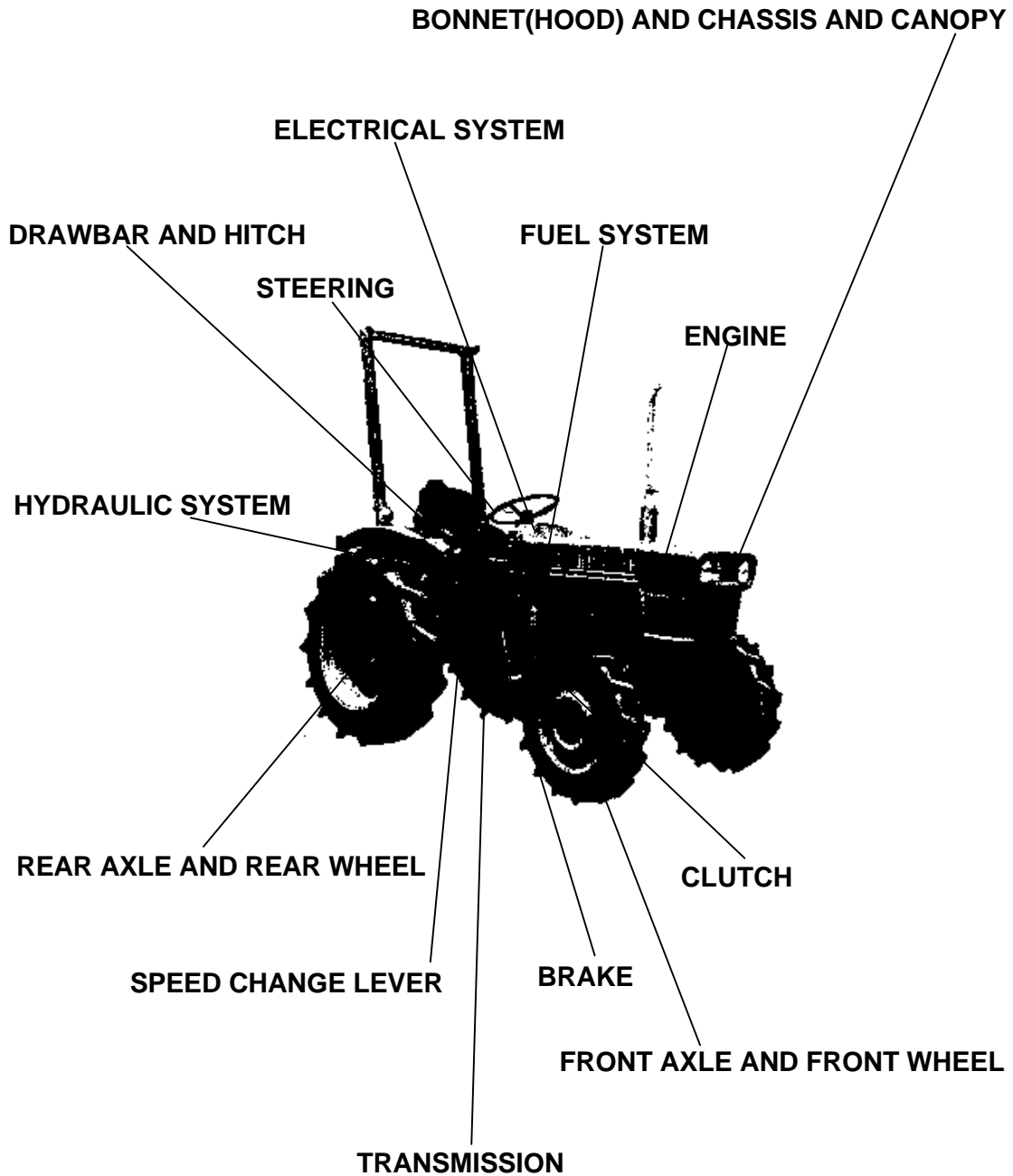
## Note about Country Codes:

The parts books we use in the United States of America may also contain information about a part that would be different in another country. It is important that you are aware of the country codes in some instances.

Symbol	Country
A	United States of America
CA	Canada
FR	France
GR	Greece
PO	Portugal
AU	Australia

If the remarks column says for example EXCEPT [FR] this part works in all countries except France. That means it will work here in the USA.

ALL PRODUCT INDEX  
L245DT

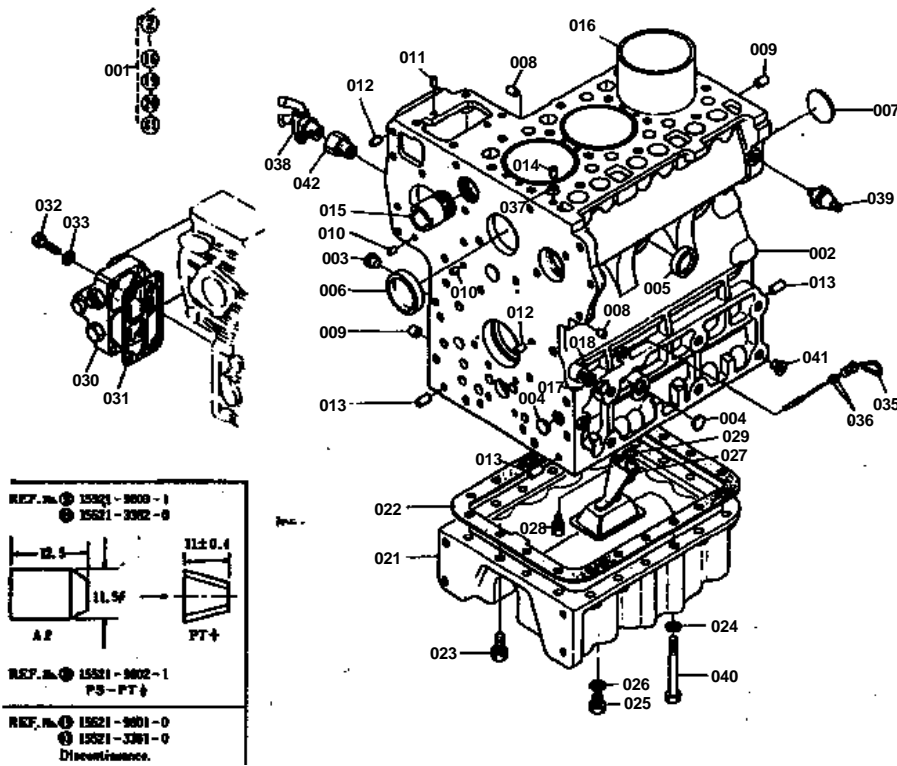


ACCESSORIES

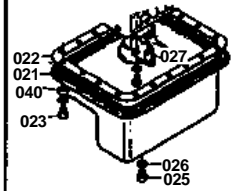
Item	Part No.	Description	Book
<b>ENGINE</b>	01001	CRANKCASE	100K0129
	01002	CYLINDER HEAD	100K0129
	01003	GEAR CASE	100K0129
	01004	BEARING CASE	100K0129
	01005	BREATHER	100K0129
	01006	AIR CLEANER	100K0129
	0100701	MUFFLER [L245DT]	100K0129
	0100702	MUFFLER [L245]	100K0129
	01008	VALVE,ROCKER ARM	100K0129
	01009	HEAD COVER	100K0129
	01010	CAMSHAFT	100K0129
	01011	PISTON CRANKSHAFT	100K0129
	01012	FLYWHEEL	100K0129
	01013	NOZZLE HOLDER	100K0129
	01014	FUEL CAMSHAFT	100K0129
	01015	SPEED CONTROL PLATE	100K0129
	01016	GOVERNOR	100K0129
	01017	DYNAMO	100K0129
	01018	RADIATOR	100K0129
	01019	WATER PUMP	100K0129
	01020	NAME PLATE	100K0129
	01063	OIL FILTER 2 [SECTION PARTS]	100K0129
	01064	STARTER	100K0129
	01065	NOZZLE HOLDER	100K0129
	01066	INJECTION PUMP	100K0129
	01067	DYNAMO	100K0129
<b>ELECTRICAL SYSTEM</b>	01024	BATTERY	100K0129
<b>CLUTCH</b>	01025	CLUTCH HOUSING	100K0129
	01026	CLUTCH	100K0129
	01027	CLUTCH PEDAL	100K0129
<b>STEERING</b>	01028	STEERING	100K0129
<b>SPEED CHANGE LEVER</b>	01029	HAND ACCEL	100K0129
<b>BONNET(HOOD) AND CHASSIS AND CANOPY</b>	01030	BONNET	100K0129
<b>ELECTRICAL SYSTEM</b>	01031	MIRROR LAMP	100K0129
<b>BONNET(HOOD) AND CHASSIS AND CANOPY</b>	01032	SEAT	100K0129
<b>TRANSMISSION</b>	01033	TRANSMISSION CASE	100K0129
	01034	GEAR DRIVE SYSTEM 1	100K0129
	01035	GEAR DRIVE SYSTEM 2	100K0129
	01036	GEAR DRIVE SYSTEM 3	100K0129
<b>SPEED CHANGE LEVER</b>	01037	SPEED CHANGE SYSTEM 1	100K0129
	01038	SPEED CHANGE SYSTEM 2	100K0129
	01039	CHANGE LAVER	100K0129
<b>REAR AXLE AND REAR WHEEL</b>	01040	DIFFERENTIAL SYSTEM 1	100K0129
	01041	DIFFERENTIAL SYSTEM 2	100K0129
	01042	REAR AXLE	100K0129
	01043	AXLE CASE	100K0129
<b>BRAKE</b>	01044	BRAKE	100K0129
	01045	BRAKE PEDAL	100K0129
<b>BONNET(HOOD) AND CHASSIS AND CANOPY</b>	0104602	FENDER [U.S.A]	100K0129
<b>ELECTRICAL SYSTEM</b>	01047	ELECTICAL 1	100K0129
	01048	ELECTICAL 2	100K0129
	01049	ELECTICAL 3	100K0129
<b>FUEL SYSTEM</b>	01050	FUEL TANK	100K0129
	01051	FUEL FILTER	100K0129
<b>HYDRAULIC SYSTEM</b>	01052	OIL PRESSURE 1	100K0129
	01053	OIL PRESSURE 2	100K0129
	01054	O/P CYLINDER	100K0129

Item	Part No.	Description	Book
HYDRAULIC SYSTEM FRONT AXLE AND FRONT WHEEL	01055	O/P LIFT ARM SYSTEM	100K0129
	01056	FRONT WHEEL [L245DT]	100K0129
	01057	FRONT WHEEL DRIVE [L245DT]	100K0129
	01058	DIFF GEAR CASE [L245DT]	100K0129
	01059	FRONT AXLE SUPPORT [L245DT]	100K0129
	01060	DRIVE CASE [L245DT]	100K0129
	01061	PROPELLER SHAFT [L245DT]	100K0129
	01062	FRONT AXLE BRACKET	100K0129
	01068	OIL PRESSURE PUMP	100K0129
	01069	CONTROL VALVE	100K0129
	01070	RELIEF VALVE	100K0129
HYDRAULIC SYSTEM	01072	DRAG LINK [INTEGRAL POWER STEERING] [L245DT]	100K0129
	01073	POWER STEERING [INTEGRAL POWER STEERING]	100K0129
	01074	FLOW PRIORITY VALVE [INTEGRAL POWER STEERING]	100K0129
	01075	FUEL TANK [INTEGRAL POWER STEERING]	100K0129
	01076	OIL PRESSURE [INTEGRAL POWER STEERING]	100K0129
	01077	STEERING JOINT [INTEGRAL POWER STEERING]	100K0129
	STEERING	01078	3-POINT LINKAGE [3P]
01079		ACCESSORIES AND SERVICE PARTS	100K0129
DRAWBAR AND HITCH ACCESSORIES			

# CRANKCASE



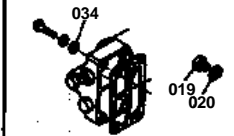
- REF. n. ① SPCC-FC25  
 ② IS341-0002-0  
 ③ Z54-061  
 ④ IS391-3211-0



- REF. n. ① IS341-0001-0



- REF. n. ① IS221-3375-0  
 ② IS109-3396-0  
 ③ 04012-50080



Discontinua.



# CRANKCASE

↔ Interchangeable; ≠ not interchangeable; ← new for old; → old for new

REF.No	Part No.	Description	Q'ty	S.No.	I/C	REMARKS	Weight (kgf)	Weight (lb)
001	15341-01010	ASSY CRANKCASE	1	<=14147			0	0
001	15341-01013	ASSY CRANKCASE	1	>=14148			55	121
002	99999-99999	BLANK	0			ORDER BY REF.No.001	0	0
003	34150-27580	PLUG	5	<=14147			0.001	0.0022
003	34150-27580	PLUG	1	>=14148			0.001	0.0022
004	06311-75015	PLUG,EXPANSION	3				0.002	0.0044
005	15221-03380	CAP,SEALING	5				0.017	0.0374
006	15221-03390	CAP,SEALING	2				0.03	0.066
007	06311-75045	PLUG,EXPANSION	1				0.026	0.0572
008	15221-33630	PLUG,PIN	5	<=14147			0.001	0.0022
008	15221-33630	PLUG,PIN	4	>=14148			0.001	0.0022
008	15521-96020	PLUG,PIN	5				0.003	0.0066
009	15221-33640	PLUG,PIN	1				0.003	0.0066
009	15521-96030	PLUG	2				0.007	0.0154
010	05012-00408	PIN,STRAIGHT	2				0.001	0.0022
011	05012-00609	PIN,STRAIGHT	2				0.003	0.0066
012	05012-00612	PIN,STRAIGHT	2				0.003	0.0066
013	05012-01018	PIN,STRAIGHT	3				0.012	0.0264
014	15221-33650	PIN,PIPE	1				0.004	0.0088
015	15221-72840	PIPE,WATER	1				0.078	0.1716
016	15221-02310	LINER,CYLINDER	3				0.58	1.276
017	15221-33610	PLUG	1				0.009	0.0198
018	15021-33660	GASKET	1				0.001	0.0022
019	15221-33750	PLUG	1	<=14147			0.032	0.0704
019	15521-33630	PLUG	1	>=14148			0.003	0.0066
019	15521-33620	PLUG	1				0.004	0.0088
019	15521-96010	PLUG	1				0.01	0.022
020	15109-33660	GASKET	1	<=14147			0.001	0.0022
021	15341-01610	OIL PAN	1				1.62	3.564
021	15301-01610	OIL PAN	1				11.4	25.08
022	15341-01620	GASKET,OIL PAN	1	<=6028			0	0
022	15301-01620	GASKET,OIL PAN	1				0	0
023	01173-51025	BOLT	20	>=5029			0.021	0.0462
023	01173-51035	BOLT	16				0.025	0.055
023	01133-51035	BOLT	16	>=1001			0.03	0.066
024	04512-50100	WASHER,SPRING	20				0	0
024	04512-50100	WASHER,SPRING	4	>=1001			0	0
025	15221-33750	PLUG	1				0.032	0.0704
025	15221-33750	PLUG	2				0.032	0.0704
026	15109-33660	GASKET	1	<=6028			0.001	0.0022
026	15109-33660	GASKET	2				0.001	0.0022
027	15291-32110	FILTER,OIL	1	>=6029			0.17	0.374
027	15301-32110	FILTER,OIL	1				0.23	0.506
028	01053-50816	BOLT	1				0.011	0.0242
028	01123-50816	BOLT	1	>=1001			0.011	0.0242
029	04811-00140	O RING	1				0.001	0.0022
030	15213-32020	ASSY FILTER,OIL 2	1				0.89	1.958
031	15213-32320	GASKET	1				0	0
032	01053-50842	BOLT	4				0.019	0.0418
032	01153-50842	BOLT	4	>=1001			0.018	0.0396
033	04512-50080	WASHER,SPRING	5				0.001	0.0022
033	04512-50080	WASHER,SPRING	4	>=1001			0.001	0.0022
034	04012-50080	WASHER,PLAIN	4	<=14147			0.001	0.0022
035	15342-36410	GAUGE,OIL	1				0.025	0.055
036	04811-00050	O RING	2				0.001	0.0022

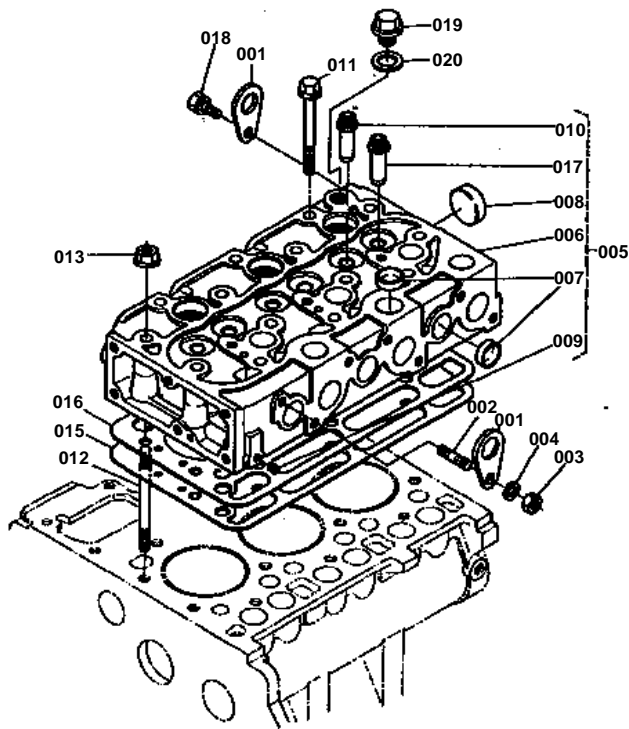


## CRANKCASE

↔ Interchangeable; ≠ not interchangeable; ← new for old; → old for new

REF.No	Part No.	Description	Q'ty	S.No.	I/C	REMARKS	Weight (kgf)	Weight (lb)
037	15221-33700	O RING	1				0.001	0.0022
038	14412-73110	ASSY COCK,DRAIN	1				0.09	0.198
039	15221-39010	SWITCH,OIL	1				0	0
040	15201-94010	WASHER,PLAIN	20	<=6028			0.007	0.0154
040	15411-91010	BOLT	4	>=6029			0	0
041	32210-27580	PLUG	8	>=14148			0.001	0.0022
042	15291-73160	JOINT,DRAIN COCK	1	>=14148			0.04	0.088
043	15521-33610	PLUG	1				0.002	0.0044

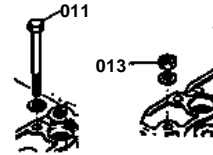
# CYLINDER HEAD



REF. No. ① 01513-50016  
 ② 02854-50011  
 ③ 04532-50019



REF. No. ① 15221-0345-0  
 ② 15221-0351-0



REF. No. ① 15221-0354-0



Discontinua.



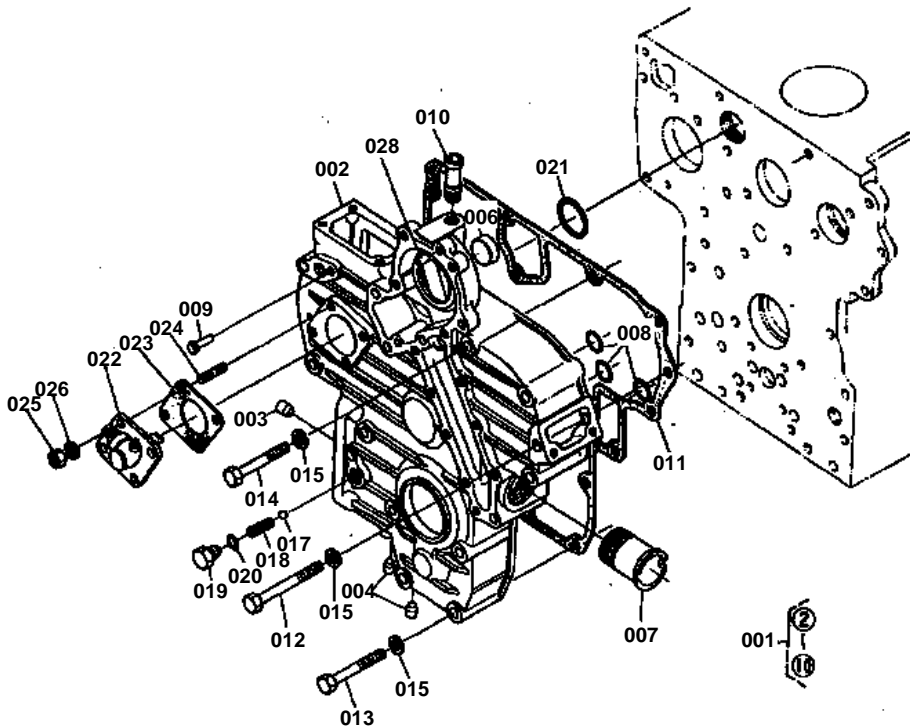


# CYLINDER HEAD

↔ Interchangeable; ≠ not interchangeable; ← new for old; → old for new

REF.No	Part No.	Description	Q'ty	S.No.	I/C	REMARKS	Weight (kgf)	Weight (lb)
001	15221-01750	HOOK,ENGINE	2				0.04	0.088
002	01513-50816	STUD	2				0.009	0.0198
002	15521-91490	STUD	1	>=1001			0	0
003	05411-00845	NUT	2				0.011	0.0242
003	02156-50080	NUT	1	>=1001			0.004	0.0088
004	04512-50080	WASHER,SPRING	2				0.001	0.0022
004	04512-50080	WASHER,SPRING	1	>=1001			0.001	0.0022
005	15321-03040	ASSY CYLINDER HEAD	1	<=2641			15.4	33.88
005	15321-03045	ASSY CYLINDER HEAD	1	>=2642			0	0
006	99999-99999	BLANK	0			ORDER BY REF.No.005	0	0
007	15221-03370	CAP,SEALING	9				0.01	0.022
008	15221-03490	CAP,SEALING	1				0.02	0.044
009	15131-01380	PLUG,PIN	2				0.001	0.0022
010	15221-13580	GUIDE,VALVE	6	<=2641			0	0
010	15221-13580	GUIDE,VALVE	3	>=2642			0	0
011	15221-03450	BOLT,CYLINDER HEAD	12	<=25384			0	0
011	19202-03450	BOLT,CYLINDER HEAD	12	>=25385			0.065	0.143
012	15221-03410	BOLT,CYLINDER HEAD	2	<=25384			0	0
012	19202-03410	BOLT,CYLINDER HEAD	2	>=25385			0.065	0.143
013	15221-03510	NUT,CYLINDER HEAD	2	<=25384			0.008	0.0176
013	19202-03510	NUT,CYLINDER HEAD	2	>=25385			0.012	0.0264
014	15221-03540	WASHER,PLAIN	14				0.003	0.0066
015	15321-03310	GASKET,CYLINDER HEAD	1				0	0
016	15321-03320	SHIM,CYL.HEAD GASKET	1				0.047	0.1034
017	15601-13560	GUIDE,EXHAUST VALVE	3	>=2642			0	0
018	01123-50816	BOLT	1	>=14148			0.011	0.0242
019	15000-36080	PLUG	1	>=14148			0.03	0.066
020	04717-01600	WASHER,SEAL	1	>=14148			0.003	0.0066

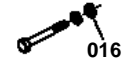
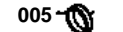
GEAR CASE



N.E.P. No. 15221-0402-0  
Q.P.15221-0413-0



N.E.P. No. 15221-0149-0  
Q.P.01012-50080  
Q.P.01012-50090



Discontinuo.

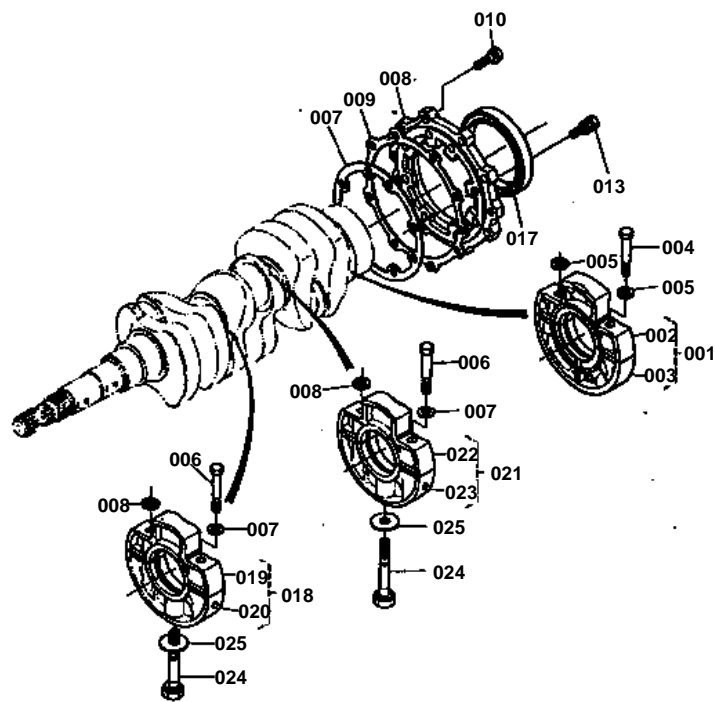


# GEAR CASE

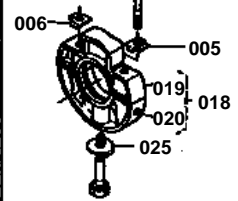
↔ Interchangeable; ≠ not interchangeable; ← new for old; → old for new

REF.No	Part No.	Description	Q'ty	S.No.	I/C	REMARKS	Weight (kgf)	Weight (lb)
001	15321-04020	ASSY CASE,GEAR	1	<=14147			4.8	10.56
001	15341-04020	ASSY CASE,GEAR	1	>=14148			4.25	9.35
002	99999-99999	BLANK	0			ORDER BY REF.No.001	0	0
003	15221-33620	PLUG,PIN	2				0.002	0.0044
004	15221-33640	PLUG,PIN	1	<=14147			0.003	0.0066
004	15221-33660	PLUG,PIN	2	>=14148			0.004	0.0088
005	15221-03490	CAP,SEALING	1	<=14147			0.02	0.044
006	15321-96260	CAP,SEALING	1				0.014	0.0308
007	15221-72880	PIPE,WATER	1				0.115	0.253
008	04811-00150	O RING	3				0.001	0.0022
009	15221-56280	PIN,START SPRING	1				0.006	0.0132
010	15321-73340	PIPE,WATER RETURN	1				0.016	0.0352
011	15221-04130	GASKET,GEAR CASE	1	<=14147			0	0
011	15601-04130	GASKET,GEAR CASE	1	>=14148			0	0
012	01053-50885	BOLT	1	<=14147			0.031	0.0682
012	01153-50885	BOLT	4	>=14148			0.031	0.0682
013	15221-91040	BOLT	10	<=14147			0	0
013	15521-91010	BOLT	10	>=14148			0	0
014	15321-91010	BOLT	3	<=14147			0.03	0.066
014	01153-50870	BOLT	7	>=14148			0.026	0.0572
015	04512-50080	WASHER,SPRING	14	<=14147			0.001	0.0022
015	04512-50080	WASHER,SPRING	15	>=14148			0.001	0.0022
016	04012-50080	WASHER,PLAIN	14	<=14147			0.001	0.0022
017	07715-00803	BALL	1				0.004	0.0088
018	15221-38440	SPRING	1				0.004	0.0088
019	15221-38420	CAP	1				0.025	0.055
020	04811-00100	O RING	1				0.001	0.0022
021	04811-40240	O RING	1				0.002	0.0044
022	37150-34660	ASSY UNIT,HOUR METER	1				0.32	0.704
023	15221-88130	GASKET	1				0	0
024	15221-88210	STUD	4				0.005	0.011
025	02056-50060	NUT	4				0.002	0.0044
026	04512-50060	WASHER,SPRING	4				0	0
027	04012-50060	WASHER,PLAIN	4	<=14147			0.001	0.0022
028	05012-00612	PIN,STRAIGHT	2	>=14148			0.003	0.0066

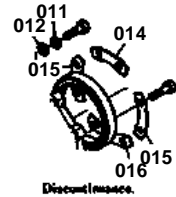
# BEARING CASE



- REF. # ① 15221-0401-0  
 ② 15221-0457-0  
 ③ 15221-0460-0  
 ④ 15271-0485-0  
 ⑤ 15291-0459-0



- REF. # ① 04512-50080  
 ② 04012-50080  
 ③ 15221-0464-0  
 ④ 15221-0485-0  
 ⑤ 15221-0468-0



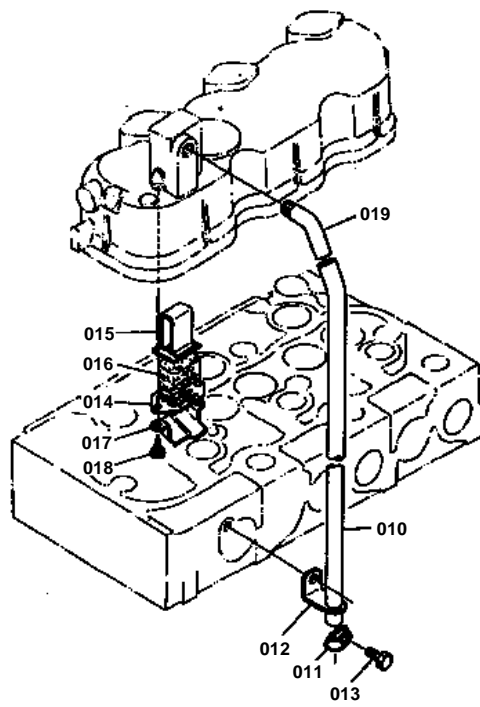
Discontinance.

**BEARING CASE**

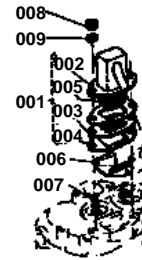
↔ Interchangeable; ≠ not interchangeable; ← new for old; → old for new

REF.No	Part No.	Description	Q'ty	S.No.	I/C	REMARKS	Weight (kgf)	Weight (lb)
001	15221-04040	ASSY CASE,BEARING	1				0	0
001	15521-04040	ASSY CASE,BEARING	1	≥1001			0	0
002	99999-99999	BLANK	0			ORDER BY REF.No.001	0	0
003	99999-99999	BLANK	0			ORDER BY REF.No.001	0	0
004	15221-04540	BOLT 1	6				0	0
004	15521-04540	BOLT 1	6	≥1001			0	0
005	15221-04570	WASHER,LOCK 1	3				0.002	0.0044
005	15521-94010	WASHER,LOCK 1	3	≥1001			0.001	0.0022
006	15221-04580	WASHER,LOCK 2	3	≤14147			0.003	0.0066
007	15221-04360	GASKET	1				0	0
008	15221-04810	COVER,BEARING	1				0.3	0.66
009	15221-04820	GASKET,COVER	1				0	0
010	01053-50825	BOLT	8				0.014	0.0308
010	01123-50825	BOLT	8	≥1001			0.013	0.0286
011	04512-50080	WASHER,SPRING	8	≤14147			0.001	0.0022
012	04012-50080	WASHER,PLAIN	8	≤14147			0.001	0.0022
013	01053-50828	BOLT	8				0.014	0.0308
013	01123-50828	BOLT	8	≥1001			0.014	0.0308
014	15221-04640	WASHER,COVER 1	1	≤14147			0.005	0.011
015	15221-04650	WASHER,COVER 2	2	≤14147			0.005	0.011
016	15221-04660	WASHER,COVER 3	1	≤14147			0.006	0.0132
017	15221-04460	SEAL,OIL	1				0.06	0.132
018	15221-04050	ASSY CASE,BEARING 1	1				0	0
018	15521-04050	ASSY CASE,BEARING 1	1	≥1001			0	0
019	99999-99999	BLANK	0			ORDER BY REF.No.018	0	0
020	99999-99999	BLANK	0			ORDER BY REF.No.018	0	0
021	15321-04060	ASSY CASE,BEARING 2	1				0	0
021	15521-04060	ASSY CASE,BEARING 2	1	≥1001			0	0
022	99999-99999	BLANK	0			ORDER BY REF.No.021	0	0
023	99999-99999	BLANK	0			ORDER BY REF.No.021	0	0
024	15291-04560	BOLT 2	2				0.06	0.132
025	15291-04590	WASHER,LOCK 3	2				0.005	0.011
025	15521-94020	WASHER,LOCK 3	2	≥1001			0.004	0.0088

# BREATHER



- REF. No. 15341-0541-0  
 15341-0511-0  
 15341-0514-0  
 15341-0543-0  
 15341-0557-0  
 15341-0537-0  
 15341-0521-0  
 15341-5000  
 04521-5000



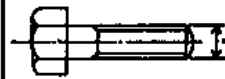
Dimension

- REF. No. 15341-0550-0



∅ : 11-12mm

- REF. No. 01173-01210



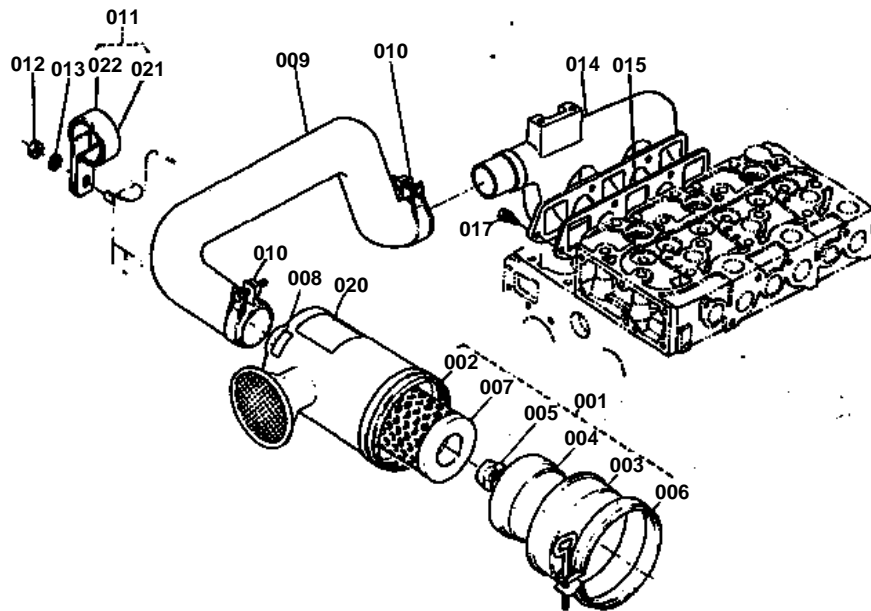
∅ : 10-12mm

**BREATHER**

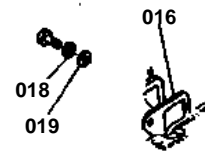
↔ Interchangeable; ≠ not interchangeable; ← new for old; → old for new

REF.No	Part No.	Description	Q'ty	S.No.	I/C	REMARKS	Weight (kgf)	Weight (lb)
001	15241-05010	ASSY BREATHER	1	≤14147			0.15	0.33
002	99999-99999	BLANK	1			ORDER BY REF.No.001	0	0
003	15241-05140	PLATE,ELEMENT	1	≤14147			0.009	0.0198
004	15321-05430	GASKET,COVER	2	≤14147			0	0
005	15241-05670	ELEMENT,BREATHER	1	≤14147			0.008	0.0176
006	15241-05370	OIL SHIELD,BREATHER	1	≤14147			0.005	0.011
007	15221-88210	STUD	2	≤14147			0.005	0.011
008	02056-50060	NUT	2	≤14147			0.002	0.0044
009	04512-50060	WASHER,SPRING	2	≤14147			0	0
010	15321-05510	PIPE,BREATHER	1				0.039	0.0858
011	15401-05590	CLAMP,PIPE	1	≤14147			0.003	0.0066
011	15341-05590	CLAMP,PIPE	1	≥1001			0.003	0.0066
012	15401-05580	CLAMP,PIPE	1				0.02	0.044
013	01173-51018	BOLT	1	≤14147			0.018	0.0396
013	01173-51218	BOLT	1	≥14148			0.028	0.0616
014	15521-05140	ELEMENT,BREATHER 1	1	≥14148			0.005	0.011
015	15521-05150	ELEMENT,BREATHER	1	≥14148			0.01	0.022
016	15521-05670	ELEMENT,BREATHER	1	≥14148			0.01	0.022
017	15521-05370	OIL SHIELD,BREATHER	1	≥14148			0.005	0.011
018	03024-50510	SCREW	2	≥14148			0.002	0.0044
019	15521-05550	JOINT,BREATHER	1	≥14148			0.04	0.088

# AIR CLEANER

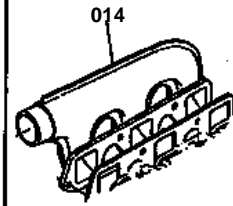


REF. N. ① 15321-1183-0  
② 04612-52002  
③ 04011-30200



Discontinua.

REF. N. ① 15321-1176-0



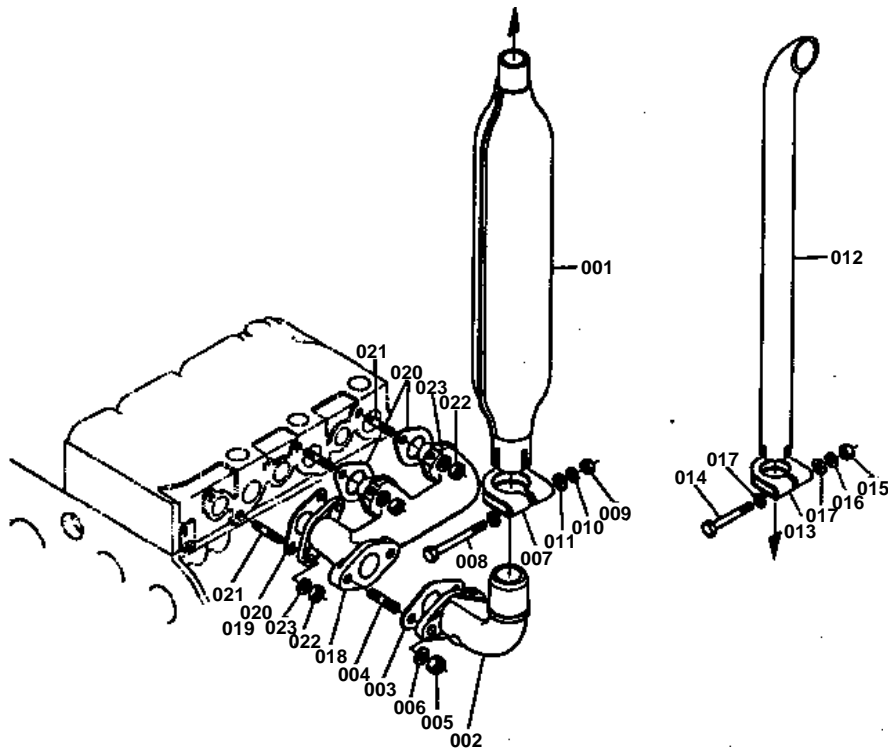


**AIR CLEANER**

↔ Interchangeable; ≠ not interchangeable; ← new for old; → old for new

REF.No	Part No.	Description	Q'ty	S.No.	I/C	REMARKS	Weight (kgf)	Weight (lb)
001	15222-11012	ASSY CLEANER,AIR	1				1.4	3.08
002	15222-11150	BODY,AIR CLEANER	1				0.708	1.5576
003	15222-11160	COVER,AIR CLEANER	1				0.202	0.4444
004	15222-11410	COVER,BAFFLE	1				0.043	0.0946
005	15222-92620	NUT,WING	1				0.02	0.044
006	15222-11070	ASSY BAND,AIR CLEANER	1				0.098	0.2156
007	15222-11220	ELEMENT,AIR CLEANER	1				0.344	0.7568
008	15222-87750	MARK,FORM	1				0.001	0.0022
009	15321-11620	PIPE,INLET	1				0.737	1.6214
010	15221-11720	BAND,PIPE	2				0.03	0.066
011	15321-11700	ASSY HOLDER,INLET PI	1				0.07	0.154
012	02056-50080	NUT	1				0.005	0.011
012	02156-50080	NUT	1	>=1001			0.004	0.0088
013	04512-50080	WASHER,SPRING	1				0.001	0.0022
014	15321-11760	MANIFOLD,INLET	1				0.86	1.892
014	15501-11760	MANIFOLD,INLET	1	>=1001			0.75	1.65
015	15221-11820	GASKET,IN-MANIFOLD	1				0.008	0.0176
015	15521-11820	GASKET,IN-MANIFOLD	1	>=1001			0	0
016	15321-11830	GASKET,IN-MANIFOLD	1	<=14147			0	0
017	01053-50822	BOLT	5				0.013	0.0286
017	01123-50822	BOLT	5	>=1001			0.012	0.0264
018	04512-50080	WASHER,SPRING	5	<=14147			0.001	0.0022
019	04012-50080	WASHER,PLAIN	5	<=14147			0.001	0.0022
020	15222-93450	LABEL,AIR CLEANER	1				0.001	0.0022
021	15321-11690	PROTECTOR,INLET PIPE	1				0.02	0.044
022	15321-11710	HOLDER,INLET PIPE	1				0.055	0.121

MUFFLER [L245DT]



**MUFFLER [L245DT]**

↔ Interchangeable; ≠ not interchangeable; ← new for old; → old for new

REF.No	Part No.	Description	Q'ty	S.No.	I/C	REMARKS	Weight (kgf)	Weight (lb)
001	15221-12110	MUFFLER	1				0	0
002	15221-12320	FLANGE,MUFFLER	1				0	0
003	15221-12370	GASKET,M-FLANGE	1				0	0
004	01517-51025	STUD	2				0	0
005	15021-12260	NUT	2				0.013	0.0286
006	04512-50100	WASHER,SPRING	2				0	0
007	15221-12130	BAND,MUFFLER	1				0	0
008	01153-50878	BOLT	1				0.029	0.0638
009	02156-50080	NUT	1				0.004	0.0088
010	04512-50080	WASHER,SPRING	1				0.001	0.0022
011	04012-50080	WASHER,PLAIN	2				0.001	0.0022
012	34219-12410	PIPE,EXHAUST	1				0.54	1.188
013	15221-12430	BAND,PIPE	1				0	0
014	01153-50860	BOLT	1				0.024	0.0528
015	02156-50080	NUT	1				0.004	0.0088
016	04512-50080	WASHER,SPRING	1				0.001	0.0022
017	04012-50080	WASHER,PLAIN	2				0.001	0.0022
018	15321-12310	MANIFOLD,EXHAUST	1				1.46	3.212
019	15221-12360	GASKET,EX-MANIFOLD	1	<=14147			0	0
020	15221-12350	GASKET,EX-MANIFOLD	2				0	0
020	15521-12350	GASKET,EX-MANIFOLD	3	>=1001			0	0
021	15221-91530	STUD	6				0.011	0.0242
022	02056-50080	NUT	6				0.005	0.011
022	02156-50080	NUT	6	>=1001			0.004	0.0088
023	04512-50080	WASHER,SPRING	6				0.001	0.0022



**Download the full PDF manual instantly.**

**Our customer service e-mail:**

**[aservicemanualpdf@yahoo.com](mailto:aservicemanualpdf@yahoo.com)**