

Instructions for Parts Books

The heading at the top of the page will be the same for the picture of the parts as it is for the page with the part numbers.

Definition of column headings on part number pages:

REF.No → The number referring to the part on the picture page of the parts book.

Part No. → The number assigned to this part at the time of printing the parts book.

Description → Description of part.

Q'ty → Quantity of part used on that page.

S.No. → Serial number range of the equipment that this part will fit.

>= Your serial number should be greater than or equal to the number shown.

<= Your serial number should be lesser than or equal to the serial number shown.

I/C → Interchangeability of part shown.

↔ The part shown will work for the older and later serial number.

The part shown is not interchangeable with the other serial number.

← new for old

→ old for new

Remarks → Notes about this particular part. Sometimes this may say except [FR] or [CA]

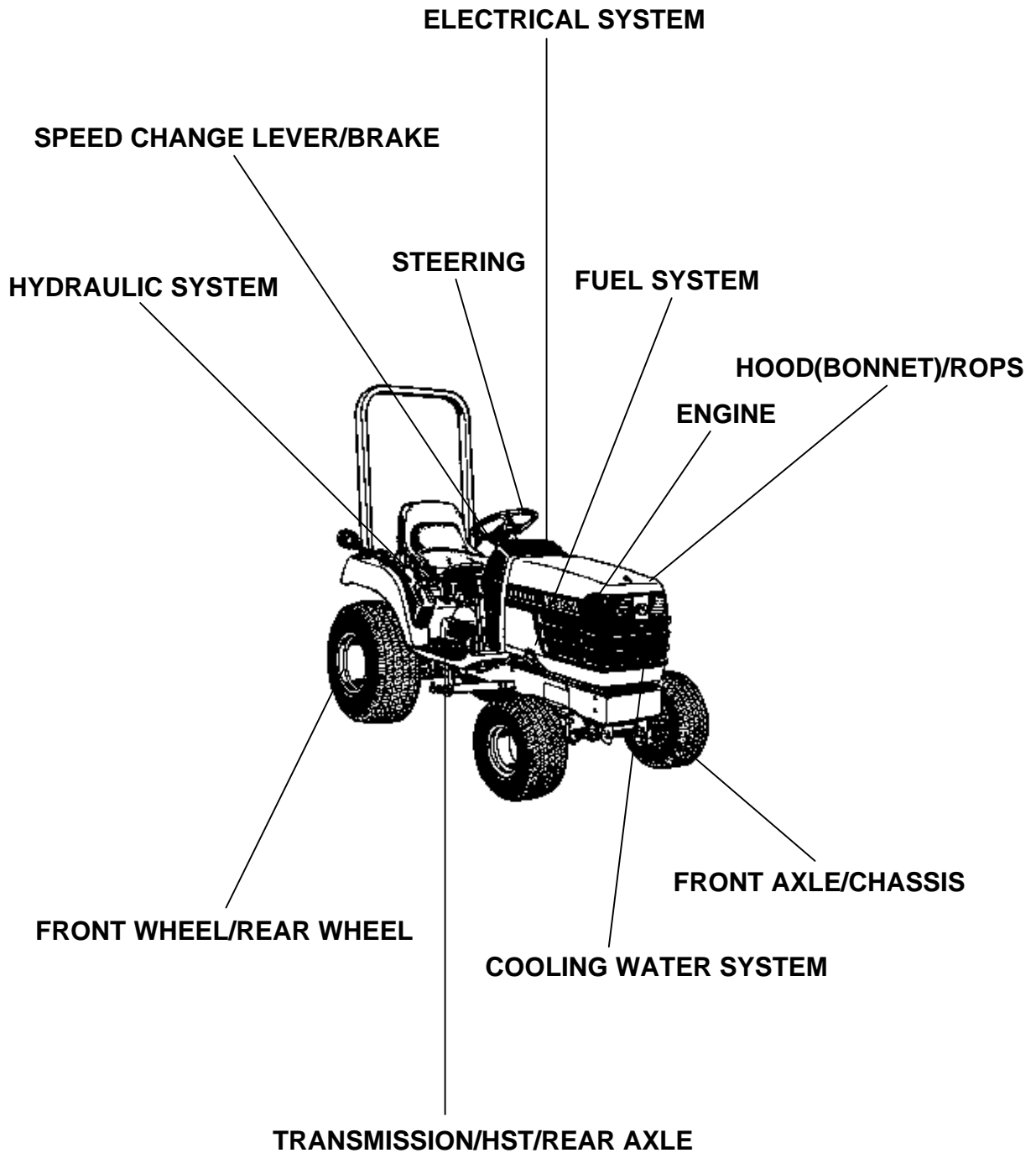
Note about Country Codes:

The parts books we use in the United States of America may also contain information about a part that would be different in another country. It is important that you are aware of the country codes in some instances.

Symbol	Country
A	United States of America
CA	Canada
FR	France
GR	Greece
PO	Portugal
AU	Australia

If the remarks column says for example EXCEPT [FR] this part works in all countries except France. That means it will work here in the USA.

ALL PRODUCT INDEX
BX2200D



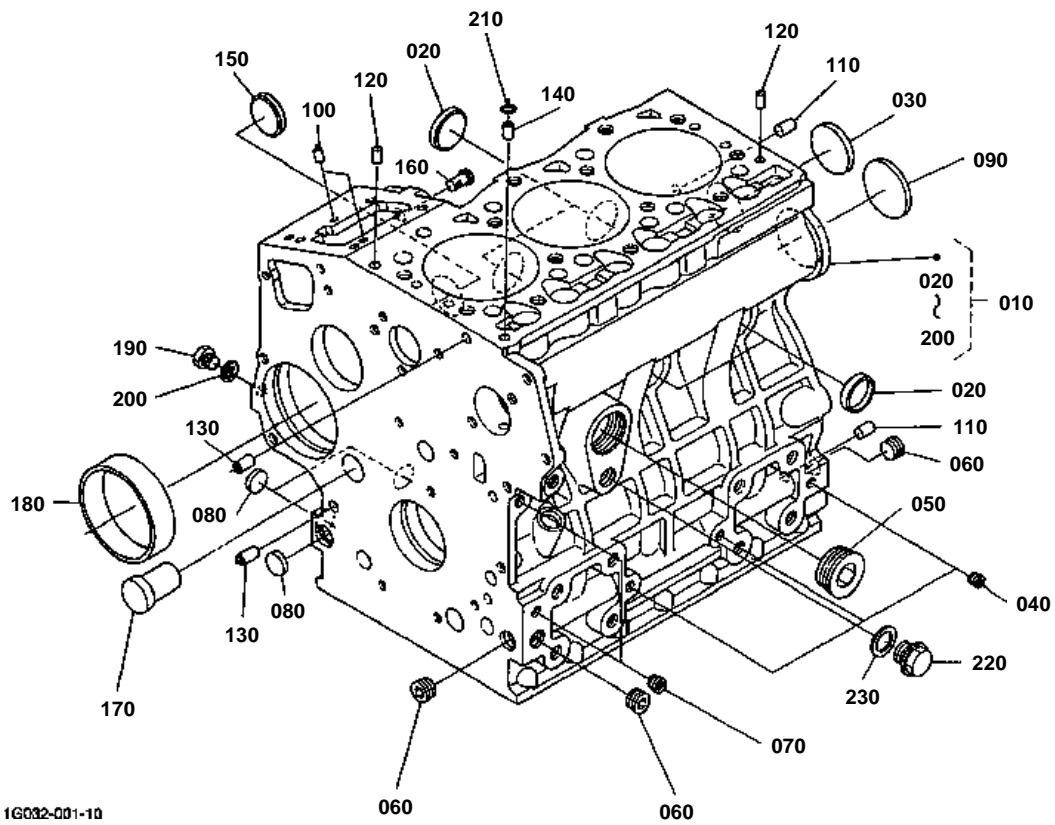
LABELS
ACCESSORIES
OPTION

Item	Part No.	Description	Book	
ENGINE	021001	CRANKCASE	100K0552	
	021002	OIL PAN	100K0552	
	021003	CYLINDER HEAD	100K0552	
	021004	GEAR CASE	100K0552	
	021005	HEAD COVER	100K0552	
	021006	OIL FILTER	100K0552	
	021007	DIPSTICK AND GUIDE	100K0552	
	021100	MAIN BEARING CASE	100K0552	
	021101	CAMSHAFT AND IDLE GEAR SHAFT	100K0552	
	021102	PISTON AND CRANKSHAFT	100K0552	
	021103	FLYWHEEL	100K0552	
	021105	FUEL CAMSHAFT AND GOVERNOR SHAFT	100K0552	
	021200	ENGINE STOP LEVER	100K0552	
	021201	STOP SOLENOID	100K0552	
	021202	INJECTION PUMP	100K0552	
	021203	INJECTION PUMP [COMPONENT PARTS]	100K0552	
	021204	GOVERNOR [OLD TYPE]	100K0552	
	02120401	GOVERNOR [NEW TYPE]	100K0552	
	021205	SPEED CONTROL PLATE	100K0552	
	021206	NOZZLE HOLDER AND GLOW PLUG	100K0552	
	021207	NOZZLE HOLDER [COMPONENT PARTS]	100K0552	
	021301	FUEL PUMP(MECHANICAL)	100K0552	
	021400	DYNAMO AND PULLEY	100K0552	
	021401	DYNAMO [COMPONENT PARTS]	100K0552	
	021404	STARTER	100K0552	
	021405	STARTER [COMPONENT PARTS]	100K0552	
	021406	OIL SWITCH/THERMOMETER AND PLUG	100K0552	
	021500	WATER FLANGE AND THERMOSTAT	100K0552	
	021501	WATER PUMP	100K0552	
	021504	FAN	100K0552	
	021600	VALVE AND ROCKER ARM	100K0552	
	021601	INLET MANIFOLD	100K0552	
	021602	EXHAUST MANIFOLD	100K0552	
	021703	HYDRAULIC PUMP COVER	100K0552	
	021900	UPPER GASKET KIT	100K0552	
	021901	LOWER GASKET KIT	100K0552	
	011603	AIR CLEANER	100K0552	
	011605	MUFFLER	100K0552	
	01A00102	ACCELERATOR LEVER	100K0552	
	FUEL SYSTEM	01A101	FUEL TANK	100K0552
		01A11002	FUEL PIPE	100K0552
	COOLING WATER SYSTEM	01A41002	WATER PIPE	100K0552
		01A42002	RADIATOR	100K0552
	ELECTRICAL SYSTEM	01A53502	BATTERY	100K0552
		01B115	PANEL BOARD	100K0552
		01B215	SWITCH/SENSOR	100K0552
		01B301	HEAD RIGHT	100K0552
	01B303	HAZARD LIGHT/TAIL LIGHT	100K0552	
	01B501	ELECTRICAL WIRING	100K0552	
TRANSMISSION/HST/REAR AXLE	01C420	TRANSMISSION CASE	100K0552	
	01C427	REAR AXLE CASE	100K0552	
	01D001	CLUTCH SHAFT/OUTPUT SHAFT	100K0552	
	01D005	PROPELLER SHAFT	100K0552	
	01D010	HST	100K0552	
	01D015	HST [COMPONENT PARTS]	100K0552	
	01D107	RANGE GEAR SHAFT	100K0552	
	01D135	PTO SHAFT	100K0552	
	01D137	MID PTO	100K0552	
	01D140	REAR DIFFERENTIAL	100K0552	
	01D141	FWD IDLE SHAFT	100K0552	

Item	Part No.	Description	Book
TRANSMISSION/HST/REAR AXLE	01D142	GP IDLE SHAFT	100K0552
	01D143	FRONT WHEEL PROPELLER SHAFT	100K0552
	01D215	RANGE GEAR SHIFT FORK/CREEP GEAR SHIFT	100K0552
	01D220	PTO GEAR SHIFT FORK	100K0552
	01D222	PTO GEAR SHIFT ARM	100K0552
	01D225	DIFFERENTIAL LOCK SHIFT FORK	100K0552
	01D301	REAR AXLE	100K0552
SPEED CHANGE LEVER/BRAKE	01E001	BRAKE	100K0552
	01F107	NEUTRAL HOLDER LINK	100K0552
	01F108	SPEED CONTROL PEDAL	100K0552
	01F110	RANGE GEAR SHIFT LEVER	100K0552
	01F113	FRONT WHEEL DRIVE LEVER	100K0552
	01F122	PTO SELECT LEVER	100K0552
	01F125	PTO GEAR SHIFT LEVER	100K0552
	01F143	HYDRAULIC CONTROL LEVER	100K0552
	01F201	BRAKE PEDAL	100K0552
	01F205	DIFFERENTIAL LOCK PEDAL	100K0552
FRONT AXLE/CHASSIS	01G10102	FRONT AXLE FRAME	100K0552
	01G110	FRONT DIFFERENTIAL CASE	100K0552
	01G115	FRONT DIFFERENTIAL	100K0552
	01G120	DIFFERENTIAL GEAR SHAFT	100K0552
	01G125	FRONT AXLE CASE	100K0552
	01G130	FRONT AXLE	100K0552
STEERING	01H101	STEERING HANDLE	100K0552
	01H110	STEERING CONTROLLER	100K0552
	01H120	STEERING LINKAGE	100K0552
HYDRAULIC SYSTEM	01H122	STEERING CYLINDER [COMPONENT PARTS]	100K0552
	01J120	HYDRAULIC PUMP	100K0552
	01J125	HYDRAULIC PUMP [COMPONENT PARTS]	100K0552
	01J201	HYDRAULIC OIL LINE(SUCTION)	100K0552
	01J210	HYDRAULIC OIL LINE(DELIVERY)	100K0552
	01J215	HYDRAULIC OIL LINE(STEERING)	100K0552
	01J301	HYDRAULIC CYLINDER	100K0552
	01J310	HYDRAULIC PISTON/LIFT ARM	100K0552
	01J405	CONTROL VALVE	100K0552
	01J410	CONTROL VALVE [COMPONENT PARTS]	100K0552
	01K114	TOP LINK	100K0552
	01K115	LOWER LINK	100K0552
	01K116	LIFT ROD	100K0552
	01K123	TOP LINK BRACKET/FENDER BRACKET	100K0552
HOOD(BONNET)/ROPS	01K130	MOWER REAR LINK RH	100K0552
	01K131	MOWER REAR LINK LH	100K0552
	01L125	PTO PROTECTOR	100K0552
	01M102	FRONT GLILLE SUPPORT	100K0552
	01M105	BONNET	100K0552
	01M110	BONNET SIDE	100K0552
	01M135	CENTER PILLAR	100K0552
	01M201	PANEL FRAME	100K0552
	01M210	FENDER	100K0552
	01M220	SEAT	100K0552
	01M225	STEP	100K0552
	01M301	ROPS	100K0552
	FRONT WHEEL/REAR WHEEL	01R10101	FRONT WHEEL (18*8.50-8)
01R10102		FRONT WHEEL (18*8.50-8)	100K0552
01R11001		REAR WHEEL (26*12.00-12)	100K0552
01R11002		REAR WHEEL (26*12.00-12)	100K0552
LABELS	01S101	LABEL	100K0552
ACCESSORIES	01T105	ACCESSORIES AND SERVICE PARTS	100K0552
OPTION	01U800	ALTERNATOR KIT [OPTION]	100K0552
	01U802	ALTERNATOR [COMPONENT PARTS] [OPTION]	100K0552

Item	Part No.	Description	Book
OPTION	01U805	WARKING LIGHT KIT [OPTION]	100K0552

CRANKCASE



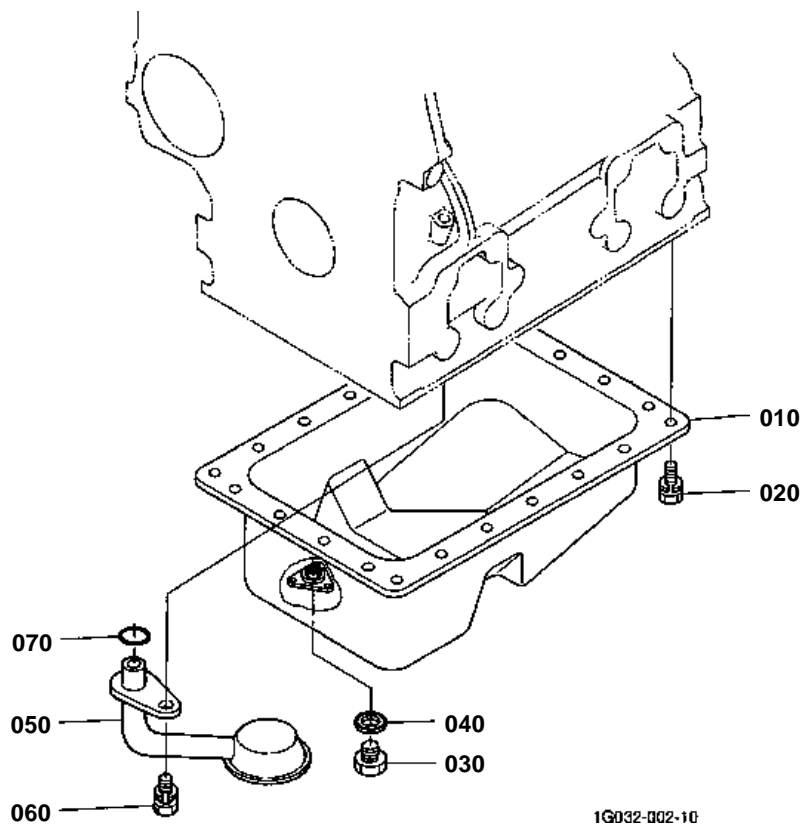
1G032-001-10

**CRANKCASE**

↔ Interchangeable; ≠ not interchangeable; ← new for old; → old for new

REF.No	Part No.	Description	Q'ty	S.No.	I/C	REMARKS	Weight (kgf)	Weight (lb)
010	16611-01013	COMP.CRANKCASE	1	<=YK0004			32	70.4
010	16611-01014	COMP.CRANKCASE	1	>=YC0001	←		32.5	71.5
010	16611-01016	COMP.CRANKCASE	1	>=1G0001	←		0	0
020	15451-96270	CAP SEALING	4				0.012	0.0264
030	15221-03490	CAP SEALING	1				0.02	0.044
040	15261-96010	PLUG	3				0.002	0.0044
050	16683-96020	PLUG	1				0.47	1.034
060	16241-96010	PLUG	3				0.007	0.0154
070	15521-96020	PLUG	2				0.003	0.0066
080	17391-96160	PLUG EXPANSION	3				0.003	0.0066
090	16271-96160	PLUG EXPANSION	1				0.025	0.055
100	16225-94510	PIN STRAIGHT	2				0.001	0.0022
110	16221-94530	PIN STRAIGHT	2				0.006	0.0132
120	16221-94520	PIN STRAIGHT	2				0.005	0.011
130	15231-33960	PIN PIPE	2				0.001	0.0022
140	16241-33650	PIN PIPE	1				0.002	0.0044
150	16241-96262	PLUG FUEL CAMSHAFT	1				0.007	0.0154
160	16261-56280	PIN START SPRING	1				0.004	0.0088
170	16282-96010	PLUG	1				0.09	0.198
180	16271-55350	BUSH GOVERNOR GEAR	1				0.06	0.132
190	15221-33610	PLUG	1				0.009	0.0198
200	15021-33660	GASKET	1				0.001	0.0022
210	15221-33700	O RING	1				0.001	0.0022
220	06311-55020	PLUG	1				0.031	0.0682
230	04714-00200	GASKET	1				0.002	0.0044

OIL PAN



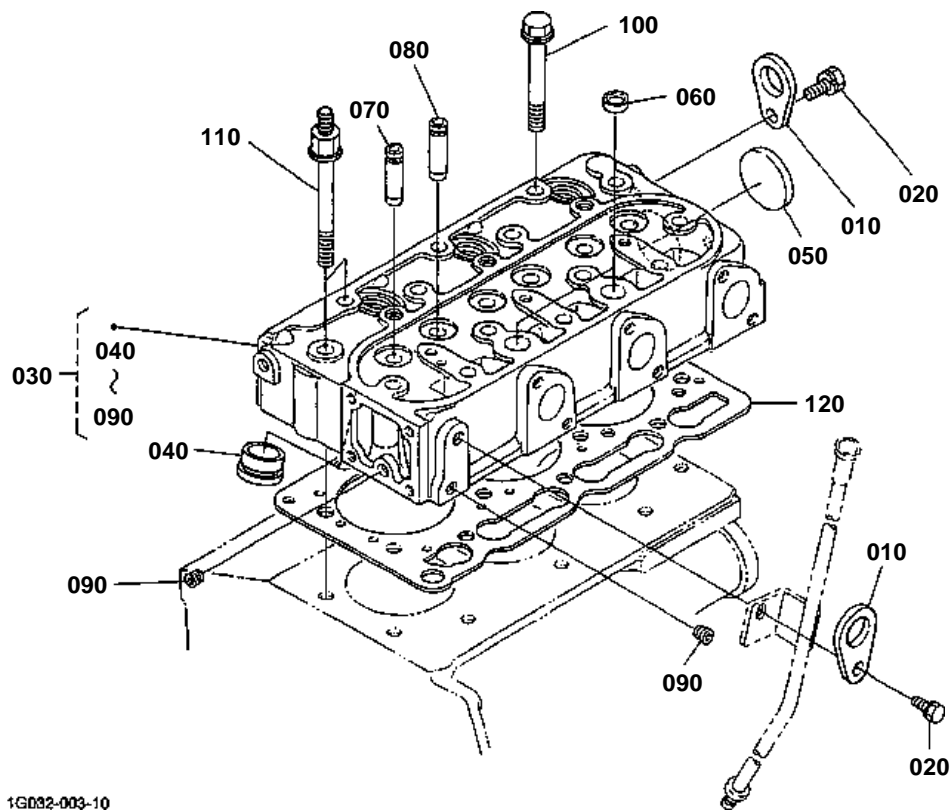


OIL PAN

↔ Interchangeable; ≠ not interchangeable; ← new for old; → old for new

REF.No	Part No.	Description	Q'ty	S.No.	I/C	REMARKS	Weight (kgf)	Weight (lb)
010	K2561-86110	COMP.OIL PAN	1				0.93	2.046
020	01023-50612	BOLT	22				0.005	0.011
030	15221-33750	PLUG	1				0.032	0.0704
040	6C090-58960	GASKET	1				0.002	0.0044
050	16385-32110	FILTER OIL	1				0.11	0.242
060	01123-50816	BOLT	1				0.011	0.0242
070	04814-00160	O RING	1				0.001	0.0022

CYLINDER HEAD



1G032-003-10

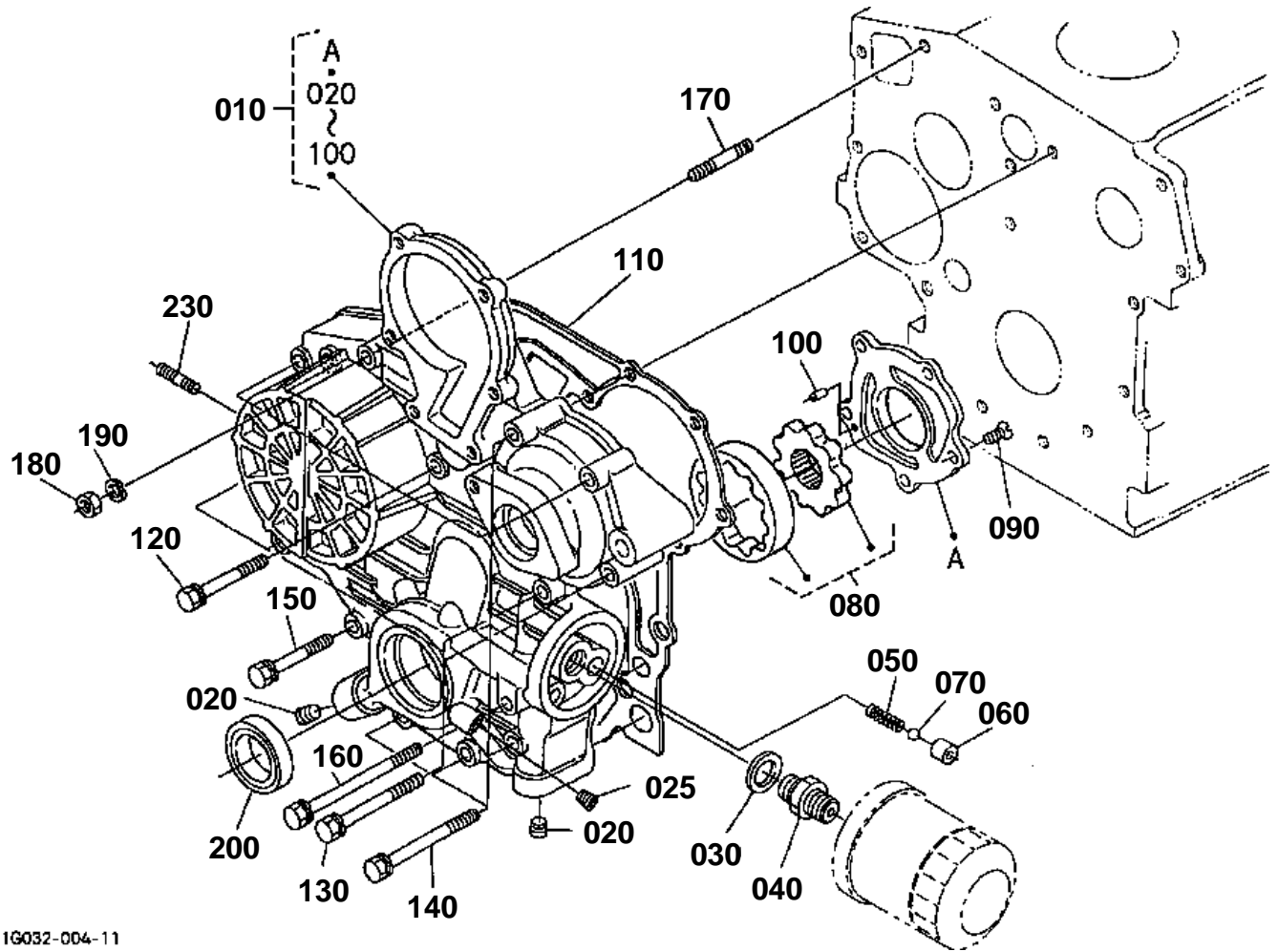


CYLINDER HEAD

↔ Interchangeable; ≠ not interchangeable; ← new for old; → old for new

REF.No	Part No.	Description	Q'ty	S.No.	I/C	REMARKS	Weight (kgf)	Weight (lb)
010	15221-01750	HOOK ENGINE	2				0.04	0.088
020	01123-60814	BOLT	2				0.008	0.0176
030	16022-03040	COMP.CYLINDER HEAD	1				10.1	22.22
040	16020-03142	COMBUSTION CHAMBER	3			NOT SALE	0	0
050	15321-96260	CAP SEALING	1				0.014	0.0308
060	15261-03370	CAP SEALING	2				0.005	0.011
070	16241-13540	GUIDE INLET VALVE	3				0.02	0.044
080	16241-13560	GUIDE EXHAUST VALVE	3				0.01	0.022
090	15261-96010	PLUG	2				0.002	0.0044
100	16241-03450	BOLT CYLINDER HEAD	12				0.07	0.154
110	16216-03450	BOLT CYLINDER HEAD	2				0.07	0.154
120	16221-03310	GASKET CYLINDER HEAD	1				0.075	0.165

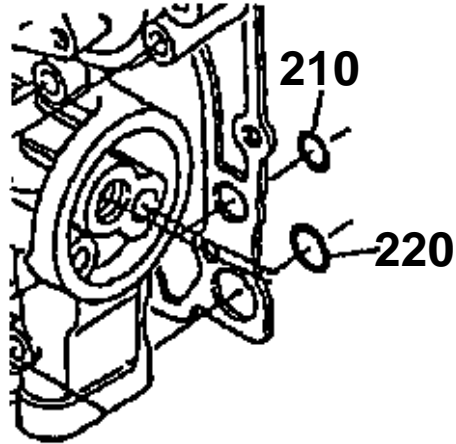
GEAR CASE



1G032-004-11

210 04814-06100

220 04814-00150



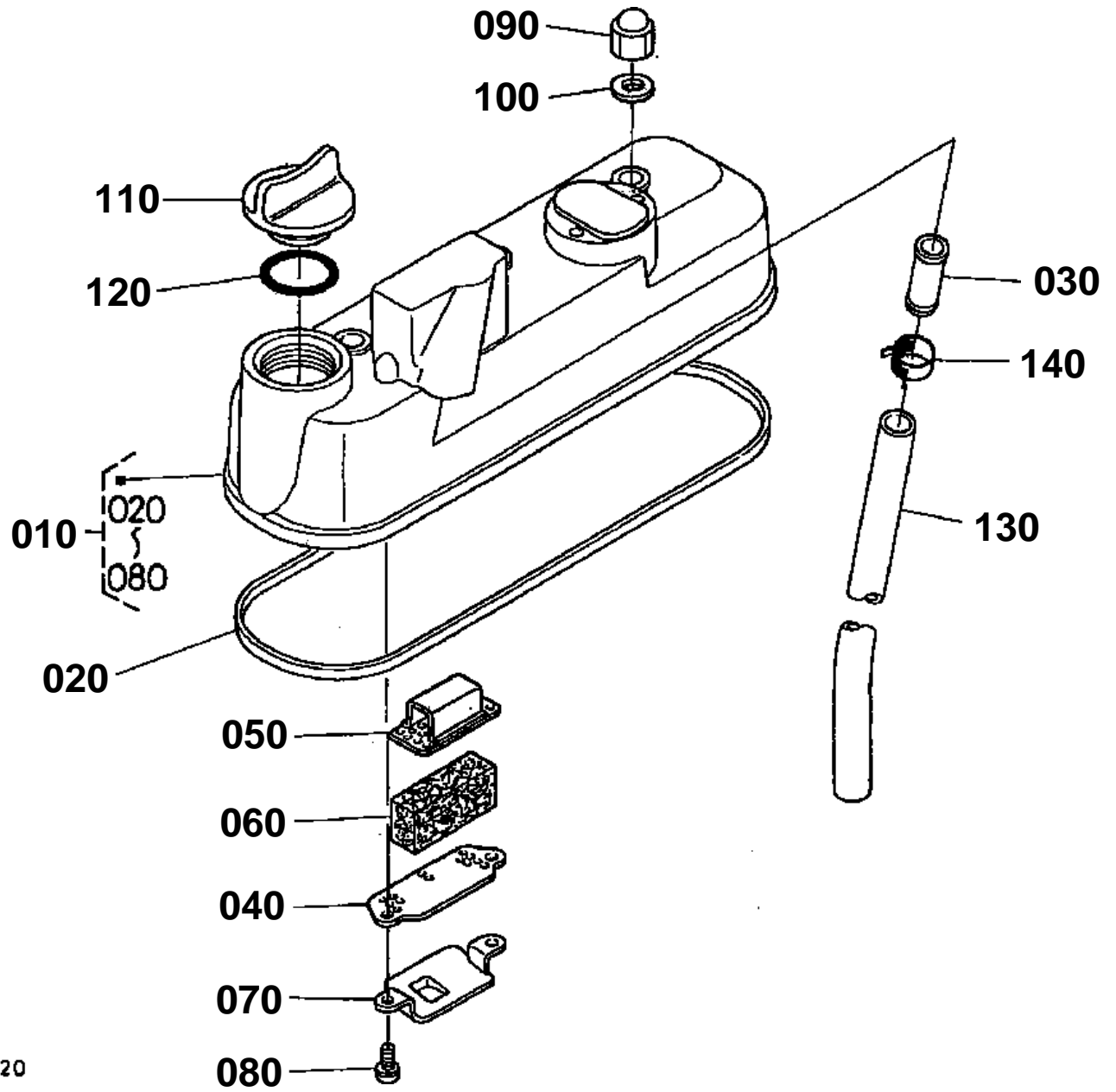
16216-806-10

**GEAR CASE**

↔ Interchangeable; ≠ not interchangeable; ← new for old; → old for new

REF.No	Part No.	Description	Q'ty	S.No.	I/C	REMARKS	Weight (kgf)	Weight (lb)
010	16216-04020	COMP.CASE GEAR	1	<=1S7639			2.45	5.39
010	16216-04025	COMP.CASE GEAR	1	>=1U0007	≠		0	0
010	16216-04026	COMP.CASE GEAR	1	>=1W0006	≠		2.45	5.39
020	16241-96020	PLUG	2				0.015	0.033
025	15521-96020	PLUG	1				0.003	0.0066
030	04011-50180	WASHER PLAIN	1				0.012	0.0264
040	15241-32290	JOINT PIPE	1				0.053	0.1166
050	16241-36950	SPRING	1				0.015	0.033
060	16241-36930	SEAT VALVE	1				0.012	0.0264
070	07715-00201	BALL	1				0.008	0.0176
080	16241-35070	ASSY ROTOR OIL PUMP	1				0.27	0.594
090	03017-50620	SCREW CR-REC-BD-HD	5				0.005	0.011
100	05012-00410	PIN STRAIGHT	2				0.001	0.0022
110	16264-04130	GASKET GEAR CASE	1	<=1S7639			0.01	0.022
110	16264-04132	GASKET GEAR CASE	1	>=1U0001	←		0	0
120	01023-50645	BOLT	3				0.01	0.022
130	01023-60650	BOLT	4				0.015	0.033
140	01023-50655	BOLT	4				0.012	0.0264
150	01023-50665	BOLT	1				0.015	0.033
160	16241-91040	BOLT	1				0.015	0.033
170	16245-91530	STUD	1				0.01	0.022
180	02056-50060	NUT	1				0.002	0.0044
190	04512-60060	WASHER SPRING	1				0.001	0.0022
200	16241-04212	SEAL OIL	1				0.012	0.0264
210	04814-06100	O RING	2	<=1S7639			0.003	0.0066
220	04814-00150	O RING	2	<=1S7639			0.001	0.0022
230	16245-91540	STUD	2				0.005	0.011

HEAD COVER



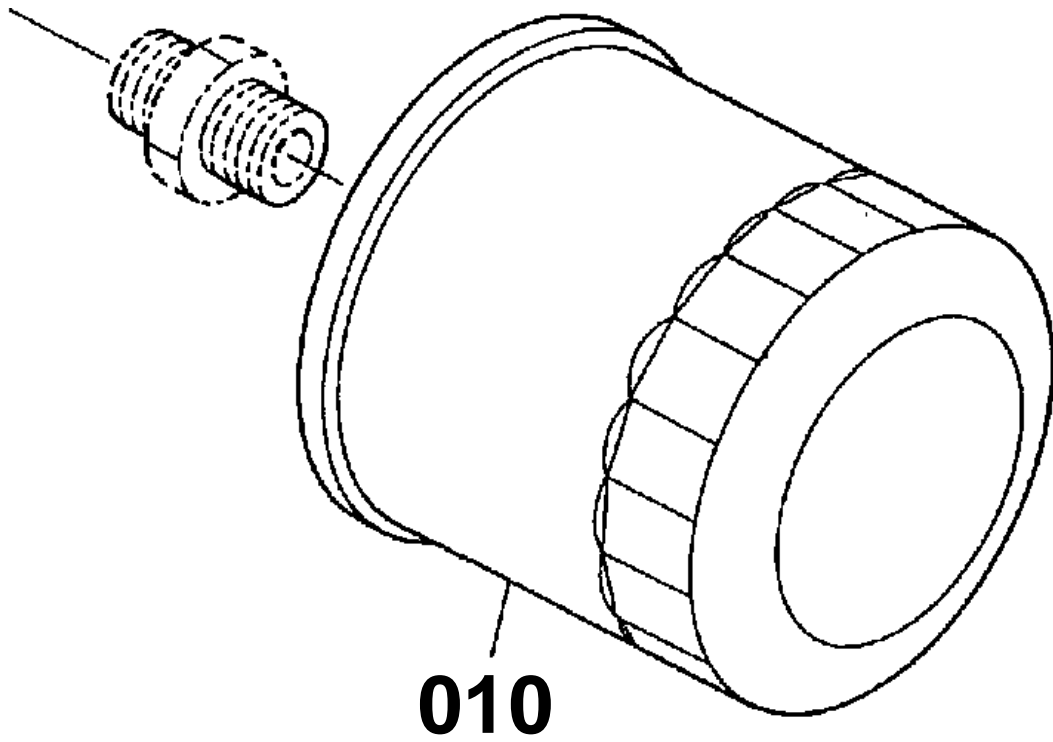
16216-006-20



HEAD COVER

↔ Interchangeable; ≠ not interchangeable; ← new for old; → old for new

REF.No	Part No.	Description	Q'ty	S.No.	I/C	REMARKS	Weight (kgf)	Weight (lb)
010	16261-14503	ASSY COVER CYL.HEAD	1				0.78	1.716
020	16261-14520	GASKET HEAD COVER	1				0.01	0.022
030	16241-05550	JOINT BREATHER PIPE	1				0.02	0.044
040	16241-05140	PLATE B/THER ELEMENT	1				0.005	0.011
050	16241-05150	PLATE B/THER ELEMENT	1				0.01	0.022
060	16241-05670	ELEMENT BREATHER	1				0.01	0.022
070	16241-05370	OIL SHIELD BREATHER	1				0.01	0.022
080	03024-50510	SCREW WITH WASHER	2				0.002	0.0044
090	15952-92330	NUT	3				0.01	0.022
100	15951-96660	GASKET	3				0.001	0.0022
110	15852-33140	PLUG OIL FILLER	1				0.038	0.0836
120	04814-50300	O RING	1				0.001	0.0022
130	16271-05510	PIPE BREATHER	1				0.06	0.132
140	16241-33510	BAND PIPE	1				0.005	0.011
140	16259-05580	CLAMP HOSE	1		↔		0	0



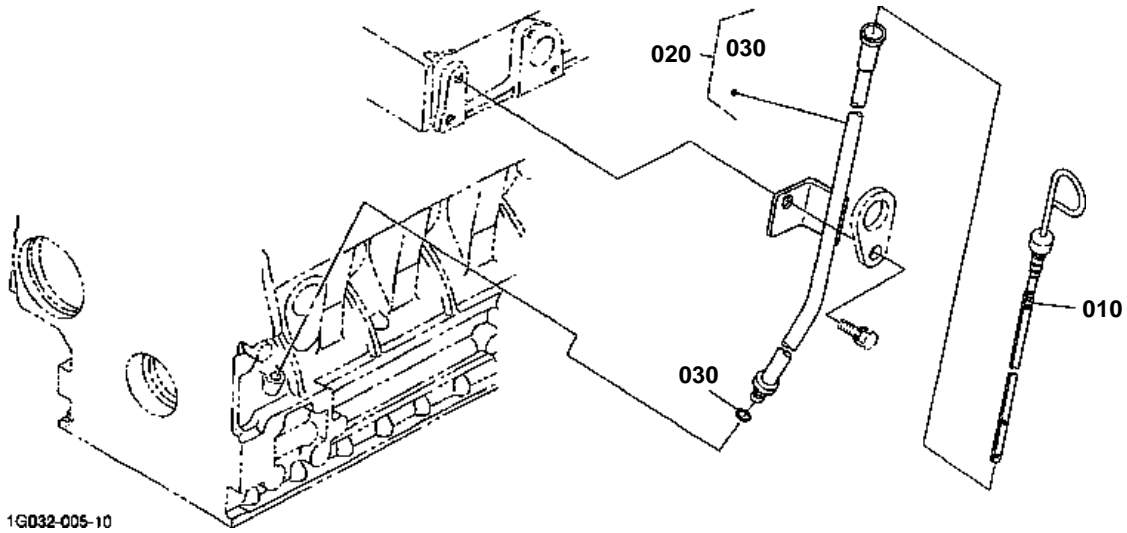
16615-003-10



OIL FILTER

↔ Interchangeable; ≠ not interchangeable; ← new for old; → old for new

REF.No	Part No.	Description	Q'ty	S.No.	I/C	REMARKS	Weight (kgf)	Weight (lb)
010	15241-32090	ASSY CARTRIDGE OIL	1				0.35	0.77



1G032-005-10



Download the full PDF manual instantly.

Our customer service e-mail:

aservicemanualpdf@yahoo.com