

Instructions for Parts Books

The heading at the top of the page will be the same for the picture of the parts as it is for the page with the part numbers.

Definition of column headings on part number pages:

REF.No → The number referring to the part on the picture page of the parts book.

Part No. → The number assigned to this part at the time of printing the parts book.

Description → Description of part.

Q'ty → Quantity of part used on that page.

S.No. → Serial number range of the equipment that this part will fit.

>= Your serial number should be greater than or equal to the number shown.

<= Your serial number should be lesser than or equal to the serial number shown.

I/C → Interchangeability of part shown.

↔ The part shown will work for the older and later serial number.

The part shown is not interchangeable with the other serial number.

← new for old

→ old for new

Remarks → Notes about this particular part. Sometimes this may say except [FR] or [CA]

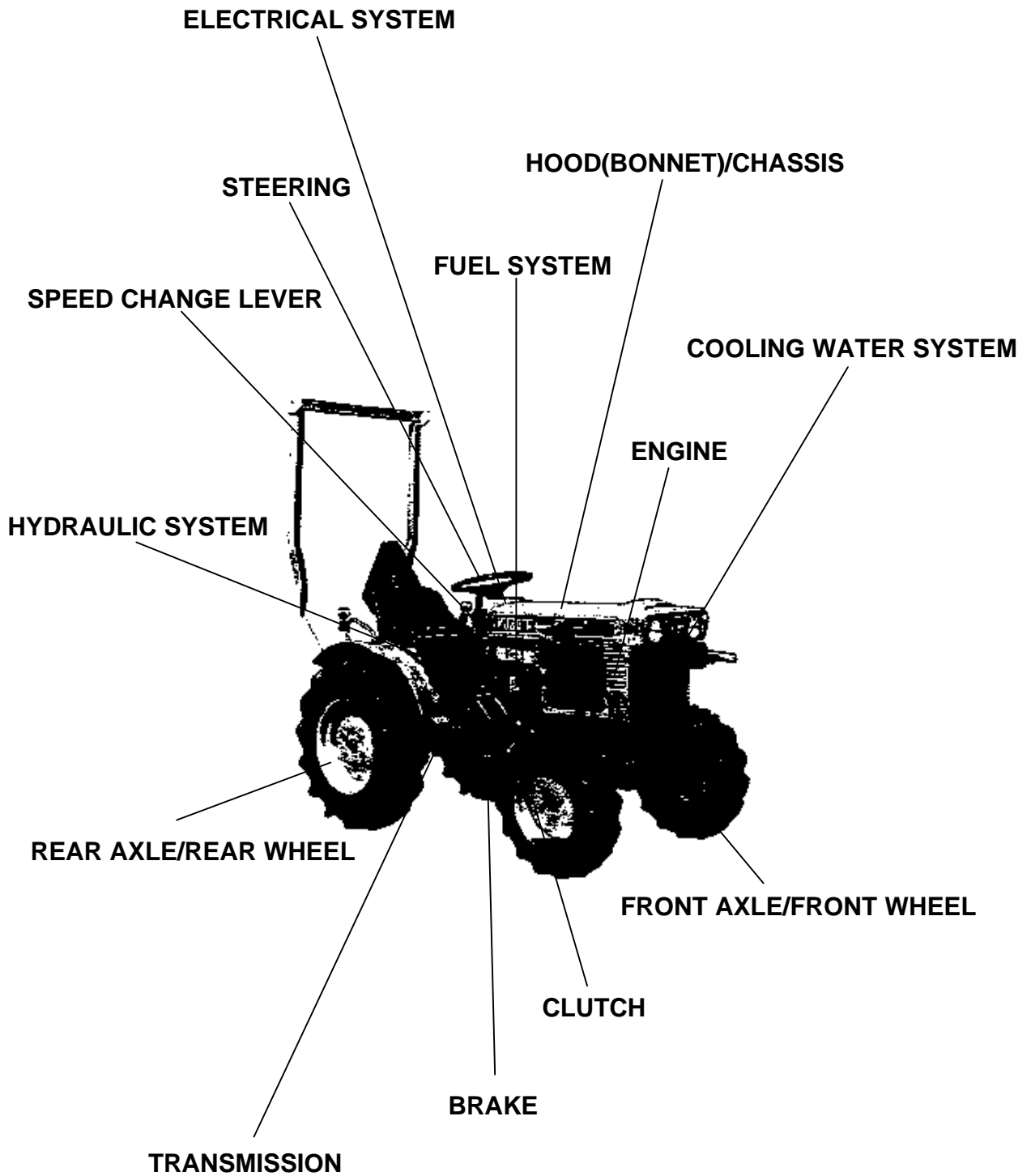
Note about Country Codes:

The parts books we use in the United States of America may also contain information about a part that would be different in another country. It is important that you are aware of the country codes in some instances.

Symbol	Country
A	United States of America
CA	Canada
FR	France
GR	Greece
PO	Portugal
AU	Australia

If the remarks column says for example EXCEPT [FR] this part works in all countries except France. That means it will work here in the USA.

ALL PRODUCT INDEX
B5100E-P



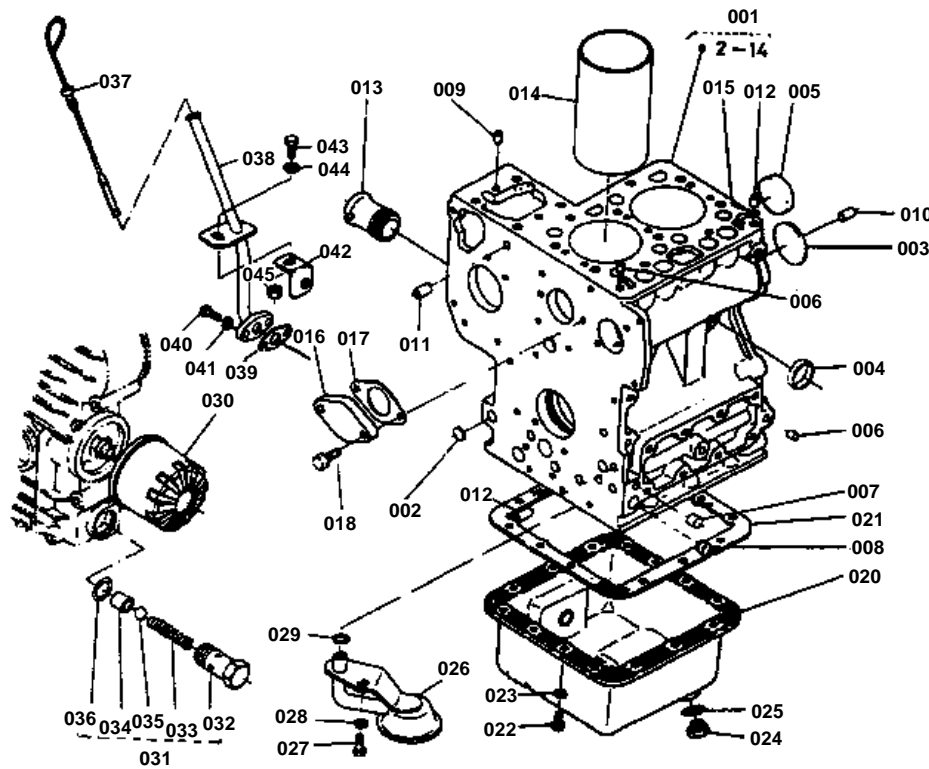
LABELS

ACCESSORIES

Item	Part No.	Description	Book	
ENGINE	01T001	CRANKCASE GROUP	100K0037	
	01T002	CYLINDER HEAD GROUP	100K0037	
	01T003	GEAR CASE GROUP	100K0037	
	01T004	BEARING CASE GROUP	100K0037	
	01T005	BREATHER GROUP	100K0037	
	01T006	INLET MANIFOLD GROUP	100K0037	
	01T007	VALVE ROCKER ARM GROUP	100K0037	
	01T008	HEAD COVER GROUP	100K0037	
	01T009	CAMSHAFT GROUP	100K0037	
	01T010	PISTON CRANK SHAFT GROUP	100K0037	
	01T011	FLYWHEEL GROUP	100K0037	
	01T012	NOZZLE HOLDER GROUP	100K0037	
	01T013	INJECTION PUMP GROUP	100K0037	
	01T014	SPEED CONTROL PLATE GROUP	100K0037	
	01T015	GOVERNOR GROUP	100K0037	
	01T016	DYNAMO GROUP	100K0037	
	01T017	CLUTCH GROUP	100K0037	
	01T018	NAME PLATE GROUP	100K0037	
	01T019	NOZZLE HOLDER GROUP	100K0037	
	01T020	INJECTION PUMP GROUP	100K0037	
	01T021	DYNAMO GROUP	100K0037	
	01T022	STARTER GROUP	100K0037	
	01T023	OIL PRESSURE PUMP GROUP	100K0037	
	TRANSMISSION	01T024	TRANSMISSION CASE GROUP	100K0037
		01T025	CASE COVER GROUP	100K0037
		01T026	AXLE CASE GROUP	100K0037
REAR AXLE/REAR WHEEL	01T02701	REAR WHEEL GROUP	100K0037	
CLUTCH	01T028	CLUTCH ROD GROUP	100K0037	
REAR AXLE/REAR WHEEL	01T029	1ST SHAFT 4TH SHAFT GROUP	100K0037	
	01T030	2ND SHAFT REVERSE SHAFT GROUP	100K0037	
	01T031	3RD 5TH PTO SHAFT GROUP	100K0037	
	01T032	DIFFERENTIAL GROUP	100K0037	
	01T033	MAIN SPEED CHANGE GROUP	100K0037	
SPEED CHANGE LEVER	01T034	AUX.SPEED CHANGE GROUP	100K0037	
	01T035	FRONT DRIVE GROUP	100K0037	
FRONT AXLE/FRONT WHEEL	01T036	BRAKE GROUP	100K0037	
BRAKE HYDRAULIC SYSTEM	01T037	OIL PRESSURE PIPE GROUP	100K0037	
	01T038	CONTROL VALVE GROUP	100K0037	
	01T039	OIL PRESSURE GROUP 1	100K0037	
	01T040	OIL PRESSURE GROUP 2	100K0037	
	01T041	STEERING GROUP	100K0037	
	01T042	BRAKE ROD GROUP	100K0037	
	01T043	ACCELERATOR PEDAL GROUP	100K0037	
	01T044	SEAT GROUP	100K0037	
HOOD(BONNET)/CHASSIS	01T045	NAME PLATE GROUP	100K0037	
LABELS	01T046	CLUTCH HOUSING GROUP	100K0037	
FRONT AXLE/FRONT WHEEL	01T047	FRONT WHEEL SUPPORT GROUP	100K0037	
COOLING WATER SYSTEM	01T048	RADIATOR GROUP	100K0037	
HOOD(BONNET)/CHASSIS	01T049	FENDER GROUP	100K0037	
	01T050	BONNET GROUP	100K0037	
ENGINE	01T051	MUFFLER GROUP	100K0037	
FUEL SYSTEM	01T052	FUEL TANK GROUP	100K0037	
ELECTRICAL SYSTEM	01T053	BATTERY GROUP	100K0037	
	01T054	PANEL GROUP	100K0037	
ENGINE	01T061	AIR CLEANER GROUP	100K0037	
FUEL SYSTEM	01T062	FUEL FILTER GROUP	100K0037	
FRONT AXLE/FRONT WHEEL	01T063	FRONT AXLE GROUP [B5100E]	100K0037	
	01T064	FRONT WHEEL GROUP [B5100E-P B5100E-PT]	100K0037	
HYDRAULIC SYSTEM	01T065	3-POINT LINKAGE GROUP [B5100D-P B5100E-P B5100E-PT]	100K0037	

Item	Part No.	Description	Book
ACCESSORIES	01T066	ACCESSARY AND SERVICE PARTS GROUP	100K0037

CRANKCASE GROUP



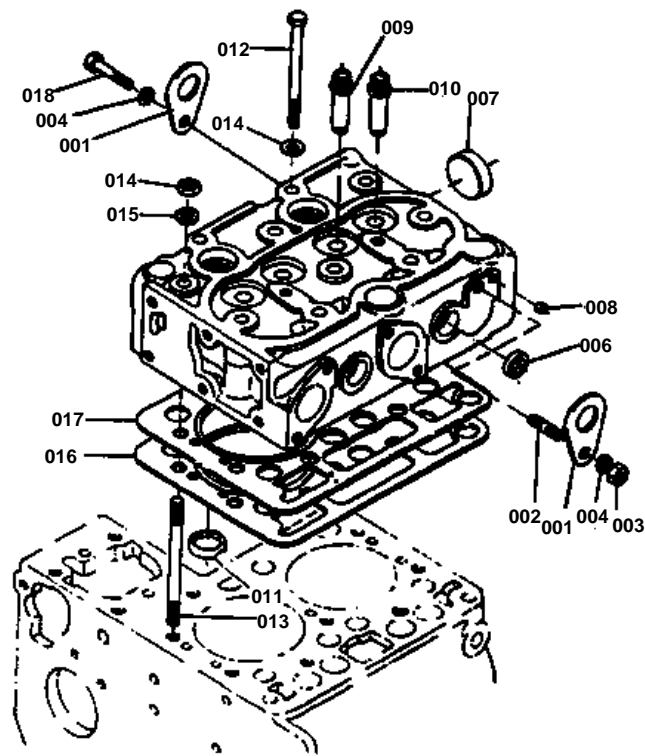
<p>REF.No.18 15261-7391-2 18 01053-50620 19 04512-50060</p> <p>016 018 019 l : 9.5-Bmm</p>
<p>REF.No.20 • 15262-0161-0 • 15262-0161-3</p> <p>Discontinance</p>
<p>REF.No.6 15261-9601-0 7 15521-9602-0 8 15521-9603-0</p>
<p>REF.No.26 15261-3211-2</p> <p>(Donty Radet) R R25-R30</p>

**CRANKCASE GROUP**

↔ Interchangeable; ≠ not interchangeable; ← new for old; → old for new

REF.No	Part No.	Description	Q'ty	S.No.	I/C	REMARKS	Weight (kgf)	Weight (lb)
001	15261-01010	ASSY CRANKCASE	1			REF.No.002 TO 014	0	0
002	06311-75015	PLUG EXPANSION	3				0.002	0.0044
003	06311-75040	PLUG EXPANSION	1				0.02	0.044
004	15321-96260	CAP SEALING	3				0.014	0.0308
005	15221-03490	CAP SEALING	1				0.02	0.044
006	14301-33610	PLUG	5	≤123399			0.001	0.0022
006	15261-96010	PLUG	5	≥123400			0.002	0.0044
007	14301-33630	PLUG	3	≤123399			0.001	0.0022
007	15521-96020	PLUG	3	≥123400			0.003	0.0066
008	15221-33640	PLUG	1	≤123399			0.003	0.0066
008	15521-96030	PLUG	1	≥123400			0.007	0.0154
009	05012-00609	PIN STRAIGHT	2				0.003	0.0066
010	05012-00814	PIN STRAIGHT	2				0.006	0.0132
011	15221-33650	PIN PIPE	1				0.004	0.0088
012	15231-33960	PIN PIPE	2				0.001	0.0022
013	15261-72880	PIPE WATER	1				0.07	0.154
014	15261-02310	LINER CYLINDER	2				0.376	0.8272
015	15221-33700	O RING	1				0.001	0.0022
016	15261-73910	COVER WATER	1	≤2265			0.13	0.286
016	15261-73912	COVER WATER	1	≥1001			0	0
017	15261-73920	GASKET WATER COVER	1				0	0
018	01053-50620	BOLT	2	≤2265			0.006	0.0132
018	01023-50618	BOLT	2	≥10001			0.006	0.0132
019	04512-50060	WASHER SPRING	2				0	0
020	15262-01610	OIL PAN	1	≤1295			1.12	2.464
020	15262-01613	OIL PAN	1	≥1001			0	0
021	15261-01520	GASKET OIL PAN	1				0	0
022	15381-91090	BOLT	14				0	0
023	04512-50060	WASHER SPRING	14				0	0
024	15221-33750	PLUG	1				0.032	0.0704
025	15109-33660	GASKET	1				0.001	0.0022
026	15261-32110	FILTER OIL	1	≤1295			0.14	0.308
026	15261-32112	FILTER OIL	1	≥1001			0	0
027	01153-50816	BOLT	1				0.01	0.022
028	04512-50080	WASHER SPRING	1				0	0
029	04810-00140	O RING	1				0.001	0.0022
030	15241-32090	ASSY CARTRIDGE OIL	1				0.35	0.77
031	15261-36070	ASSY VALVE RELIEF	1			REF.No.032 TO 036	0.078	0.1716
032	99999-99999	BLANK	0			ORDER BY REF.No.033	0	0
033	99999-99999	BLANK	0			ORDER BY REF.No.033	0	0
034	99999-99999	BLANK	0			ORDER BY REF.No.033	0	0
035	07715-03213	BALL	1				0.004	0.0088
036	04810-00150	O RING	1				0.001	0.0022
037	15261-36410	GAUGE OIL	1				0.031	0.0682
038	15262-36420	GUIDE OIL GAUGE	1				0.175	0.385
039	15261-36430	GASKET OIL GAUGE	1				0	0
040	01053-50618	BOLT	2				0.006	0.0132
041	04512-50060	WASHER SPRING	2				0	0
042	15262-36440	SUPPORT	1				0.036	0.0792
043	01153-50820	BOLT	1				0.012	0.0264
043	01150-50820	BOLT	1	≥10001			0.011	0.0242
044	04013-50080	WASHER PLAIN	1				0	0
045	02156-50080	NUT	1				0.004	0.0088
045	02114-50080	NUT	1	≥10001			0.005	0.011

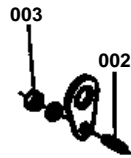
CYLINDER HEAD GROUP



005-6
J1

REF. No. 2 01513-50816

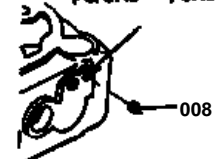
3 02156-50080



REF. No. 5 15261-0304-3

8 15131-0138-0

φ5.5H8 → φ6H8



REF. No. 8 15261-9601-0

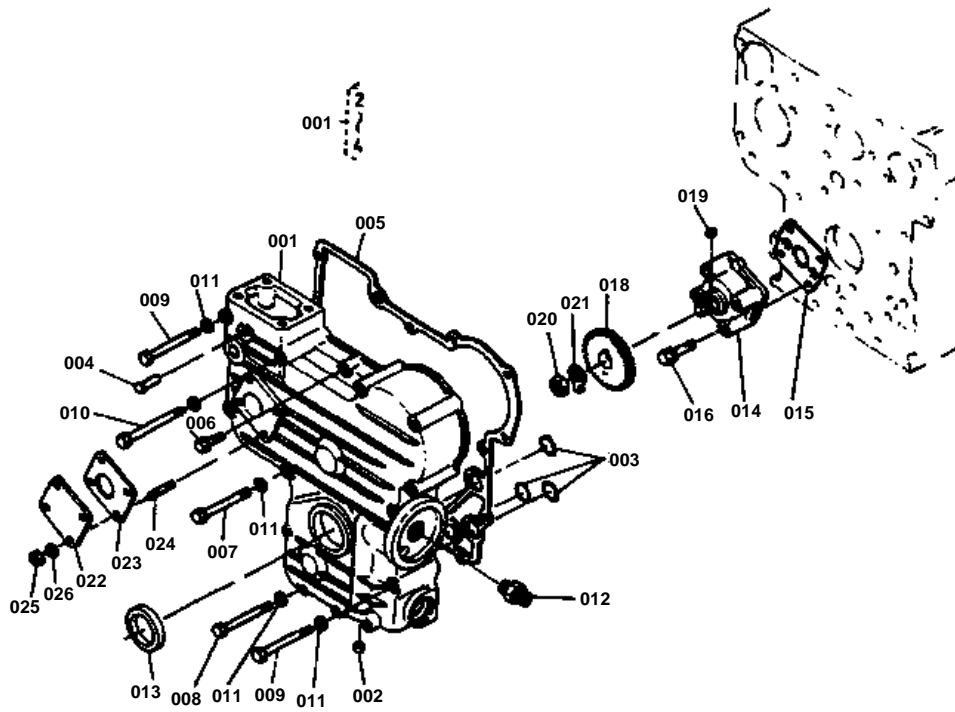


**CYLINDER HEAD GROUP**

↔ Interchangeable; ≠ not interchangeable; ← new for old; → old for new

REF.No	Part No.	Description	Q'ty	S.No.	I/C	REMARKS	Weight (kgf)	Weight (lb)
001	15221-01750	HOOK ENGINE	2				0.04	0.088
002	01513-50816	STUD	2	<=43771			0.009	0.0198
002	01513-50816	STUD	1	>=43772			0.009	0.0198
003	02156-50080	NUT	2	<=43771			0.004	0.0088
003	02156-50080	NUT	1	>=43772			0.004	0.0088
004	04512-50080	WASHER SPRING	2				0	0
005	15261-03040	ASSY CYLINDER HEAD	1	<=43771		REF.No.006 TO 011	0	0
006	15261-03043	ASSY CYLINDER HEAD	1	>=1001		REF.No.006 TO 011	6.8	14.96
006	15261-03370	CAP SEALING	3				0.005	0.011
007	15321-96260	CAP SEALING	1				0.014	0.0308
008	15261-96860	PLUG BLIND	2	<=43771			0.001	0.0022
008	15131-01380	PLUC PIN	2	>=43772			0.001	0.0022
008	15261-96010	PLUG	2	>=123400			0.002	0.0044
009	15261-13540	GUIDE INLET VALVE	2				0.02	0.044
010	15261-13560	GUIDE EXHAUST VALVE	2				0.02	0.044
011	99999-99999	BLANK	0			ORDER BY REF.No.005	0	0
012	15261-03450	BOLT CYLINDER HEAD	8				0	0
013	15261-03410	STUD CYLINDER HEAD	2				0	0
014	15261-03510	NUT CYLINDER HEAD	2				0.006	0.0132
015	15261-03540	WASHER PLAIN	10				0.002	0.0044
016	15261-03310	GASKET CYLINDER HEAD	1				0	0
017	15261-03320	SHIM CYLINDER H/G	1				0.024	0.0528
018	01153-50816	BOLT	1	>=43772			0.01	0.022

GEAR CASE GROUP



REF. No. 6 01053-50630

11 04512-50060



Change of bolt
with spring washer.

REF. No. 16 15261-9102-0

17 04512-50060



Change of bolt
with spring washer.

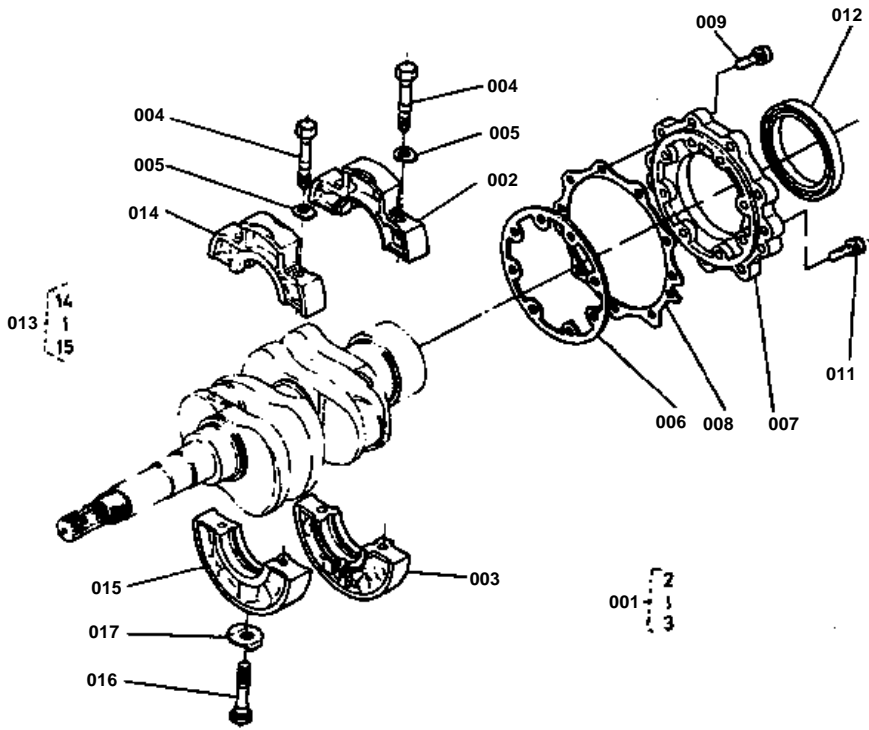


GEAR CASE GROUP

↔ Interchangeable; ≠ not interchangeable; ← new for old; → old for new

REF.No	Part No.	Description	Q'ty	S.No.	I/C	REMARKS	Weight (kgf)	Weight (lb)
001	15381-04020	ASSY CASE GEAR	1			REF.No.002 TO 004	0	0
002	15221-33640	PLUG PIN	2				0.003	0.0066
003	04811-06130	O RING	3				0.001	0.0022
004	15221-56280	PIN START SPRING	1				0.006	0.0132
005	15261-04130	GASKET GEAR CASE	1				0	0
006	01053-50630	BOLT	1	≤2265			0.009	0.0198
006	01023-50630	BOLT	1	≥1001			0.008	0.0176
007	01053-50660	BOLT	3				0.014	0.0308
008	01053-50665	BOLT	8				0.015	0.033
009	01053-50670	BOLT	1				0.014	0.0308
010	14611-91060	BOLT	1				0.015	0.033
011	04512-50060	WASHER SPRING	14	≤2265			0	0
011	04512-50060	WASHER SPRING	13	≥2266			0	0
012	15241-32290	PIPE JOINT	1				0.053	0.1166
013	09550-00008	SEAL OIL	1				0.01	0.022
014	15261-35010	ASSY PUMP OIL	1				0.32	0.704
015	15261-35150	GASKET OIL PUMP	1				0	0
016	15261-91020	BOLT	4	≤147903			0	0
016	15261-91022	BOLT	4	≥1001			0.012	0.0264
017	04512-50060	WASHER SPRING	4	≤147903			0	0
018	15261-35660	GEAR OIL PUMP DRIVE	1				0	0
019	05712-00410	KEY FEATHER	1				0.001	0.0022
020	02016-50100	NUT	1				0.009	0.0198
021	04211-50100	WASHER CLAW	1				0.002	0.0044
022	15223-83340	COVER	1				0.152	0.3344
023	15221-88130	GASKET	1				0	0
024	15221-88210	STUD	4				0.005	0.011
025	02056-50060	NUT	4				0.002	0.0044
026	04512-50060	WASHER SPRING	4				0	0

BEARING CASE GROUP



REF. No. 9 01053-50620
10 04512-50060
11 01053-50625



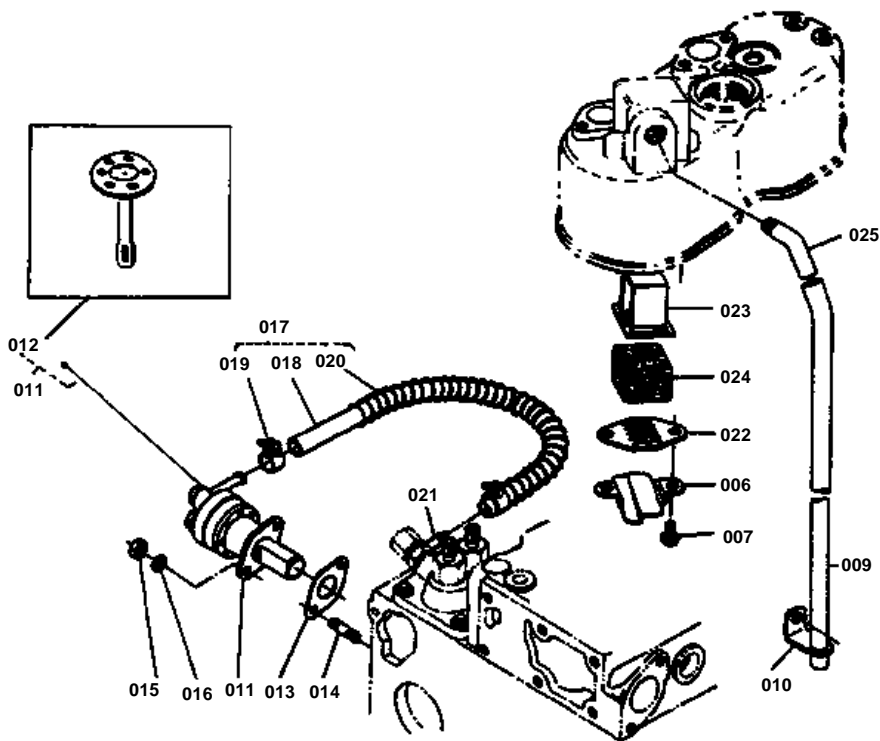
Change of bolt
with spring washer.

**BEARING CASE GROUP**

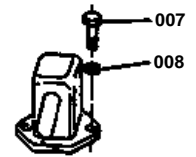
↔ Interchangeable; ≠ not interchangeable; ← new for old; → old for new

REF.No	Part No.	Description	Q'ty	S.No.	I/C	REMARKS	Weight (kgf)	Weight (lb)
001	15261-04090	ASSY CASE MAIN BRG.	1			REF.No.002 003	0.8	1.76
002	99999-99999	BLANK	0			ORDER BY REF.No.001	0	0
003	99999-99999	BLANK	0			ORDER BY REF.No.001	0	0
004	15261-04540	BOLT BEARING CASE	4				0.02	0.044
005	15261-04570	WASHER BEARING CASE	4				0.001	0.0022
006	15261-04360	GASKET BEARING GASE	1				0	0
007	15261-04810	COVER BEARING CASE	1				0.204	0.4488
008	15261-04820	GASKET BRG CASE COV.	1				0	0
009	01053-50620	BOLT	9	≤2265			0.006	0.0132
009	01023-50620	BOLT	9	≥1001			0.006	0.0132
010	04512-50060	WASHER SPRING	17	≤2265			0	0
011	01053-50625	BOLT	8	≤2265			0.007	0.0154
011	01023-50626	BOLT	8	≥1001			0	0
012	09560-00007	SEAL OIL	1				0.029	0.0638
013	15261-04040	ASSY CASE MAIN BRG.	1			REF.No.014 015	0.687	1.5114
014	99999-99999	BLANK	0			ORDER BY REF.No.013	0	0
015	99999-99999	BLANK	0			ORDER BY REF.No.013	0	0
016	15261-04560	BOLT BEARING CASE	1				0.02	0.044
017	15261-04590	WASHER BEARING CASE	1				0.004	0.0088

BREATHER GROUP

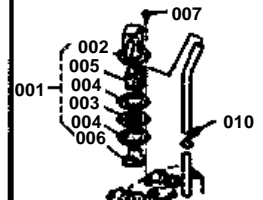


REF. No. 7 01053-50618
8 04512-50060



Change of bolt
with spring washer.

- REF. No. 1 15241-0501-0
2 15241-0511-0
3 15241-0514-0
4 15321-0543-0
5 15241-0567-0
6 15261-0537-0
7 01023-50618
10 15261-0559-0

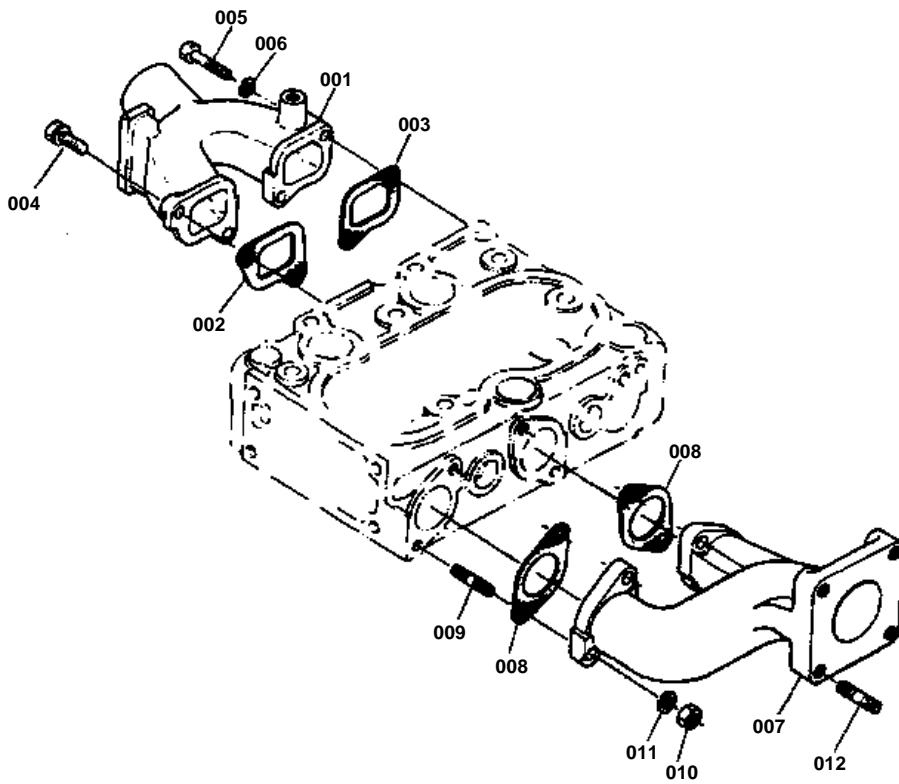


**BREATHER GROUP**

↔ Interchangeable; ≠ not interchangeable; ← new for old; → old for new

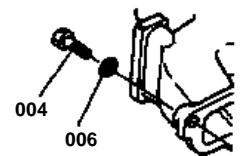
REF.No	Part No.	Description	Q'ty	S.No.	I/C	REMARKS	Weight (kgf)	Weight (lb)
001	15241-05010	ASSY BREATHER	1	<=2420		REF.No.002 TO 005	0.15	0.33
001	15241-05110	BREATHER	1	<=2420			0.13	0.286
002	15241-05140	PLATE ELEMENT	1	<=2420			0.009	0.0198
003	15321-05430	GASKET COVER	2	<=2420			0	0
004	15241-05670	ELEMENT BREATHER	1	<=2420			0.008	0.0176
005	15261-05370	OIL SHIELD BREATHER	1	<=2420			0.005	0.011
005	15951-05370	OIL SHIELD BREATHER	1	>=2421			0.005	0.011
006	01053-50618	BOLT	2	<=2265			0.006	0.0132
006	01023-50618	BOLT	2	<=2420			0.006	0.0132
007	03024-50510	SCREW	2	>=2421			0.002	0.0044
008	04512-50060	WASHER SPRING	2				0	0
009	15261-05510	PIPE BREATHER	1				0.069	0.1518
010	15261-05590	CLAMP PIPE	1	<=2420			0.004	0.0088
010	15951-05590	CLAMP PIPE	1	>=2421			0.003	0.0066
011	15381-52030	ASSY PUMP FUEL	1			REF.No.012	0	0
012	15381-52040	COMP DIAPHRAGM	1				0	0
013	15241-52140	GASKET FUEL PUMP	1				0	0
014	01513-50616	STUD	2				0.004	0.0088
015	02056-50060	NUT	2				0.002	0.0044
016	04512-50060	WASHER SPRING	2				0	0
017	15261-42010	ASSY PIPE FUEL	1			REF.No.018 019	0.032	0.0704
017	15263-42010	ASSY PIPE FUEL	1	>=1001		REF.No.018 TO 020	0.04	0.088
018	99999-99999	BLANK	0			ORDER BY REF.No.017	0	0
019	14301-42750	CLIP PIPE	2				0.005	0.011
020	66591-54250	SPRING	1				0.01	0.022
021	14111-42410	JOINT ELEMENT 1	1				0.025	0.055
022	15951-05140	PLATE ELEMENT 1	1	>=2421			0.005	0.011
023	15521-05150	PLATE ELEMENT 2	1	>=2421			0.01	0.022
024	15521-05670	ELEMENT BREATHER	1	>=2421			0.01	0.022
025	15521-05550	JOINT BREATHER PIPE	1	>=2421			0.04	0.088

INLET MANIFOLD GROUP



REF. No. 4 01053-50620

6 04512-50060



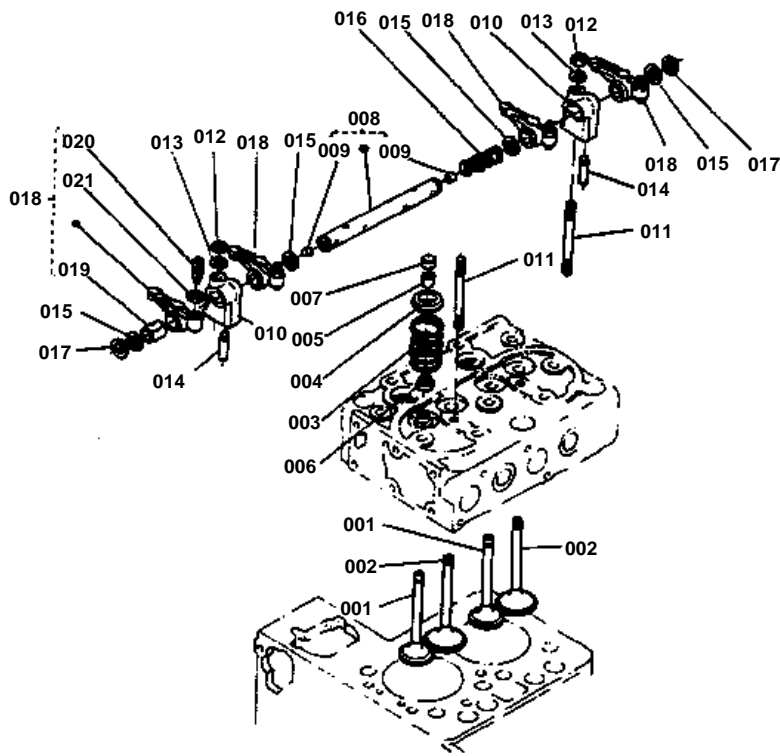
Change of bolt
with spring washer.

**INLET MANIFOLD GROUP**

↔ Interchangeable; ≠ not interchangeable; ← new for old; → old for new

REF.No	Part No.	Description	Q'ty	S.No.	I/C	REMARKS	Weight (kgf)	Weight (lb)
001	15262-11760	MANIFOLD INLET	1				0.328	0.7216
002	15261-11820	GASKET IN-MANIFOLD	1				0	0
003	15261-11830	GASKET IN-MANIFOLD	1				0	0
004	01053-50620	BOLT	3	<=2265			0.006	0.0132
004	01023-50620	BOLT	3	>=1001			0.006	0.0132
005	01053-50650	BOLT	1				0.011	0.0242
006	04512-50060	WASHER SPRING	4	<=2265			0	0
006	04512-50060	WASHER SPRING	1	>=2266			0	0
007	15262-12310	MANIFOLD EXHAUST	1				1.19	2.618
008	15261-12360	GASKET EX-MANIFOLD	2				0	0
009	15381-91530	STUD	4				0	0
010	02056-50060	NUT	4				0.002	0.0044
011	04512-50060	WASHER SPRING	4				0	0
012	01513-50822	STUD	4				0.01	0.022

VALVE ROCKER ARM GROUP



REF.No. 11 15951-1441-0
Change of length.

REF.No. 18 15261-1403-2
20 15261-1423-2



$l : 26 \rightarrow 25.5\text{mm}$

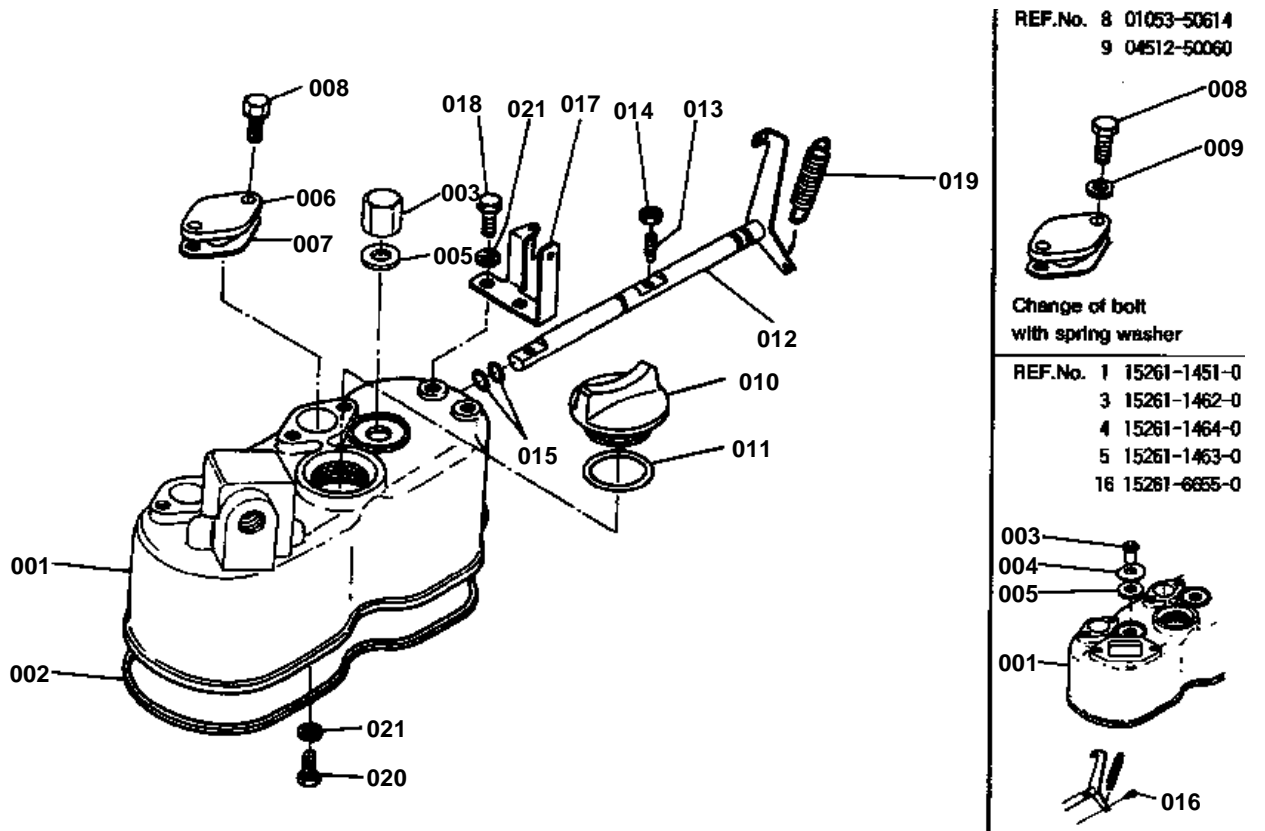


VALVE ROCKER ARM GROUP

↔ Interchangeable; ≠ not interchangeable; ← new for old; → old for new

REF.No	Part No.	Description	Q'ty	S.No.	I/C	REMARKS	Weight (kgf)	Weight (lb)
001	15261-13110	VALVE INLET	2				0.043	0.0946
002	15261-13120	VALVE EXHAUST	2				0.038	0.0836
003	15261-13240	SPRING VALVE	4				0.02	0.044
004	15261-13330	RETAINER VALVE SP.	4				0	0
005	15261-13360	COLLET VALVE SPRING	8				0.004	0.0088
006	15261-13150	SEAL VALVE STEM	4				0.001	0.0022
007	15261-13280	CAP VALVE	4				0	0
008	15261-14050	ASSY SHAFT ROCKER	1			REF.No.009	0.082	0.1804
009	03410-00606	SCREW SET	2				0	0
010	15261-14310	BRACKET ROCKER ARM	2				0.003	0.0066
011	15261-14410	STUD	2	<=2420			0.02	0.044
011	15951-14410	STUD	2	>=2421			0	0
012	15261-92010	NUT	2				0.005	0.011
013	15261-94010	WASHER PLAIN	2				0.002	0.0044
014	15261-14420	SCREW SET	1				0.002	0.0044
015	15261-14430	WASHER	4				0.001	0.0022
016	15261-14310	SPRING ROCKER ARM	1				0.003	0.0066
017	04612-00110	CIR-CLIP EXTERNAL	2				0.001	0.0022
018	15261-14030	ASSY ROCKER ARM	4	<=2420		REF.No.019 TO 021	0	0
018	15261-14032	ASSY ROCKER ARM	4	>=2421		REF.No.019 TO 021	0	0
019	15261-14180	BUSH ROCKER ARM	4				0	0
020	15261-14230	SCREW ADJUSTING	4	<=2420			0	0
020	15261-14232	SCREW ADJUSTING	4	>=2421			0.006	0.0132
021	15261-14240	NUT	4				0.002	0.0044

HEAD COVER GROUP





HEAD COVER GROUP

↔ Interchangeable; ≠ not interchangeable; ← new for old; → old for new

REF.No	Part No.	Description	Q'ty	S.No.	I/C	REMARKS	Weight (kgf)	Weight (lb)
001	15261-14510	COVER CYLINDER HEAD	1	≤2420			0.51	1.122
001	15951-14510	COVER CYLINDER HEAD	1	≥2421			1.913	4.2086
002	15261-14520	GASKET HEAD COVER	1				0.003	0.0066
003	15261-14620	NUT HEADCOVER	2	≤2420			0.014	0.0308
003	15951-92330	NUT CAP	2	≥2421			0	0
004	15261-14640	WASHER HEAD COVER	2	≤2420			0.006	0.0132
005	15261-14630	GASKET NUT	2	≤2420			0.002	0.0044
005	15951-96660	GASKET NUT	2	≥2421			0.001	0.0022
006	15261-66630	COVER DECOMP HOLE	2				0.023	0.0506
007	15261-66640	GASKET	2				0	0
008	01053-50614	BOLT	4	≤2265			0.005	0.011
008	01023-50614	BOLT	4	≥10001			0.005	0.011
009	04512-50060	WASHER SPRING	4	≤2265			0	0
010	15221-33140	PLUG OIL FILLER	1				0.038	0.0836
011	04811-50300	O RING	1				0.001	0.0022
012	15261-66040	ASSY SHAFT DECOMP	1				0	0
013	15261-66350	BOLT DECOMPRESS	2				0.002	0.0044
014	02056-50050	NUT	2				0.002	0.0044
015	04811-00080	O RING	2				0.001	0.0022
016	15261-66550	STOPPER DECOMP SHAFT	1	≤2420			0.01	0.022
017	15261-66190	HOLDER DECOMP WIRE	1				0.03	0.066
018	01053-50614	BOLT	2				0.005	0.011
019	15221-66280	SPRING DECOMPRESS	1				0.008	0.0176
020	15221-66410	BOLT	1				0.005	0.011
021	04512-50060	WASHER SPRING	3				0	0



Download the full PDF manual instantly.

Our customer service e-mail:

aservicemanualpdf@yahoo.com