

Service Manual

JS 210 LC

110026 On

PUBLISHED BY THE
PRODUCT SUPPORT DEPARTMENT

OF JCB SERVICE :

23/7, MATHURA ROAD,

BALLABHGARH, FARIDABAD

TEL. : 0129-4299000

Part No. : 9803/6510

General Information 1

Care & Safety 2

Routine Maintenance 3

Attachments A

Body & Framework B

Electrics C

Hydraulics E

Transmission F

Brakes G

Track & Running Gear J

Engine K

CONTENTS	PAGE NO.
Machine Identification Plate	1 - 1
Typical Vehicle Identification Number (VIN)	1 - 1
Typical Engine Identification Number	1 - 1
Torque Settings	2 - 1
Service Tools	
- Body and Frame	4 - 1
- Electrics	4 - 3
- Hydraulics	4 - 6
- Transmission	4 - 14
Sealing and Retaining Compounds	5 - 1

Introduction

This publication is designed for the benefit of JCB Distributor Service Engineers who are receiving, or have received, training by JCB Technical Training Department.

These personnel should have a sound knowledge of workshop practice, safety procedures, and general techniques associated with the maintenance and repair of hydraulic earthmoving equipment.

Renewal of oil seals, gaskets, etc., and any component showing obvious signs of wear or damage is expected as a matter of course. It is expected that components will be cleaned and lubricated where appropriate, and that any opened hose or pipe connections will be blanked to prevent excessive loss of hydraulic fluid and ingress of dirt. Finally, please remember above all else **SAFETY MUST COME FIRST!**

The manual is compiled in sections, the first three are numbered and contain information as follows:

- 1** = **General Information** - includes torque settings and service tools.
- 2** = **Care & Safety** - includes warnings and cautions pertinent to aspects of workshop procedures etc.
- 3** = **Routine Maintenance** - includes service schedules and recommended lubricants for all the machine.

The remaining sections are alphabetically coded and deal with Dismantling, Overhaul etc. of specific components, for example:

- A** = **Attachments**
- B** = **Body & Framework ...etc.**

The page numbering in each alphabetically coded section is not continuous. This allows for the insertion of new items in later issues of the manual.

Section contents, technical data, circuit descriptions, operation descriptions etc are inserted at the beginning of each alphabetically coded section.

All sections are listed on the front cover; tabbed divider cards align directly with individual sections on the front cover for rapid reference.

Where a torque setting is given as a single figure it may be varied by plus or minus 3%. Torque figures indicated are for dry threads, hence for lubricated threads may be reduced by one third.

Colour Coding

The following colour coding, used on illustrations to denote various conditions of oil pressure and flow, is standardised throughout JCB Service publications.

~ Red - Full Pressure

Pressure generated from operation of a service. Depending on application this may be anything between neutral circuit pressure and M.R.V. operating pressure.

~ Pink - Pressure

Pressure that is above neutral circuit pressure but lower than that denoted by red.

~ Orange - Servo

Oil pressure used in controlling a device (servo).

~ Blue - Neutral

Neutral circuit pressure.

~ Green - Exhaust

. Light - Cavitation

Green Oil subjected to a partial vacuum due to a drop in pressure (cavitation).

. Yellow - Lock Up

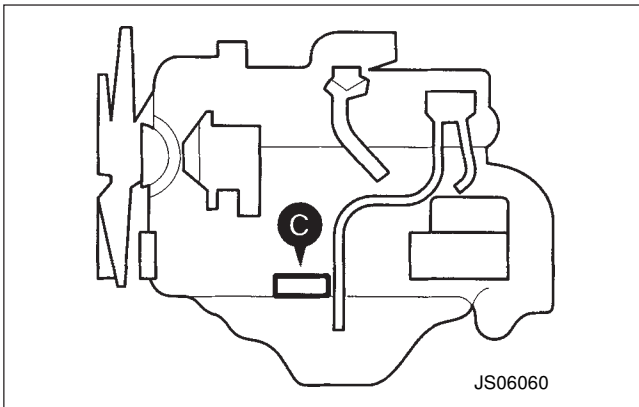
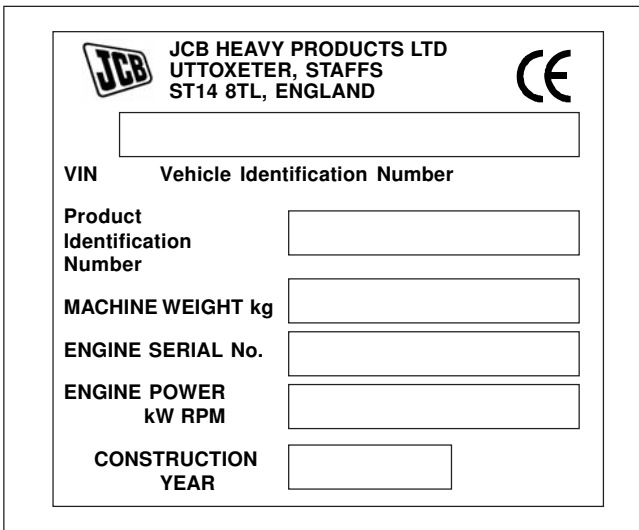
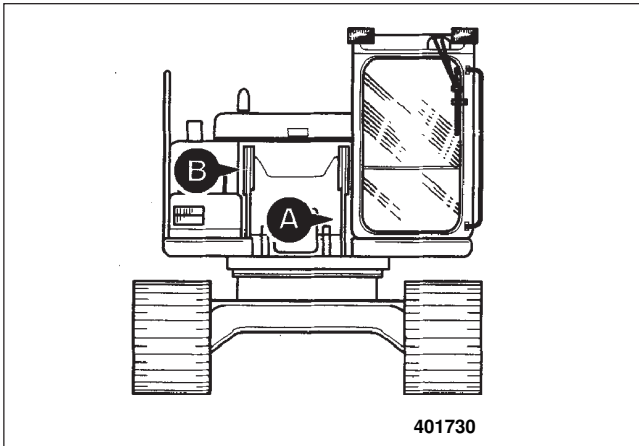
Oil trapped within a chamber or line, preventing movement of components (lock up).

A390940

Machine Identification Plate

Your machine has an identification plate mounted outside the cab at **A**. The serial numbers of the machine and its major units are stamped on the plate.

The machine serial number is inscribed at **B** which is the base plate of the rear frame and the engine number is at **C**.



Typical Vehicle Identification Number (VIN)

SLP JS915 3 E 0 930000
A **B** **C** **D** **E**

- A** World Manufacturer Identification
- B** Machine Model Code
- C** Year of Manufacture:
 - 2 = 2002
 - 3 = 2003
 - 4 = 2004
 - 5 = 2005
 - 6 = 2006
 - 7 = 2007
 - 8 = 2008
- D** Manufacturer Location (E = England)
- E** Product Identification Number (PIN)

Typical Engine Identification Number

6 BGI 145941
A **B** **C**

- A** Engine Type "6 Cylinder"
- B** Build code
- C** Engine Identification Number

Torque Settings

Use only where no torque setting is specified in the test. Values are for dry threads and may be within three per cent of the figures stated. For lubricated threads the values should be REDUCED by one third.

UNF Grade 'S' Bolts

Bolt Size		Hexagon (A/F)		Torque Settings	
In	(mm)	In	Nm	kgf m	lbf ft
1/4	(6.3)	7/16	14	1.4	10
5/18	(7.9)	1/2	28	2.8	20
3/8	(9.5)	9/16	49	5.0	36
7/16	(11.1)	5/8	78	8.0	58
1/2	(12.7)	3/4	117	12.0	87
9/16	(14.3)	13/16	170	17.3	125
5/8	(15.9)	15/16	238	24.3	175
3/4	(19.0)	11/8	407	41.5	300
7/8	(22.2)	15/16	650	66.3	480
1	(25.4)	11/2	970	99.0	715
1 1/4	(31.7)	17/8	1940	198.0	1430
1 1/2	(38.1)	2 1/4	3390	345.0	2500

Metric Grade 8.8 Bolts

Bolt Size		Hexagon (A/F)		Torque Settings	
	(mm)	mm	Nm	kgf m	lbf ft
M5	(5)	8	7	0.7	5
M6	(8)	10	12	1.2	9
M8	(8)	13	28	3.0	21
M10	(10)	17	56	5.7	42
M12	(12)	19	98	10	72
M16	(16)	24	244	25	180
M20	(20)	30	476	48	352
M24	(24)	36	822	84	607
M30	(30)	46	1633	166	1205
M36	(36)	55	2854	291	2105

River Nut Bolts/Screws

Bolt Size	(mm)	Torque Settings (for steel rivet nuts)		
		Nm	kgf m	lbf ft
M3	(3)	1.2	0.12	0.9
M4	(4)	3.0	0.3	2.0
M5	(5)	6.0	0.6	4.5
M6	(6)	10.0	1.0	7.5
M8	(8)	24.0	2.5	18.0
M10	(10)	48.0	4.9	35.5
M12	(12)	82.0	8.4	60.5

Note : All bolts used on JCB machines are high tensile and must not be replaced by bolts of a lesser tensile specification.

CONTENTS	PAGE NO.
Safety Notices	1 - 1
General Safety	1 - 1
Operating Safety	1 - 3
Maintenance Safety	1 - 5
Safety Decals	1 - 7

In this publication and on the machine, there are safety notices. Each notice starts with a signal word. The signal word meanings are given below.

DANGER

Denotes an extreme hazard exists. If proper precautions are not taken, it is highly probable that the operator (or others) could be killed or seriously injured.
INT-1-2-1

WARNING

Denotes a hazard exists. If proper precautions are not taken, the operator (or others) could be killed or seriously injured.
INT-1-2-2

CAUTION

Denotes a reminder of safety practices. Failure to follow these safety practices could result in injury to the operator (or others) and possible damage to the machine.
INT-1-2-3

All construction and agricultural equipment can be hazardous. When a JCB Excavator is correctly operated and properly maintained, it is a safe machine to work with. But when it is carelessly operated or poorly maintained it can become a danger to you (the operator) and others.

Do not work with the machine until you are sure that you can control it.

Do not start any job until you are sure that you and those around you will be safe.

If you are unsure of anything, about the machine or the job, ask someone who knows. Do not assume anything.

Remember

BE CAREFUL
BE ALERT
BE SAFE

GEN-1-6

As well as the warnings in the following pages, specific warnings are given throughout the book. This section is designed to give a safety code for use of the machine generally and for operation and maintenance practices.

Note: This section includes a certain amount of operating safety information. But remember that whenever you drive the machine or operate its controls, you are in effect a machine operator. Therefore you should read and understand the information given in the Operator Handbook before driving the machine or operating its controls.

General Safety

WARNING

Handbook

You and others can be injured if you operate or maintain the machine without first studying this handbook. Read the safety instructions before operating the machine. If you do not understand anything, ask your employer or JCB distributor to explain it. Keep this handbook clean and in good condition. Do not operate the machine without a handbook in the cab, or if there is anything on the machine you do not understand.

INT-1-3-2

WARNING

Decals

You can be injured if you do not obey the decal safety instructions. Keep decals clean. Replace unreadable or missing decals with new ones before operating the machine. Make sure replacement parts include warning decals where necessary.

INT-1-3-4

WARNING

Care and Alertness

All the time you are working with or on the machine, take care and stay alert. Always be careful. Always be alert for hazards.

INT-1-3-5

WARNING

Alcohol and Drugs

It is extremely dangerous to operate machinery when under the influence of alcohol or drugs. Do not consume alcoholic drinks or take drugs before or whilst operating the machine or attachments. Be aware of medicines which can cause drowsiness.

INT-1-3-9

WARNING

Clothing

You can be injured if you do not wear the proper clothing. Loose clothing can get caught in the machinery. Wear protective clothing to suit the job. Examples of protective clothing are: a hard hat, safety shoes, safety glasses, a well fitting overall, ear-protectors and industrial gloves. Keep cuffs fastened. Do not wear a necktie or scarf. Keep long hair restrained.

INT.1.3.6

WARNING

Lifting Equipment

You can be injured if you use faulty lifting equipment. Make sure that lifting equipment is in good condition. Make sure that lifting tackle complies with all local regulations and is suitable for the job. Make sure that lifting equipment is strong enough for the job.

INT.1.3.7

WARNING

Raised Equipment

Raised equipment can fall and injure you. Do not walk or work under raised equipment unless safely supported.

13-1.1-6

DANGER

Before removing the boom from the machine, ensure that the counterweight is adequately supported as in certain ground conditions the machine could tip backwards. Never travel or transport the machine with the boom removed.

BF6-3

Operating Safety

WARNING

Practice

You or others can be killed or seriously injured if you do unfamiliar operations without first practising them. Practice away from the work site on a clear area. Keep other people away. Do not perform new operations until you are sure you can do them safely.

INT-2-1-1

WARNING

Machine Condition

A defective machine can injure you or others. Do not operate a machine which is defective or has missing parts. Make sure the maintenance procedures in this handbook are completed before using the machine.

INT-2-1-2

CAUTION

If you have an attachment which is not covered in this handbook, don't install it, use it or remove it until you have obtained, read and understood the pertinent information. Install attachments only on the machines for which they were designed.

5-5-1-1

WARNING

Entering/Leaving

Always face the machine when entering and leaving the cab. Use the step(s) and handrails. Make sure the step(s), handrails and your boot soles are clean and dry. Do not jump from the machine. Do not use the machine controls as handholds, use the handrails.

INT-2-1-7

WARNING

Controls

You or others can be killed or seriously injured if you operate the control levers from outside the cab. Operate the control levers only when you are correctly seated inside the cab.

INT-2-1-3

WARNING

Visibility

Accidents can be caused by working in poor visibility. Keep windows clean and use your lights to improve visibility. Do not operate the machine if you cannot see properly.

INT-2-1-11

WARNING

Machine Limits

Operating the machine beyond its design limits can damage the machine, it can also be dangerous. Do not operate the machine outside its limits. Do not try to upgrade the machine performance with unapproved modifications.

INT-2-1-4

WARNING

Exhaust Gases

Breathing the machine exhaust gases can harm and possibly kill you. Do not operate the machine in closed spaces without making sure there is good ventilation. If possible, fit an exhaust extension. If you begin to feel drowsy, stop the machine at once. Get out of the cab into fresh air.

INT-2-1-10

DANGER

Sparks

Explosions and fire can be caused by sparks from the exhaust or the electrical system. Do not use the machine in closed areas where there is flammable material, vapour or dust.

INT -2-2-10

WARNING

Engine

The engine has exposed rotating parts. Do not open the engine cover while the engine is running. Do not use the machine with the cover open.

INT-2-1-6/1

WARNING

Passengers

Passengers in or on the machine can cause accidents. The JCB Excavator is a one man machine. Do not carry passengers.

INT -2-2-2

WARNING

Safe Working Loads

Overloading the machine can damage it and make it unstable. Study the lifting and/or digging specifications in this handbook before using the attachment.

INT-2-2-11/1

WARNING

The Long Reach is larger and higher than a normal excavating rig. You must take extra care when you are working in dangerous or restricted height locations such as under power lines, bridges, etc.

8-2-8-10

Operating Safety (cont'd)

CAUTION

Because of the extra length and height of the Long Reach boom and dipper, you must be very careful when slewing. Do not slew quickly and strike the dipper against any obstacle. You may cause severe damage to the rig structure.

8-2-8-11

WARNING

Airborne particles of light combustible material such as straw, grass, wood shavings, etc. must not be allowed to accumulate within the engine compartment or in the propshaft guards (when fitted). Please inspect these areas frequently and clean at the beginning of each work shift or more often if required. Before opening the engine cover, ensure that the top is clear of debris.

5-3-1-12/2

WARNING

Electrical Power Cables

You could be electrocuted or badly burned if you get the machine or its attachments too close to electrical power cables.

You are strongly advised to make sure that the safety arrangements on site comply with the local laws and regulations concerning work near electric power lines.

Buried Electric Power Cables

Before you start using the machine, check with your electricity supplier if there are any buried power cables on the site.

Overhead Electric Power Cables

There is a minimum clearance required for working beneath overhead power cables. You must obtain details from your local electricity supplier.

2-2-5-4

CAUTION

With certain combinations of bucket or attachment and boom/dipper configuration, it is possible for the bucket teeth or attachment extremities to contact and cause damage to the structure of the machine. Check the limit of free movement as the dipper is brought in towards the machine.

8-2-5-2

WARNING

Hazardous Atmospheres

This machine is designed for use in normal outdoor atmospheric conditions. It should not be used in an enclosed area without adequate ventilation. Do not use the machine in a potentially explosive atmosphere, i.e. combustible vapours, gas or dust, without first consulting your JCB Distributor.

INT-2-1-14

Maintenance Safety**⚠ WARNING****Modifications and Welding**

Non-approved modifications can cause injury and damage. Parts of the machine are made from cast iron; welds on cast iron can weaken the structure and break. Do not weld cast iron. Contact your JCB distributor for advice before modifying the machine.

INT-3-1-2/1

⚠ WARNING**Electrical Circuits**

Understand the electrical circuit before connecting or disconnecting an electrical component. A wrong connection can cause injury and/or damage.

INT-3-1-4

⚠ WARNING**Diesel Fuel**

Diesel fuel is flammable; keep naked flames away from the machine. Do not smoke while refuelling the machine or working on the engine. Do not refuel with the engine running. There could be a fire or injury if you do not follow these precautions.

INT-3-2-2

⚠ WARNING**Oil**

Oil is toxic. If you swallow any oil, do not induce vomiting, seek medical advice. Used engine oil contains harmful contaminants which can cause skin cancer. Do not handle used engine oil more than necessary. Always use barrier cream or wear gloves to prevent skin contact. Wash skin contaminated with oil thoroughly in warm soapy water. Do not use petrol, diesel fuel or paraffin to clean your skin.

NT-3-2-3

⚠ WARNING**Hydraulic Fluid**

Fine jets of hydraulic fluid at high pressure can penetrate the skin. Do not use your fingers to check for hydraulic fluid leaks. Do not place your face close to suspected leaks. Hold a piece of cardboard close to suspected leaks and then inspect the cardboard for signs of hydraulic fluid. If hydraulic fluid penetrates the skin, get medical help immediately.

INT-3-1-10/1

⚠ WARNING**Hydraulic Pressure**

Hydraulic fluid at system pressure can injure you. Before disconnecting or connecting hydraulic hoses, stop the engine and operate the controls to release pressure trapped in the hoses. Make sure the engine cannot be started while the hoses are open.

INT-3-1-11/1

⚠ WARNING**Fires**

If your machine is equipped with a fire extinguisher, make sure it is checked regularly. Keep it in the operator's cab until you need to use it.

Do not use water to put out a machine fire, you could spread an oil fire or get a shock from an electrical fire. Use carbon dioxide, dry chemical or foam extinguishers. Contact your nearest fire department as quickly as possible. Firefighters should use self-contained breathing apparatus.

INT-3-2-7/1

⚠ WARNING**Hot Coolant**

The cooling system is pressurised when the engine is hot. Hot coolant can spray out when you remove the filler cap. Let the system cool before removing the filler cap. To remove the cap; turn it to the first notch and let the steam pressure escape, then remove the cap.

INT-3-2-9/1

⚠ CAUTION**Cleaning**

Cleaning metal parts with incorrect solvents can cause corrosion. Use only recommended cleaning agents and solvents.

INT-3-2-11

⚠ WARNING**Soft Ground**

A machine can sink into soft ground. Never work under a machine on soft ground.

INT-3-2-4

⚠ CAUTION**Rams**

The efficiency of the rams will be affected if they are not kept free of solidified dirt. Clean dirt from around the rams regularly. When leaving or parking the machine, close all rams if possible to reduce the risk of weather corrosion.

INT-3-2-10

⚠ WARNING**Hydraulic Hoses**

Damaged hoses can cause fatal accidents.

Inspect the hoses regularly for:

- Damaged end fittings
- Chafed outer covers
- Ballooned outer covers
- Kinked or crushed hoses
- Embedded armouring in outer covers
- Displaced end fittings.

INT-3-3-2

Maintenance Safety (cont'd)**⚠ CAUTION****'O' rings, Seals and Gaskets**

Badly fitted, damaged or rotted 'O' rings, seals and gaskets can cause leakages and possible accidents. Renew whenever disturbed unless otherwise instructed. Do not use Trichloroethane or paint thinners near 'O' rings and seals.

INT-3-2-12

⚠ WARNING**Battery**

A battery with frozen electrolyte can explode if it is used or charged. Do not use a machine with a frozen battery. To help prevent the battery from freezing, keep the battery fully charged.

INT-3-1-7

⚠ WARNING**Battery Gases**

Batteries give off explosive gases. Keep flames and sparks away from the battery. Do not smoke close to the battery. Make sure there is good ventilation in closed areas where batteries are being used or charged. Do not check the battery charge by shorting the terminals with metal; use a hydrometer or voltmeter.

INT-3-1-8

⚠ WARNING**Battery Terminals**

The machine is negatively earthed. Always connect the negative pole of the battery to earth.

When connecting the battery, connect the earth (-) lead last.

When disconnecting the battery, disconnect the earth (-) lead first.

INT-3-1-9

⚠ CAUTION

Never use water or steam to clean inside the cab. The use of water or steam could damage the on-board computer and render the machine inoperable. Remove dirt using a brush or damp cloth.

8-3-4-8

⚠ WARNING**Petrol**

Do not use petrol in this machine. Do not mix petrol with the diesel fuel; in storage tanks the petrol will rise to the top and form flammable vapours.

INT-3-1-6

⚠ WARNING**Arc Welding**

Before carrying out any arc welding on the machine, completely remove the Control Computer and The Display Monitor to avoid damage to the circuits; also disconnect the alternator and battery leads.

When welding items to the mainframe make sure that the earth clamp is positioned on the mainframe and when welding to the undercarriage make sure that the earth clamp is positioned on the undercarriage. If you earth one and weld the other, you may cause severe damage to the slew ring.

Always connect the earth clamp to any other component being welded, i.e. boom or dipper, to avoid damage to pivot pins and bushes.

0008

⚠ WARNING**Repairs**

Do not try to do repairs or any other type of maintenance work you do not understand. Get a Service Manual from your JCB distributor, or get the work done by a specialist engineer.

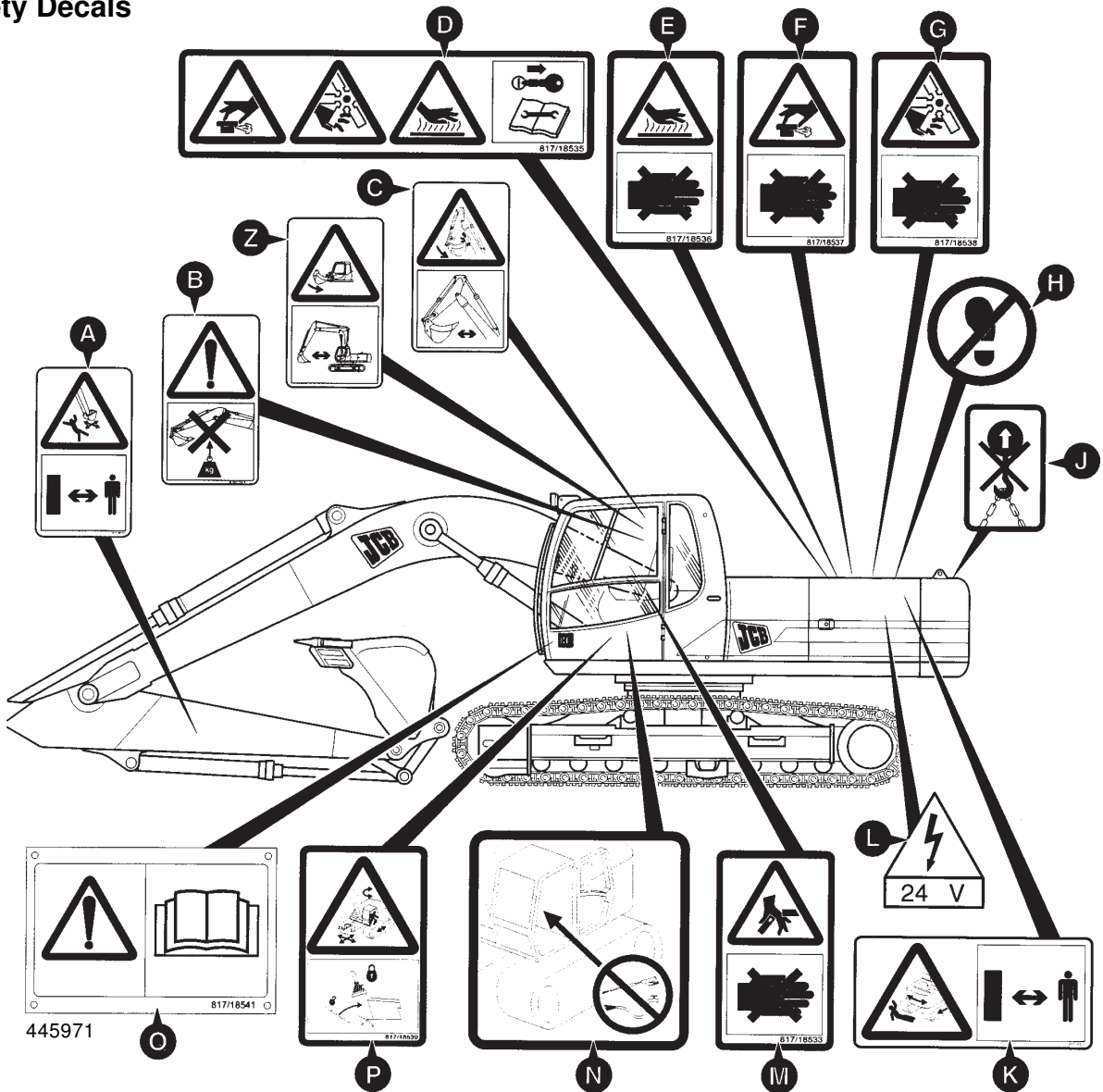
INT-3-1-1

⚠ WARNING**Metal Splinters**

You can be injured by flying metal splinters when driving metal pins in or out. Use a soft faced hammer or drift to remove and fit metal pins. Always wear safety glasses.

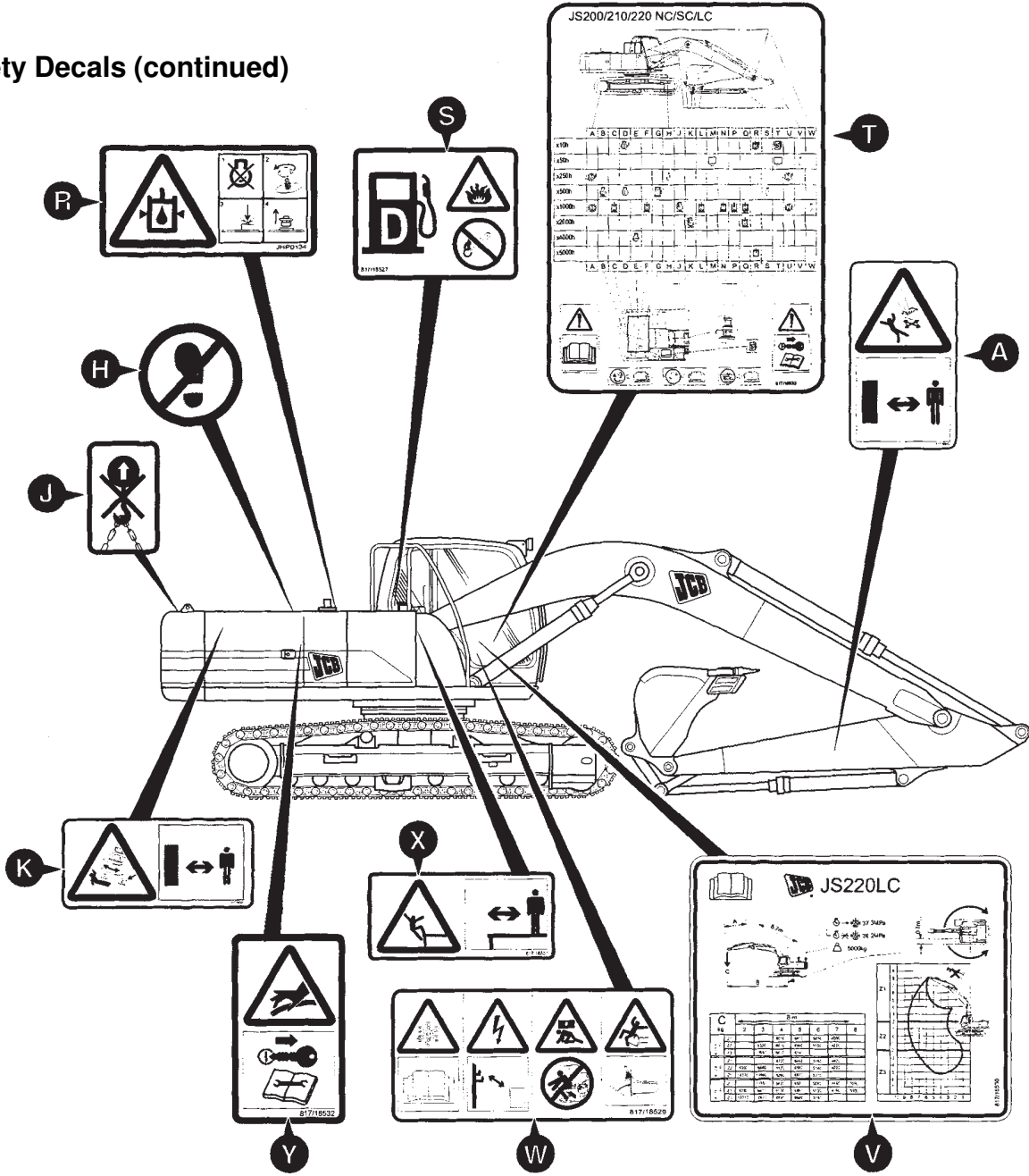
INT-3-1-3

Safety Decals



LABEL	PART No.	DEFINITION
A	817/18542	Warning, Arm or bucket may move; Keep clear.
B	JLP0283	Warning, Do not use excavator for lifting loads.
C	JRP0142	Warning, Bucket can foul the boom when dipper is swinging inwards. 'Supershort' booms only.
D	817/18535	1-Warning, Coolant under pressure. 2-Warning, Risk of severing hands/fingers in rotating parts.
E	817/18536	3-Warning, Hot surfaces. 4-Remove ignition key and refer to operator handbook and maintenance manual.
F	817/18537	Warning, Hot surfaces; Keep hands away.
G	817/18538	Warning, High pressure and hot coolant system ; Keep hands away.
H	817/18566	Warning, Risk of severing finger/hand in rotating parts; Keep hands away.
I	817/18566	Do not walk or place any body weight on this part.
J	JHP0121	Warning, Do not lift machine here.
K	817/18528	Warning counterweight or whole machine may move; Keep clear.
L	817/02370	Warning, 24V.
M	817/18533	Warning, Risk of trapping fingers/hand in door; Keep hands away.
N	JHP0111	Warning. No hosing or jet washing in cab.
P	817/18539	Warning, Unexpected movement of part or whole machine; Move lock lever to the lock position.
Q	817/18541	Warning, Read the operation and maintenance manual.

Safety Decals (continued)



LABEL	PART No.	DEFINITION
R	JHP0134	Warning, High pressure hydraulic system; 1-Stop the engine. 2-Unscrew the box nut. 3-Depress the pressure relief valve until all the tank pressure is released. 4-Remove filler plug/breather assembly as required.
S	817/18527	Diesel fuel, Warning, Flammable substance; No ignition source.
T		Lubrication chart. Refer to 'Chart Definitions' for details.
V		Lifting chart. Refer to 'Chart Definitions' for details.
W	817/18529	1-Warning, Damage may occur when starting from cold temperatures; Refer to the operator's handbook. 2-Warning, Risk of electrocution; Maintain the minimum clearance recommended by your local electricity supplier. 3-Warning, Risk of injury by crushing; Do not lean out of the front window. 4-Warning, Risk of tripping; raise the control lock lever before exiting.
X	817/18531	Warning, Edges without protective railings; Keep clear of edges.
Y	817/18532	Warning, Hoses that may eject a high velocity jet capable of penetrating the skin; Remove ignition key and refer to operator handbook and maintenance manual.

Chart definitions

Typical Lubrication Chart

JS200/210/220 NC/SC/LC

Interval: x10h, x50h, x250h, x500h, x1000h, x2000h, x4000h, x5000h

Component: A, B, C, D, E, F, G, H, J, K, L, M, N, P, Q, R, S, T, U, V, W

Icon identifier

- Excavator grease
- Engine oil change
- Engine oil filter change
- Engine coolant change
- Engine air filter change
- Engine air filter clean
- Transmission oil change
- Transmission oil level
- Fuel (diesel)
- Fuel filter change
- Hydraulic oil change
- Hydraulic tank breather filter change
- Hydraulic oil filter change
- Hydraulic oil filter clean
- Hydraulic oil level
- Engine oil level
- Fuel tank level
- Drain off water/sediment
- When using hammer/crusher/pulveriser
- When using bio-degradeable oil
- When using in wet or severe conditions

Location identifier

A Travel gearbox	H Swing ring bearing	Q Suction strainer
B Engine oil filter	J Air cleaner, outer	R Hydraulic tank
C Plexus filter	K Air cleaner, inner	S Swing ring gear teeth
D Engine oil pan	L Drain line filter	T Fueltank
E Engine cooling system	M Fuel separator	U Slew gearbox
F Servo oil filter	N Hydraulic return filter	V Boom/arm grease points
G Fuel filter	P Hydraulic tank air breather	W Boom/arm grease points

A Holding circuit pressure

B Refer to operators manual before attempting to lift

C Working circuit pressure

D For complete swing of upper structure

E Lift with bucket cylinder retracted

F Mass of counterweight

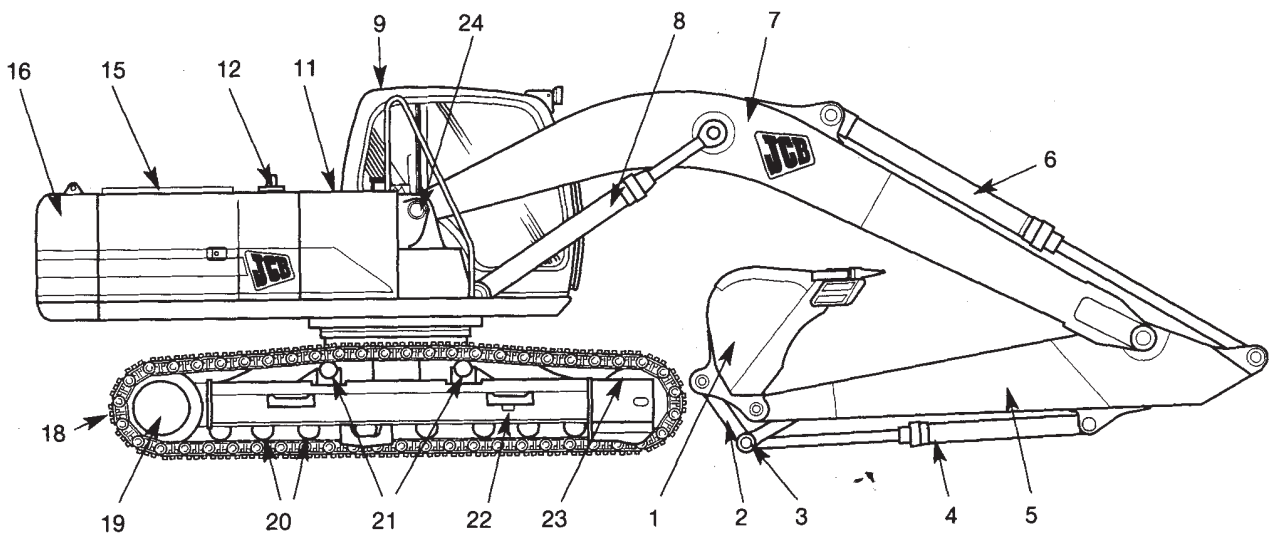
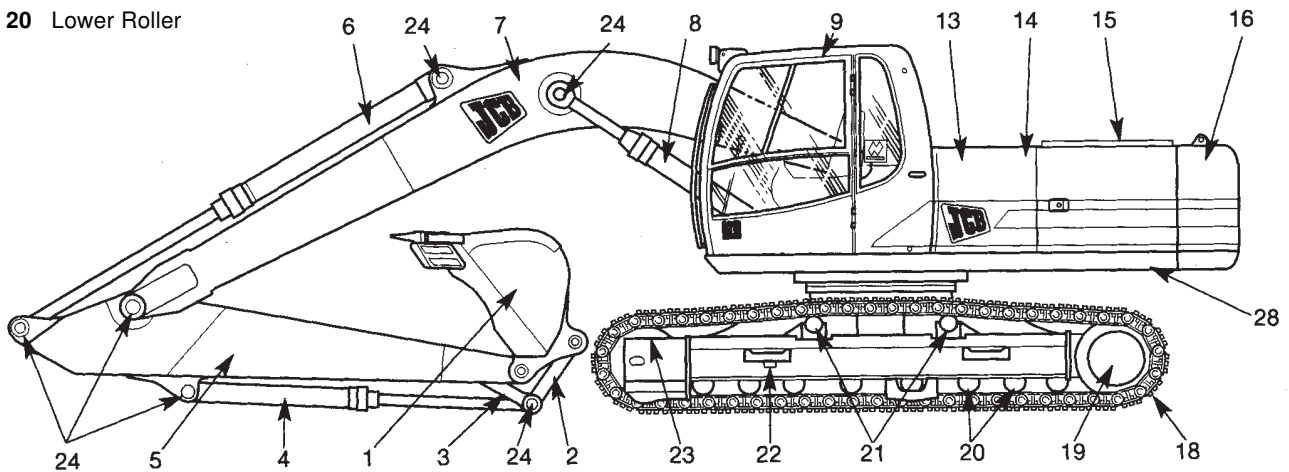
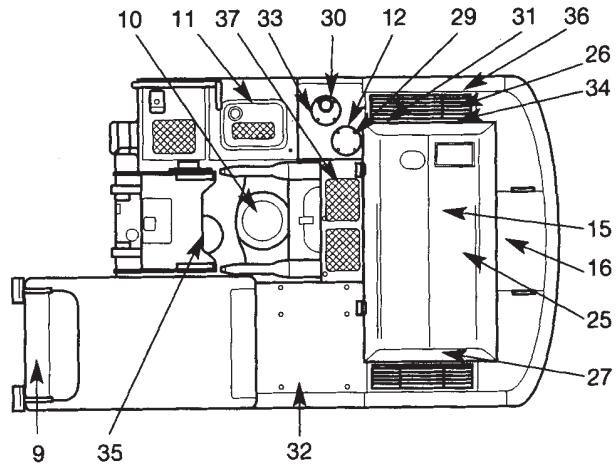
		B m				
		2	3	4	5	6
21	kg	810	810	810	810	810
	22	820	820	820	820	820
	23	830	830	830	830	830
22	kg	820	820	820	820	820
	21	830	830	830	830	830
	23	840	840	840	840	840
23	kg	830	830	830	830	830
	21	840	840	840	840	840
	22	850	850	850	850	850

Contents	Page No.
Identification of Machine Components	1 - 1
Lubricants - Health and Safety	
Hygiene	2 - 1
Storage	2 - 1
Handling	2 - 1
First Aid - Oil	2 - 1
Spillage	2 - 1
Fires	2 - 1
Service Capacities and Lubricants	3 - 1
Service Schedules	3 - 2
Checking for Damage	4 - 1
Cleaning the Machine	4 - 1
Daily Checks	5 - 1
Greasing	6 - 1
Fuel System	
Types of fuels	7 - 1
Filling Tank and Check Fuel Level	7 - 1
Changing Fuel Filter Element	7 - 2
* Cleaning Lift Pump Strainer	7 - 2
Draining Fuel Tank Impurities	7 - 3
Draining Sediment Bowl	7 - 3
Bleeding the Fuel System	7 - 4
Engine	
Changing the Oil and Filter	8 - 1
Checking Oil Level	8 - 1
Changing the Air Filter	8 - 2
Adjustment/Changing Fan Belt	8 - 4
Checking Coolant Level	8 - 6
Cleaning the Radiator and Oil Cooler	8 - 6
Changing Coolant	8 - 7
Hydraulic System	
Checking the Hydraulic Fluid Level	9 - 1
Releasing Tank Pressure	9 - 2
Topping-up Fluid Level	9 - 2
Changing the Hydraulic Fluid	9 - 3
Draining Water and Sediment from the Hydraulic Tank	9 - 4
Cleaning/Changing Suction Strainer	9 - 4
Changing the Return Filter	9 - 5
Changing the Plexus Filter	9 - 5
Changing the Air Breather Element	9 - 6
Changing the Servo Oil Filter (Pilot)	9 - 7
Changing the Breaker In-line Filter	9 - 7
Changing the Drain Line Filter	9 - 8
Air Bleeding from Hydraulic Pump	
Air Bleeding from Rams	9 - 9
Air Bleeding from Slew Motor	9 - 9

Contents	Page No.
Battery	
* Checking Electrolyte	10 - 1
Battery Disconnection/Relplacement	10 - 2
Terminal Cleaning	10 - 2
Warning Symbols	10 - 3
Slew Unit	
Checking the Slew Gearbox Oil Level	11 - 1
Changing the Slew Gearbox Oil	11 - 1
Travel Gear Box	
Checking the Track Gearbox Oil Level	12 - 1
Changing the Track Gearbox Oil	12 - 1
Tracks and Running Gear	
Checking/Adjusting the Track Tension	13 - 1
Checking Rollers and Idler Wheels for Oil Leaks	13 - 2
Cleaning the Tracks	13 - 3
Bucket	
Checking/Adjusting for Side Play	14 - 1
Safety Related Components	
Periodic Replacement	15 - 1
Trouble Shooting	16 - 1

Identification of Machine Components

- | | |
|------------------------|------------------------------|
| 1 Bucket | 21 Upper Roller |
| 2 Bucket Link | 22 Recoil Spring |
| 3 Dipper Link | 23 Idler Wheel |
| 4 Bucket Ram | 24 Front Attachment Pin |
| 5 Dipper | 25 Engine Oil Pan |
| 6 Dipper Ram | 26 Servo (Pilot Line) Filter |
| 7 Boom | 27 Fuel Filter |
| 8 Boom Ram | 28 Engine Oil Filter |
| 9 Operator's Cab | 29 Return Filter |
| 10 Slew Gearbox | 30 Suction Strainer |
| 11 Fuel Tank | 31 Drain Line Filter |
| 12 Hydraulic Oil Tank | 32 Air Filter |
| 13 Battery | 33 Air Breather |
| 14 Air Cleaner | 34 Plexus Filter |
| 15 Engine and Radiator | 35 Breaker Filter |
| 16 Counterweight | 36 Hydraulic Pump |
| 17 Slew Ring | 37 Main Valve block |
| 18 Track Plate | |
| 19 Track Gearbox | |
| 20 Lower Roller | |



401910

It is most important that you read and understand this information and the publications referred to. Make sure all your colleagues who are concerned with lubricants read it too.

Hygiene

JCB lubricants are not a health risk when used properly for their intended purposes.

However, excessive or prolonged skin contact can remove the natural fats from your skin, causing dryness and irritation.

Low viscosity oils are more likely to do this, so take special care when handling used oils, which might be diluted with fuel contamination.

Whenever you are handling oil products you should maintain good standards of care and personal and plant hygiene. For details of these precautions we advise you to read the relevant publications issued by your local health authority, plus the following.

Storage

Always keep lubricants out of the reach of children.

Never store lubricants in open or unlabelled containers.

Waste Disposal

All waste products should be disposed of in accordance with all the relevant regulations.

The collection and disposal of used oil should be in accordance with any local regulations. Never pour used engine oil into sewers, drains or on the ground.

Handling

New Oil

There are no special precautions needed for the handling or use of new oil, beside the normal care and hygiene practices.

Used Oil

Used engine crankcase lubricants contain harmful contaminants.

Here are precautions to protect your health when handling used engine oil:

- 1 Avoid prolonged, excessive or repeated skin contact with used oil.

- 2 Apply a barrier cream to the skin before handling used oil.
- 3 Note the following when removing engine oil from skin:
 - a Wash your skin thoroughly with soap and water.
 - b Using a nail brush will help.
 - c Use special hand cleansers to help clean dirty hands.
 - d Never use petrol, diesel fuel, or paraffin for washing.
- 4 Avoid skin contact with oil soaked clothing.
- 5 Don't keep oily rags in pockets.
- 6 Wash dirty clothing before re-use.
- 7 Throwaway oil-soaked shoes.

First Aid - Oil

Eyes.

In the case of eye contact, flush with water for 15 minutes. If irritation persists, get medical attention.

Swallowing.

If oil is swallowed do not induce vomiting. Get medical advice.

Skin.

In the case of excessive skin contact, wash with soap and water.

Spillage

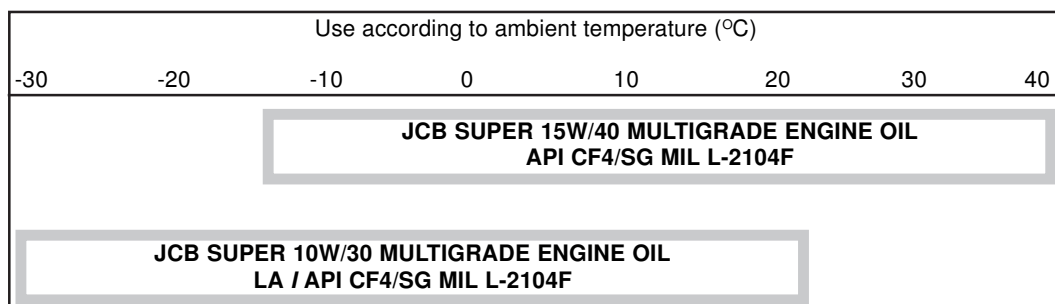
Absorb on sand or a locally approved brand of absorbent granules. Scrape up and remove to a chemical disposal area.

Fires

Extinguish with carbon dioxide, dry chemical or foam. Fire-fighters should use self-contained breathing apparatus.

JS200/JS210/JS220/JS240/JS260 and Variants

Item	Lubricant	International Specification	JS200-JS220 Capacity	JS240/260 Capacity
ENGINE	(see separate chart)		21.5 litres (4.7 UK gal) (5.64 US gal)	21.5 litres (4.7 UK gal) (5.64 US gal)
TRACK GEARBOX	JCB HD90 Gear Oil	API-GL-5, MIL-L-21 05	2 x 4.7 litres (2 x 1 UK gal) (2 x 1.2 US gal)	2 x 4.7litres (2 x 1 UK gal) (2 x 1 .2 US gal)
SLEW GEARBOX	JCB HD90 Gear Oil	API-GL-5, MIL-L-21 05	5 litres (1.09 UK gal) (1.31 US gal)	6 litres (1.3 UK gal) (1.56 US gal)
TRACK ROLLERS AND IDLER WHEEL	JCB HD90 Gear Oil	API-GL-5, MIL-L-21 05		
RECOIL SPRING CYLINDER	JCB Special HP Grease	Lithium complex (NLGI) inc. extreme pressure additives		
HYDRAULIC SYSTEM	JCB Hydraulic Fluid 46	ISO VG46	200 litres (44 UK gal) (52.8 US gal)	241 lit res (53 UK gal) (63.6 US gal)
SLEW RING - BEARING	JCB Special HP Grease	Lithium complex (NLGI) inc. extreme pressure additives	--	
- GEAR TEETH	JCB Special HP Grease	Lithium complex (NLGI) inc. extreme pressure additives	17 kg (37.48 lb)	17 kg (37.48 lb)
ALL OTHER GREASE POINTS	JCB Special HP Grease	Uthium complex (NLGI) inc. extreme pressure additives	--	
COOLING SYSTEM	see Coolant Mixtures		25.5 litres (5.6 UK gal) (6.7 US gal)	26.8 litres (5.9 UK gal) (7.1 US gal)
FUEL TANK	see Type of Fuel		343 litres (75.5 UK gal) (90.6 US gal)	343 litres (75.5 UK gal) (90.6 US gal)

ENGINE LUBRICATION CHART

Regular Maintenance and Lubrication Schedules

A poorly maintained machine is a hazard. Doing the regular maintenance and lubrication jobs listed in these schedules will help keep the machine in safe running order.

Apart from the daily jobs, the schedules are based on machine running hours. Keep a regular check on the hour meter reading. Do not use a machine which is due for a regular service. Rectify any defects found during regular maintenance before clearing the machine for use.

WARNING

Maintenance must be done only by suitably qualified and competent persons.

Before doing any maintenance make sure the machine is safe, it should be correctly parked on level ground.

To prevent anyone starting the engine, remove the starter key. Disconnect the battery when you are not using electrical power. If you do not take these precautions you could be killed or injured.

8-3-1-1

Initial Precautions for New Machine Usage :-

CAUTION

If the machine is operated at full load before its initial run-in procedure is complete it may cause scuffing and seizing which can adversely effect the life of the machine.

8-3-1-5

A new machine is only dispatched when all inspection procedures are complete, but operating it under severe conditions from new will affect its performance and shorten its service life.

- 1 Carry out the daily inspection procedure.
- 2 Always warm up the machine (see **Warming-up** under **Using Your Machine**).
- 3 Check to see if the machine is running normally.
- 4 Avoid running or slewing the machine rapidly. '-
- 5 Avoid sudden shocks e.g. suddenly stopping the boom when lowering.
- 6 Where applicable, grease the front pins daily.

Every 10 Operating Hours or Daily**Whichever occurs first**

- 1 Clean**
 - a Machine generally.
- 2 Grease**
(If operating in very wet or severe conditions)
 - a Boom/bucket/dipper pivot points. (except boom base and boom/dipper pivot - bushes)
- 3 Check (Engine Stopped)**
 - a Generally for damage.
 - b For oil and coolant leakage.
 - c Security of bolts and nuts †.
 - d For disconnected or shorted wiring, loose terminals.
 - e Hydraulic fluid level.
 - f Engine oil level.
 - g Track tension.
 - h Windscreen washer fluid level.
 - j Fuel system for leaks.
 - k Fuel level.
 - l The auxiliary circuit hydraulic oil filter visual indicator (if using a rockbreaker)

†Tapping with a hammer will identify any loose nuts and bolts which should then be tightened to the specified torque.

- 4 Check (Engine Running)**
 - a Operation of warning lights and audible alarm.
 - b Operation of other electrical equipment.
 - c Exhaust for excessive smoke.
 - d Excavator operation.
 - e Transmission operation.
 - f Operation of track and slew brakes.
 - g Operation of hour meter.

Every 50 Operating Hours or Weekly**Whichever occurs first**

- 1 Do the daily jobs plus:**
- 2 Clean**
 - a Drain water and sediment from fuel tank.
 - b Drain fuel water separator.
- 3 Grease**
 - a All pivot pins. (except boom base and boom/dipper pivot-bushes)

Every 250 Operating Hours or Monthly**Whichever occurs first**

- 1 Do a 50 hour service plus:**
- 2 Clean**
 - a Drain water and deposits from hydraulic oil tank.
 - b Air cleaner dust valve.
 - c Pre-cleaner
 - a Battery terminals.
- 3 Grease**
 - a Door and canopy hinges.
 - b Slew ring bearing.
- 4 Check (Engine Stopped)**
 - a Battery electrolyte level.
 - b Security of major unit mounting bolts and nuts. If loose, tighten to specified torque.
 - c Track and slew gearbox oil level.
 - d Fan belt adjustment.
 - e Air inlet system security
 - f Hoses and pipework for chafing or damage.
 - g Condition of ram piston.
 - h Bucket pivot pin grease seals.
 - j Track plate condition and bolt torque.
 - k Track and running gear.
 - l Top and bottom track rollers for oil leaks .
 - m Track idler wheels for oil leaks.
 - n Wiring for chafing.
 - o Radiator for damage.
 - p Oil cooler for damage.
- 5 Check (Engine Running)**
 - a Operation of throttle system.
 - b Operation of overload warning.
 - c Operation of stop control.



Download the full PDF manual instantly.

Our customer service e-mail:

aservicemanualpdf@yahoo.com