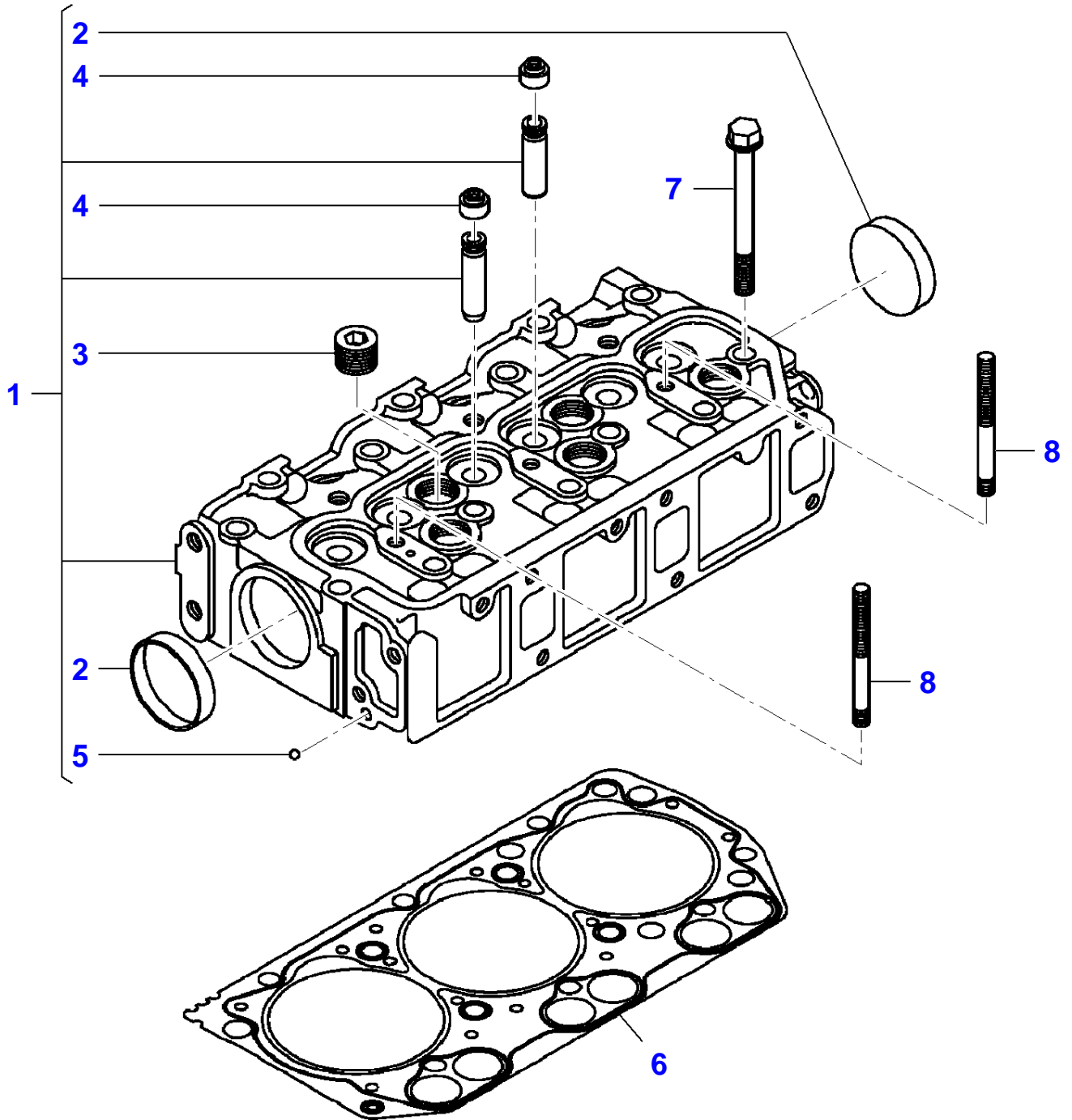


<b>Page Number</b>	<b>Page Title</b>	<b>Page Reference</b>
01-000-TOC	ENGINE, FUEL AND EXHAUST SYSTEM	01-000-TOC
02-000-TOC	FRAME AND SUSPENSION	02-000-TOC
03-000-TOC	DRIVE TRAIN SYSTEM	03-000-TOC
04-000-TOC	HYDRAULIC SYSTEM	04-000-TOC
05-000-TOC	ELECTRICAL SYSTEM	05-000-TOC
06-000-TOC	CAB	06-000-TOC
07-000-TOC	PLATFORM	07-000-TOC
08-000-TOC	CHASSIS	08-000-TOC
09-000-TOC	WHEELS	09-000-TOC
10-000-TOC	CUTTING TOOLS	10-000-TOC
11-000-TOC	ACCESSORIES	11-000-TOC
12-000-TOC	GENERAL INFORMATION	12-000-TOC

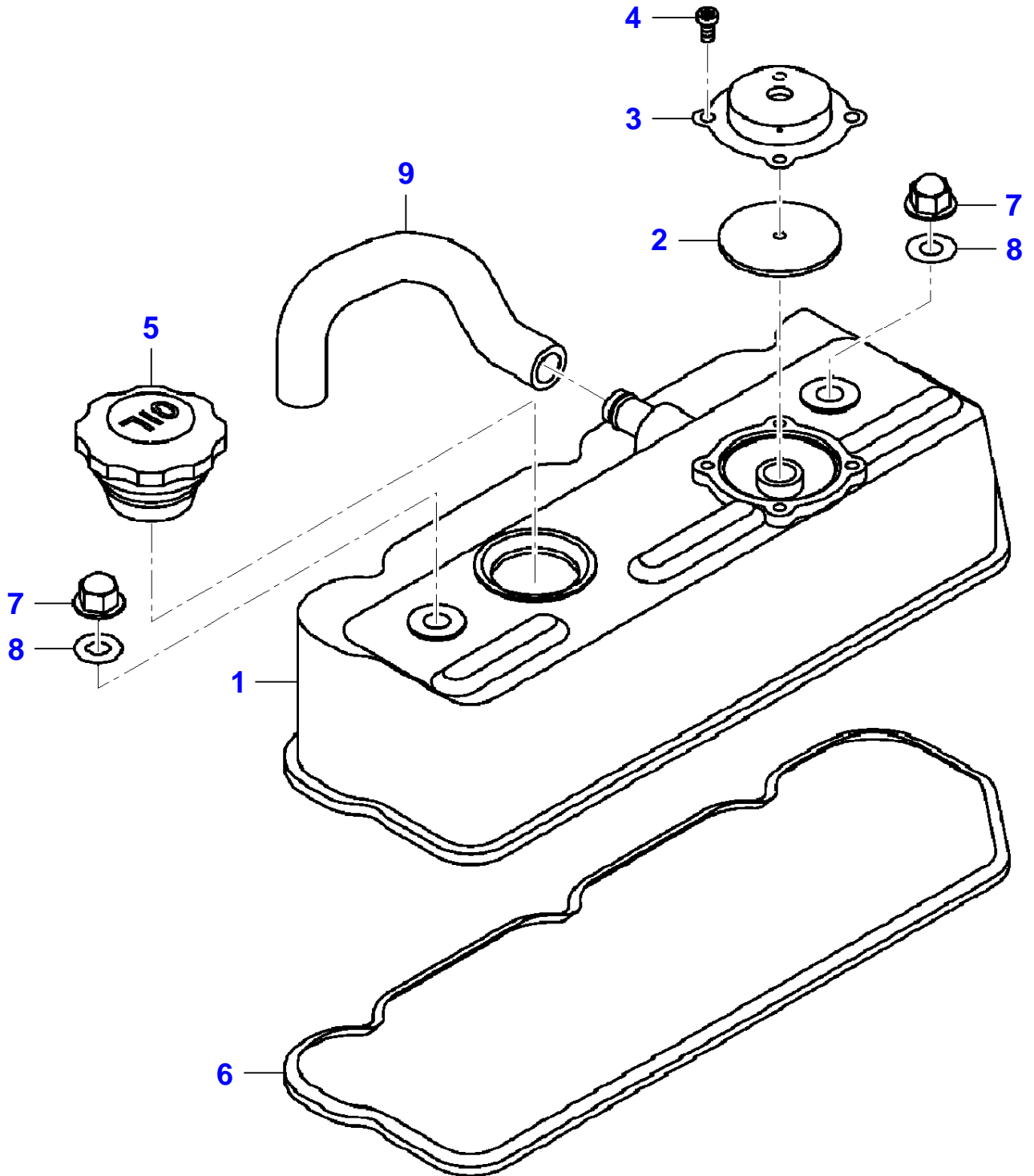
Page Number	Page Title	Page Reference
01-0001	ENGINE - CYLINDER HEAD	IS011002-1
01-0002	ENGINE - CYLINDER HEAD COVER	IS021002-1
01-0003	ENGINE - INTAKE MANIFOLD	IS031002-1
01-0004	ENGINE - EXHAUST MANIFOLD	IS041002-1
01-0005	ENGINE - CYLINDER-BLOCK	IS051002-1
01-0006	ENGINE - CONNECTING ROD BEARINGS - REPAIR KIT	IS061002-1
01-0007	ENGINE - OIL SUMP	IS071002-1
01-0008	ENGINE - REAR PLATE	IK791002-1
01-0009	ENGINE - TIMING GEAR HOUSING - TYPE ENGINE : E3CDVB39	IS091002-1
01-0010	ENGINE - TIMING GEAR HOUSING - TYPE E3CDVB41	IS091008-1
01-0011	ENGINE - HANGER	IS101002-1
01-0012	ENGINE - ROCKER ARM	IS111002-1
01-0013	ENGINE - CAMSHAFT	IS121002-1
01-0014	ENGINE - PISTON	IS131002-1
01-0015	ENGINE - CRANKSHAFT	IS151002-1
01-0016	ENGINE - OIL PUMP	IS161002-1
01-0017	ENGINE - WATER PUMP - UP TO 139037 - TYPE ENG. E3CDVB39	IS171002-1
01-0018	ENGINE - WATER PUMP - TYPE E3CDVB41 - TYPE E3CDVB39 FROM 139038	IS171003-1
01-0019	ENGINE - FAN	IS191002-1
01-0020	ENGINE - INJECTION SYSTEM	IS201003-1
01-0021	ENGINE - INJECTION SYSTEM - INJECTION NOZZLE	IS201002-1
01-0022	ENGINE - INJECTION PUMP	IS211003-1
01-0023	ENGINE - INJECTION PUMP	IS211004-1
01-0024	ENGINE - FUEL PIPE	IS221002-1
01-0025	ENGINE - REPAIR KIT	IK031003-1
01-0026	ALTERNATOR & STARTER	IS231002-1
01-0027	ALTERNATOR	IS291001-1
01-0028	STARTER	IS301002-1
01-0029	ENGINE ELECTRICS	IS241002-1
01-0030	BATTERY	IS751002-1
01-0031	COOLING SYSTEM	IS331003-1
01-0032	COOLING SYSTEM	IS331004-1
01-0033	FUEL SYSTEM - FUEL TANK & ATTACHMENTS	IS351002-1
01-0034	FUEL SYSTEM - FUEL FILTER & PIPES	IS311002-1
01-0035	AIR FILTER	IS321002-1
01-0036	EXHAUST	IS341002-1
01-0037	THROTTLE CONTROL	IS371001-1

I-IS01-002-B



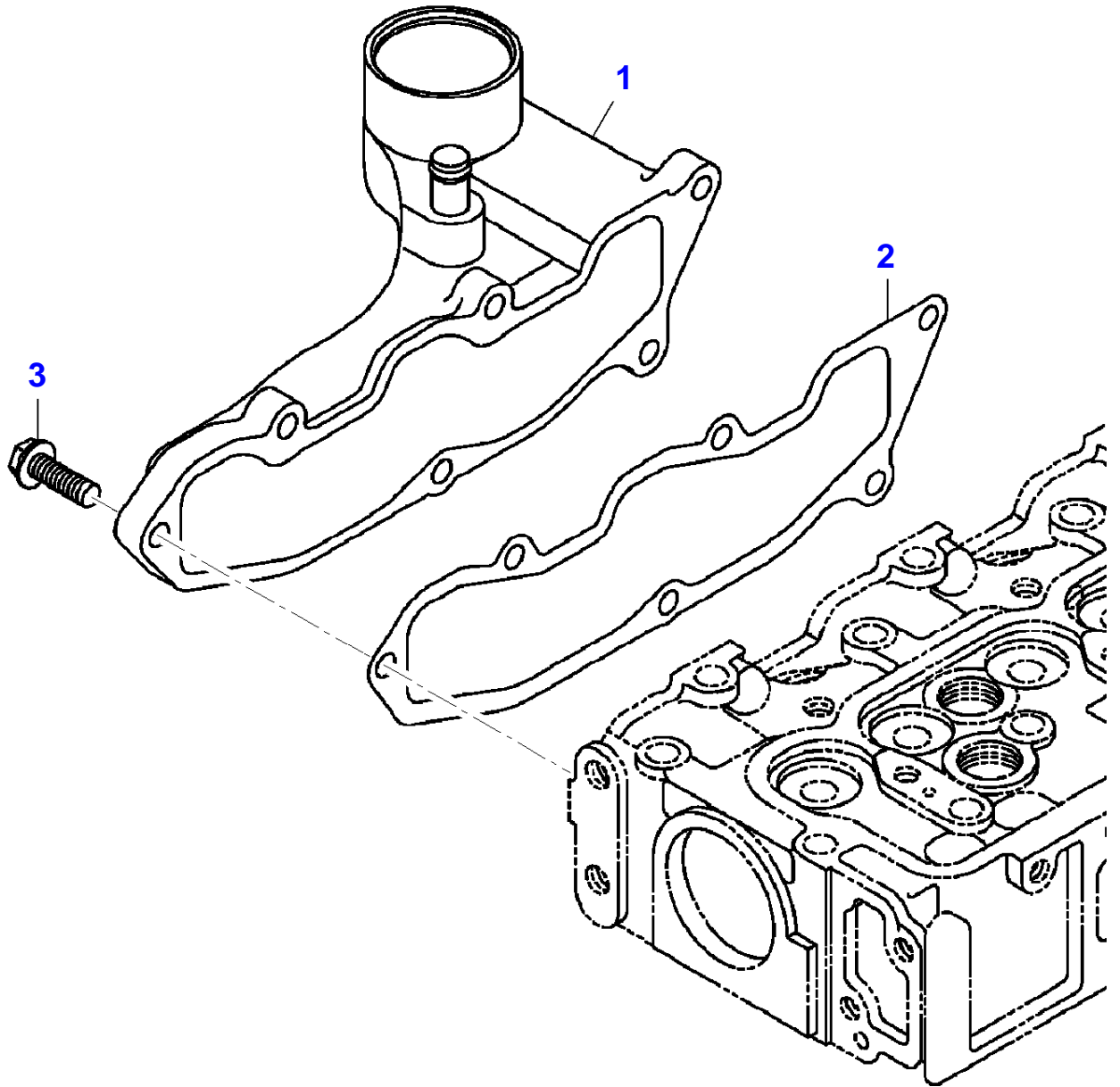
Item	Part Number	Qty	Description Comments	Technical Specification
1	6242054M92	1	CYLINDER HEAD	
2	3710542M1	2	SEALING CUP (1) 50 mm	?50 MM
3	3707877M2	5	PIPE PLUG (1)	1/2"
4	3710256M1	6	VALVE OIL SEAL (1)	
5	3711713M1	1	BALL (1)	
6	6242056M2	1	CYLINDER HEAD GASKET	
7	3710536M1	14	HEXAGONAL HEAD BOLT	M10 X 92 (1.25)
8	3607420M1	2	STUD BOLT	M8 X 71 (1.25)

I-IS02-002-B



Item	Part Number	Qty	Description Comments	Technical Specification
1	3608540M92	1	CYLINDER HEAD COVER	
2	3710554M1	1	RUBBER FLANGE	
3	3710561M1	1	BLOW BY COVER	
4	3710529M1	4	HEXAGONAL HEAD BOLT	4 X 8"
5	3710188M1	1	OIL FILLER CAP	
6	3710553M1	1	CYLINDER HEAD COVER SEAL	
7	3710127M2	2	CAP NUT	M8
8	4267629M1	2	SEAL	
9	6242049M2	1	RUBBER HOSE	

I-IS03-002-B



---

Massey Ferguson

MF 1533 COMPACT TRACTOR

3906056

ENGINE - INTAKE MANIFOLD

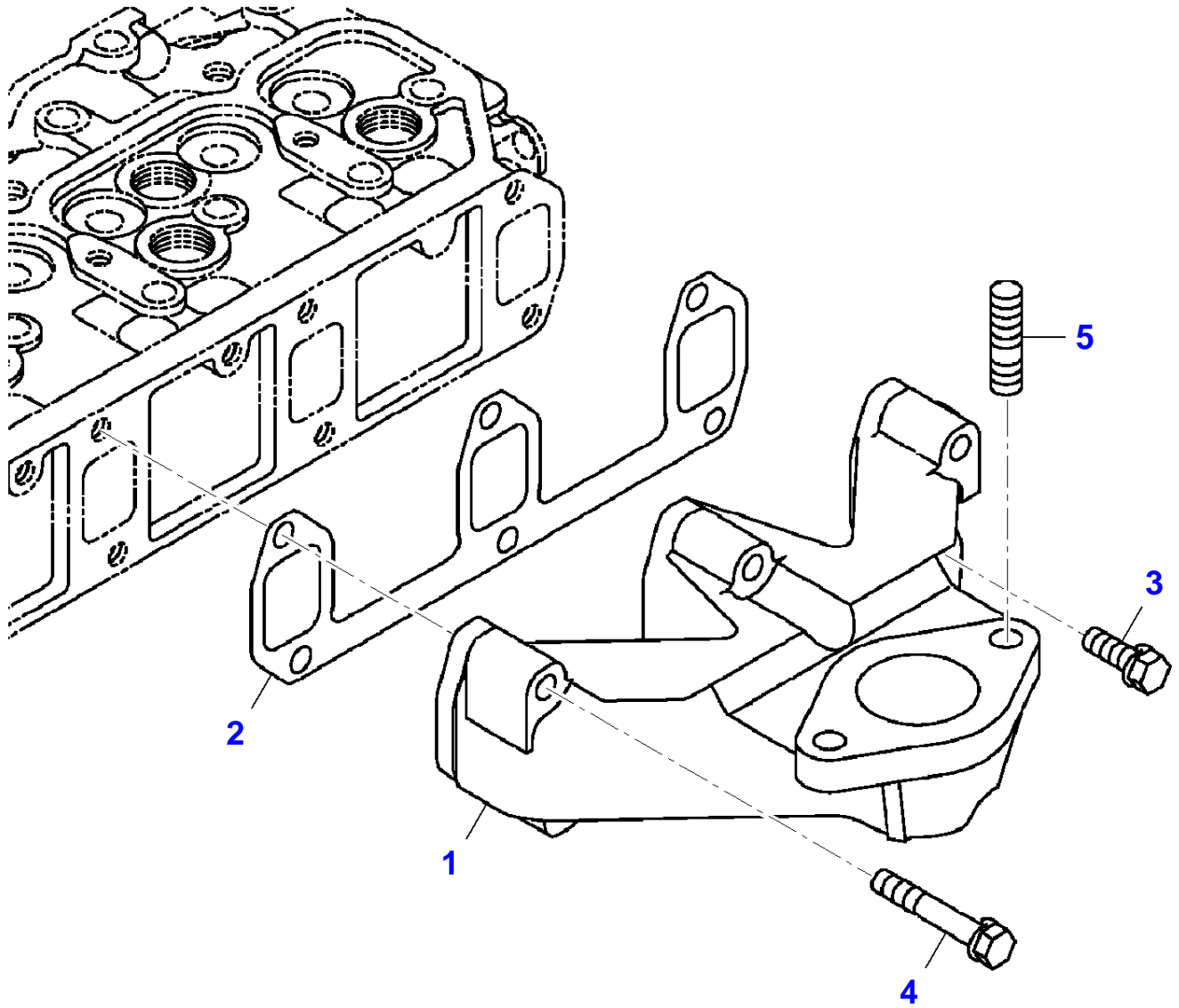
Page01-0003

---

Item	Part Number	Qty	Description Comments
1	3710647M91	1	INLET MANIFOLD
2	3710649M1	1	INLET MANIFOLD GASKET
3	4267568M1	6	HEXAGON FLANGE BOLT



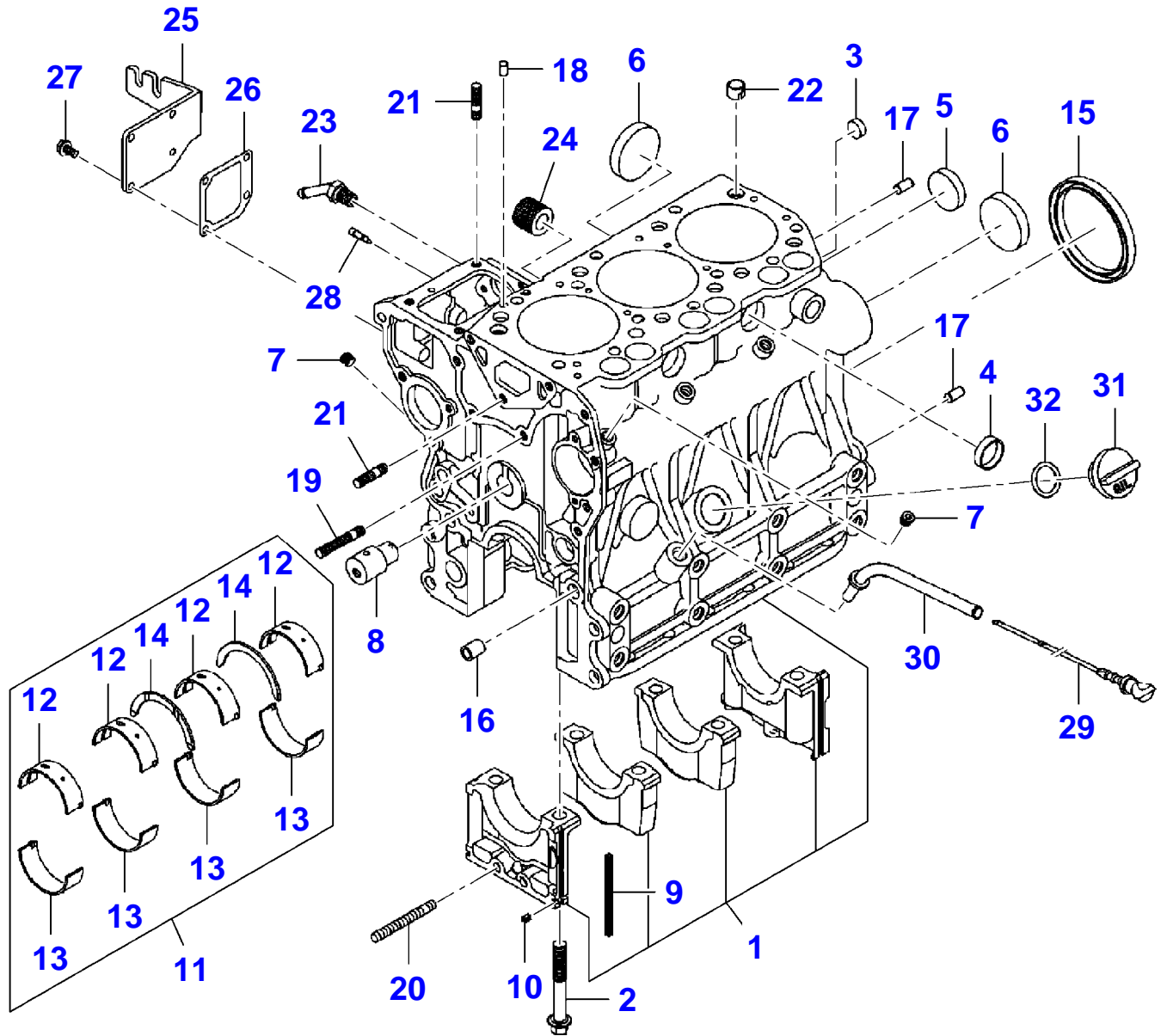
I-IS04-002-B



<b>Item</b>	<b>Part Number</b>	<b>Qty</b>	<b>Description Comments</b>
1	6242075M1	1	EXHAUST MANIFOLD
2	3710652M1	1	EXHAUST MANIFOLD GASKET
3	3702273M1	1	HEXAGONAL HEAD BOLT
4	3704253M1	5	BOLT
5	3704355M1	2	STUD BOLT

MF 1533 COMPACT TRACTOR  
I-IS05-002-B

I-IS05-002-B



Item	Part Number	Qty	Description Comments	Technical Specification
1	6242058M92		KIT,CYL.BLOCK	
2	3710537M1	8	HEXAGONAL HEAD BOLT (1)	
3	4265578M1	2	SEALING CUP (1) 16 mm	?16 MM
4	3710130M2	2	SEALING CAP (1) 28 mm	?28 MM
5	4265580M1	1	SEALING CUP (1) 36 mm	?36 MM
6	3710542M1	3	SEALING CUP (1) 50 mm	?50 MM
7	3704257M1	8	PLUG (1) [B][C][G][H]	
8	3711695M3	1	PIN (1)	
9	3710160M1	4	BEARING CAP SEAL	
10	3710161M1	2	BEARING CAP SEAL 7 mm	?7 MM
11	3710571M91	1	CRANKSHAFT BEARING SET	
12	3710572M1	4	CRANKSHAFT BEARING (11)	
13	3710573M1	4	CRANKSHAFT BEARING (11)	
14	3710580M1	2	THRUST BEARING (11)	
15	3710544M2	1	OIL SEAL	
16	3710137M2	2	DOWEL PIN	
17	4266242M1	2	STRAIGHT PIN	?8 X 16 MM
18	3757960M1	2	PIN	?6 X 12 MM
19	3706536M1	1	STUD BOLT M8 X 40	M8 X 40
20	3754115M1	1	BOLT	M8 X 60
21	3704353M1	3	STUD BOLT	M8 X 22
22	3758287M1	2	DOWEL PIN	
23	3754123M1	1	WATER DRAIN PIPE	
24	3710284M1	1	CONNECTORS	
25	3756975M3	1	INJECTION PUMP COVER	
26	3710163M1	1	COVER SEAL	
27	4267405M1	4	HEXAGON FLANGE BOLT	
28	3710411M1	1	SPRING PIN	
29	6242407M2	1	OIL DIPSTICK	
30	6242061M91	1	GUIDE	
31	3756982M1	1	OIL FILTER CAP	
32	3756940M1	1	O-RING	

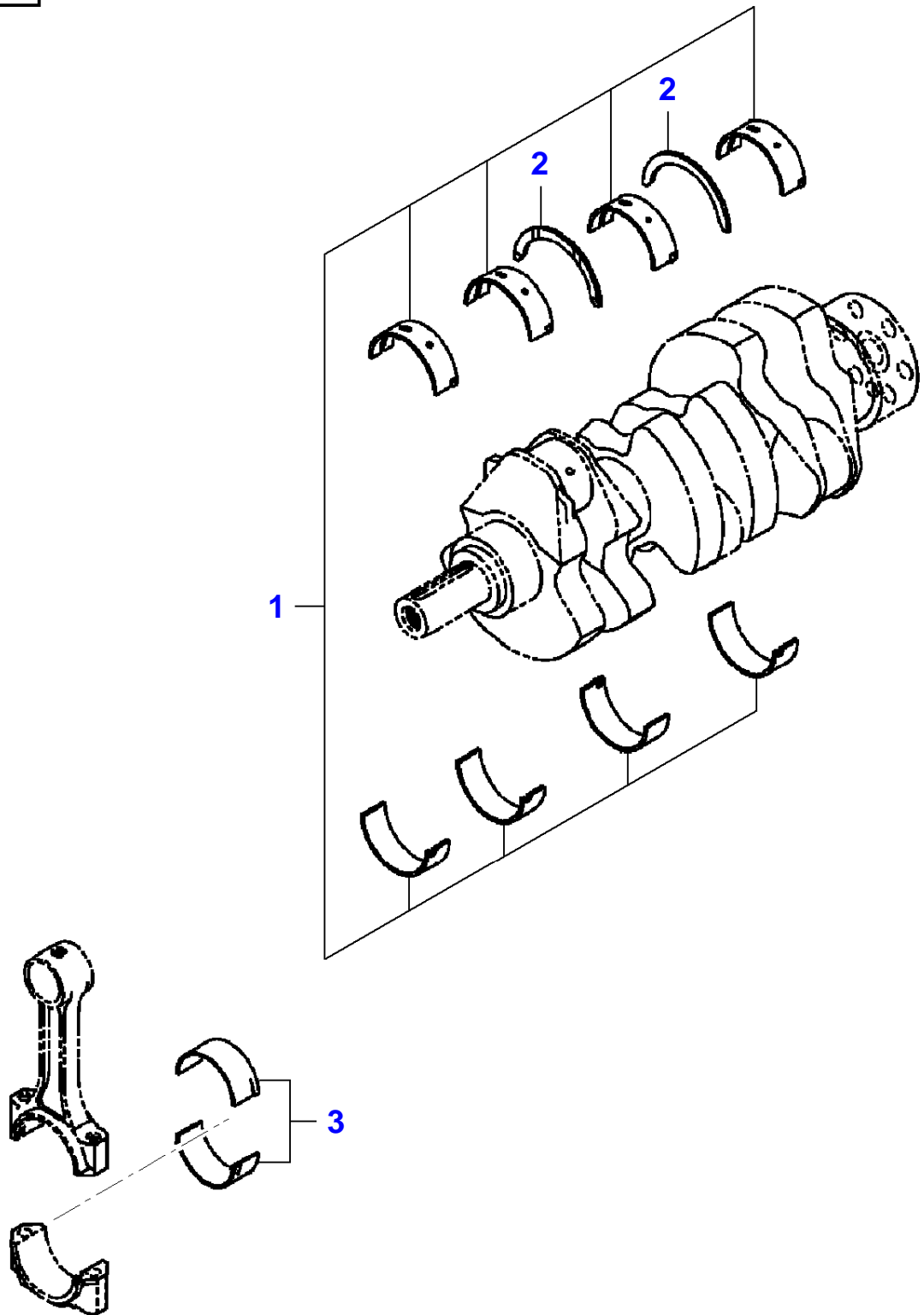
[B] MF 1532 - FOR TYPE ENGINE : E3CDWB

[C] MF 1529 - FOR TYPE ENGINE : E3CDWB01

[G] MF 1532 - FOR TYPE ENGINE : E3CDWB02

[H] MF 1529 - FOR TYPE ENGINE : E3CDWB03

I-IS06-002-B

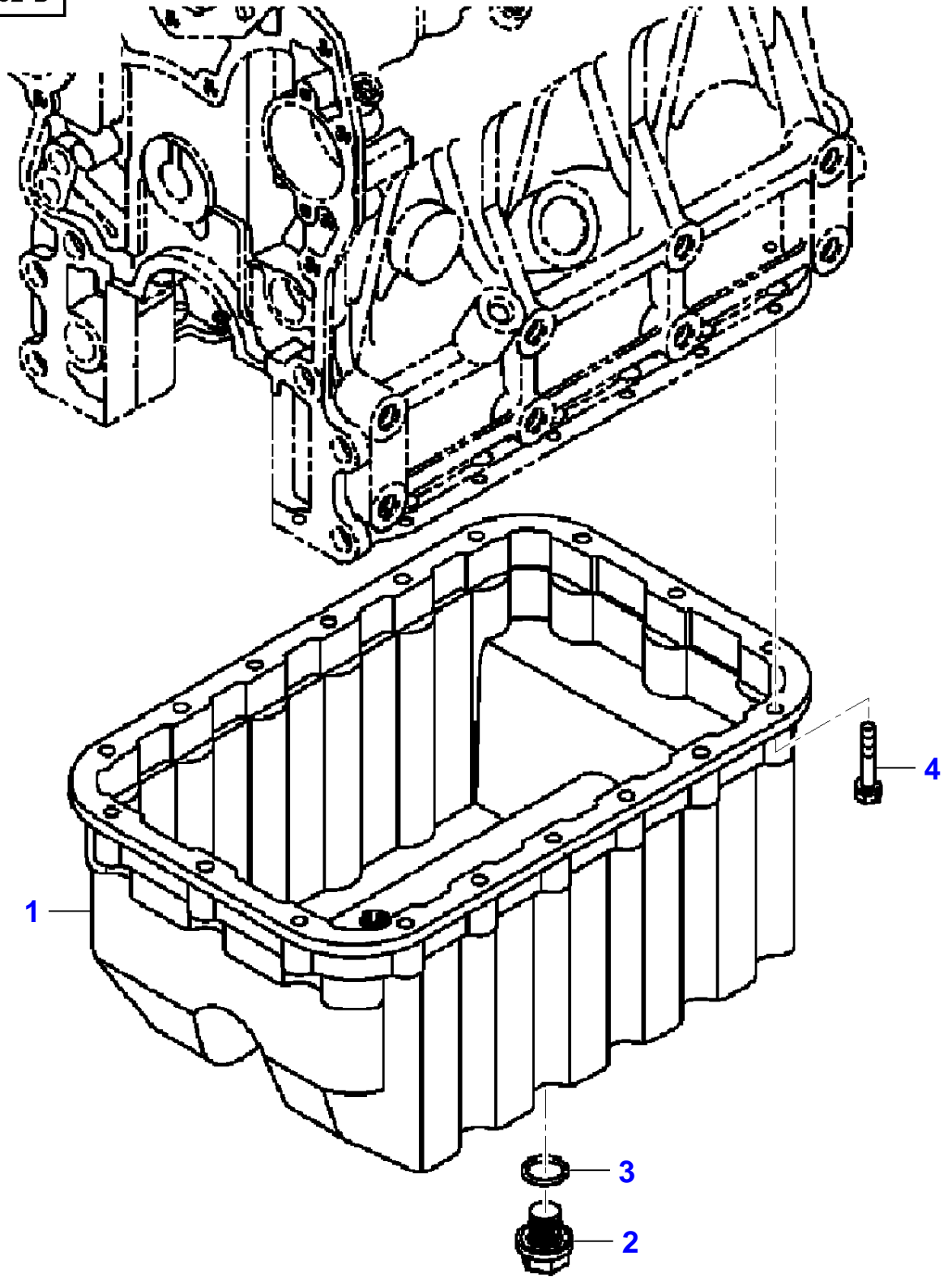


**REPAIR KIT**

---

<b>Item</b>	<b>Part Number</b>	<b>Qty</b>	<b>Description</b> <b>Comments</b>	<b>Technical Specification</b>
1	3710574M91	1	CRANKSHAFT BEARING SET	.25MM
	3710577M91	1	CRANKSHAFT BEARING SET	.50MM
2	3710580M1	2	THRUST BEARING (1)	
3	4266964M1	3	BEARING	+0,25 MM
	4266969M1	3	BEARING	+0,50 MM
	6252649M1	3	BEARING	

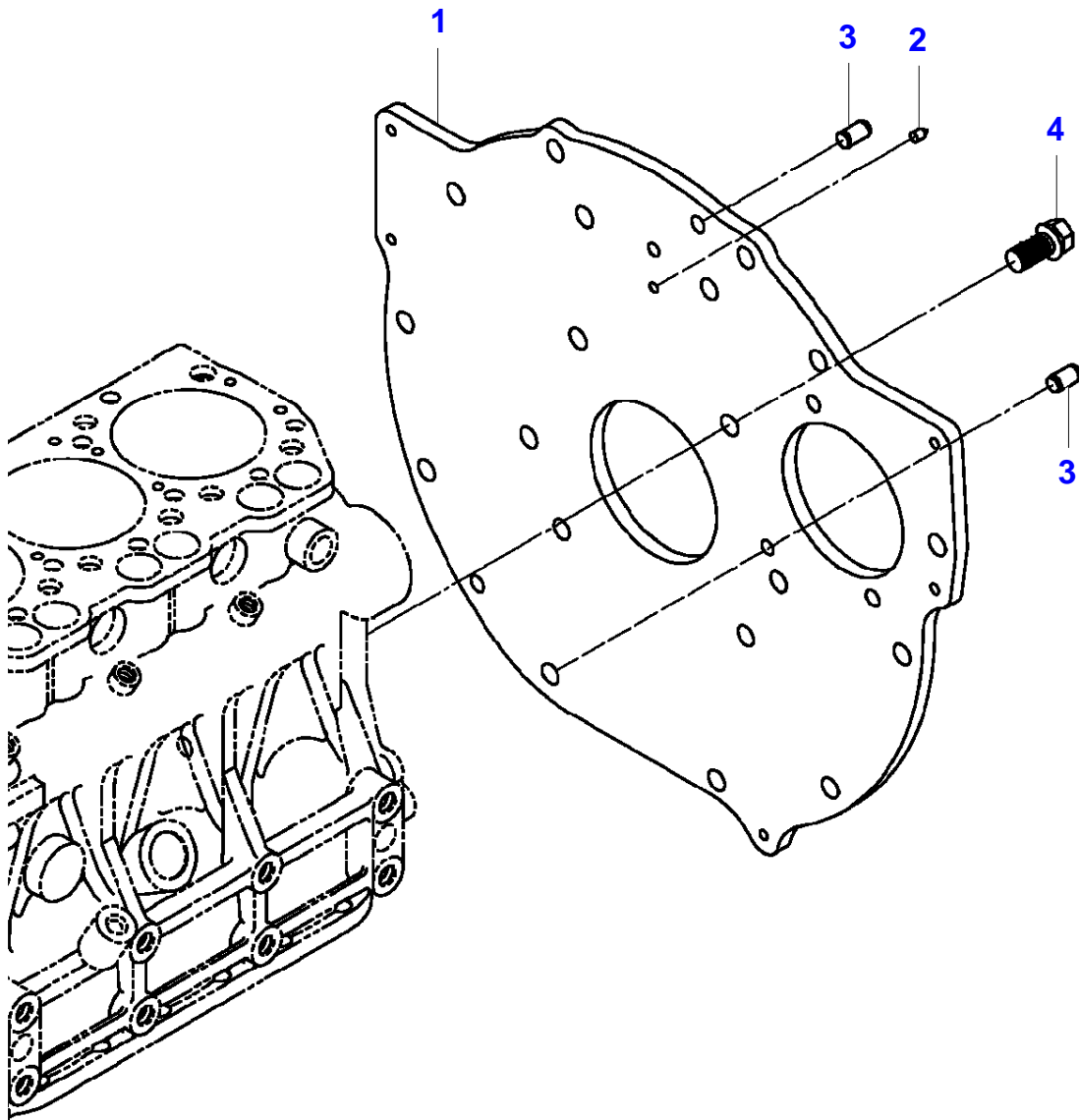
I-IS07-002-B



<b>Item</b>	<b>Part Number</b>	<b>Qty</b>	<b>Description Comments</b>	<b>Technical Specification</b>
1	3756979M1	1	OIL SUMP	
2	3607358M2	2	PLUG M14	M14 (1.5)
3	3708620M1	2	O-RING	
4	3704335M1	18	HEX CAP SCREW M6X35	



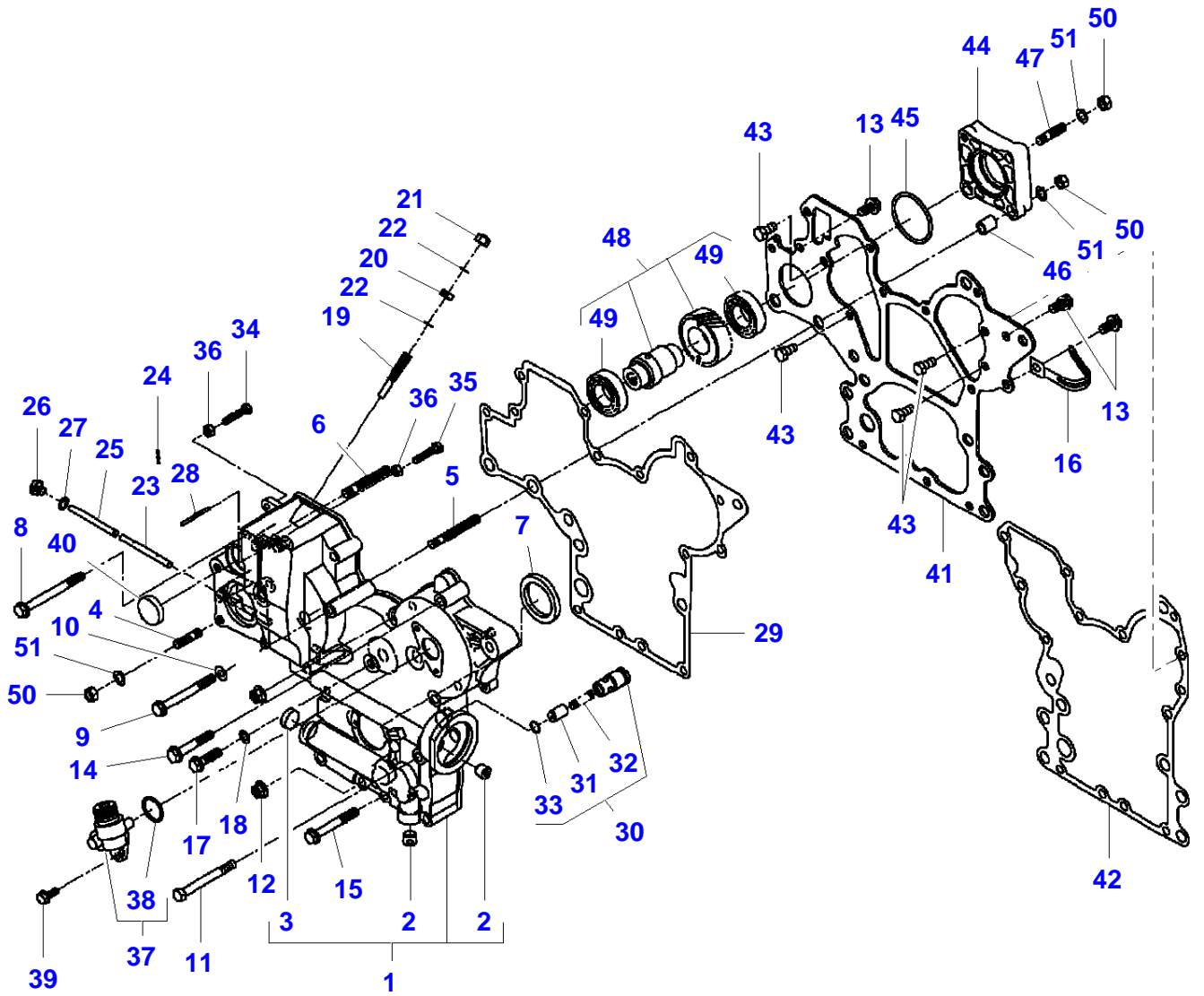
I-IK79-002-A



<b>Item</b>	<b>Part Number</b>	<b>Qty</b>	<b>Description Comments</b>	<b>Technical Specification</b>
1	6242103M1	1	PLATE	
2	3756977M1	1	GUIDE POINTER	
3	3757959M1	2	PIN	?10 X 18 MM
4	3710768M1	8	HEXAGONAL HEAD BOLT	M12 X 1.5 X 30

MF 1533 COMPACT TRACTOR  
I-IS09-002-A

I-IS09-002-A

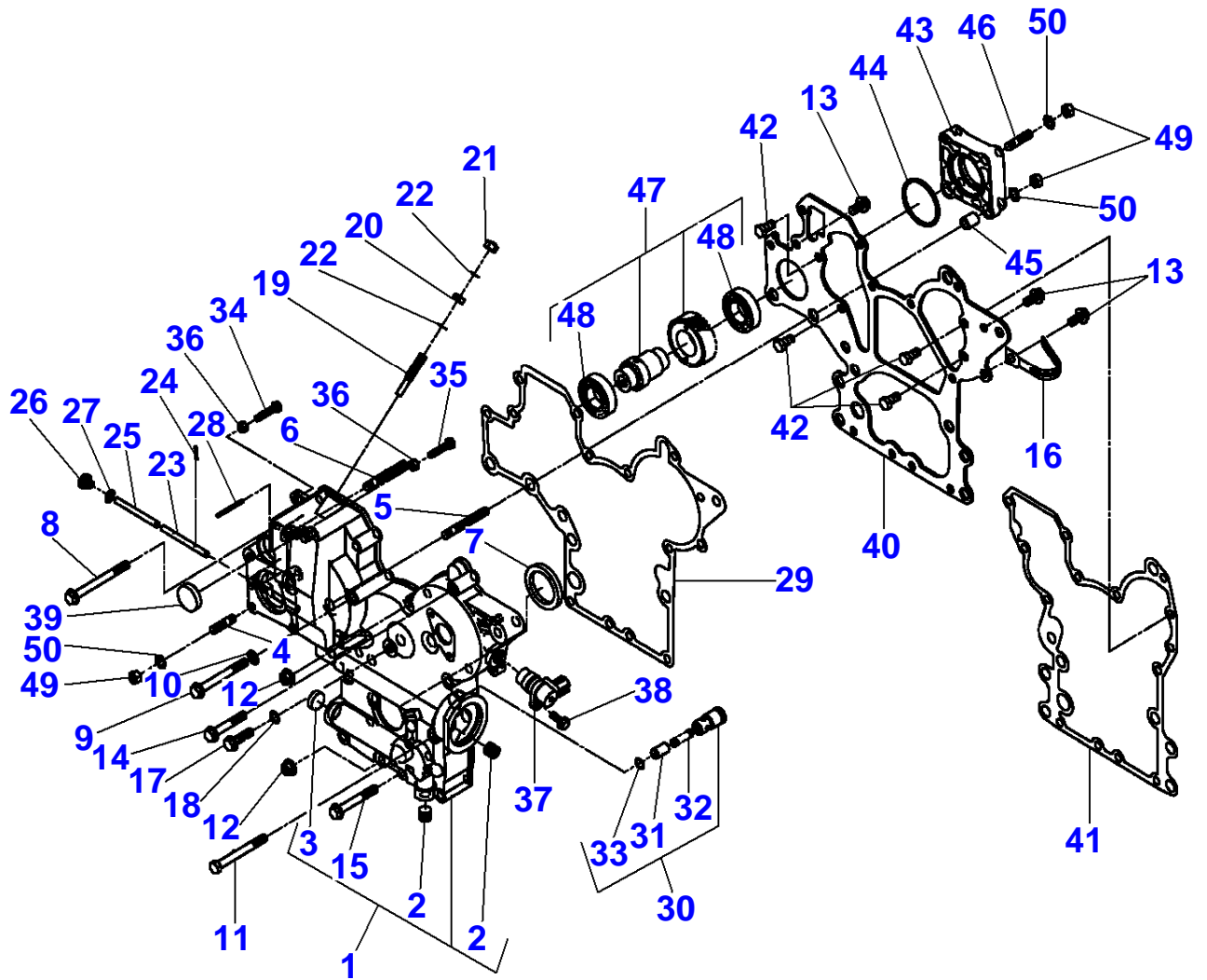


Item	Part Number	Qty	Description Comments	Technical Specification
1	4266009M91	1	TIMING GEAR CASE	
2	3710541M2	2	PIPE PLUG (1) 1/4	0.25 NPT
3	3710543M1	1	SEALING CUP (1) 20 mm	?20 MM
4	3704353M1	4	STUD BOLT	M8 X 22
5	3704354M1	2	STUD BOLT	
6	3710484M1	1	STUD BOLT	M8 X 50
7	3710133M1	1	OIL SEAL	
8	4267576M1	1	HEXAGON FLANGE BOLT	
9	4267575M1	1	HEXAGON FLANGE BOLT	
10	4265990M1	1	WASHER 8-16 X 1,2	
11	3606214M1	1	BOLT UP TO SERIAL OR ENGINE NUMBER 181192	
	6240915M1	1	HEXAGON FLANGE BOLT FROM SERIAL OR ENGINE NUMBER 181193	
12	4260467M1	2	HEX NUT M8	M8
13	4267566M1	3	HEXAGON FLANGE BOLT	
14	4267572M1	3	HEXAGON FLANGE BOLT	
15	4267574M1	4	HEXAGON FLANGE BOLT	
16	3756922M1	1	CLAMP	
17	4267569M1	1	HEXAGON FLANGE BOLT	
18	3756923M1	1	FLAT WASHER 8-14 X 1	?8-14 X 1 MM
19	3710404M2	1	STOP	
20	3710125M1	1	NUT	
21	3708581M1	1	CAP NUT	M8
22	3758721M1	2	SEAL	
23	3710400M1	1	ARM PIN	
24	3754238M1	2	PIN	
25	3710401M2	1	PIN	
26	4266261M1	1	SCREW PLUG	M8 (1.25)
27	3756923M1	1	FLAT WASHER 8-14 X 1	?8-14 X 1 MM
28	3710135M1	1	GROOVE PIN UP TO SERIAL OR ENGINE NUMBER 181192	3 X 40
	3607092M1	1	GROOVE PIN FROM SERIAL OR ENGINE NUMBER 181193	?3 X 32 MM
29	3710565M2	1	GEAR CASE GASKET	
30	3605696M92	1	PRESSURE VALVE UP TO SERIAL OR ENGINE NUMBER 181192	
	3607433M91	1	RELIEF VALVE FROM SERIAL OR ENGINE NUMBER 181193	
31	3605697M2	1	RELIEF VALVE PISTON (30)	
32	3710279M1	1	RELIEF SPRING (30)	
33	3711702M1	1	SNAP RING (30)	
34	3710119M1	1	HEX CAP SCREW	
35	3710120M1	1	HEXAGONAL HEAD BOLT	M6
36	3710489M1	2	NUT UP TO SERIAL OR ENGINE NUMBER 178577	
	339030X1	2	HEX NUT FROM SERIAL OR ENGINE NUMBER 178578	M6 (1.0) ISO 8 ZN
37	3606142M92	1	TACHOMETER DRIVE	
38	3708632M1	1	O-RING	
39	4267406M1	2	HEXAGON FLANGE BOLT	

Item	Part Number	Qty	Description Comments	Technical Specification
40	3710083M1	1	BLANK CAP 30 mm	30
41	3710564M3	1	PLATE	
42	3710566M2	1	PLATE GASKET	
43	3710482M1	4	HEXAGONAL BOLT	M8 X 16
44	3710169M1	1	SPACER	
45	3708634M1	1	O-RING	
46	3710137M2	2	DOWEL PIN	
47	3704353M1	1	STUD BOLT	M8 X 22
48	6242115M91	1	SHAFT	
49	6242095M1	2	BEARING (48)	
50	3704361M1	8	NUT UP TO SERIAL OR ENGINE NUMBER 178577	
50	1440203X1	8	HEX NUT FROM SERIAL OR ENGINE NUMBER 178578	M8
51	353446X1	8	LOCK WASHER 5/16"	5/16"

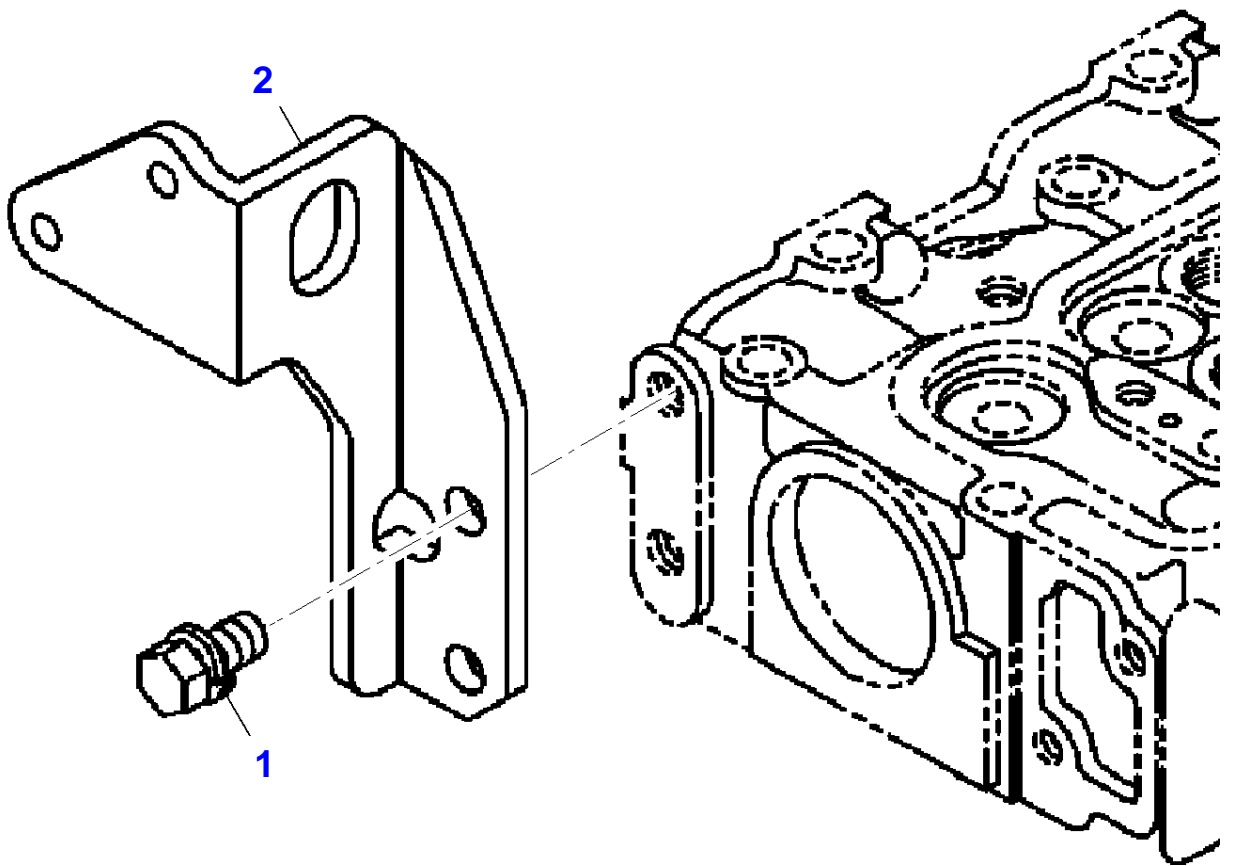
MF 1533 COMPACT TRACTOR  
I-IS09-008-A

I-IS09-008-A



Item	Part Number	Qty	Description Comments	Technical Specification
1	6252792M91	1	GEAR CASE ASSY.	
2	3710541M2	2	PIPE PLUG (1)	0.25 NPT
3	3710543M1	1	SEALING CUP (1) 20 mm	?20 MM
4	3704353M1	4	STUD BOLT	M8 X 22
5	3704354M1	2	STUD BOLT	
6	3710484M1	1	STUD BOLT	M8 X 50
7	3710133M1	1	OIL SEAL	
8	4267576M1	1	HEXAGON FLANGE BOLT	
9	4267575M1	1	HEXAGON FLANGE BOLT	
10	4265990M1	1	WASHER 8-16 X 1,2	
11	3606214M1	1	BOLT	
12	4260467M1	2	HEX NUT M8	M8
13	4267566M1	3	HEXAGON FLANGE BOLT	
14	4267572M1	3	HEXAGON FLANGE BOLT	
15	4267574M1	4	HEXAGON FLANGE BOLT (1)	
16	3756922M1	1	CLAMP	
17	4267569M1	1	HEXAGON FLANGE BOLT	
18	3756923M1	1	FLAT WASHER 8-14 X 1	?8-14 X 1 MM
19	3710404M2	1	STOP	
20	3710125M1	1	NUT	
21	3708581M1	1	CAP NUT	M8
22	3758721M1	2	SEAL	
23	3710400M1	1	ARM PIN	
24	3754238M1	2	PIN	
25	3710401M2	1	PIN	
26	4266261M1	1	SCREW PLUG	M8 (1.25)
27	3756923M1	1	FLAT WASHER 8-14 X 1	?8-14 X 1 MM
28	3710135M1	1	GROOVE PIN	3 X 40
29	3710565M2	1	GEAR CASE GASKET	
30	3605696M92	1	PRESSURE VALVE	
31	3605697M2	1	RELIEF VALVE PISTON (30)	
32	3710279M1	1	RELIEF SPRING (30)	
33	3711702M1	1	SNAP RING (30)	
34	3710119M1	1	HEX CAP SCREW	
35	3710120M1	1	HEXAGONAL HEAD BOLT	M6
36	3710489M1	2	NUT	
37	6250284M91	1	SENSOR	
38	4267406M1	1	HEXAGON FLANGE BOLT	
39	3710083M1	1	BLANK CAP 30MM	30
40	3710564M3	1	PLATE	
41	3710566M2	1	PLATE GASKET	
42	3710482M1	4	HEXAGONAL BOLT	M8 X 16
43	3710169M1	1	SPACER	
44	3708634M1	1	O-RING	
45	3710137M2	2	DOWEL PIN	
46	3704353M1	1	STUD BOLT	M8 X 22
47	6242115M91	1	SHAFT	
48	6242095M1	2	BEARING (47)	
49	3704361M1	8	NUT	
50	353446X1	8	LOCK WASHER	5/16"

I-IS10-002-B







**Download the full PDF manual instantly.**

**Our customer service e-mail:**

**[aservicemanualpdf@yahoo.com](mailto:aservicemanualpdf@yahoo.com)**